

News from The Kennel Club

Your monthly guide to what The Kennel Club is doing for you and your dogs straight from The Kennel Club Press Office...

In this issue...

KC Strategy	7
Events	9
Field Trials	18
Seminar diaries	20
KC file for January	27
For the Members	29
KCAI	29
Kennel Names	31
Fees	33

‘Play Your Part’ report launches in Westminster

The Kennel Club launches ‘Play Your Part’ report in Westminster in face of welfare crisis. The report recommends collaborative measures across all aspects of brachycephalic dog breeding and ownership.

A new report by The Kennel Club was launched on 27 November in the House of Commons, following a successful launch in the Scottish Parliament in October. The Kennel Club will be urging collaboration between all stakeholders on the issues
Continued on page 2



Giles Watling MP
supporting the event



January Kennel Gazette

The January issue of the Kennel Gazette features a personality profile on Stuart McCabe-Bell, as he completes his first year on The Kennel Club Board, Surrey Dog Training Society hosted The Kennel Club's 48th Working Trials Championships last October and Len Newman, Tracking Dog Stake judge and Stan Ford, Patrol Dog Stake judge

Continued on page 3

News from The Kennel Club

[MORE NEWS>>](#)

'Play Your Part' report launches in Westminster

Continued from page 1

facing flat-faced, or brachycephalic, dogs such as French Bulldogs, Pugs and Bulldogs.

The report, 'Play Your Part: Breeding, Buying and Bringing up Brachycephalic Dogs Better', highlights the welfare crisis faced by some of these dogs due to their huge increase in popularity, and details the collaborative measures that need to be taken by the puppy buying public, breeders, vets, Government and The Kennel Club to protect and improve the health of current and future generations.

Brachycephalic breeds – often referred to as flat-faced dogs due to their short skull length – have increased in popularity substantially over the last two decades, resulting in irresponsible and high-volume commercial breeding and importing from abroad with no regard for health or welfare.

Whilst demand has now started to level off and is starting to decline, this has compounded a number of health challenges, spanning issues with breathing, skin and eyes, and created one of the most pressing welfare issues for dogs in the UK.

Some of the most popular brachycephalic breeds – French Bulldogs, Bulldogs and Pugs – now account for one in five dogs in the UK, and The Kennel Club report recommends collaborative action focussing on:

- Health screening, including increasing uptake of the only tool to analyse and improve Brachycephalic Obstructive Airway Syndrome, the University of Cambridge/Kennel Club Respiratory Function Grading scheme;
- Education and behaviour change of breeders, puppy buyers and dog owners, and the role of online

marketplaces which advertise pets;

- Introducing mandatory contracts for breeders and overhauls to Codes of Practices on caring for dogs.

The Kennel Club hopes the report and event in Westminster will galvanise all those involved in breeding, selling, registering, owning and caring for dogs to 'play their part' and work together to improve the health and welfare of the current huge population of these dogs, and future generations. All the asks are non-breed-specific so that in the future, new breeds and types of 'fashionable' dog will also be better safeguarded.

Bill Lambert, spokesperson for The Kennel Club, commented:

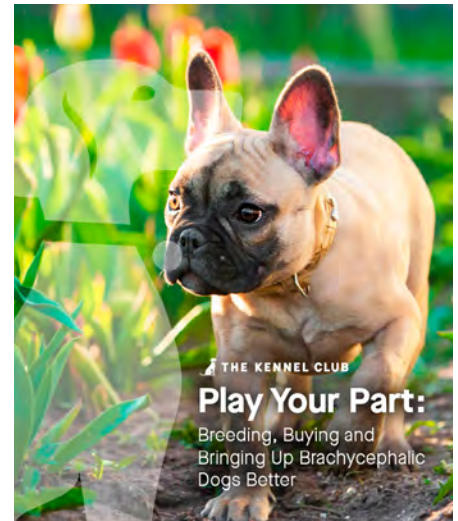
"This report shows that we all have a part to play in improving the health of these popular pets"

"There will always be a demand for brachycephalic type dogs – they are much loved pets by millions in the UK – but it is imperative that we work together to improve how they are bred and bought, and how they are cared for throughout their lives. Crucially, we urge breeders

to have their dogs assessed via The Kennel Club/University of Cambridge Respiratory Function Grading scheme and the veterinary community to support the scheme, so we have the infrastructure for more wide-scale health testing.

"The recommendations outlined in this report, which is very much focussed on collaborative action, aim to improve the welfare of those dogs already owned by many and those yet to be bred. As well as making this a priority ourselves, we are calling on the Government, breeders, dog owners, vets, rehoming centres, insurance companies and online sellers, to play a part, and to help us in our mission to ensure dogs are bred and owned responsibly, and live healthy, happy lives."

Giles Watling, Conservative MP for Clacton, who sponsored the 'Play Your



Part' event in Parliament to discuss the report and recommendations, added: "This report shows that we all have a part to play in improving the health of these popular pets. Clearly the issues are not straightforward and I hope that collaborative action will continue and evolve, to protect and improve dog health."

As part of its commitment to encouraging responsible dog breeding and ownership, The Kennel Club, alongside the University of Cambridge, developed the Respiratory Function Grading (RFG) scheme in 2019 which assesses Bulldogs, French Bulldogs and Pugs for BOAS. Whilst continuing to fund research into brachycephalic dog health, it has also licensed its RFG scheme to collect international data on BOAS and improve health globally. In 2016, The Kennel Club instigated the Brachycephalic Working Group, which is made up of vets, BOAS academics and researchers, welfare organisations and breed clubs and aims to research, understand and take evidence-based action to reduce and ultimately eliminate the health problems that these breeds can face, and to educate uninformed puppy buyers and breeders who place looks over health.

The report, and more information about what The Kennel Club is doing to improve brachycephalic health, is available at thekennelclub.org.uk/playyourpart

News from The Kennel Club

[MORE NEWS>>](#)

January Kennel Gazette

Continued from page 1

report on the event despite the torrential weather conditions and Bill Moores, Chairman of the editorial panel, reviews the past 12 months and looks forward to the year ahead.

It is the last chance to see The Kennel Club's 150 years exhibition as it closes on 19 January 2024. To book please email artgallery@thekennelclub.org.uk or call 020 7518 1064. More information on The Kennel Club's history and 150-year anniversary, including a video about the organisation and its impact, from its beginnings to today, and plans for the future, is available at thekennelclub.org.uk/150years

In health matters, Gay Robertson discusses the record-breaking health webinar presented by Professor Paul Freeman MA VetMB CertSAO DipECVN

MRCVS, Principal Clinical Neurologist at the Queen's Veterinary School Hospital, University of Cambridge, on intervertebral disc disease and that it is not just a 'Dachshund thing'.

We look back on some of the highlights

from 2023 including Frank Borg, Chairman of the Maltese National Canine Federation, who presented Tony Allcock OBE, Chairman of The Kennel Club, with

Nominations for the 2024 International Canine Health Awards close on 31 January

a traditional silver Maltese boat to commemorate The Kennel Club's 150th anniversary, a young guest who was born on 5 April 2023, 150 years and one day after his ancestor, Mr Sewallis

Evelyn Shirley, MP, founded

The Kennel Club makes a visit to The Kennel Club, Beagle Welfare receive a special award in recognition for all their hard work and dedication that goes into rehoming Beagles - they celebrate their 45th anniversary this

year, and we congratulate North West Toy & Utility Society who held a successful inaugural open show.

The Kennel Club Art Gallery team announce the exhibitions coming up in 2024, a reminder that nominations for the 2024 International Canine Health Awards, run by The Kennel Club Charitable Trust, close on 31 January, and The Kennel Club's public affairs team provides an update on the latest political campaigns.

Our breed of the month is the supreme scenting machine, the Pointer. We look back at the origins of this stylish gundog that was in demand by the gentry of the 18th and 19th centuries. We invite members of the field trial community to comment on the breed's extraordinary prowess in field trials demonstrating a breed fit for its original function. We present a selection of Pointer artefacts from The Kennel Club's vast art collection relating specifically to the Pointer, we



THE KENNEL CLUB

If you would like to receive a copy of the Kennel Gazette why not become a Kennel Club Affiliate? Along with all the great content included within the Gazette, being an Affiliate entitles you to 10 per cent off all Crufts and Discover Dogs tickets, 10 per cent off all Kennel Club merchandise and publications all year round and more.

For more information go to <https://www.thekennelclub.org.uk/shop/memberships/kennel-club-affiliates/>

look back at the success the breed has had at Crufts, discuss the current health situation of the breed and raise awareness of the work that Pointers In Need carry out to help Pointers find a home in the UK and around the world, including a heartfelt story about Scruffy, who was rescued from Lebanon. Two Pointer owners share other activities they do with their dogs that yet again demonstrates how active and fit they like to be and eight judges choose their three favourite Pointers that they have judged in the show ring and field in the Judges' Choice.



Subscribe to the Kennel Gazette from £25 a year

To find out more about becoming an affiliate member or to purchase, visit:
thekennelclub.org.uk/shop/memberships/kennel-club-affiliates/

News from The Kennel Club

[MORE NEWS>>](#)

UK's former favourite breed falls in favour

The Wire Fox Terrier, one of Britain's most historic breeds, looks set to enter The Kennel Club's list of dog breeds 'At Watch' for the first time in their history.

Annual puppy numbers from the dog registration body shows a significant fall so far in 2023 for the breed, with just 281 Wire Fox Terrier puppies born – a 21 per cent decrease in popularity compared with the same period in 2022, where there had been 359 puppies recorded in the first three quarters of the year. The breed has already declined by nearly 30 per cent in the last five years, and an overwhelming 94 per cent drop since the breed's peak in 1947 when over 8,000 puppies were born.

The small and distinctive wiry-coated breed was historically a Royal Family favourite during the Edwardian era, with King Edward VII and Queen Victoria both reported to have owned one, and later was favoured by Agatha Christie. The breed is perhaps best known as Snowy,

the canine sidekick in The Adventures of Tintin comics, which were first published in 1929. At this time, the friendly and fearless terrier was the most popular dog in the UK, a trend which continued throughout the 1920s and into the 1930s.

A century on, however, the outlook of this once beloved British breed has changed and it is likely to enter The Kennel Club's 'At Watch' list, which monitors breeds with between 300-450 puppy births a year.

Those with less than 300 puppy registrations annually are recorded on the organisation's Vulnerable Native Breed list – devised to highlight those British and Irish native breeds which could be at risk of disappearing from our streets and parks.

With 34 vulnerable native breeds recorded as of 2022, and a further eight classed as 'At Watch', there are currently more endangered dog breeds than ever before. This is the first time in its history that the Wire Fox Terrier could be added to this list.

Despite the falling numbers, the breed has been one of the most successful at Crufts, having won Best in Show on three occasions – in 1962, 1975 and 1978 – and being in the running to take the title a further 12 times, including as recently as Crufts 2023. However, these crowning moments on the world's most famous dog stage have not translated into ownership boosts outside of the event.

Bill Lambert, spokesperson for The Kennel Club, said: "The Wire Fox Terrier

was the nation's favourite breed a century ago, and it remained popular for decades, so it is very concerning to see such low numbers for a friendly and lively dog that was once beloved by royalty and families alike, and there is a real danger that we could lose them forever.

"...it is very concerning to see such low numbers for a friendly and lively dog that was once beloved by royalty and families alike"

"There were just 27 vulnerable dog breeds a decade ago. There are now another eight breeds either vulnerable or at risk, with the Wire Fox Terrier sadly looking likely to join this growing list. We have such a rich diversity of

breeds, so we urge the British public to find out more about the lesser-known breeds, especially those who are at risk of disappearing.

"Crufts, taking place in March, will have a dedicated Discover Dogs zone, and we really want to encourage potential puppy owners to come along and not only discover more about over 200 breeds, including those that are vulnerable, but also talk to experts to find out if they are right for them."

More information and tickets for Crufts are available on the Crufts website: [Crufts.org.uk](https://www.crufts.org.uk). Tickets are free for under 8s, and advance tickets start at £14 for children (aged 9-15) and concessions, and £21 for adults. Please note that tickets are only available through Crufts' official ticketing partner, The Ticket Factory (fees apply).

More information about vulnerable breeds and The Kennel Club's campaign to save them can be found at thekennelclub.org.uk/vulnerablebreeds



Wire Fox Terrier

© Diane Pearce / The Kennel Club

News from The Kennel Club

[MORE NEWS>>](#)

German Longhaired Pointer wins The Kennel Club's 2023 HPR Championship

Wamlanghaar Point Blanc of Caldera, an eight-year-old German Longhaired Pointer from Winkleigh, Devon has won The Kennel Club's Hunt, Point and Retrieve (HPR) Championship.

Sponsored by Skinner's Field & Trial Pet Foods and Sporting Saint Gundog Equipment Suppliers, the event was held on 17 - 18 November 2023 at The Kennel Club's Emblehope Estate in Northumberland.

Wamlanghaar Point Blanc of Caldera, known at home as Cracker and owned and handled by Steve Kimberley, was awarded first place at the competition which saw 27 talented working gundogs from HPR breeds tested on their natural working ability. The judges were Mark Firmin and Theo Gould.

Steve said: "I am absolutely delighted to win the HPR Championship with Cracker. I was extremely proud of his performance over the two days of the Championship."

Kennel Club Gundog Events Manager Kate Broers said: "The Championship was a great success, and it was wonderful to hold the first gundog championship at the spectacular Emblehope and Burngrange Estate, which was the ideal setting for the dogs and handlers to demonstrate their hunting skills. The plentiful game available really tested the dogs and each one was given the opportunity to show itself to its best. We would like to thank all who were involved in the planning, preparation and running of the event. To hold the event on such an outstanding HPR ground is a real privilege, and The Kennel Club are extremely grateful to Head Keeper Raymond Holt for hosting the Championship this year. The ground and game were extremely well prepared and the gun team ensured a successful and enjoyable two days.

"Huge congratulations to all the dogs and handlers in the awards"

"Thanks must also go to the judges Mark and Theo for their time and expertise when judging the dogs. They analysed the performance of dogs and handlers with great skill and attention to detail across the two days. Thank you to them for their hard work in separating these talented dogs.

"Finally, we would also like to extend our heartfelt gratitude to our sponsors, Skinner's Field & Trial, and Sporting Saint Gundog Equipment Suppliers. Skinner's give an awful lot to the world of working dogs and their representatives are passionate about providing the best nutrition for our gundog needs. Sporting Saint are one of the UK's leading suppliers of gundog training equipment and both sponsors are greatly appreciated, and we would not be able to run these events without their generous support.

"Huge congratulations to all the dogs and handlers in the awards and especially to the winners Steve and Cracker."



HPR Championship winners Steve Kimberley, Cracker and Head Keeper Raymond Holt

The results of the HPR Championship are as follows:

1st Wamlanghaar Point Blanc of Caldera, (GLP) Owned and handled by Mr Kimberley

2nd Warrendown Black Pearl at Ganninyem, (GSP) Owned by Mrs JC Gosling, handled by Mr R Major

4th (and Guns' Choice) FTCh Sutchest Braun Gino, (GSP) Owned and handled by Mr J Bird

Diploma of Merit Moorrunner Isla at Gilleyfield, (GWP) Owned and handled by Ms L Holmes

Diploma of Merit FTCh Quintana Cloud Berry, Owned by Mr & Mrs PM Nixon, handled by Mr P Nixon

For more information about working gundogs, please visit The Kennel Club website at thekennelclub.org.uk/fieldtrials

News from The Kennel Club

Creative competition opens for 'bright and bold' budding young artists

The Young Kennel Club (YKC) is inviting entries for its annual Artist of the Year competition and is encouraging all painters and photographers in the making to express their creativity and showcase their dog artistry skills.

Entries must feature a photo or painting of a dog and should fit the theme of 'Bright and Bold'.

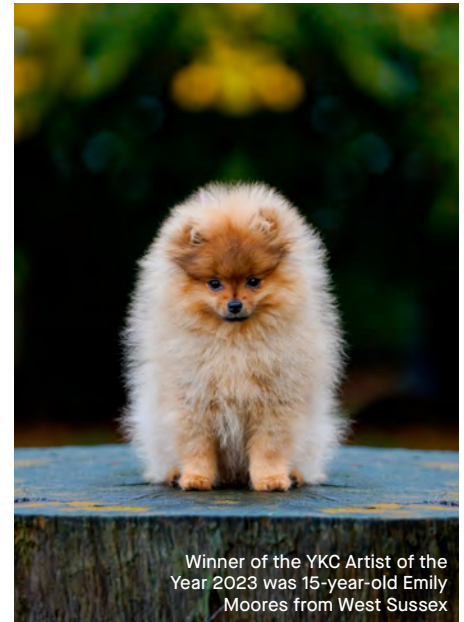
This year's judging panel will be looking for distinctive artwork that catches their attention, and demonstrates an effective use of bright colours, whilst also showcasing creativity. They will look at three key areas: impact of the photograph

or painting, creativity of the image and the composition.

The overall winner will receive £80, four tickets to Crufts 2024, 2nd place will receive £50 and four tickets to Crufts 2024, while 3rd place will receive £30 and four tickets to Crufts 2024.

YKC members have until Wednesday 31 January 2024 to submit their entries. The photographs should be portrait only, and no bigger than 10MB, in JPEG format and no smaller than 600x600 pixels.

Further information on the competition and how to enter can be found by visiting [thekennelclub.org.uk/ykcartistoftheyear](https://www.thekennelclub.org.uk/ykcartistoftheyear)



Winner of the YKC Artist of the Year 2023 was 15-year-old Emily Moores from West Sussex



Subscribe to the Kennel Gazette from £25 a year

- 12 issues of The Kennel Gazette
- 10% off selected Crufts and Discover Dogs tickets
- 10% off selected Kennel Club publications
- A copy of The Kennel Club Annual Report
- An affiliate loyalty card and pin badge

To find out more about becoming an affiliate member or to purchase, visit:
[thekennelclub.org.uk/shop/memberships/kennel-club-affiliates/](https://www.thekennelclub.org.uk/shop/memberships/kennel-club-affiliates/)

For the Members

Looking back at the progress made in 2023

As a busy, show-filled, 12 months draws to a close and before we enter a new phase of our transformation, there was a chance to reflect on what we have achieved through an enormous amount of work in 2023 via the Members' virtual meeting on November 30th.

Broadcasting live at 7pm from Clarges Street, the panel shared with more than 100 Members highlights from an eventful 2023, and looked ahead to the next 12 months. The panel for the evening was composed of The Kennel Club Chairman Tony Allcock, Vice-Chair Paul Eardley, our new Chief Financial Officer Jannine Edgar and Mark Bermingham, Strategy & Implementation Executive.

2023 was of course a landmark year for The Kennel Club, we celebrated our 150th birthday, culminating in the Buckingham Palace Garden Party, and were awarded the honour of a Royal prefix. This year we also focussed on a number of key areas to ensure our stability and success into the future.

Strengthening our financial position:

When we shared our audited accounts with members in May 2023 the picture wasn't a good one - it showed a situation where we realised a £1million loss in 2022. Throughout 2023 we have taken steps to improve this position, starting with the registrations price increase that Members voted in favour of at the AGM. We have taken forward plans to free up some of our office space in Clarges Street and are exploring our options for Emblehope. We renewed our important Agria partnership, and have created greater financial stability for Petlog. Crufts 2023 was a highlight too, not only in terms of the experience, press coverage and atmosphere but we also saw a better-than-forecast profitability.



2023 saw more events held at Clarges Street

Improving our CRM system: In order to get our customer service levels back up to the right level we identified the areas that were causing customers difficulty, in particular around litter and change of ownership applications, and took action. As a result, application times are back to 3-5 days, our telephone waiting times are under two minutes, and The Kennel Club and Petlog Trust Pilot ratings have moved to 4.5 out of 5 in the past 12 months.

Delivering better support and engagement with clubs, organisers and participants:

Safeguarding dog sports for the future is, of course, a big project and in 2023, we had been listening. We conducted a survey of 10,000 people who deliver, take part in – or who don't yet take part in – dog activities, to understand their experiences and motivations. This research will be fully shared in the coming months with members. We have also reduced the backlog on awards certificates, suspended benching requirements for two years, in order to help show organisers in testing financial times, and we introduced a red and yellow card system, to deal with undesirable behaviour at events or on social media – behaviour which will not help us retain or attract new people to our sport.

Improving our Members' experience:

Following the results of the member survey in 2022 we learnt that Members wanted an increased regional presence and better communication – and so we listened and responded. We have introduced a new monthly email, and a new Facebook page dedicated to members. We have been talking with Members and hearing their views face-to-face in our members' lounges, which started at Crufts and which we have since trialled at Championship shows across the country with the last event of the year held at LKA. In addition, we've had more events at Clarges Street itself - from the Chairman's Cocktail Party and past YKC/KCJO members lunch to the well-received breed lunches.

Making a positive difference for dogs and their owners:

Our 2023 highlights would not be complete without looking at our health work. We have developed a health test - the RFG or Respiratory Function Grading Scheme - that can assist all brachycephalic dogs – not just KC registered dogs. In total more than 3,000 dogs have used this test and we have helped another 23 vets to be trained and approved as assessors for the RFG Scheme. The Play Your

Continued >

For the Members

Looking back at the progress made in 2023 - continued



Part report was launched in September, urging collaboration on the issues facing flat-faced, or brachycephalic, dogs and we ran our Be Puppywise campaign, to demonstrate to the puppy buying public some of the pitfalls in the new online world of buying and selling puppies and to outline and demonstrate what good breeding should look like.

In 2023, we continued our vital education work with a new program of webinars that saw 10,000 viewers attend, and we also launched our new Kennel Club DNA Testing Services, which resulted in 2,000 dogs to be tested for a range of health conditions with the single, cost-effective mouth swab.

Looking ahead to 2024

The Members' virtual meeting concluded with a look ahead to the improvements we are planning for this year. We have prioritised initiatives that will help grow our revenue and that will support our grassroots community. Other areas of transformation, such as improving our Governance, and growing our dog training offer have not been forgotten and we will turn our attention to those once we have greater financial stability and have laid the necessary groundwork.

Evolving our registration model: This year we will continue to improve and evolve our registration model to provide a better service for our breeders and puppy buyers. In addition we also aim to improve the transparency around the health of the dogs registered to showcase the work of good breeders and help puppy buyers to feel confident in the quality of a KC registered dog.

We want to build on the best parts of the Assured Breeders Scheme, and to incorporate key components into our whole registration system. We are still defining this project and working out how best we balance the needs of the breeding and showing community, with the need for revenue growth and also with the external pressures and expectations around Health and Welfare that we face as The Kennel Club. Once we have a model defined, we will check and validate this with the breeding community and our customers. This will take time to get right, and we anticipate the work stretching beyond 2024. In the meantime, we are making a number of improvements this year to customer service and to our revenue, including to Find A Puppy, digital puppy packs and registration certificate digitalisation.

Strengthening our grassroots support:

We listened to our community in 2023 and they have asked us to find opportunities to reduce bureaucracy, simplify and clarify rules and regulations and develop ways to provide support alongside regulation so that we can protect the future of dog activities together. One of the first ways that we will do this is to introduce a Regional Support Network, this will mean changing some of our processes and how we work (and how we are organised) so that our staff can build greater knowledge, and closer working relationships, with defined areas of the country. We are also looking at how we can make it easier for local clubs and societies to work with the KC by simplifying the requirements to become a Kennel Club 'Club'.



Maximising our property assets: We will implement the agreed changes to Clarges Street, reconfiguring our offices to let out the 3rd and 4th floors and giving our Members a dedicated entrance. The refurbishment is planned to begin in the early part of 2024. We will also continue to explore our options around the Emblehope Estate.

Repositioning our brand: The Kennel Club is relatively well known across the UK, around two thirds of UK dog owners have heard of us. However a much smaller proportion are familiar with what we do (19%) and an even smaller proportion (12%) feel that the KC is an organisation that is 'for them'. Compounding this is the fact that we have 11 different 'Brands' under our overall umbrella for our various different products and services, meaning our impact and recognition is diluted. This year, we will streamline and simplify the brands that we have and also clearly define how we can make best use of the Royal prefix that we have been honoured with. We will make any changes carefully and through talking to the right people in our community. We will also very clearly link any changes to delivery of new products and services. We don't just want to tell the world we are changing, we want to show the world at the same time.

2024 is set to be another busy, exciting and challenging year at The Kennel Club. We have clear plans in place for what we will deliver over the course of the year and expect to see improvements for Members, for our breeders and for participants in canine activities as well as improvements to our financial stability. Here's to our 151st year!

Events



Important message regarding awards gained at all licensed events

We would like to apologise that due to the operational issues currently being experienced by The Kennel Club, competitors at forthcoming licensed events will experience a delay on the issue of awards by our office. However, we would like to remind competitors that it is permitted to enter events where eligibility is dependent upon awards and/or titles which are pending confirmation, e.g. champion stakes. Any disputes regarding eligibility will be dealt with subsequently.

Any queries please email KCNotifications@thekennelclub.org.uk

We appreciate the patience of competitors and exhibitors.
For more information please see thekennelclub.org.uk/resumptionofevents

JANUARY

January 1

(O) Coventry Ladies Kennel Society Sports Connexion, Mrs AE Defaye, 01262 851423, fedayewhippets@gmail.com

January 5

(O/WT) Essex Working Trials Society Danbury Park Farm, Chelmsford, Essex, Mrs PJ Bann, 01376 749153, P.bann@hotmail.com

(O/AG) Phase Purple Agility Training Newton Rigg Equestrian centre, Mrs F Nemeth, 07979 290579, fayeshetlandpony1@hotmail.co.uk

January 6

(O/AG) Agility Nuts Arena UK Ltd, Mr Sensky, 07760 252992, paul@sensky.co.uk

(O/AG) Agility Vision Field House Equestrian Centre, Mrs A Bailey, 01522 693392, agilityvision.alex@gmail.com

(PO) Lichfield Canine Society Staffordshire County Showground, Mr N Marley, lichfieldsecretary@hotmail.com

(O/AG) Pawsability Glenda Spooner Farm, Miss S Mosedale, 07788 916903, pawsability@outlook.com

(O/AG) Phase Purple Agility Training Newton Rigg Equestrian centre, Mrs F Nemeth, 07979 290579, fayeshetlandpony1@hotmail.co.uk

(O) South Wales Corgi Club Penyrheol Community Centre, Mrs W Rees, 01792 773544, alan.stadwen@btinternet.com

(O) Taunton & District Canine Association Wellsprings Leisure Centre, Mrs LP Creech, 01823 461699, tauntonanddistrictca@gmail.com

(O) West Of England Labrador Retriever Club Woolavington Village Hall, Mrs L Kent, 01823 421321, lucy_kent_0209@hotmail.com

January 7

(O) Ashford Faversham & District Canine Society Maidstone Market Hall, Ms CL Boggia, 07912 038891, boughtongreys@gmail.com

(O/OB) Elm Park Dog Training Club Cowdray Hall, West Thurrock, Essex, Mrs J Appleton, 01702 201346, appleton.julie@btinternet.com

(O) Golden Retriever Club Of Northumbria Bowburn Community Association, Mrs Greensmith, 01388 747139, tinagreensmith@live.co.uk

(O) Northern Counties Shetland Sheepdog Club West Cornforth Community Association, Miss J Clegram, 01207 507732, jayne_clegram@hotmail.com

(O/AG) Pawsability Glenda Spooner Farm, Miss S Mosedale, 07788 916903, pawsability@outlook.com

(O/AG) PointZero Onley Grounds Equestrian Complex, Mr A Clarke, 07942 729445

(L) Southampton & District Canine Association Wickham Community Centre, Mrs AJ Betts, 01590 682150, amandabetts@btconnect.com

(CH) Southern Dachshund Association Woking Leisure Centre, Woking, Surrey, Mrs W Starkey, wendygms@yahoo.co.uk

(O) Worcester & Malvern Canine Society Kennel Club Building at Stoneleigh Park, Ms M Sargent, 01530 249904, marionsargent.tegwani@gmail.com

January 13

(O) Coalville & District Canine Society Kennel Club Building at Stoneleigh Park, Mrs Hopewell, 01530 264691, davset45@yahoo.co.uk

(O/AG) Inspire Agility Moulton College Equestrian Centre, Ms RA Abrahams, 07734 232613, ruthabrahams3@hotmail.com

(O) Lancashire & Cheshire Dachshund Association Rosewood House, Mrs D Kirkwood-Emery, 01563 524606, dachs@helydon.co.uk

(O) Northern Cavalier King Charles Spaniel Society Thorpe Willoughby Village Hall, Miss AB Walker, nckcss.sec@virginmedia.com

(O) South Of England Irish Setter Club The Hamworthy Club, Mrs PM Harris, 01202 85303, canford.print@live.co.uk

(CH) Southern Counties Beagle Club The Village Hall (Steventon), Miss Kimber, 01474 814796, coachbarn.beagles@btinternet.com

(O/AG) Valley Farm Agility Club Otley College, Otley, Ipswich, Suffolk, IP6 9EY, Mr N Rudd, 01473 601924, vfarmnigel@yahoo.co.uk

(P/AG) Wilmslow Dog Training Club Myerscough College, Bilsborrow, Preston, Lancs, Mrs C Snowdon, wilmslowdtc@hotmail.co.uk

(O) Wiveliscombe & District Canine Society Wellsprings Leisure Centre, Mr MJ Masters, 01823 662503, wiveymembers@gmail.com

January 14

(O) Eastern Counties Cavalier King Charles Spaniel Society Harston Village Hall, Mr K Arrowsmith, 07970 150299, secretary@easterncavalier.co.uk

(O) Goyt Valley Gundog Society Leigh Leisure Centre, Mrs C Perkins, 07824 993959, colette.p@hotmail.co.uk

(O/AG) Inspire Agility Moulton College Equestrian Centre, Ms RA Abrahams, 07734 232613, ruthabrahams3@hotmail.com

(L) Isle Of Man Canine Society Jurby Parish Hall, Mrs BS Waggett, 01624 897527, b.waggett@manx.net

(O/AG) Kelluki Agility Merrist Wood College, Worplesdon, Guildford, Miss S Hatcher, 07920 405366, sjhatcher62@hotmail.com

(CH) London Bulldog Society Bracknell Sports and Leisure Centre, Bracknell, Berkshire, Miss SA Jay, 01622 739089, londonbulldogsocietysecretary@btinternet.com

(O) Pomeranian Club Baginton Village Hall, Mrs JA Pike, thepomeranianclub@hotmail.co.uk

(O) Redditch & District Canine Society Kennel Club Building at Stoneleigh Park, Mrs P Jameson, 07765 824495, pam.jameson@gmx.co.uk

(O) Three Ridings Labrador Club Thorpe Willoughby Village Hall, Mrs W Southwell, 01772 335930, teazledown@btconnect.com

(O/AG) Valley Farm Agility Club Otley College, Otley, Ipswich, Suffolk, IP6 9EY, Mr N Rudd, 01473 601924, vfarmnigel@yahoo.co.uk

(O) Wigan & District Canine Society Sutton Leisure Centre, Sutton, Merseyside, Miss E Hobson, 01942 714582, emmahobson15@talktalk.net

January 17

(O/AG) Dog Sports Derby Dog Sports Derby, Miss L Chudleigh, 07894 138436, laura.chudleigh1@gmail.com

January 18

(O) Alaskan Malamute Club of the United Kingdom Staffordshire County Showground, Mrs J Sheehan, secretary@alaskanmalamute.org.uk

(CH) Bullmastiff Association Staffordshire County Showground, Mr R Aston, 07971 554974, eternalpride@hotmail.co.uk

(O) Eastern Counties Rottweiler Club Staffordshire County Showground, Mrs M Monk, 07790 383468, MTomlinson@brinsworthmanorinfants.co.uk

(CH) Manchester Dog Show Society Staffordshire County Showground, Mr PJ Harding, 0151 430 7698, hardingproperties653@gmail.com

Events

(O) Northern Bullmastiff Club Staffordshire County Showground, Mr G Shirt, secretary@thenorthernbullmastiffclub.com

(CH) Southern Dogue De Bordeaux Society Staffordshire County Showground, Mrs TL Harrison, 07764 606228, cerisierkennels@yahoo.co.uk

January 20

(O/AG) IconiX Agility Shows Dog Sports Derby, Mr N Ellis, neil-ellis@hotmail.com

(O) Morecambe Bay & Cumbria Staffordshire Bull Terrier Club Staffordshire County Showground, Mr G Nicholson, 07427173333, mbcstbsec@gmail.com

(P/HTM) Paws 'N' Music Association Forest Oak Farm, Mrs G Pink, 07807 770969, busydogs@icloud.com

(O/OB) Solihull Dog Training Club Birmingham Rugby Club, Portway, Birmingham, Mrs J Wyatt, 0121 430 7147, jenniferannewyatt@hotmail.co.uk

(CH) South East Lhasa Apso Society Kennel Club Building at Stoneleigh Park, Mrs T Lightfoot, redlightfoot@aol.com

(O) South East Lhasa Apso Society Kennel Club Building at Stoneleigh Park, Mrs T Lightfoot, redlightfoot@aol.com

(L) Whippet Club Benson Parish Hall, Mrs ML Anderson, 01491 641140, enquiries@thewhippetclub.com

January 21

(O/AG) Agility Ability Easton & Otley College, Miss M Wright, 07706042020, agilityability@btinternet.com

(O/OB) Downlands Obedience Group Woodside Equestrian Centre, Miss RJ Mulrenan, 01903 877336, downlandsobediencegroup@gmail.com

(L/AG) English Shetland Sheepdog Club Working Section Dog Training Barn, Mrs LAA Lubbi, 01784 258334, layash2@aol.com

(CH) German Shorthaired Pointer Club Staffordshire County Showground, Mrs J Court, 01246 280883, ianbarbara.marimay2@btinternet.com

(O/AG) IconiX Agility Shows Dog Sports Derby, Mr N Ellis, neil-ellis@hotmail.com

(CH) Lancashire & Cheshire English Springer Spaniel Club Staffordshire County Showground, Mrs L McCourt, 01353 969483, woodspa20@gmail.com

(O) Large Munsterlander Club Staffordshire County Showground, Mr Graham, 07740 353439, secretary@largemunsterlanderclub.co.uk

(O) North West Staffordshire Bull Terrier Club Longridge Civic Hall, Longridge, Preston, Lancs, Ms C Crossman nee Uren, 01772 724045, crossmanclaire@yahoo.com

(O/AG) Phase Purple Agility Training Ponteland Leisure Centre, Callerton Road, Ponteland, Mrs F Nemeth, 07979 290579, fayeshetlandpony1@hotmail.co.uk

(O) Shetland Sheepdog Club Of Wales Beaufort Centre, Mr MG Light, 01761 452280, mike.light@btinternet.com

January 22

(O/AG) Phase Purple Agility Training Ponteland Leisure Centre, Callerton Road, Ponteland, Mrs F Nemeth, 07979 290579, fayeshetlandpony1@hotmail.co.uk

January 27

(O/WT) Avon Working Dog Training Society Westwood Farm, Keevil, Trowbridge, Mrs M Dawe, suedawe@btinternet.com

(CH/AG) Derbyshire Dog Agility Club Arena UK Ltd, Mr R Spencer, 01159 280998, Secretary@DerbyshireAgility.co.uk

(CH) Hampshire & Sussex Cocker Spaniel Club The Kennel Club Building, Mrs HP Moorat, 01202 874418, langleyburycockers@gmail.com

(O) Keeshond Club Roade Village Hall, Miss GM Clark, 01708 854920, geraldinemaryclark@gmail.com

(O) Newton Abbot & South Devon Canine Society Exeter Livestock Centre, Devon, Mrs D Fenn, debs.fenn@btinternet.com

(O) Queens Island Canine Club Connell Hill Equestrian Centre, Mrs AA Brown, alexaabrown47@gmail.com

(O/OB) Solihull Dog Training Club Birmingham Rugby Club, Portway, Birmingham, Mrs J Wyatt, 0121 430 7147, jenniferannewyatt@hotmail.co.uk

(O) Yorkshire, Lancashire & Cheshire Border Terrier Club Thorpe Willoughby Village Hall, Mrs T Green, 01302 726202, yorkslancs@outlook.com

January 28

(O) Border Counties Gundog Club Harrison & Hetherington Exhibition Centre, Mrs DK Douglas, 01228 576501, kay.douglas@live.co.uk

(O) Cardiff Canine Society Merthyr Tydfil Leisure Village, Mr MW Sanders, 02920 813402, martin.dog@hotmail.co.uk

(O/AG) Do Believe Dog Training World Horse Welfare, Mrs RJ Radbourne

(O) East Midlands Staffordshire Bull Terrier Club Overseal Village Hall, Overseal, DE12 6LU, Mr J Rogers, berrystock@hotmail.com

(O) Heywood & Radcliffe Canine Society Sutton Leisure Centre, Sutton, Merseyside, Mrs N Hall, 0161 761 3466, john.johnjo@hotmail.co.uk

(CH) Irish Wolfhound Society Sky Sports Connexion, Ryton On Dunsmore, Coventry, Mrs J Williams, 01634 660181, joan@mail.ip-technology.com

(O) Irish Wolfhound Society Sky Sports Connexion, Ryton On Dunsmore, Coventry, Mrs J Williams, 01634 660181, joan@mail.ip-technology.com

(O/AG) KS Training The Grange Equestrian Centre, Miss K Stickney, 07929 237921, kathrynstickney@btinternet.com

(O) Midland Chihuahua Club Ashby Leisure Centre, Mrs LD Ison, lynpix51@yahoo.co.uk

(L) Northern Pug Dog Club Thorpe Willoughby Village Hall, Mr R Lemon, richard.lemon@hotmail.com

(O/AG) Ogilvie Dogs Isla Farm, Mrs M Ogilvie

(CH) Poodle Club Bracknell Sports and Leisure Centre, Bracknell, Berkshire, Mrs S Pine-Haynes, 01483 277874, thepoodleclub@hotmail.co.uk

(O) South Eastern Welsh Springer Spaniel Club Bletchingley Village Hall, Mrs TJ Bennett, 07725 557943, tracy.sewssc@gmail.com

(O) South Western Great Dane Club Hoburne Cotswold, Broadway Lane, Mrs Gray, 07506 981127, cjc2712@hotmail.co.uk

(O) Stoke On Trent & District Gundog Club Biddulph Valley Leisure Centre, Mr G Hart, 07411 525526, grahamhart595@btinternet.com

(O) Wellingborough & District Canine Society Kennel Club Building at Stoneleigh Park, Miss A Mar-Gerrison, 01536 396252, annem65@virginmedia.com

(O) West Of England Cocker Spaniel Club Cricklade Town Hall, Mrs S Gregory, 07305 178221, bryanmccabe@gmail.com

(L) Wilmslow & Alderley Canine Society Chelford Village Hall, Knutford Rd, Lady CR Walsh, 01663 733230, charlotte.walsh@msn.com

FEBRUARY

February 3

(O/AG) Agility Vision Field House Equestrian Centre, Mrs A Bailey, 01522 693392, agilityvision.alex@gmail.com

(CH) British Dalmatian Club The Kennel Club Building, Mrs J Hopkin, juliehopkin31@btinternet.com

(O) British Dalmatian Club Kennel Club Building at Stoneleigh Park, Mrs J Hopkin, juliehopkin31@btinternet.com

(O) Darlington & District Canine Society Temple Park Leisure Centre, John Reid Rd, South Shields, Mrs Hancock, 01913 735895, hancocktricia317@gmail.com

(PO) Isle Of Ely Canine Society Oakridge Arena, Mr C Pack, 01476 419379, Lbengy@aol.com

(O/AG) Kelluki Agility Merrist Wood College, Worplesdon, Guildford, Miss S Hatcher, 07920 405366, sjhatcher62@hotmail.com

(O) Kent, Surrey & Sussex Labrador Retriever Club Bletchingley Village Hall, Mrs A Scutcher, 01255 871489, winsleywood@gmail.com

(O) London Reform Pekingese Association New Haw Community Centre, Miss JA Petters, 07771 800637, jaxpetters@gmail.com

(CH) Manchester & Counties Bulldog Club Holiday Inn Runcorn, Mrs E Simpson, 07903 129315, jackarhys-bulldogs@hotmail.co.uk

(CH) North Of England Rottweiler Club Thompson House Equestrian Centre, Mr JR Mackenzie, 01757 705355, j.r.mackenzie@btinternet.com

(O) North Of Ireland Pekingese Club Jethro Centre, Mr R Blevins, 028 38852880, roy@pablevins.co.uk

(O) Northern Counties Shih Tzu Club Thorpe Willoughby Village Hall, Mr T Crossland, 01924 382703, trevorcross25@gmail.com

(O) Northern Counties Shih Tzu Club Thorpe Willoughby Village Hall, Mr T Crossland, 01924 382703, trevorcross25@gmail.com

(O) Northumberland & Durham Collie Club Trimdon Village Hall (Hallgath Rd), Ms CP Moffat, kyleca1966@outlook.com

(CH) Parti-Coloured Cocker Spaniel Club The Kennel Club Building, Mrs GE Pearce-Gudger, 02476 403453, gillpearcegudger@yahoo.co.uk

(O/AG) Performance Agility Training North Allerton Equestrian Centre, Mr K Benson

(O/WT) Wakefield Dog Training Club Wakefield Dog Training Club, Mrs AJ Hartley-Havers, 01274 881688, amanda.h.h@blueyonder.co.uk

February 4

(O/AG) Agility Nuts Arena UK Ltd, Mr Sensky, 07760 252992, paul@sensky.co.uk

Events

(O) British Association For German Shepherd Dogs Barleyfields Equestrian Centre, Mrs Harrison, 07445 801650, walsallbagsdvp@gmail.com

(O) Cumberland Canine Association Penrith Leisure Centre, Miss LC Forrester, CumberlandCanine@hotmail.com

(O) East Kent Canine Society Lockmeadow Market, Maidstone, Kent, Mrs C Sharp, 01322 667733, affilato-spinoni@virginmedia.com

(O) Irish Setter Club Of Wales The Village Hall LLandrinio Powys, Mrs R Jones, 01639 891681, irsj@hotmail.com

(O/AG) Kelluki Agility Merrist Wood College, Worplesdon, Guildford, Miss S Hatcher, 07920 405366, sjhatcher62@hotmail.com

(CH) Labrador Retriever Club Of Wales Forest Oak Farm, Mrs M Barker, 01443 842585, secretary@labclubofwales.co.uk

(O) Merseyside Boxer Club Whiston Town Hall, Mrs M McArdle, 0151 531 6361, s.mcardle05@gmail.com

(O) Merseyside Boxer Club Whiston Town Hall, Mrs M McArdle, 0151 531 6361, s.mcardle05@gmail.com

(PO) Merseyside Gundog Club Sutton Leisure Centre, Sutton, Merseyside, Mrs A Moss, 01704 893128, ann@petparaphernalia.co.uk

(O) Midland & West Of England Great Dane Club Sky Sports Connexion, Ryton On Dunsmore, Coventry, Mr N Morgan, 01142 365098, neil99352@gmail.com

(O) Midland Border Terrier Club Asfordby Acres Sports Club, Mr B Wright, 01335 390572, bob@dabvalves.co.uk

(CH) Midlands Irish Setter Society The Kennel Club Building, Ms D Wilder, 0121 689 2325, Julie.greenan@blueyonder.co.uk

(O) North East Bull Terrier Club Bowburn Community Association, Mrs S Wheatley, 01670 813522, northeastbullterrierclub1904@gmail.com

(L) North West Labrador Retriever Club Sutton Leisure Centre, Sutton, Merseyside, Miss GA Oulton, 07917 755476, ousmilabradors@hotmail.co.uk

(O) Northumbria & Mercia Poodle Club West Cornforth Community Association, Mr R Mcauley, 07853 284770, ron.mcauley@yahoo.com

(O/AG) Performance Agility Training North Allerton Equestrian Centre, Mr K Benson

(L) Salisbury & South Wilts Canine Society Sparsholt College Equine Centre Indoor Arena, Mrs C Prowse, 01980 653923, contoul@btinternet.com

(O) Utility Breeds Association Of Wales Pontypool Active Living Centre, Mrs L Williams, 07885 422231, ubawsec@gmail.com

February 8

(O/WT) Leamington Dog Training Club Brinklow Youth Club, 43 Broad Street, Brinklow, Mrs K Wykes, 01788 823717, tarnforce@sky.com

February 10

(O) Affenpinscher Club Asfordby Acres Sports Club, Mrs AJ Teasdale, 01884 841463, tonsarne@outlook.com

(CH) Bulldog Club Of Wales Chepstow Leisure Centre, Chepstow, Mr J Lane, 02920 734631, anjefanbulldogs@ntlworld.com

(CH) Home Counties Cocker Spaniel Club Sky Sports Connexion, Ryton On Dunsmore, Coventry, Mrs E Thomas, 01664 567640, elaine@claramand-cockers.co.uk

(O/AG) Iconix Agility Shows Dog Sports Derby, Mr N Ellis, neil-ellis@hotmail.com

(O) Ilfracombe & District Canine Society Matford Centre, Mrs D Stanton, 01237 478783, denisestanton.ds@googlemail.com

(O/AG) Inspire Agility Moulton College Equestrian Centre, Ms RA Abrahams, 07734 232613, ruthabrahams3@hotmail.com

(CH) Midland Boxer Club The Kennel Club Building, Mr GK Mullis, 01773 779864, idleforde@aol.com

(O) Midland Boxer Club Kennel Club Building at Stoneleigh Park, Mr GK Mullis, 01773 779864, idleforde@aol.com

(CH) Midland Collie Club The Kennel Club Building, Mrs H Walder, 01767 652873, secretary@midlandcollieclub.co.uk

(PO) National Working & Pastoral Breeds Society Sports Connexion, Miss L Mottram, 07447 081115, lucymottram@icloud.com

(O) Northern & Midland Counties Beagle Club Shirland Village Hall, Alfreton, Derby, Mrs CM Walker, 01226 390199, nmcbc@talktalk.net

(O/AG) Pawsability Glenda Spooner Farm, Miss S Mosedale, 07788 916903, pawsability@outlook.com

(O/AG) Phase Purple Agility Training Kirkley Hall, Mrs F Nemeth, 07979 290579, fayeshetlandpony1@hotmail.co.uk

(O/OB) Solihull Dog Training Club Birmingham Rugby Club, Portway, Birmingham, Mrs J Wyatt, 0121 430 7147, jenniferanewyatt@hotmail.co.uk

(O) South Of England Pomeranian Club Steventon Village Hall, Stevenston, Oxford, Mrs AJ Orchard, 01794 522175, manatek@msn.com

(O) South Wales Kennel Association Merthyr Tydfil Leisure Village, Miss BE M Croucher, 01792 470417, bridgetcroucher01@gmail.com

(O/AG) Valley Farm Agility Club Otley College, Otley, Ipswich, Suffolk, IP6 9EY, Mr N Rudd, 01473 601924, vfarminigel@yahoo.co.uk

(O) Western Staffordshire Bull Terrier Society Mark Village Hall, Mrs L Emery, secretarywsbts@outlook.com

February 11

(PO) Ashington & District Canine Society Temple Park Leisure Centre, South Shields, Mrs J Purves, 01670 503420, junepurves9@gmail.com

(O) Barrow & District Kennel Association Kendal Leisure Centre Kendal, Mrs J Graham, 01229 464203, nyliram.gundogs@gmail.com

(O) Birmingham Afghan Hound Club The Kennel Club Building, Mrs C Cheesman, 01788 336113, secretary@bahc.org.uk

(O) Birmingham Afghan Hound Club The Kennel Club Building, Mrs C Cheesman, 01788 336113, secretary@bahc.org.uk

(O) Giant Schnauzer Club Tomlinsons Boarding Kennels, Mrs A Kidd, 07958 518460, gscsecretary2020@gmail.com

(CH) Golden Retriever Club Of Wales Forest Oak Farm, Mrs L Williams, 07527 412650, grcwales@hotmail.com

(O/AG) Iconix Agility Shows Dog Sports Derby, Mr N Ellis, neil-ellis@hotmail.com

(O/AG) Inspire Agility Moulton College Equestrian Centre, Ms RA Abrahams, 07734 232613, ruthabrahams3@hotmail.com

(O) Lancashire Heeler Club Grimsargh Village Hall, Mrs EA Thwaite, thelancashireheelerclub@gmail.com

(L) Macclesfield & District Canine Society Chelford Village Hall, Knutford Rd, Lady CR Walsh, 01663 733230, charlotte.walsh@msn.com

(O) Midland Counties Airedale Terrier Club Overseal Village Hall, Overseal, DE12 6LU, Miss J Martin, 01530 261041, toba73@supanet.com

(CH) Midland English Setter Society The Kennel Club Building, Mrs MJ Sharples, 07834 364477, kanietersetters@gmail.com

(CH) Midland English Setter Society The Kennel Club Building, Mrs MJ Sharples, 07834 364477, kanietersetters@gmail.com

(CH) Miniature Dachshund Club Sky Sports Connexion, Ryton On Dunsmore, Coventry, Mrs CL West, west.tina@hotmail.co.uk

(O/AG) Pawsability Glenda Spooner Farm, Miss S Mosedale, 07788 916903, pawsability@outlook.com

(O) Pennine & Yorkshire Welsh Corgi Association Cabus Village Hall, Preston, Miss TJ Irving, 07906 484191, twinancorgis@aol.com

(O/AG) Phase Purple Agility Training Kirkley Hall, Mrs F Nemeth, 07979 290579, fayeshetlandpony1@hotmail.co.uk

(O) Portsmouth & Southsea Kennel Association Havant Leisure Centre, Civic Centre Road, Havant, Mrs J Gorman, 02392 255864, eijgorman@virginmedia.com

(L) Scarborough & District Canine Association Ganton Village Hall, Ganton, Nr Scarborough, Mr D Hick, 01723 864642, datiros@outlook.com

(CH) South Of England Bulldog Society South Of England Agricultural Showground, Ardingly, Haywards Heath, Mrs K Wells, 01243 601727, kellylinmist@me.com

(O) Southern Bernese Mountain Dog Club Bletchingley Village Hall, Mrs PL Goodyear, 07766 880162, goodyear685@btinternet.com

(CH) Southern Bullmastiff Society Holiday Inn Runcorn, Mrs DC Todd, 07786 008499, denbully@hotmail.co.uk

(O) Terrier Club Of South Wales Monmouth School Sports Hall, Miss R Bevan, rbevan90@hotmail.co.uk

(O/OB) United Spaniel Association Derby College Equestrian Centre, Ms M Sargent, 01530 249904, marionsargent.tegwani@gmail.com

(O/R) United Spaniel Association Derby College Equestrian Centre, Ms M Sargent, 01530 249904, marionsargent.tegwani@gmail.com

(O/AG) Valley Farm Agility Club Otley College, Otley, Ipswich, Suffolk, IP6 9EY, Mr N Rudd, 01473 601924, vfarminigel@yahoo.co.uk

(O) Welsh Corgi League Cabus Village Hall, Preston, Mrs M Hoggarth, 0191 529 4118, wclsexsec10@aol.com

(O) Welsh Corgi League Cabus Village Hall, Preston, Mrs M Hoggarth, 0191 529 4118, wclsexsec10@aol.com

(O) Welsh Springer Spaniel Club Of South Wales Earlswood Community Hall, Earlswood, Nr Chepstow, Mrs S Evans, 01495 271966, welshspringerspaniel.csw@gmail.com

Events

February 14

(O) United Retriever Club Kennel Club Building at Stoneleigh Park, Mrs A Scutcher, 07867 514300, dickjen.dimmock@hotmail.co.uk

February 16

(L) Loughborough & District Canine Society Kegworth Village Hall, Nottingham Road, Kegworth, Derbyshire, Mrs MS Ward, 01530 243551, zabarettsward@btinternet.com

(O/WT) North East Counties Working Trials Society Northumberland Canine Centre, Mrs V Hunter, vicky.hunter21@yahoo.co.uk

February 17

(O) British Boxer Club Drayton Village Hall, Mrs LJW Clark, 07887 566899, lauradtp@aol.com

(O) Bull Terrier Club Royal Court Hotel, Keresley, Coventry, Mrs TA Westwood, secretary@thebullterrierclub.co.uk

(O) Camborne Redruth Canine Society Royal Cornwall Showground, Wadebridge, Mrs LJ Hosking, 01736 753864, tarquas@yahoo.co.uk

(O) Cotswold Boxer Club Drayton Village Hall, Mr TN Hutchings, 07711 167852, winuwuk@btinternet.com

(PO) Dukeries [Notts] Gundog Club Oakridge Arena, Dr R Suchett-Kaye, 01623 835694, cadet22@hotmail.co.uk

(O) Newark & District Canine Society Newark Showground, Lincoln Road, Newark, Mr I Sexton, 01777 706255, isexton42@yahoo.com

(O) North Of England Scottish Terrier Club Grenoside Community Centre, Mrs C Haigh, 01226 742910, christinehaigh52@gmail.com

(O) Queens Island Canine Club Connell Hill Equestrian Centre, Mrs AA Brown, alexaabrown47@gmail.com

(CH) Southern Miniature Bull Terrier Club Royal Court Hotel, Keresley, Coventry, Mrs ME Hughes, 02920 791658, maureengraymorhughes@gmail.com

(CH) Welsh Springer Spaniel Club Sky Sports Connexion, Ryton On Dunsmore, Coventry, Mr P Barnaby, 07876 142331, secretary@wssc.org.uk

(O) Welsh Springer Spaniel Club Sports Connexion, Mr P Barnaby, 07876 142331, secretary@wssc.org.uk

(PO) West Midland Terrier Society Kennel Club Building at Stoneleigh Park, Ms M Davies, 07734 672805, wstry@hotmail.com

February 18

(O) Cleveland Dog Society Eston Sports Academy, Normanby Road, Middlesbrough, Miss AB Walker, alison.walker20@ntlworld.com

(O) Cocker Spaniel Club Of Lancashire Mellor Village Hall, Mrs D Grice, 01744 819045, kynacockers@blueyonder.co.uk

(CH) East Of England Afghan Hound Club The Kennel Club Building, J Hurl, 01280 816007, jean.hurl@btinternet.com

(O) Gloucester & District Canine Society Avon Hall, Three Counties Showground, Malvern, Worcs., Mrs C Stangroom, 01453 756460, stangroomcindy0@gmail.com

(PO) Guildford & District Canine Society South Of England Show Ground, Mrs HI Male, 01903 767582, hilary_male@hotmail.com

(O/AG) Inspire Agility Moreton Morrell College of Agriculture, Moreton, Morrell, Ms RA Abrahams, 07734 232613, ruthabrahams3@hotmail.com

(CH) Japanese Shiba Inu Club Of Great Britain Tomlinsons Boarding Kennels, Miss KA Jones, 01942 715282, Karen@almolka.com

(O) London Airedale & Fox Terrier Club Merstham Village Hall, Mrs LPJ England, 01366 328826, l.England@mypostoffice.co.uk

(O) Longcoat Chihuahua Club Polesworth Memorial Hall, Mrs SJ Lee, 01635 278510, susanlee834@btinternet.com

(O) Midland Chow Chow Club Nether Whitacre Village Hall, Coleshill, Warwicks, Mrs P Godber, 01773 744634, Lechan.stepam@outlook.com

(CH) Midland Counties Poodle Club Sky Sports Connexion, Ryton On Dunsmore, Coventry, Mrs B Cherry, 01827 872258., Shanandi@btinternet.com

(O) North Of England Keeshond Club Netherton Village Hall, Mrs AJ Stephenson, 01759 304773, secretary@north-of-england-keeshond-club.co.uk

(O) Northern Borzoi Association Shirland Village Hall, Alfreton, Derbys, Ms Y Odell, 01636 700421, nbasecretary1975@gmail.com

(O) Northern Counties Dachshund Association Coronation Hall, Mrs L Bell, 01914 142701, tolberg-gsd@tiscali.co.uk

(CH) Northumberland & Durham Labrador Retriever Club Haltwhistle Leisure Centre, Ms C Mitchell, 01915 211185, ndlabclub@gmail.com

(O) Potteries Staffordshire Bull Terrier Club Betley Village Hall, Mr D Mckimm, psbtc_sec01@btinternet.com

(CH) Scottish Shetland Sheepdog Club Lanark Agricultural Centre, Lanark, Ms A Smith, 07890 295664, smithanne623@gmail.com

(O/HTM) South of England Heelwork to Music Club Oxshott Village Centre, Mrs AJ Wilde, 07718 042821, alison@champwilde.f9.co.uk

(O) South West Welsh Corgi Club Community Centre Pucklechurch, Mrs C Turner, 07790 512662, cottonfields@mypostoffice.co.uk

(CH) South West Whippet Club Wellsprings Leisure Centre, Mrs AC Prowse, 01769 560014, freehamletwhippet@btinternet.com

(PO) Sporting Terrier Association Of Yorkshire Thrybergh Academy, Mr T West, 01977 279962, thomas@tomlyndon.co.uk

(O) St Helens & District Canine Society Sutton Leisure Centre, Sutton, Merseyside, Mr J Purnell, 01744 819446, MGrindley@aol.com

(O) Terrier Club Of Devon And Cornwall Culm Valley Sports Centre, Cullompton, Mrs JP Rundle, 01752 880483, jean.rundle46@btinternet.com

(O) Yorkshire Collie Club Eggborough & Whitley Village Hall, Mrs CA Biggs, 01246 451526, chrisbiggs63@gmail.com

February 20

(L) Ripon & District Canine Society Ripon Racecourse, Boroughbridge Road, Ripon, Mrs N Calvert, 07730 426020, neilcorner@hotmail.co.uk

February 22

(O/AG) Dog Sports Derby Dog Sports Derby, Miss L Chudleigh, 07894 138436, laura.chudleigh1@gmail.com

(CH/WT) North West Working Trials Society Lower Withington Parish Hall, Mrs R Smyth, 07778 396015, secretaryNWWTS@gmail.com

February 24

(O/AG) Agility Ability Easton & Otley College, Miss M Wright, 07706 042020, agilityability@btinternet.com

(O/OB) Bangor (Co Down) District Dog Training Club St Patrick's Parish Hall, Victoria Avenue, Newtownards, Mrs Mckittrick, bangordtc@gmail.com

(O) Beagle Association Roade Village Hall, Mrs J Thornton, secretarybeagleassociation@gmail.com

(CH) British Manchester Terrier Club Shenstone Village Hall, Ms Owczarek, 07525 630165, Secretary@manchester-terrier-club.co.uk

(O) British Manchester Terrier Club Shenstone Village Hall, Ms Owczarek, 07525 630165, Secretary@manchester-terrier-club.co.uk

(O) Cardigan Welsh Corgi Association Mappleborough Green Village Hall, Mr H Bishop, 01269 844846, hd2bish@btinternet.com

(O) Curly Coated Retriever Club Kennel Club Building at Stoneleigh Park, Miss VJ Hayes, 07825 157745, vickicccsecretary@gmail.com

(O) Dachshund Club Sports Connexion, Mr LJ Cross, 07985126051, dachshundclub1@gmail.com

(CH) German Shepherd Dog Club Of Kent Brook Farm Training Centre, Mrs EA Lowe, 01843 846572, e.lowe960@btinternet.com

(O/AG) Inspire Agility Moreton Morrell College of Agriculture, Moreton, Morrell, Ms RA Abrahams, 07734 232613, ruthabrahams3@hotmail.com

(CH) King Charles Spaniel Association Tomlinson Canine Centre, Upper Grange Farm, Ratby Lane, Markfield, Mr J Blewett, 01568 701885, blewettj46@gmail.com

(O/AG) KS Training The Grange Equestrian Centre, Miss K Stickney, 07929 237921, kathrynstickney@btinternet.com

(O) Midland Bedlington Terrier Club Corley Village Hall, Coventry, Mrs YE Bannister, 07813 450575, mbtc.secretary@gmail.com

(O) Newfoundland Club Kennel Club Building at Stoneleigh Park, Mrs RE Hutchinson, 07718 740756, secretary@thenewfoundlandclub.co.uk

(CH) North Of England Dalmatian Club Stanley Sheldon Hall, Mrs M Cuthbertson, 01625 524121, secretary@noedc.com

(O) North Of England Dalmatian Club Stanley Sheldon Hall, Mrs M Cuthbertson, 01625 524121, secretary@noedc.com

(CH) Northern Dogue de Bordeaux Club Milton Equestrian Centre, Mrs L Bamforth, 07715 553769, Lindseybamforth@hotmail.com

(CH) Northern Schnauzer Club Newark & Notts Showground, Winthorpe, Newark, Miss CM Ellingworth, 01909 384214, doncleve@me.com

(O) Northern Schnauzer Club Newark & Notts Showground, Winthorpe, Newark, Miss CM Ellingworth, 01909 384214, doncleve@me.com

(O/AG) Ogilvie Dogs Isla Farm, Mrs M Ogilvie

(O/AG) Phase Purple Agility Training Croft Top Farm, Mrs F Nemeth, 07979 290579, fayeshetlandpony1@hotmail.co.uk

Events

(O/OB) Solihull Dog Training Club Birmingham Rugby Club, Portway, Birmingham, Mrs J Wyatt, 0121 430 7147, jenniferanewyatt@hotmail.co.uk

(O) Three Counties Pekingese & Cavalier Society Churchdown Community Centre, Miss SJ Webber, 01452 530002, sunsante1@yahoo.com

(O) Torquay & District Canine Society Exeter Livestock Centre, Devon, Mrs D Fenn, deb.s.fenn@btinternet.com

February 25

(O) Billingham Synthonia Canine Society Temple Park Leisure Centre, South Shields, Mrs C Pearson, 01914 950253, carole.dodds@blueyonder.co.uk

(O) Cheltenham & District Canine Society Kennel Club Building at Stoneleigh Park, Mrs L Wilson, loiswilsonipad@gmail.com

(CH) Chihuahua Club Of South Wales Forest Oak Farm, Mr Green, 01443 313766, ellochi@hotmail.co.uk

(O) Chihuahua Club Of South Wales Forest Oak Farm, Mr Green, 01443 313766, ellochi@hotmail.co.uk

(O) Downlands Staffordshire Bull Terrier Club Farnham Sea Cadets Hall, Mrs Kemp, 01420 549074, vickie@flametip.com

(O/AG) Inspire Agility Moreton Morrell College of Agriculture, Moreton, Morrell, Ms RA Abrahams, 07734 232613, ruthabrahams3@hotmail.com

(O) Kent County Canine Association Market Hall, Maidstone, Kent, Miss M Horn, 07593 565667, maxinehorn@hotmail.com

(O) London & Home Counties Boxer Club Fairlands Community Centre, Mrs V Nicks, 01885 482891, vivianicks@outlook.com

(CH) Midland Yorkshire Terrier Club Pelsall Community Centre, Station Road, Pelsall, Ms L Brickley, 01803 613355, lyndabky@outlook.com

(O) Midland Yorkshire Terrier Club Pelsall Community Centre, Station Road, Pelsall, Ms L Brickley, 01803613355, lyndabky@outlook.com

(O) North East Border Collie Club Hurworth Community Centre, Hurworth, Mrs J Grant, 01325 378252, chrisandjan7@hotmail.com

(L) North Eastern Staffordshire Bull Terrier Club West Cornforth Community Association, Miss JME McLaughlan, 01642 783948, darcysbt2@aol.com

(O/OB) North West Kent Dog Training Club Ditton Community Centre - Kent, Mrs E Restell, troykait@msn.com

(O/AG) Phase Purple Agility Training Croft Top Farm, Mrs F Nemeth, 07979 290579, fayeshetlandpony1@hotmail.co.uk

(CH) Pomeranian Club Of South Wales The Drill Hall, Mrs KM Coombs, 01792 460933, toydogs65@yahoo.com

(O) Pomeranian Club Of South Wales The Drill Hall, Mrs KM Coombs, 01792 460933, toydogs65@yahoo.com

(L) Rhyl Canine Society Trefnant Village Hall & Memorial Field, Mr AE Burscough, 01352 711964, tony.burscough@btinternet.com

(O) South Yorkshire Whippet Club Speedwell Rooms, Mrs C Perkins, 07824 993959, colette.p@hotmail.co.uk

(O) South Yorkshire Whippet Club Speedwell Rooms, Mrs C Perkins, 07824 993959, colette.p@hotmail.co.uk

(O) Tibetan Terrier Association Hawkstone Park Hotel, Mr MW James, 01536 762111, waterley@f2s.com

(O) West Of England & South Wales Airedale Terrier Club Mark Village Hall, Mr MD Hacker, 01873 890737, info@airedaleclub.org.uk

(L) Westmorland Canine Association Preston Patrick Memorial Hall, Mrs H Gilpin, 01524 761817, otterbobs@tiscali.co.uk

(O/OB) Wirral Alsatian Training Society Kelsall Equestrian & Conference Centre, Ms N Fildes-Moss, 01513 346432, watsmembership.2022@outlook.com

(O) Yorkshire Gundog Club The Exhibition Hall, York Auction Centre, Mrs PM Colton, 01833 627192, patsycolton@btinternet.com

February 26

(CH/WT) Yorkshire Working Trials Society West Yorkshire Sports & Social Club, Wakefield, Mrs S Rose, 01944 738513, sallyerose@msn.com

MARCH

March 1

(O/WT) East Anglian Working Trials Training Society Rearing Shed, Mr Theobald, lestheobald@btinternet.com

March 2

(O/AG) Agility Vision Field House Equestrian Centre, Mrs A Bailey, 01522 693392, agilityvision.alex@gmail.com

(PO) Ashton In Makerfield Canine Society Leigh Leisure Centre, Mrs AL Biggs, 01695 623539, kiahmistwi@gmail.com

(CH) Boston Terrier Club Roade Village Hall, Ms J Glynn, 07375 059066, bostonterrierclubsecretary@yahoo.com

(CH) Boston Terrier Club Roade Village Hall, Ms J Glynn, 07375 059066, bostonterrierclubsecretary@yahoo.com

(CH) British Collie Club Sky Sports Connexion, Ryton On Dunsmore, Coventry, Mrs G Howard, erjoncollies@gmail.com

(CH) Bulldog Club (Incorporated) Queen Elizabeth School, Miss SE Hanley, info@blenhiemstar.co.uk

(CH) Cavalier King Charles Spaniel Club The Kennel Club Building, Mrs K Hampton Lee, secretary@thecavalierclub.co.uk

(L) Cheviot & Berwick Canine Society Glendale Middle School, Wooler, Northumberland, Mrs L Nesbitt, 01665 602961, lesleyanesbitt@gmail.com

(CH) East Anglian Labrador Retriever Club One Leisure St Ives, Mrs C Allen, 01206 396541, angela.mitchell@btinternet.com

(O) Midland Cairn Terrier Club Hasland Village Hall, Mrs L Firth, 01623 472177, linda.firth@sky.com

(O) Midland Cairn Terrier Club Hasland Village Hall, Mrs L Firth, 01623 472177, linda.firth@sky.com

(O) Midland English Springer Spaniel Society Birdwell Community Centre, Birdwell, Barnsley, Mrs K Woodward, 01709 896663, wadesoness@talktalk.net

(O/AG) Newlands Working Dog Society Merrist Wood College, Worplesdon, Guildford, Mrs JM Meekings, 01276 475225, judymeekings@yahoo.co.uk

(O) North Of Ireland Cocker Spaniel Club St Clare Community Hall, Miss LE Bailie, 02897 562546, thornbrook@talk21.com

(O/AG) Pawsability Glenda Spooner Farm, Miss S Mosedale, 07788 916903, pawsability@outlook.com

(O/AG) Phase Purple Agility Training Kirkley Hall, Mrs F Nemeth, 07979 290579, fayeshetlandpony1@hotmail.co.uk

(CH) Scottish Terrier Breeders & Exhibitors Association Old Mill Hall, Grove, Wantage, Mrs A Dauncey, 01952 252562, annedauncey@aol.com

(O) Wath, West Melton & District Canine Society Newark & Notts Showground, Winthorpe, Newark, Mrs C Foster, 07917 116213, fostebriebriards@sky.com

(O) West Riding Dachshund Association Speedwell Rooms, Mrs J Kay, 01709 510796, west-riding-dachshund@hotmail.co.uk

(L) York Canine Association Thorpe Willoughby Village Hall, Mr Macklam, 07306 263329, elspeth.thornton@gmail.com

March 3

(PO) Bridgend & District Kennel Association Cwmbrian Stadium, Mrs C Popp, Bridgend.dka.sec@hotmail.com

(PO) Coventry & District Gundog Society Sports Connexion, Miss M Morgan, 01159 286389, michellejmorgan@gmail.com

(O/OB) Downlands Obedience Group Woodside Equestrian Centre, Miss RJ Mulrenan, 01903 877336, downlandsobediencegroup@gmail.com

(O) Eastern Counties Golden Retriever Club Red Lodge Millennium Hall, Red Lodge, Suffolk, Miss N Barber, 07879850891, nadinebarber@btinternet.com

(O) Folkestone Hythe & District Canine Society Market Hall, Maidstone, Kent, Mrs K Woolnough, 07768 381536, woolnough@mchenry.plus.com

(O) Irish Red & White Setter Club Of Great Britain Bearley Village Hall, Mrs A Bloxham, 07753 835380, ajb@jeffbloxham.com

(O) Irish Red & White Setter Club Of Great Britain Bearley Village Hall, Mrs A Bloxham, 07753 835380, ajb@jeffbloxham.com

(O) Mid Western Shetland Sheepdog Club Chelford Village Hall, Knutford Rd, Mrs K Hateley, 07773 072167, kayelainehateley@gmail.com

(O) Northern Counties Chihuahua Club Lightning Club, Mrs E Waddington, 01768 840603, spindlepoint.chis@btinternet.com

(L) Northern Counties Staffordshire Bull Terrier Club Thorpe Willoughby Village Hall, Mrs King, 0113 263 2462, Kylorda1997@gmail.com

(O/AG) Pawsability Glenda Spooner Farm, Miss S Mosedale, 07788 916903, pawsability@outlook.com

(CH) Polish Lowland Sheepdog Club Arkwright Centre, Chesterfield, Mrs D Mottram, 01246 205166, mybeards.pon@btinternet.com

(O) Polish Lowland Sheepdog Club Arkwright Centre, Chesterfield, Mrs D Mottram, 01246 205166, mybeards.pon@btinternet.com

(CH) South Western Tibetan Spaniel Club The Old Mill, Miss HJ Simper, 01235 850289, hjs.clydum@hotmail.co.uk

(O) Southern Border Terrier Club Churchdown Community Centre, Mrs WM C Mooney, 01483 235299, wendy@mooneys.co.uk

Events

(CH) Yorkshire Bull Terrier Club Grenoside Community Centre, Mr B Smalley, briden@blueyonder.co.uk

March 5

(CH/WT) Lincolnshire German Shepherd Dog & All Breeds Training Soc Lincolnshire GSD & ABTS Training Ground, Mrs Hines, 01522 538412, lgsdenquiries94@gmail.com

March 7

(CH) Crufts NEC Ltd, Birmingham, Mrs C Guiver, 01296 318540, CruftsMailbox@thekennelclub.org.uk

March 9

(P/AG) Tunbridge Wells & District Canine Society Hadlow College, Mrs LJ Grinham, 01892 523481, linda.grinham777@btinternet.com

March 10

(O/AG) Barnstaple & District Dog Training Society Grange Equestrian Centre, Mr Mccarthy, barnstapledogagility@gmail.com

(O/AG) Tunbridge Wells & District Canine Society Hadlow College, Mrs LJ Grinham, 01892 523481, linda.grinham777@btinternet.com

March 15

(O/WT) Iceni Working Trials Club Brickhouse Farm, Mrs C Dean, 01255 852511, secretary.iceni@gmail.com

March 16

(O) Exeter & County Canine Society Exeter Livestock Centre, Devon, Mrs T Conibere, 01392 975281, exeterandcountycanine@gmail.com

(O) Isle Of Wight Gundog Club Ryde Academy, Mrs S Stables, 01983 531604, stables5979@hotmail.co.uk

(O) Italian Greyhound Club Yelvertoft Village Hall, Mrs G Bird, 01296 485287, gdbird63@gmail.com

(O/AG) Kelluki Agility Merrist Wood College, Worplesdon, Guildford, Miss S Hatcher, 07920 405366, sjhatcher62@hotmail.com

(PO) North & South Shields Canine Society Temple Park Leisure Centre, John Reid Rd, South Shields, Mrs A Scott, 01287 201041, poppy1709@gmail.com

(O) North Wales Cocker Spaniel Club Trefnant Village Hall & Memorial Field, Miss A Hughes, 01745 353715, ann.hughes2@talktalk.net

(O) Northern Griffon Bruxellois Club Hoghton Village Hall, Preston Road, Hoghton, Lancs, Mrs MJ Cook, 01347 810514, margaret457@btinternet.com

(CH) South Wales Corgi Club Penyrheol Community Centre, Mrs W Rees, 01792 773544, alan.stadwen@btinternet.com

(CH) Three Ridings Labrador Club Costello Sports Centre, Kingston Upon Hull, Mrs W Southwell, 01772 335930, teazledown@btconnect.com

(CH/AG) Wyre (Lancs) Agility Club Myerscough College, Preston, Mrs AM Handley, 07752 700123, anne.handley@outlook.com

(O) Yorkshire Terrier Club Drayton Village Hall, Mrs D Rich, 07713 876895, ytcsec@outlook.com

March 17

(O/AG) Agility Ability Easton & Otley College, Miss M Wright, 07706 042020, agilityability@btinternet.com

(CH) Border Collie Club Of Great Britain The Kennel Club Building, Miss A Gowing, 0121 471 4445, bccgb@outlook.com

(O) Bull Terrier Club Of Wales Miners Welfare Hall, Mrs A Probert, 01685 814539, annekeprobert@yahoo.co.uk

(O) Chichester & District Canine Society Arun Leisure Centre, Felpham, Bognor Regis, Mrs N Coe, 01243 604046, contact@chichestercaninesociety.co.uk

(L/AG) Cornwall Agility Club Chiverton Riding Centre, Blackwater, Cornwall, Miss N Lawer, 01726 852378, kimlawer28@gmail.com

(O) Four Counties Beagle Club Bowburn Community Association, Mr B Foster, 01325 320960, jphildan@aol.com

(O) Gateshead Metropolitan Borough Canine Society Temple Park Leisure Centre, South Shields, Mrs L McBeth, 0191 413 7689, laurel.mcbeth@btinternet.com

(O) Hungarian Vizsla Club Brackley Leisure Centre, Mrs H McCormack, 01387 376710, hmcormat0@gmail.com

(L) Mannin Kennel Association Jurby Parish Hall, Miss SM Slann, 01624 622318, sanslann@manx.net

(O) Midland Afghan Hound Club Greasley Sports Centre, M Bloor, 01773 715054, sec@mahc.co.uk

(CH) Midland Lakeland Terrier Club Shenstone Village Hall, Ms H Ashe, 0121 355 4562, hrileyashe@gmail.com

(O) Midland Lakeland Terrier Club Shenstone Village Hall, Ms H Ashe, 0121 355 4562, hrileyashe@gmail.com

(O) North Staffs Canine Society Biddulph Valley Leisure Centre, Mr R Jones, robjones.loomer@gmail.com

(O) Northern Counties Sporting Terrier Association Ferryhill Leisure Centre, Ferryhill, Co Durham, Mrs G Griffiths, 01287 677526, gillygriff61@gmail.com

(O) Oswestry & District Kennel Association The Agricultural Showground, nr Oswestry, Shropshire, Mrs R Webster, 01691 622332

(CH) Shetland Sheepdog Club Of Wales Pontypool Active Living Centre, Mr MG Light, 01761 452280, mike.light@btinternet.com

(CH) South Wales Boxer Club Forest Oak Farm, Mr MR James, 07587 181643, maromad@sky.com

(CH) South Western Golden Retriever Club Hutton Moor Leisure Centre, Miss S Porter, 01803 712282, portersusan69@gmail.com

(O) South Western Toy dog Club Sedgemoor Auction Centre, Somerset, Mr P Boot, 01803 553345, barotoba@btinternet.com

(O) Southern Pointer Club Chieveley Village Hall & Recreation Centre, Mrs C Stangroom, stangroomcindy0@gmail.com

(O) Spire Toy Dog Society Alfreton Leisure Centre, Miss L Simmons, 07738 272624, petitpom@talktalk.net

(CH) West Of England Bull Terrier Club Warmley Community Centre, Warmley, Bristol, Mrs ME Hughes, 02920 791658, maureengraymorhughes@gmail.com

(O) Whitehaven & District Canine Association Kendal Leisure Centre Kendal, Mrs KC Newman-Jones, 01768 779394, knj@newman-jones.com

(O) Woolwich Bexley & District Canine Association Maidstone Agricultural Hall, Lockmeadow Market, Mr J Swinge, 01702 230072, balthazar.pugs@gmail.com

(CH/AG) Wyre (Lancs) Agility Club Myerscough College, Preston, Mrs AM Handley, 07752 700123, anne.handley@outlook.com

(O) Yorkshire Cocker Spaniel Club The Village Hall, Thorpe, Mrs C Welch, 01439 770793, carhowelcss@aol.com

March 18

(O/WT) Hampshire Working Trials Society North Boarhunt Parish Hall, Fareham, Hampshire, Mrs C Falla, 01243 379422, claire.falla@yahoo.co.uk

March 20

(CH/WT) East Anglian Working Trials Training Society Rearing Shed, Mr Theobald, lestheobald@btinternet.com

March 21

(L) Burnley & District Canine Society St Lukes Church Hall, Brierfield, Lancashire, Mr S Provost, 01706 874384, dawnmist.beardies@gmail.com

March 23

(O) Basset Fauve De Bretagne Club Tomlinsons Canine Centre, Upper grange farm Ratby, Mr BR Jones, 07875 538454, barry.robert.jones@gmail.com

(CH) Basset Griffon Vendeen Club The Kennel Club Building, Mrs DD Reid, 01235 831217, maudaxibgv@gmail.com

(O) Basset Griffon Vendeen Club The Kennel Club Building, Mrs DD Reid, 01235 831217, maudaxibgv@gmail.com

(O) Beagle Club Steventon Village Hall, Steventon, Oxford, Mrs NJ Peterson, 07766 131116, Troopersway@yahoo.co.uk

(O/HTM) Free-Paws HTM IABTC, Miss A Briggs, 01274 673980, free-paws@talktalk.net

(L) Hull & East Riding Canine Society Woodmansey Village Hall, Long Lane, Woodmansey, Mrs Lovatt, 07885 681096, mowcher@sky.com

(O/AG) Inspire Agility Moreton Morrell College of Agriculture, Moreton, Morrell, Ms RA Abrahams, 07734 232613, ruthabrahams3@hotmail.com

(CH) Irish Setter Breeders Club Stoneleigh (Kennel Club Building), Miss J Parsons, 07717 325080, jlfurby@aol.com

(O) Irish Setter Breeders Club Stoneleigh (Kennel Club Building), Miss J Parsons, 07717 325080, jlfurby@aol.com

(O) National Bedlington Terrier Club Thorpe Willoughby Village Hall, Miss J Oxbury, bedlingtonnational@gmail.com

(CH) South Wales & Monmouthshire Cocker Spaniel Club Forest Oak Farm, Mr I Hillier, 01633 893230, ian_hillier@ayrin.co.uk

(CH) South Western & Wales Poodle Club Thornbury Leisure Centre, Thornbury, Gloucestershire, Mr P Langdon, atastar@blueyonder.co.uk

March 24

(O) Basset Hound Club Of Wales Earlswood Village Hall, Mrs CM Watkins, 01495 271101, blackveink9@gmail.com

Events

(O) Birmingham & District Fox Terrier Club

Bulkington Working Mens Club, Mrs LPJ England, 01366 328826, l.England@mypostoffice.co.uk

(O) **Borzo Club** Sports Connexion, Miss PA Harris, 01922 682191, theborzoiclub@ymail.com

(CH) **Bracco Italiano Club** Kennel Club Building at Stoneleigh Park, Miss D Beecham, 07817 225705, xxpumaxx@sky.com

(O) **Bridgwater & District Canine Society** Junction 24 Ltd, Mr J Titchener, davidjrolfe37@gmail.com

(O) **Chow Chow Club** Mr J Kirby, 01928 833916, jamesjkirby@yahoo.co.uk

(PO) **Herts & Essex Border Canine Society** Forest Edge Arena, Mr D Bedford, 01953 688251, celebrant897@outlook.com

(O) **Hound Association** Sports Connexion, Ms CL Boggia, 07912 038891, Boughtongreys@gmail.com

(O/AG) **Inspire Agility** Moreton Morrell College of Agriculture, Moreton, Morrell, Ms RA Abrahams, 07734 232613, ruthabrahams3@hotmail.com

(CH) **Kent, Surrey & Sussex Labrador Retriever Club** Lockmeadow Market, Maidstone, Kent, Mrs A Scutcher, 01255 871489, winsleywood@gmail.com

(O/AG) **KS Training** The Grange Equestrian Centre, Miss K Stickney, 07929 237921, kathrynstickney@btinternet.com

(O) **North West Border Collie Club** Whiston Town Hall, Miss TJ Irving, richardsonjean557@gmail.com

(CH) **Northern Bernese Mountain Dog Club** Thirsk Farmers Auction Market, Miss SA Corrigan, 01912 652686, shelagh59.bernese@yahoo.co.uk

(O) **Northern Counties Chow Chow Club** Denshaw Village Hall, Saddleworth, Lancashire, Miss AM Foy, 07919 145062, ann-marie2@virginmedia.com

(CH) **Nova Scotia Duck Tolling Retriever Club Of UK** Kennel Club Building at Stoneleigh Park, Mrs L Palfrey, 01884 34521, lpalfs@aol.com

(CH) **Pennines Bulldog Club** The Speedwell Rooms, Staveley, Nr Chesterfield, Mrs D Lees, 01754 820958, l44s@aol.com

(O) **Southern Counties Staffordshire Bull Terrier Society** Navestock Village Hall, Mr KJ Meneer, 01375 767103, scsbts1937@gmail.com

(CH) **Welsh Springer Spaniel Club Of South Wales** Forest Oak Farm, Mrs S Evans, 01495 271966, welshspringerspaniel.csw@gmail.com

(O) **Welsh Terrier Club** Polesworth Memorial Hall, Ms I Bennett, julien.barney@gmail.com

March 25

(CH/WT) **British Association For German Shepherd Dogs** Yew Tree Inn, Mrs EA Thorpe, 07445 801650, walsallbagsdvpvg@hotmail.co.uk

March 28

(O/AG) **Kelluki Agility** Ardingly Showground, West Sussex, Miss S Hatcher, 07920 405366, sjhatcher62@hotmail.com

(O/WT) **Yorkshire Working Trials Society** West Bretton Village Hall, Mrs S Rose, 01944 738513, sallyerose@msn.com

March 29

(O/AG) **Agility Vision** Darley Moor Sports Centre, Mrs A Bailey, 01522 693392, agilityvision.alex@gmail.com

(CH/OB) **Carmarthen Canine Society** Carmarthen Showground, Mrs L Dayman, 07515 167741, patchworkponies@hotmail.com

(O/AG) **Dog Days Agility** Bolesworth Castle, Tattenhall, Mr P Robinson, 07884 314675, philrobo@sky.com

(O) **East Anglian Gundog Society** Horse Creek Farm Arena, March, Cambridgeshire, Mr PW Osbourne, 07585 979022, paul.osbourne_braego@btinternet.com

(PO) **Edwinstowe & District Canine Society** Newark & Notts Showground, Winthorpe, Newark, Mrs E King, 01246 476059, euniceking2@talktalk.net

(CH) **Irish Wolfhound Club** The Kennel Club Building, Mrs D Treadwell, 07855 663697, irishwolfhoundclub.secretary@hotmail.com

(L) **Irish Wolfhound Club** The Kennel Club Building, Mrs D Treadwell, 07855 663697, irishwolfhoundclub.secretary@hotmail.com

(O/AG) **Kelluki Agility** Ardingly Showground, West Sussex, Miss S Hatcher, 07920 405366, sjhatcher62@hotmail.com

(P/AG) **Kernow Agility Club** Royal Cornwall Show Ground, Wadebridge, Mrs F Hildersley, 01208 831349, fran.hildersley@btinternet.com

(O/AG) **Longfield Agility** Newby Hall, Nr Ripon, Mr K Waddell, 07867 416067, longfieldagility@gmail.com

(CH) **Midland Rottweiler Club** The Kennel Club Building, Miss K Forster, 00 3536 976714, Megalmar.rots@gmail.com

(O/AG) **Phase Purple Agility Training** Dalston Green, Mrs F Nemeth, 07979 290579, fayeshetlandpony1@hotmail.co.uk

March 30

(O/AG) **Agility Vision** Darley Moor Sports Centre, Mrs A Bailey, 01522 693392, agilityvision.alex@gmail.com

(CH) **Border Terrier Club** H & H Exhibition Hall, Mrs K Wilkinson, 0191 371 9405, otterkin@aol.com

(O) **British Bolognese Club** Staffordshire County Showground, Miss A Summers, 07771 575665, adelesummers1@gmail.com

(O/OB) **Carmarthen Canine Society** Carmarthen Show Ground, Mrs L Dayman, 07515 167741, patchworkponies@hotmail.com

(CH) **Chinese Crested Dog Club** Staffordshire County Showground, Miss L Biss, 07970 887453, ankorsch@aol.com

(O) **Dandie Dinmont Terrier Club** Staffordshire County Showground, Mrs ML Taylor, 01524 419253, mt.ballarat@gmail.com

(O/AG) **Dog Days Agility** Bolesworth Castle, Tattenhall, Mr P Robinson, 07884 314675, philrobo@sky.com

(O) **English Toy Terrier (Black & Tan) Club** Bingley Hall, Stafford County Showground Ltd, Stafford, Mrs L Dixon, 07904 621665, secretary@english-toy-terrier-club.com

(CH) **Finnish Lapphund Club Of Great Britain** Stoneleigh Park, Mrs ER Short, 07545 655016, flcgb.secretary@gmail.com

(CH) **Griffon Bruxellois Breeders Association** Staffordshire County Showground, Miss JM Spittle, 01562 885870, juliagbba@gmail.com

(O) **Japanese Chin Club** Staffordshire County Showground, Mrs L Flynn, 01205 760374, thejapanesechinclubuk@gmail.com

(O/AG) **Kelluki Agility** Ardingly Showground, West Sussex, Miss S Hatcher, 07920 405366, sjhatcher62@hotmail.com

(P/AG) **Kernow Agility Club** Royal Cornwall Show Ground, Wadebridge, Mrs F Hildersley, 01208 831349, fran.hildersley@btinternet.com

(CH) **King Charles Spaniel Club** Staffordshire County Showground, Mrs ML Constable, 01904 448033, m.constable@live.co.uk

(O/AG) **Longfield Agility** Newby Hall, Nr Ripon, Mr K Waddell, 07867 416067, longfieldagility@gmail.com

(O) **Midland Counties Norfolk Terrier Association** Shenstone Village Hall, Mrs R Gee, 07985 569770, ruth.gee@hotmail.co.uk

(P/AG) **Norfolk Dog Training Society** The Norfolk Showground, Costessey, Mrs Carter, norfolkdogtrainingsociety@outlook.com

(CH) **Papillon (Butterfly Dog) Club** Staffordshire County Showground, Mrs C Headley, 02476 394257, chrisheadley70@gmail.com

(CH) **Papillon (Butterfly Dog) Club** Staffordshire County Showground, Mrs C Headley, 02476 394257, chrisheadley70@gmail.com

(O/AG) **Phase Purple Agility Training** Dalston Green, Mrs F Nemeth, 07979 290579, fayeshetlandpony1@hotmail.co.uk

(CH) **Schnauzer Club Of Great Britain** Sky Sports Connexion, Ryton On Dunsmore, Coventry, Mrs EE Kelly, 01245 357333, scgb@live.co.uk

(CH) **Scottish Breeds Canine Club** Royal Highland Showground, Ingliston, Edinburgh, Mr TH Johnston, 01461 800372, tomstjohn17@yahoo.com

(CH) **Solid Colours Cocker Spaniel Association** Kennel Club Building at Stoneleigh Park, Mrs M Lockwood, 01844761236, chimewood@sky.com

(O) **South Of England Airedale Terrier Club** Fairlands Community Centre, Mrs AW Haly, 01895 833875, bobbyhaly@yahoo.co.uk

(CH) **United Kingdom Toydog Society** Staffordshire County Showground, Mr TD Mather, 0151 486 3570, uktoydog@btinternet.com

(CH) **West Pennine Pug Dog Club** Staffordshire County Showground, Mrs L Mallinson, 07973 253497, lucy.c.hill@sky.com

March 31

(O/AG) **Agility Vision** Darley Moor Sports Centre, Mrs A Bailey, 01522 693392, agilityvision.alex@gmail.com

(O) **Australian Shepherd Club Of The United Kingdom** Edingale Village Hall, Mrs J Turnbull, 01388 766603, jean.jenkova@live.co.uk

(O) **Australian Terrier Club Of Great Britain** Brookfields Farm Riding & Livery Centre, Mr PE Bakewell, 01746 718133, ATCGB_Secretary@mail.com

(CH) **Cairn Terrier Club** Cochrane Hall, Mrs J Percy, 07800 634154, winetta@btinternet.com

(O) **Cairn Terrier Club** Cochrane Hall, Mrs J Percy, 07800 634154, winetta@btinternet.com

(CH/OB) **Carmarthen Canine Society** Carmarthen Showground, Mrs L Dayman, 07515 167741, patchworkponies@hotmail.com

(CH) **Chesapeake Bay Retriever Club** The Kennel Club Building, Mrs MA Barker, 07753 465569, cbrc.secretary@outlook.com

Events

(O) Chesapeake Bay Retriever Club Kennel Club Building at Stoneleigh Park, Mrs MA Barker, 07753 465569, cbrc.secretary@outlook.com

(O) Consett Canine Society Temple Park Leisure Centre, John Reid Rd, South Shields, Mrs L Chesterfield, lynneandcolinchesterfield@btinternet.com

(O/AG) Dog Days Agility Bolesworth Castle, Tattenhall, Mr P Robinson, 07884 314675, philrobo@sky.com

(L) Dovey Valley Canine Society Ciliau Aron Village Hall, Aberagron, Ceredigion, Mr J Bullock, 07773 329340, DVCS.secretary@gmail.com

(O) Eastern Counties Shetland Sheepdog Club Millennium Centre, Mrs M Gladding, 01799 542305, startoonie@gmail.com

(CH) English Setter Society Of Wales Shrewsbury Sports Village, Mrs K Stephenson, 01629 540608, steeplow@btinternet.com

(O) German Spitz Club of Great Britain Sports Connexion, Miss A Drechsler, 01159 282641, ann_drechsler@btinternet.com

(PO) Gundog Club Of North Wales Ruthin Livestock Market Parc, Mr R Perkins, 07500 292804, roger_p@hotmail.co.uk

(CH) Hungarian Wirehaired Vizsla Club of Great Britain The Kennel Club Building, Mrs S Mitchell, 01508 538520, suemitchellhwv@gmail.com

(O) Hungarian Wirehaired Vizsla Club of Great Britain The Kennel Club Building, Mrs S Mitchell, 01508 538520, suemitchellhwv@gmail.com

(O) Junior Bulldog Club Fairlands Community Centre, Mrs L Handley, 01902 418499, juniorbulldogclub@mail.com

(O/AG) Kelluki Agility Ardingly Showground, West Sussex, Miss S Hatcher, 07920 405366, sjhatcher62@hotmail.com

(P/AG) Kernow Agility Club Royal Cornwall Show Ground, Wadebridge, Mrs F Hildersley, 01208 831349, fran.hildersley@btinternet.com

(O/AG) Longfield Agility Newby Hall, Nr Ripon, Mr K Waddell, 07867 416067, longfieldagility@gmail.com

(O) Midland & Northern Counties French Bulldog Club Peace Memorial Hall, Mr D Spencer, honsecmncfbc@gmail.com

(O) Miniature Bull Terrier Club Kegworth Village Hall, Nottingham Road, Kegworth, Derbyshire, Mrs W Whittaker, 01282 429569, Wengor@ntlworld.com

(P/AG) Norfolk Dog Training Society The Norfolk Showground, Costessey, Mrs Carter, norfolkdogtrainingsociety@outlook.com

(CH) Northern Samoyed Society Thorpe Willoughby Village Hall, Mr GJ Smith, 01922 492053, gjsmith23@hotmail.co.uk

(O) Notts & Derby District Staffordshire Bull Terrier Club Shirland Village Hall, Alfreton, Derbys, Ms HE Reaney, 07792 558272, rolenskasbt@gmail.com

(O/AG) Phase Purple Agility Training Dalston Green, Mrs F Nemeth, 07979 290579, fayeshetlandpony1@hotmail.co.uk

(CH) Pomeranian Club Weston Hall Hotel, Weston Road, Bulkington, Nr Coventry, Mrs JA Pike, thepomeranianclub@hotmail.co.uk

(O) Schipperke Club Nether Whitacre Village Hall, Coleshill, Warwicks, Mrs MK Reed-Peck, 01638 668664, byquy@tiscali.co.uk

(O) South Of England Gundog Club Lockmeadow Market, Baker Road, Maidstone, Kent, Ms Daniela Pinto Tranquada, 07545 190392, armeiro@ntlworld.com

(CH) Wirehaired Dachshund Club Sky Sports Connexion, Ryton On Dunsmore, Coventry, Mrs A Moore, 01283 224207, romanchiwires@aol.com

(AG) – Agility, (CH) – Championships, (FL) – Flyball, (HTM) – Heelwork to Music, (L) – Limited Show, (O) – Open Show, (OB) – Obedience, (PA) – Premier Agility, (PO) – Premier Open Show, (R) – Rally, (WT) – Working Trial Show
This information is correct as of 6th December 2023. If you would like to attend any of these events, please contact the Secretary for further details. Licensed by The Kennel Club.



THE KENNEL CLUB
ASSURED BREEDERS

Find a puppy with the Assured Breeders scheme

Owners who buy from a Kennel Club assured breeder spend nearly 20% less in vet bills* compared to those who buy a dog elsewhere.



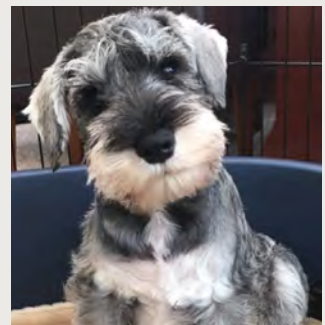
“Our dog is the light in our lives. Would always recommend a Kennel Club assured breeder.”



“I love my dog because this little bundle of fluff is the best thing that ever happened to us.”



“I love my dog because of the way he looks at me, his playful nature and his unconditional love!”



“I love my dog because she is my devoted best friend.”

For a healthy, happy puppy always buy from a Kennel Club assured breeder and do your part to help put puppy farmers out of business.

For more information visit [thekennelclub.org.uk/search/find-a-puppy](https://www.thekennelclub.org.uk/search/find-a-puppy)

*Stats provided by Agria pet insurance.



THE KENNEL CLUB

The Emblehope & Burngrange Estate Northumberland

A Centre of Excellence for Working Dogs

This beautiful moorland estate stretches to some 7,550 acres and is absolutely ideal for walked up trialling and training for Retrievers, Spaniels and HPRs. The estate offers both Pheasant and Partridge shooting and the varied terrain offers opportunities for all breeds of Gundog to demonstrate their natural working abilities. Woodland cover provides excellent hunting for Spaniels whilst the stretching moorland is ideal for challenging retrieves and for the pointing breeds to show off their hunting abilities to the full.

As a Centre of Excellence for Working Dogs, the Estate also welcomes the full range of working dog activities including:

- Field Trials including Pointer and Setter Spring Stakes
- Gundog Working Tests
- Gundog Training Days
- Live Game Training Days
- Pointing Tests
- Working Trials
- Bloodhound Trials
- Activity Training Days
- Shooting and Gundog Activities



Book your training activities with the Emblehope Estate:
thekennelclub.org.uk/emblehope | emblehope@thekennelclub.org.uk
01296 318 540 ext 290

Field Trials

The Emblehope & Burngrange Estate Northumberland

A Centre of Excellence for Working Dogs

This beautiful moorland estate stretches to some 7,550 acres and is ideal for walked up trialling and training for Retrievers, Spaniels and HPRs. The estate offers Pheasant and Partridge shooting and the varied terrain offers opportunities for all breeds of Gundog to demonstrate their natural working abilities.

Book your training activities with the Emblehope Estate:
thekennelclub.org.uk/emblehope | emblehope@thekennelclub.org.uk
 01296 318540 ext 290



JANUARY

JANUARY 2

Utility Gundog Society Open AV Spaniel (Excluding Spaniel [Cocker]) Stake, Shotesham Park, Mr JC Keegan, 07976 437465, john@geordielandgundogs.co.uk

JANUARY 3

Hampshire Gundog Society Open (Any Variety Hunt, Point and Retrieve) Stake, Upper Helmsley, Mrs H Gray, 07879 818016, heather.gray@talktalk.net

Meon Valley Working Spaniel Club Novice (AV Spaniel) Stake, Clarendon Park, Mrs CC Bridgwater, 01962 793152, chris@scherzando.co.uk

JANUARY 4

Leicestershire Gundog Society Novice (AV Retriever) Stake, Creeton Shoot, Mr H Vilendal, 07952 907867, vilendal@yahoo.com

JANUARY 5

Lothian & Borders Gundog Association All Aged (AV HPR) Stake, Emblehope and Burngrange Estate, Mr RC Hall, 01821 650602, robinhall321@live.co.uk

JANUARY 5-6

Kennel Club Ltd Cocker Spaniel Championship, Emblehope and Burngrange Estate, Miss K Broers, 020 7518 1059, ftsecretary@thekennelclub.org.uk

JANUARY 6

West Dartmoor Working Gundog Club Open (Any Variety Retriever) Stake, Lyneham Estate, Ms ZA Churchward, 01769 551840, zchurchward@hotmail.com

JANUARY 8

Isle Of Wight Gundog Club Open (Any Variety Retriever) Stake, Newbarn Farm, Mrs W Perera, 07815 016587, wendy.perera@btinternet.com

Mid Sussex Working Spaniel Club Novice AV Spaniel (Excluding Spaniel [Cocker]) Stake, Knowle Farm, Sevenoaks, Mrs D Robertson, 07772 302321, Ftsecretarymswsc@gmail.com

Utility Gundog Society Novice (Any Variety Retriever) Stake, Ampton Estate, Mrs VA Easey, 07776 146181, verityeasey@gmail.com

JANUARY 9

Duchy Working Gundog Club Novice (Any Variety Spaniel) Stake, Upton Pyne Estate, Mrs AS Wise, 07970 683266, info@dwgc.org.uk

Dukeries [Notts] Gundog Club All Aged (AV Retriever) Stake, Wentworth Park, Mrs C Gretton, 01724 710265, dukeriesclub@aol.com

Eastern Counties Spaniel Society All Aged (Any Variety Spaniel) Stake, Shotesham Park, Mrs WE Knight, 01206 251426, abbeyoaks.gundogs2@gmail.com

Usk Valley Working Gundog Club Novice (Cocker Spaniel) Stake, Leadon Court, Mrs D Bird, 01495 757262, uvchairman@outlook.com

Worcestershire Gundog Society Novice (AV HPR) Stake, Somerford Hall, Stretton, Mr LE Birch, 07545 573898, lloyd.birch1@googlemail.com

JANUARY 12

German Longhaired Pointer Club All Aged (AV HPR) Stake, Emblehope and Burngrange Estate, Mrs C Kimberley, 01837 682672, enquiries@kimberleygundogs.com

North Devon Working Gundog Club Novice (AV Spaniel) Stake, Upton Pyne Estate, Mrs V Brookes, 07932 159978, brookesnv@gmail.com

Weimaraner Club Of Great Britain Novice (AV HPR) Stake, Spanyards Farm, Ms SE Burton, 01825 508552, suzi.b@talktalk.net

Worcestershire Gundog Society Open (AV HPR) Stake, Loddington Hall, Mr LE Birch, 07545 573898, lloyd.birch1@googlemail.com

JANUARY 13

Dove Valley Working Gundog Club Novice (Cocker Spaniel) Stake, Bretby Shoot, Burton-Upon-Trent, Mr R Seaman, bobseaman@mac.com

Eastern Counties Spaniel Society Novice (AV Spaniel) Stake, Wherstead, Mrs WE Knight, 01206 251426, abbeyoaks.gundogs2@gmail.com

Hungarian Vizsla Society All Aged (AV HPR) Stake, Emblehope and Burngrange Estate, Mr J Reavil, 07545 476381, hvsfieldtrialsecretary@gmail.com

Kent Working Spaniel Club Novice (AV Spaniel) Stake, Beluncle Farm, Hoo, Mr R Hyde, 01795 476432, hydeelaine@hotmail.com

JANUARY 15

Cambridgeshire Field Trial Society Novice (Any Variety Retriever) Stake, Audley End Estate, Mrs S Stonebridge, 01223 872451, owlstone@btinternet.com

Chiltern Gundog Society Novice (Cocker Spaniel) Stake, Portman Estate, Mr LD Wingfield, 07763 110944, l.wingfield@aol.co.uk

East Midland Gundog Club Novice (AV Retriever) Stake, Stapleford Park, Miss H Swan, 07792 457506, helenswan01@btinternet.com

German Longhaired Pointer Club All Aged (AV HPR) Stake, Ditchley Estate, Enstone, Mrs C Kimberley, 01837 682672, enquiries@kimberleygundogs.com

Wye Valley Retriever Club Open (AV Retriever) Stake, Batsford Estate, Mrs A Crampton, 07976 842245, anna@cleirwy.co.uk

JANUARY 15-17

Kennel Club Ltd AV Spaniel (Excluding Spaniel [Cocker]) Championship Stake, Tollishill & Burncastle, Miss K Broers, 020 7518 1059, ftsecretary@thekennelclub.org.uk

JANUARY 16

Dukeries [Notts] Gundog Club Novice (AV Spaniel) Stake, Wentworth Park, Mrs C Gretton, 01724 710265, dukeriesclub@aol.com

German Wirehaired Pointer Club All Aged (AV HPR) Stake, Summerford Hall, Mrs M Hewins, 07775 556723, mehewins@gmail.com

Kintbury Gundog Club Novice (Any Variety Spaniel) Stake, East Gunley, Chippenham, Mrs JE Bearman, 01635 860253, junebearman@hotmail.com

JANUARY 17

Chiltern Gundog Society Novice (Any Variety Spaniel) Stake, Tusmore Estate, Mr LD Wingfield, 07763 110944, l.wingfield@aol.co.uk

Fermanagh Gundog Club All Aged (Any Variety Spaniel) Stake, Gortin, Mr P McKearney, 07713 104998, peter@pmkelectrical.com

Norfolk Gundog Club Novice (Any Variety Retriever) Stake, Westwick Hall, Norwich, Mr PR Abbs, 07930 036491, petera2001uk@yahoo.co.uk

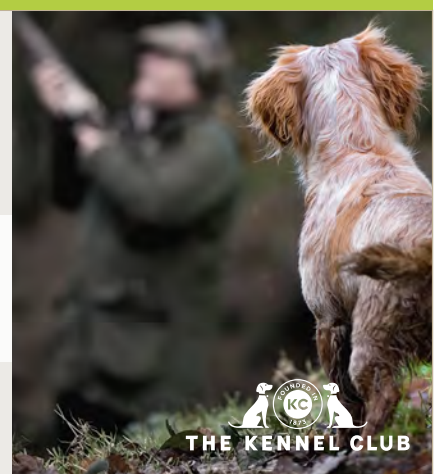
Field Trials

The Emblehope & Burngrange Estate Northumberland

A Centre of Excellence for Working Dogs

This beautiful moorland estate stretches to some 7,550 acres and is ideal for walked up trialling and training for Retrievers, Spaniels and HPRs. The estate offers Pheasant and Partridge shooting and the varied terrain offers opportunities for all breeds of Gundog to demonstrate their natural working abilities.

Book your training activities with the Emblehope Estate:
thekennelclub.org.uk/emblehope | emblehope@thekennelclub.org.uk
 01296 318540 ext 290



Shropshire & Staffordshire Working Spaniel Society Novice (Any Variety Spaniel) Stake, Wood Shoot, Coldsall, Mr PG Leeke, 01743 709447, paul_leeke@hotmail.co.uk

JANUARY 20

Fermanagh Gundog Club Novice (Any Variety Retriever) Stake, Murley Mountain, Fivemiletown, Miss S Neogard, 035 3877 833698, sara.neogard@europe.com

Gwynedd Spaniel Club Novice (Any Variety Spaniel) Stake, Wentworth Park, Rotherham, Miss A Hayes, 07557 444790, al.hayes@hotmail.co.uk

Hampshire Gundog Society Open (AV Retriever) Stake, West Tisted Manor Estate, Miss P Graystone, 07966 971519, paula@wpcc.org.uk

Large Munsterlander Club All Aged (AV HPR) Stake, Flimwell House Farm, Flimwell, Mrs HJ Evans, 07745 773396, helenevans0710@gmail.com

JANUARY 22

Cambridgeshire Field Trial Society Novice (AV Spaniel) Stake, Audley End Estate, Mrs S Stonebridge, 01223 872451, owlstone@btinternet.com

Dorset Working Spaniel Club Novice (Cocker Spaniel) Stake, Grittleton, Mr MR Ashman, martin_ashman@btinternet.com

East Midland Gundog Club Novice (Cocker Spaniel) Stake, Bretby Shoot, Ms V West, 07925 877051, victoria.west@moypark.com

JANUARY 23

Labrador Retriever Club Of Northern Ireland Novice (Any Variety Retriever) Stake, Copeland Islands, Mr R Johnston, 02844 320123, LRCNI@outlook.com

Utility Gundog Society Novice (Any Variety Spaniel) Stake, Shotesham Park, Mr JC Keegan, 07976 437465, john@geordielandgundogs.co.uk

JANUARY 24

Hunt, Point & Retrieve Gundog Association Novice (AV HPR) Stake, Haverholme, Sleaford, Mrs Ruth Webster, 01928 735249, rew.webster@icloud.com

Lothian & Borders Gundog Association Novice (Any Variety Retriever) Stake, Hirsell Estate, Coldstream, Mr A Kennedy, 07739 414761, lbgasec@gmail.com

Yorkshire Gundog Club Novice (AV Spaniel) Stake, Thimbleby Estate, Miss S Higgins, 07793 189280, sarah_higgins_123@hotmail.co.uk

JANUARY 25

English Springer Spaniel Club Of Northern Ireland All Aged (Any Variety Spaniel) Stake, Copeland Islands, Mr T Houston, 07710 620780, themhouston@hotmail.com

Hungarian Wirehaired Vizsla Association Novice (AV HPR) Stake, Haverholme, Sleaford, Ms D Revell, 01460 234147, flatcatco@yahoo.co.uk

JANUARY 26

Barton On Humber Gundog Club Novice (Any Variety Retriever) Stake, Elsham Estate, Mrs HM Smith, 01472 870273, secretary@bohgc.co.uk

Italian Spinone Club Of Great Britain Novice (AV HPR) Stake, Little Pixhall Farm, Mrs AC Johnson, 01264 781913, 3girlsandtrev@lineone.net

JANUARY 27

Gwynedd Spaniel Club Novice (Cocker Spaniel) Stake, Gunnerside Estate, Miss A Hayes, 07557 444790, al.hayes@hotmail.co.uk

Hampshire Gundog Society Novice (AV HPR) Stake, Flimwell Home Farm, Flimwell, Mrs H Gray, 07879 818016, heather.gray@talktalk.net

JANUARY 29

Hungarian Vizsla Society Novice (AV HPR) Stake, North Lodge Farm, Mr J Reavil, 07545 476381, hvstrialsecretary@gmail.com

North Devon Working Gundog Club Novice (AV Retriever) Stake, Great Fulford Estate, Mrs BJ Payne, 07717 302069, bethjpayne@gmail.com

JANUARY 29-30

West Midland Field Trials Society Open (Any Variety Retriever) Stake, Tregynon, Newtown, Mrs C Starkey, westmidlandfieldtrialsociety@gmail.com

JANUARY 30

Dove Valley Working Gundog Club Novice (Any Variety Spaniel) Stake, Cubleby Estate, Mr R Seaman, bobseaman@mac.com

South Eastern Gundog Society Novice (Any Variety Retriever) Stake, Wivelsden Farm, Mrs M Smith, 07754 838321, smithorchardfarm@tiscali.co.uk

This information is correct as of 11th December 2023. If you would like to attend any of these events, please contact the Secretary for further details. Licensed by the Kennel Club.

Subscribe to the Kennel Gazette from £25 a year

To find out more about becoming an affiliate member or to purchase, visit:
thekennelclub.org.uk/shop/memberships/kennel-club-affiliates/

Seminar Diaries

Kennel Club Seminars

	DATE		TRAINER	VENUE ADDRESS	CONTACT
JANUARY 2024	6th-7th	Agility (Practical)	Accredited Trainer, Hannah Grantham	Butterton Grange K9 Centre, ST5 4DY	Hannah Granthan, 07865 660552
	14th	HTM (R&R)	Accredited Trainer, Gina Pink	Hounslow Community Centre, Hounslow Avenue, Totton, Southampton SO40 9FG	Dog Kind Training Jan Debnam, 07907 304571 training@dogkind.co.uk
	27th	Conformation and Movement	Accredited Trainer, David Alcorn	Kirtling Village Hall, Newmarket CB8 9PB	Ricky Furnell, 07800 575421 bebecova@outlook.com
	27th	Points of a Dog	Accredited Trainer, David Alcorn	Kirtling Village Hall, Newmarket CB8 9PB	Ricky Furnell, 07800 575421 bebecova@outlook.com
FEBRUARY 2024	3rd	HTM (Competition Organisers Seminar)	Accredited Trainer, Gina Pink	Via Zoom	Gina Pink, 07807 770969 busydogs@icloud.com
	4th	Requirements of a Field Trial Judge - Retriever	Accredited Trainer, Peter Bates	Arkendale Community Hall, Moor Lane, Arkendale, Knaresborough HG5 0RF	Three Ridings Gundog Club Liz Robinson, 07534 711958 liz.robinson296@gmail.com
	10th	Requirements of a Dog Show Judge	Accredited Trainer, Christina Chapman	Walford Village Hall, Walford Road, Walford, Ross on Wye HR9 5QS	Wye Ringcraft Linda Thomas, 07951 059778 Linda@shimani.org.uk
	10th	HTM (Competition Organisers Seminar)	Accredited Trainer, Kath Hardman	Online	Kath Hardman kath.hardman@btinternet.com
	17th	Conformation and Movement	Accredited Trainer, Hector Heathcote & Sue Finnett	Chiddingly Village Hall, Chiddingly, East Sussex BN8 6HE	The Lancashire Heeler Association Debbie Felstead, 07759 261670 felstead3@hotmail.com
	17th	Requirements of a Field Trial Judge - Retriever	Accredited Trainer, Steven Crookes	South Yorkshire Police S.S.C, Niagara Lane, Sheffield S6 1LU	Northern Golden Retriever Association Steven Crookes, 07801 343261 crookes.moscargranger@gmail.com
	25th	Conformation and Movement	Accredited Trainer, Kathy Moores	Cucklington Village Hall, Rowls, Cucklington, Wincanton BA9 9PZ	North Dorset Ringcraft Club Maura Kiely, 07921 553815 NorthDorsetRC@gmail.com
MARCH 2024	25th	Points of a Dog	Accredited Trainer, Kathy Moores	Cucklington Village Hall, Rowls, Cucklington, Wincanton BA9 9PZ	North Dorset Ringcraft Club Maura Kiely, 07921 553815 NorthDorsetRC@gmail.com
	16th	Points of a Dog	Accredited Trainer, Christina Chapman	Theadley Village Hall, Arford Road, Headley Hampshire GU35 8LJ	Headley Ringcraft Association Samantha Lewis, 01428 741479 headleyringcraft@gmail.com
	16th	Conformation and Movement	Accredited Trainer, Christina Chapman	Theadley Village Hall, Arford Road, Headley Hampshire GU35 8LJ	Headley Ringcraft Association Samantha Lewis, 01428 741479 headleyringcraft@gmail.com
	23rd-24th	Agility (Practical)	Accredited Trainer, Amy Gandy	White Owl Farm, Hundreds Road, Crowland, Peterborough PE6 0LG	Amy Gandy, 07977 128392 ampawsome@outlook.com
	24th	Points of a Dog	Accredited Trainer, Christina Chapman	Baginton Village Hall, Frances Road, Baginton, Warks CV8 3AB	Smooth Collie Club of Great Britain Cathy Howard, 01406 351496 roughcollie@sky.com
24th	Conformation and Movement	Accredited Trainer, Christina Chapman	Baginton Village Hall, Frances Road, Baginton, Warks CV8 3AB	Smooth Collie Club of Great Britain Cathy Howard, 01406 351496 roughcollie@sky.com	

To discuss your seminar requirements for:

• Requirements of a Dog Show Judge (Show) • Conformation and Movement (Show) • 'Points of the Dog' Assessment • Ring Stewarding
please email judges.seminars@thekennelclub.org.uk or telephone 01296 318540.

• Field Trials, Agility, Bloodhound Trials, Heelwork to Music, Obedience and Working Trials
please email judges.seminars@thekennelclub.org.uk or telephone 01296 318540

Seminar Diaries

Breed Appreciation Days

	DATE	BREED	BREED SPEAKER	VENUE ADDRESS	CONTACT
JANUARY 2024	14th	Gordon Setter	Jean Collins-Pitman	Online Platform	British Gordon Setter Club James Newton, 07305 811924 james.patamoke@gmail.com
	14th	Collie (Rough)	Gwen Beaden	East Huntspill Village Hall, Church Road, East Huntspill, Nr Highbridge, Somerset TA9 3PG	West of England Collie Society Joanne Denton/Sheila Beeney, 07557 646056 jodenton90@gmail.com
	16th	Spaniel (English Springer)	Yvonne Billows and Lesley Field	Online Platform	English Springer Spaniel Club, ESSC of Scotland, ESSC of Wales and South Western ESSC Kath Holt, 07872 136624 holtkath@gmail.com
	21st	Dachshund (Wire Haired)	Ruth Lockett-Walters	Calf Heath Village Hall, Straight Mile, Calfheath, Wolverhampton WV10 7DW	Midland Dachshund Club Andrew Whitfield-Roberts, 01785 664461 Dandydayo40@gmail.com
FEBRUARY 2024	3rd	King Charles Spaniel	Frank Kane & Andreas Schemel	Baginton Village Hall, Francis Road, Baginton, Coventry CV8 3AB	King Charles Spaniel Club Mrs M Constable, 01904 448033 m.constable@live.co.uk
	4th	Papillon	Caroline Lee-Slater	Baginton Village Hall, Francis Road, Baginton, Coventry CV8 3AB	Papillon (Butterfly Dog) Club Christine Headley, 07990 962150 chrishheadley70@gmail.com
	9th	Bullmastiff	Billy Brittle	Holiday Inn Runcorn, Wood Lane, Beechwood, Runcorn WA7 3HA	Bullmastiff Breed Council Billy Brittle, 07961 054856 billybrittle@aol.com
	10th	English Toy Terrier (Black & Tan)	Nick Gourley	The Speedwell Rooms, Inkersall Road, Staveley, Chesterfield, Derbyshire S43 3JL	English Toy Terrier (B&T) Club Derfel Owen, 07540 843492 derfelowen@yahoo.co.uk
	11th	Lagotto Romagnolo	Louise Mizen Ferguson	Stoneleigh Village Hall, Hall Cl, Stoneleigh, Coventry CV8 3DG	Lagotto Romagnolo Club of Great Britain Kath Bransby, 07946 174868 kath_bransby@yahoo.co.uk
	11th	Portuguese Water Dog	Rachel Redding	Bishops Frome Village Centre, Bishop Frome, Hereford WR6 5AR	Portuguese Water Dog Club of Great Britain Jayne Hopkins, 07855 625269 jaynehopkins@me.com
	11th	Pointer	Matt Oddie, Meryl Asbury, Riannelis R and Carolyn O'Neill	Mappleborough Green Village Hall, Studley B80 7BT	Pointer Club Carolyn O'Neill, 07881 687055 carolyn.themews@talktalk.net
	11th	Samoyed	Penny Roberts	Swannington Village Hall, Main Street, Swannington, Coalville LE67 8QL	Samoyed Breed Council Sue Smith, 01388 731010 sueburt12@btinternet.com
	17th	Tibetan Spaniel	Tony Moran	Online	South East & East Anglian Tibetan Spaniel Society Sarah Styles, 07825 805333 hilibreeze.16@gmail.com
	17th	Spaniel (Cocker)	David Shields	East Calder Partnership Centre, 139 Main Street, East Calder, Livingston EH53 0EP	Cocker Spaniel Club of Scotland & East of Scotland Cocker Spaniel Club Pamela Halkett, 07736 931124 education.scottishcocker@gmail.com
18th	Dachshund	Ruth Lockett Walters and Daniel Roberts	Earlswood Hall, Earlswood Road, Nr. Shirenewton, Chepstow NP16 6AW	The Dachshund Club of Wales Judith Armstrong, 01639 770028 dachshundclubofwales@gmail.com	
24th	French Bulldog	Paul Harding and Ann Wildman	Whiston Town Hall, Old Colliery Road, Whiston L35 3QX	West Lancs French Bulldog Club Ann Wildman, 07871 644863 annwildman10@hotmail.com	

Seminar Diaries

Breed Appreciation Days

	DATE	BREED	BREED SPEAKER	VENUE ADDRESS	CONTACT
MARCH 2024	16th	Irish Setter	Christine Morgan	Kirtling Village Hall, The Street, Newmarket CB8 9PB	Irish Setter Association, England & The Irish Setter Breeders Club Tania Gardner and Adrienne Callister tania.isae@yahoo.com adrienne.callister@gmail.com 07891 039310 / 01642 877676 / 07905 541428
	23rd	Bouvier des Flandres	Cheryl Pierpoint	Kirtling Village Hall, The St, Kirtling, Newmarket CB8 9PB	Bouvier des Flandres Club of GB Cheryl Pierpoint, 07484 217819 judges.bdfcofcb@gmail.com
	24th	Shih Tzu	Glenys Dolphin	Napton On The Hill, The Crescent, Napton On The Hill, Southam CV47 8LS	Manchu Shih Tzu Society Dorothy McIntyre, 07812 839621 dmassoc1@aol.com
	24th	Bullmastiff	Barry Blunden	Calf Heath Village Hall, Straight Mile, Calfheath, Wolverhampton WV10 7DW	Bullmastiff Association and Wales & West of England Bullmastiff Society Richard Aston, 07971 554974 eternalpride@hotmail.com
	24th	Keeshond	Colin Barton	Thorpe Willoughby Village Hall, Thorpe Willoughby, Selby YO8 9PA	North of England Keeshond Club Allison Stephenson showsecretary.noekc@gmail.com
	24th	Weimaraner	Patsy Hollings	Pool-in-Wharfedale Village Hall, Arthington Lane, Pool-in-Wharfedale, Otley, West Yorkshire LS21 1LG	North of England Weimaraner Society, Weimaraner Club of Great Britain, Weimaraner Association Claire Rodgers, 07919 401958 clairerodgers78@gmail.com
APRIL 2024	6th	Collie (Rough)	Hannah Walder	Edingale Village Hall, 7 Moores Croft, Edingale, Tamworth B79 9LJ	Collie Club of Wales/Midland Collie Club Mrs C Collins/Mrs H Walder, 01656 728256 christine@triburle.com
	7th	Spaniel (Cocker)	Joanna Darby	Great Barford Village Hall, Fishers Close, Great Barford, Bedford MK44 3HA	Home Counties Cocker Spaniel Club and Hampshire & Sussex Cocker Spaniel Club Elaine Thomas, 01664 567640 elaine@claramand-cockers.co.uk
	7th	Poodle	Michael Gadsby, Tom Isherwood & Melanie Harwood	Middlebie Community Centre, Middlebie, Lockerbie, Dumfries DG11 3JW	Poodle Club of Scotland Fiona Swan poodleclubofscotland@outlook.com
	11th	Pug	Lady A Ellis	Online Platform	Northern Pug Dog Club Mr R Lemon, 01709 522815 richard.lemon@hotmail.com
14th	Spaniel (American Cocker)	TBC	Polesworth Memorial Hall, 20 Bridge St, Polesworth, Tamworth B78 1DT	American Cocker Spaniel Club of Great Britain Linda Reed, 01455 848919 linda@delindere.f9.co.uk	
MAY 2024	19th	Russian Toy	Amanda Orchard	East Whitburn Community Centre, Hens Nest Road, East Whitburn, Bathgate EH47 8EX	Russian Toy Club UK and Scottish Toydog Society Claire Russell, 07929 003384 markrcraire@aol.com
	26th	Lancashire Heeler	Jackie Cutler & Debbie Felstead	Bearley Village Hall, Stratford-upon-Avon CV37 OSR	Lancashire Heeler Association Jacky Cutler, 07771 743138 jacky.lankeela@btinternet.com

Seminar Diaries

Breed Appreciation Days

	DATE	BREED	BREED SPEAKER	VENUE ADDRESS	CONTACT
OCTOBER 2024	6th	Spaniel (Cocker)	Michael Masters	Mathern Village Hall, Mathern, Nr Chepstow NP16 6JH	Devon and Cornwall Cocker Club, South Wales and Mon Cocker Club and West of England Cocker Spaniel Club Bryan J McCabe-Bell, 07305 178221 bryanmccabebell@gmail.com
	20th	Dalmatian	John Stevenson	Roads Village Hall, Bailey Brooks Lane, Road, Northamptonshire NN7 2LS	British Dalmatian Club Mrs Julie Hopkin, 07974 303391 secretary@britishdalmatianclub.org.uk
NOVEMBER 2024	2nd	Portuguese Podengo	Gabriela Veiga	Yelvertoft Village Hall, Stanford Road, Yelvertoft NN6 6LJ	Northern Portuguese Podengo Association Rob Dunning, 07539 514865 Anjuskar@outlook.com
	16th	Pug	Karen Murphy & Sue Lee	Nether Whitacre Village Hall, Station Rd, Nether Whitacre, Birmingham B46 2EH	Wales & West of England Pug Dog Club Karen Murphy, 07808 857177 kazmurph@hotmail.com
	17th	Spaniel (Field)	TBC	Bearley Village Hall, Snitterfield Road, Bearley, Stratford Upon Avon CV37 0SR	Field Spaniel Society Jill Holgate, 01282 865705 fieldspansec@gmail.com
FEB '25	23rd	Tibetan Spaniel	Tony Moran	Parkside Hall, Woburn Street, Amptill, Bedford MK45 2HX	South East and East Anglian Tibetan Spaniel Society Hilary Breeze, 07825 805333 hilibreeze.16@gmail.com



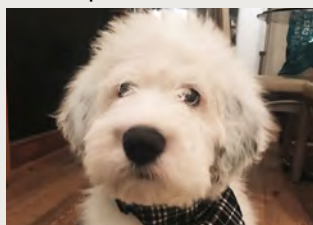
THE KENNEL CLUB
ASSURED BREEDERS

Find a puppy with the Assured Breeders scheme

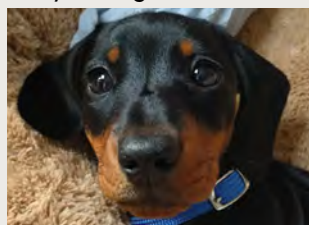
Owners who buy from a Kennel Club assured breeder spend nearly 20% less in vet bills* compared to those who buy a dog elsewhere.



“Our dog is the light in our lives. Would always recommend a Kennel Club assured breeder.”



“I love my dog because this little bundle of fluff is the best thing that ever happened to us.”



“I love my dog because of the way he looks at me, his playful nature and his unconditional love!”



“I love my dog because she is my devoted best friend.”

For a healthy, happy puppy always buy from a Kennel Club assured breeder and do your part to help put puppy farmers out of business.

For more information visit [thekennelclub.org.uk/search/find-a-puppy](https://www.thekennelclub.org.uk/search/find-a-puppy)

*Stats provided by Agria pet insurance.

Health Surveys

BREED AND AIM OF SURVEY	FURTHER INFORMATION
<p>AMERICAN COCKER SPANIEL To look at the overall health of the American Cocker Spaniel and collect information that will help improve knowledge on prevalence of any existing conditions and identify any potential emerging issues, in order to improve the breed's health and welfare for future generations.</p>	<p>Click here for the survey</p> <p>For further information please contact: adeva@hotmail.co.uk</p>
<p>BAVARIAN MOUNTAIN HOUND To look at the overall health of Bavarian Mountain Hounds in the UK and collect information that will help improve our knowledge on the prevalence of any existing conditions and identify any potential emerging issues, in order to improve the breed's health and welfare for future generations.</p>	<p>Click here for the survey</p> <p>For further information please contact: health@thekennelclub.org.uk</p>
<p>BLOODHOUND To look at the overall health of the Bloodhound and collect information that will help improve our knowledge on the prevalence of any existing conditions and identify any potential emerging issues, in order to improve the breed's health and welfare for future generations.</p>	<p>Click here for the survey</p> <p>For further information please contact: health@thekennelclub.org.uk</p>
<p>BOXER To collect information that will help improve our knowledge on what the breeding community would like to see if we were to develop a Kennel Club/Veterinary Cardiology Society (VCS) heart scheme, and ensure the scheme is suitable for all breeders. This health survey is open to all breeders (or prospective breeders) of Boxers.</p>	<p>Click here for the survey</p> <p>For further information please contact: health@thekennelclub.org.uk</p>
<p>BRACCO ITALIANO To look at the overall health of the Bracco Italiano and collect information that will help improve our knowledge on the prevalence of any existing conditions and identify any potential emerging issues, in order to improve the breed's health and welfare for future generations.</p>	<p>Click here for the survey</p> <p>For further information please contact: health@thekennelclub.org.uk</p>
<p>CIRNECO DELL'ETNA To look at the overall health of the Cirneco dell'Etna and collect information to improve our knowledge on the prevalence of any existing conditions and identify any potential emerging conditions, in order to improve the breed's health and welfare for future generations.</p>	<p>Click here for the survey</p> <p>For further information please contact: hillyercaroline@gmail.com</p>
<p>DACHSHUND (ALL VARIETIES) To continually monitor the overall health of the Dachshund varieties and collect information that will help improve knowledge on prevalence of any existing conditions and identify any potential emerging issues, in order to improve the breed's health and welfare for future generations.</p>	<p>Click here for the survey</p> <p>For further information please contact: info@dachshundhealth.org.uk</p>
<p>ENTLEBUCHER MOUNTAIN DOG To look at the overall health, wellbeing and behaviour of UK Entlebucher Mountain Dogs.</p>	<p>Click here for the survey</p> <p>For further information please contact: chairman@entlebucher.co.uk</p>
<p>FIELD SPANIEL To look at the overall health of the Field Spaniel and collect information to improve our knowledge on the prevalence of any existing conditions and identify any potential emerging conditions, in order to improve the breed's health and welfare for future generations.</p>	<p>Click here for the survey</p> <p>For further information please contact: health@thekennelclub.org.uk</p>
<p>FINNISH LAPPHUND To look at the overall health of the Finnish Lapphund and collect information to improve our knowledge on the prevalence of any existing conditions and identify any potential emerging conditions, in order to improve the breed's health and welfare for future generations.</p>	<p>Click here for the survey</p> <p>For further information please contact: health@thekennelclub.org.uk</p>
<p>FLAT COATED RETRIEVER To record data about the causes of death in the Flat Coated Retriever.</p>	<p>Click here for the survey</p> <p>For further information please contact a member of the Society Health Sub Committee, contact details available here</p>
<p>HAVANESE To continually monitor the overall health of the Havanese and collect information that will help improve knowledge on prevalence of any existing conditions and identify any potential emerging issues, in order to improve the breed's health and welfare for future generations.</p>	<p>Click here for the survey</p> <p>For further information please contact: akkad@doctors.org.uk</p>
<p>HAVANESE This survey aims to help us understand factors affecting longevity and causes of death in the breed.</p>	<p>Click here for the survey</p> <p>For further information please contact: akkad@doctors.org.uk</p>

Health Surveys

BREED AND AIM OF SURVEY	FURTHER INFORMATION
<p>HUNGARIAN WIRE HAired VIZSLA To continually monitor the overall health of the Hungarian Wire Haired Vizsla and collect information that will help improve our knowledge on the prevalence of any existing conditions and identify any potential emerging issues, in order to improve the breed's health and welfare for future generations.</p>	<p>Click here for the health reporting form Click here for the death reporting form For further information please contact: health@hwva.org.uk</p>
<p>IRISH WOLFHOUND This study is investigating the factors influencing bloating and the development and outcome of GDV in Irish Wolfhounds in the UK.</p>	<p>Click here for the survey For further information please contact: researchcoordinator@iwhealthgroup.co.uk</p>
<p>ITALIAN SPINONE To look at the overall health of the Italian Spinone and collect information that will help improve our knowledge on the prevalence of any existing conditions and identify any potential emerging issues, in order to improve the breed's health and welfare for future generations.</p>	<p>Click here for the survey For further information please contact: elaine_kirkham@hotmail.com</p>
<p>LEONBERGER To look at the overall health of the Leonberger and collect information that will help improve knowledge on prevalence of any existing conditions and identify any potential emerging issues, in order to improve the breed's health and welfare for future generations.</p>	<p>Click here for the survey For further information please contact: health@thekennelclub.org.uk</p>
<p>PARSON RUSSELL TERRIER To continually monitor the overall health of the Parson Russell Terrier and collect information that will help improve our knowledge on the prevalence of any existing conditions and identify any potential emerging conditions, in order to improve the breed's health and welfare for future generations.</p>	<p>Click here for the survey For further information please contact: ratscallionterrier@hotmail.co.uk</p>
<p>PARSON RUSSELL TERRIER To establish the level of DNA testing for a range of genetic disorders in UK registered Parson Russell Terriers.</p>	<p>Click here for the survey For further information please contact: ratscallionterrier@hotmail.co.uk</p>
<p>PUG To investigate the outcome of Pugs suffering with mast cell tumours in the UK. The study will assess the effects of gender, neuter status, and body condition score on the potential outcome of each dog.</p>	<p>Click here for the survey For further information please contact: sv-dogs@nottingham.ac.uk</p>
<p>PYRENEAN SHEEPDOG To look at the overall health of the Pyrenean Sheepdog and collect information that will help improve our knowledge on the prevalence of any existing conditions and identify any potential emerging issues, in order to improve the breed's health and welfare for future generations.</p>	<p>Click here for the survey For further information please contact: psdhealthsurvey@btinternet.com</p>
<p>SALUKI To look at the overall health of the Saluki and collect information that will help improve our knowledge on the prevalence of any existing conditions and identify any potential emerging issues, in order to improve the breed's health and welfare for future generations.</p>	<p>Click here for the survey For further information please contact: health@thekennelclub.org.uk</p>
<p>STANDARD POODLE Standard Poodles can sadly be affected by bloat (otherwise known as gastric dilation, GD); which can sometimes lead to the emergency condition of "twisted stomach" (GDV). The University of Nottingham together with the Standard Poodle breed club have developed a new survey, which aims to identify approaches that can reduce the likelihood of one or both conditions happening.</p>	<p>Click here for the survey For further information please contact: health@thekennelclub.org.uk</p>
<p>ST BERNARD To look at the overall health of the St Bernard and collect information that will help improve knowledge on prevalence of any existing conditions and identify any potential emerging issues, in order to improve the breed's health and welfare for future generations.</p>	<p>Click here for the survey For further information please contact: t.booth73@ntlworld.com</p>
<p>The Kennel Club would like to invite you to advertise your up-coming health-related clinic, seminar or survey on the health pages of The Kennel Club website and in The Kennel Club Journal. Please allow plenty of notice before the actual event. To submit your health-related clinic, seminar or survey for advertisement, please complete the relevant form on our website:</p>	
<p style="text-align: center;">Health-related clinic Health-related seminar Health-related survey</p>	

Research - request for participants

BREED/S	AIM OF RESEARCH	SAMPLE/SURVEY	NAME AND CONTACT DETAILS
<ul style="list-style-type: none"> • Affenpinscher • Boston Terrier • Boxer • Cavalier King Charles Spaniel • Chihuahua • Dogue de Bordeaux • Griffon Bruxellois • Japanese Chin • King Charles Spaniel • Maltese • Pekingese • Pomeranian • Shih Tzu <p>(Adult dogs over 12 months of age)</p>	<p>The BOAS Research Group at the University of Cambridge are conducting a study to identify and define the risk of respiratory disease in different brachycephalic breeds.</p>	<p>For this study, the researchers will perform breathing assessments, clinical examinations, take conformational measurements and may use whole-body barometric plethysmography.</p>	<p>For further information please contact:</p> <p>brachystudy@vet.cam.ac.uk or ft270@cam.ac.uk</p>
<ul style="list-style-type: none"> • Affenpinscher • Boston terrier • Boxer • Cavalier King Charles Spaniel • Chihuahua • Dogue de Bordeaux • Griffon Bruxellois • Japanese Chin • King Charles Spaniel • Maltese • Pekingese • Pomeranian • Shih Tzu <p>Participant requirements:</p> <ul style="list-style-type: none"> • requires dental treatment • 4 years and over • not previously had BOAS surgery 	<p>The BOAS Research Group at the University of Cambridge are conducting a study to research internal risk factors for BOAS and other brachycephalic related disease.</p>	<p>For this study, the researchers will use CT scan images taken from dogs admitted to the Queen's Veterinary School Hospital in Cambridge for dental treatment (free dental treatment, including scale/polish and extractions, with participation in research).</p>	<p>For further information please contact:</p> <p>brachystudy@vet.cam.ac.uk or ft270@cam.ac.uk</p>
<ul style="list-style-type: none"> • Border Terrier • Retriever (Labrador) • Spaniel (Cocker) <p>(Adult dogs over 12 months of age)</p>	<p>The BOAS Research Group at the University of Cambridge are currently undertaking research into BOAS and other conditions related to the short-skulled brachycephalic conformation. They are looking for control dogs to take part in this study.</p>	<p>To participate, please click here</p>	<p>For further information please contact:</p> <p>brachystudy@vet.cam.ac.uk or ft270@cam.ac.uk</p>

Multi-Breed Health Screening Clinics

Eye Scheme examinations (Canine Health Scheme BVA/KC/ISDS)			
DATE	LOCATION	PANELLIST	CONTACT
Every Friday morning	Focus Referrals, Sandpiper House OX16 1TG	Mike Rhodes	To book, please click here
JAN '24 14th	Fakenham, Norfolk	James Oliver	To book, please click here

KC File for January

FIELD OFFICER VISITS EXCELLENT EVENTS

01/10/2023	Australian Cattle Dog Society Of Great Britain Nether Whitacre Village Hall
07/10/2023	Ayrshire Collie Club Geilsland Estate
07/10/2023	South West Welsh Corgi Club Hutton Moor Leisure Centre
07/10/2023	Keeshond Club Roade Village Hall
08/10/2023	Akita Association Wednesbury Leisure Centre
08/10/2023	Midlands Border Collie Club Kennel Club Building
08/10/2023	Bridgwater & District Canine Society Woolavington Village Hall
08/10/2023	North West Toy & Utility Society Adrenaline Centre
21/10/2023	Basset Hound Club Of Scotland Crawfordjohn Public Hall
22/10/2023	Terrier Club Of Devon And Cornwall Culm Valley Sports Centre
22/10/2023	South Eastern Welsh Springer Spaniel Club Cobham Village Hall

DE-REGISTRATION:

The following societies have de-registered:

Swansea & District Canine Club
Clacton & District Canine Society
Bridge House Agility Club
Central Cornwall Canine Association
Sunbury & Hanworth Dog Training Club

DISQUALIFICATIONS

At its meeting of the 3 October 2023 the Show Executive Committee made the following disqualifications:

- Mr R Brewster & Ms J Green – Bath Canine Society – Championship Show – 26-29 May 2023 – Border Terrier – **DUKE OF YORK FIERY LUCIFER TO STOWTHORNEY (IMP CZE)** – 3rd Open Dog – F(1)8
- Mr S Evans & Mrs M Coleman – Chinese Chow Club – Open Show – 24 June 2023 – Chow Chow – **BON TRIUMPH DIADEM (IMP RUS)** – 1st Novice Bitch – F(1)8.1
- Mrs JM Rice – Bath Canine Society – Championship Show – 26-29 May 2023 – Tibetan Spaniel – **RICOX I LOVE MY MINI ME** – 1st Novice Bitch – F(1)8.1
- Miss L Groarty – Bullmastiff Society of Scotland – Championship Show – 18 June 2023 – Bullmastiff – **ARDHUB NICE AND SPICY WITH BRAEAARON** – 1st Junior Bitch – F(1)20.g

PENALTIES & FINES

At its meeting of the 21 February 2023 the Show Executive Committee imposed the following penalties:

Breach of Regulation F11.b – Dog not under control – Reprimand, the dog's record endorsed to confirm that it is no longer eligible for entry at any event held under Kennel Club Rules and Regulations, nor any unlicensed events recognised by the Kennel Club, Regulation B.12.b(5) refers:

- Mr Cornelis – Rhodesian Ridgeback – **VILLAGEDOGS SOME LIKE IT HOT** – Midland Counties Canine Society – Championship Show – 27-30 October 2022

At its meeting of the 26 September 2023 the Judges Committee imposed the following penalties:

Breach of Regulation F(1)20.g – Judging and Exhibiting at the same show

- Mrs L Wilson – Special Awards Classes – Bullmastiff Club of Scotland – Championship Show – 18 June 2023 – Warned

At its meeting of the 3 October 2023 the Show Executive Committee imposed the following penalties:

Breach of Regulation F(1)22.d(2)(a) and F(1)22.d(1) – Failure to submit a judge and Judge officiated for same breed/sex within 18 months

- Scottish Bull Terrier Club – Championship Show – 15 July 2023 – Warned and fined £300

KENNEL CLUB RULE A12

The Committee having carefully considered the convictions of Mr Lee Howard of Kettering, Northampton for causing unnecessary suffering offences contrary to the Animal Welfare Act 2006 from the Northampton Magistrates' Court on 30 August 2023.

The Committee impose the following penalties:

1. To disqualify him from exhibiting at, taking part in, attending and/or having any connection with any event licensed by the Club. If any person disqualified under this sub-paragraph shall attend any canine event whilst disqualified the Board shall have the power to increase the period of disqualification [A11 j (4)]
2. To disqualify him from being or becoming a member of any canine club or society registered with or affiliated to the Kennel Club [A11 j (5)]
3. To disqualify him from acting as an Officer or serving on the Committee of any canine society [A11 j (6)]
4. To disqualify him from taking part in the management of any event licensed by the Club [A11 j (7)]
5. To disqualify him from judging at any event licensed by the Club [A11 j (8)]
6. To disqualify him from effecting registrations of any or all dogs and/or progeny of such dogs which are owned and/or registered by him (whether or not jointly owned and/or whether or not owned and/or registered in the name of a nominee) [A11 j (9)]

The suspensions and disqualifications are to be for Life from 30 November 2023.

The Committee noted that Mr Howard pleaded guilty to charges of causing unnecessary suffering to a dog, two cats, a parrot and two cockatiels namely by failing to take such steps as were

reasonable in all the circumstances to ensure that the needs of the animals for which he was responsible were met to the extent required by good practice in that suitable environment, continuous access to an adequate supply of clean fresh drinking water, need to be able to exhibit normal behaviour patterns, to be protected from pain, suffering, injury or disease.

The Court imposed an 18 week custodial sentence suspended for 18 months; a Rehabilitation Activity Requirement of 20 days; and a lifetime disqualification in respect of all animals from dealing in them, owning them, keeping them, participating in keeping them and from being party to an arrangement under which Mr Howard is entitled to control or influence the way in which they are kept, transporting them and arranging for the transport of them.

The Kennel Club is duty bound to follow and at least reflect any period of disqualification given by the Court. The Committee noted the custodial sentence (suspended) which was imposed by the Court.

Mr Howard pleaded guilty to offences involving a clear and unacceptable lack of the Animal Welfare Act considerations. This is entirely incompatible with being associated with and using Kennel Club registration facilities. The Committee's view was that a lifetime disqualification from Kennel Club regulated activities is appropriate to reflect the seriousness of the matter.

As with previous cases involving offences under the Animal Welfare Act 2006 it is worth expressly stating that any breeder must ensure that the needs of an animal must be met to the extent required by good practice under the Animal Welfare Act 2006 including;

- (a) its need for a suitable environment,
- (b) its need for a suitable diet,
- (c) its need to be able to exhibit normal behaviour patterns,
- (d) any need it has to be housed with, or apart from, other animals, and
- (e) its need to be protected from pain, suffering, injury and disease.

MAINTENANCE OF TITLE FEE 2024

Secretaries of Registered and Affiliated Societies are reminded that if renewal of Maintenance of Title is required for the year, their Maintenance of Title fee for 2024 is due during the month of January 2024.

Societies should have recently received an email advising that if they would like to set up a Direct Debit, they must email the SASS department to activate this by no later than 1st December 2023.

Please do not request to set up a Direct Debit from this point forward, and please do not attempt to set one up especially via the online portal, as it is too late to do so. We will be in contact again later this year to advise when societies will be able and how to set up a Direct Debit for the 2025 Maintenance of Title fee.

Please be reminded that if you have not yet paid the Maintenance of Title fee for 2024, please contact the Society & Show Services department

KC File for January

at sass@thekennelclub.org.uk to advise, so we can push the Maintenance of Title payment into the cart via the club portal to be paid by credit/debit card. It is vital that you confirm by email once payment has been made by credit/debit card. Guidance on how to use the online portal can be found by visiting <https://www.thekennelclub.org.uk/dogshowingsecretary>.

If you are experiencing any issues or need to notify us to push payment into the club portal card, feel free to contact us by email where we can assist.

Once payment transaction has been paid and you have notified us, no further action is required.

ANNUAL RETURNS 2024

Secretaries of Registered and Affiliated Societies and Breed Councils are reminded that Annual Returns due in 2024 must be submitted to the Kennel Club by 31 July 2024.

Please submit your Annual Returns online via your online account: <https://www.thekennelclub.org.uk/forms/registered-and-listed-status-club-returns/>

In order to submit your Annual Returns online, please ensure you have a Kennel Club account set up with us first, and that you are connected to the Society or Societies in order to do this.

What to do if you don't have a Kennel Club account?

Guidance on how to set up a Kennel Club account can be found by clicking on the link below. If you are setting up a Kennel Club account for the first time, please contact us by email at sass@thekennelclub.org.uk with your Society's name and the email address you have used to create the online account, so we can connect you to the Society or Societies: <https://www.thekennelclub.org.uk/about-us/help-centre/help-centre-online-account-services/>

When you log into your Kennel Club account, select the Society name and then select 'Manage account.' Scroll down to your dashboard where you will see the Annual Returns link. Further guidance on how to navigate the Club Portal can be found by clicking on the link: <https://www.thekennelclub.org.uk/dogshowingsecretary>

If you are unable to submit your Annual Returns online, please email the documents to sass@thekennelclub.org.uk

The items required to complete the Annual Returns are listed in the Kennel Club Year Book, under C Regulations Secretaries of Breed Clubs, Breed Councils, General Canine Societies, Training Clubs and Agricultural/Municipal Societies should note that all items must be forwarded each year, even if there are no changes from the previous year.

Any proposed changes to rules must be clearly indicated. In the case of a Breed Club which uses its Breed Council's judges lists, this fact should be clearly notified in a covering letter.

For Breed Clubs and Councils, criteria for inclusion on judges lists must also be submitted. Any proposed amendments to the criteria must be highlighted and approval sought.

Breed Clubs are also required to submit the Kennel Club Code of Ethics with any additional clauses as part of the Annual Returns.

We would like to remind secretaries that if your club is required to submit the Officers and Committee list, we require the full names, positions, addresses, contact numbers and email addresses (where possible) of all the officers and committee members.

A quick overview of what is required can be found below:

Breed Societies Annual Returns:

Breed clubs must include the following within their Annual Returns:

- Officers and Committee list (names, positions, addresses, telephone numbers and email addresses, where possible)
- Balance sheet (this must be signed)
- Rules/Constitution
- Code of Ethics (the Code of Ethics must consist of 14 points)
- Judges list
- Members (total number of members only)

General Canine Club Annual Returns:

General Canine Clubs must include the following within their Annual Returns:

- Officers and Committee list (names, positions, addresses, telephone numbers and email addresses where possible)
- Balance sheet (this must be signed)
- Rules/Constitution
- Members (total number of members only)

Agricultural/Training Club Annual Returns:

· Officers and Committee list (names, positions, addresses, telephone numbers and email addresses where possible)

- Balance sheet (signed)
- Rules/Constitution
- Total number of members (for Dog Training clubs only)

Breed Council Annual Returns:

- Rules
- Email/telephone number for the member club's representative
- Officers with contact information (addresses, contact numbers, email addresses where possible)

- Accounts
- List of societies
- Judges list

When submitting the Annual Return items, please ensure the documents are legible.

Please do not contact us about the Annual Returns unless you are experiencing issues. Do not be alarmed if you do not receive an acknowledgement from us. We will only contact you if there is a problem/missing items.

INITIAL CONSIDERATION

Branch

At its meeting in September 2023, the Kennel Club Board approved the following Registration of Branch application:

BRITISH ASSOCIATION FOR GSDS – WALTHAM DOG SPORTS CLUB IGP (Proposed)

Activities: IGP Dog Sport

Area of Operation: Leicestershire

Secretary: Ms N Jouni, Seven Acres Eastwell Road, Waltham on the Wolds, Melton Mowbray, LE14 4BP

Change of Title

At its meeting in September 2023, the Kennel Club Board approved the following Change of Title application:

BARNSTAPLE & DISTRICT DOG AGILITY SOCIETY (Proposed) from Barnstaple & District Dog Training Society

Activities: Agility

Area of Operation: Devon

Secretary: Ms M Prowse, Thorncliffe House, East Street, Bishops Tawton, Barnstaple, Devon, EX32 0DQ

Registration of Title

At its meeting in September 2023, the Kennel Club Board approved the following Registration of Title application:

FARNDON RINGCRAFT CLUB (Proposed)

Activities: Ringcraft, Obedience Matches, GCDS

Area of Operation: Nottinghamshire, Lincolnshire & Leicestershire

Secretary: Mrs T Booth, 193 Browbridge Road, Newark, Nottinghamshire, NG24 4DG

Any currently registered Societies wishing to lodge objections to these applications should address their correspondence by 31st January 2024, to Society & Show Services Team (sass@thekennelclub.org.uk)

Subscribe to the Kennel Gazette from £25 a year

To find out more about becoming an affiliate member or to purchase, visit:
thekennelclub.org.uk/shop/memberships/kennel-club-affiliates/

For the Members

NEW MEMBERS

Mrs S Broad
Miss S Anderton
Mrs H Banks
Ms L Barnes
Mrs L Bonsall
Mrs A Callister
Dr D Catilina
Mr G Condron
Mrs L Crombie
Mr A Czegledi
Mr P Darby
Ms M Dodd
Mrs DK Douglas
Ms M Dunhill-Hall
Ms P Edens
Miss M Evans
Mr S Gosling
Ms S Hann
Mrs P Freeman
Ms J Hayes
Miss V Hayes
Mrs J Higgins
Mr M Johnstone
Mr S Kimblin
Mrs F Lee
Mr MJ Lewis
Ms E Lewis
Dr GE Maclellan

Mrs P Maclellan
Mrs L Mault
Mrs L McBeth
Mr M McBeth
Mr T Mervyn
Mrs L Moss
Mrs L Nelson
Mr C Pack
Mrs L Pack
Mrs CJ Palumbo
Miss LJ Paterson
Dr S Paturel
Mr J Ritchie
Mr N Stevens
Miss L Tanton-Joy*
Miss O Timms
Mr S Trefan
Mrs A Trefan Torok
Mrs C Vogels
Mr D Walton
Mrs S Walton
Mrs J Weyman
Dr SJ Winson
Mrs VA Walden
Miss LD Williams
Ms E Wright
Mrs A Young
*Denotes former Associate/Senior YKC member

NEW ASSOCIATES

The following applicants have been elected Associates of The Kennel Club:

Miss T Atkinson
Mrs E Beecham
Mr A Bye
Mrs C Carpenter
Miss L Dearn
Miss YC Dumont
Mrs S Graves
Mr G Gregory
Mrs B Hucker
Mrs M Kendall
Mr J Kirk
Mrs M Nelis
Miss A Primmer
Mrs L Reid
Ms L Shrieves
Mrs E Sutton
Mrs T Teese
Mr P Teixeira

OBITUARIES

It is with sadness that The Kennel Club wishes to record the death of the following member:

Mr MT John

CLUB OPENING TIMES

The Club is open 5 days a week, Monday to Friday from 10.30am to 5.00pm. For dining room bookings, please telephone 020 7518 1017.

The Kennel Club Accredited Instructors Scheme



The Kennel Club Accredited Instructors scheme offers its members the opportunity to gain a nationally-recognised vocational accreditation based on a robust standard set by The Kennel Club. It is the first and only scheme for dog training instructors and behaviourists that has achieved programme accreditation from City & Guilds, a globally-recognised benchmark of quality.

This section of The Kennel Club Journal is dedicated to Kennel Club Accredited Instructor members. It provides information on the resources available to members, announcements on newly awarded Kennel Club Accredited Instructors, and KCAI Scheme news and updates.

For more information on the KCAI Scheme, please visit: www.kcai.org.uk

CRUFTS 2024 TICKETS ARE ON SALE NOW

Don't forget as a KCAI member you can save 10% on your Crufts general admission tickets.

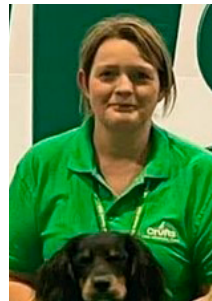
To claim your 10% discount, head to The Ticket Factory website, select your tickets and then at the checkout enter the discount code KCAICRUFTS24 into the promo code box.

NEWLY AWARDED KENNEL CLUB ACCREDITED INSTRUCTOR

Congratulations to the following members on achieving accreditation to become a Kennel Club Accredited Instructor:



Debbie Serpant KCAI (CD)
Kennel Club Accredited Instructor in Companion Dog Training



Heather Gibbs KCAI (CD)
Kennel Club Accredited Instructor in Companion Dog Training

To celebrate the achievements of our members who have gained Kennel Club accreditation, we want you to ask your clients to nominate you for the recognition you deserve.

To encourage your clients to nominate you, or if you know of a fellow Kennel Club Accredited Instructor who deserves this award, click on the link:

www.thekennelclub.org.uk/forms/kennel-club-accredited-instructor-of-the-year-2023-nomination/

The winner will be invited to attend a ceremony at Crufts 2024 on 9th March to celebrate winning the award, and will receive £200 donated from **The Kennel Club Educational Trust** in order to further their involvement with dogs.

Nominations close on 31st January 2024, so get voting now.

NEW YEAR'S RESOLUTION!

Make it a New Year's resolution to apply for your practical assessment. What are you waiting for, if you have already completed the online assessments, visit the members page and download your application form today to get started.

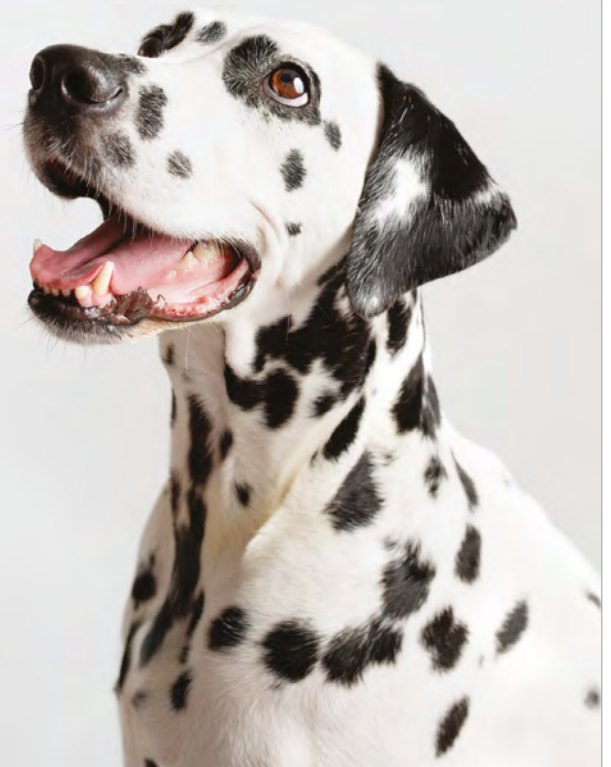
If you need any support then the Accreditation Adviser and KCAI Team are available please contact us at kcai@thekennelclub.org.uk



MAKING A DIFFERENCE FOR DOGS

**We fund projects
that give dogs healthier,
happier lives**

From investing in ground-breaking canine science and research, to funding medical and support dog training programmes and life-saving dog welfare projects, we bring cutting-edge technology, compassion and kindness to the space where dogs and people meet. Please visit our website to read more about our work and how you can help. Together, we can make a difference for dogs.



DONATE ONLINE
www.kennelclubcharitabletrust.org


THE KENNEL CLUB
 CHARITABLE TRUST

Kennel Names

The following Kennel Names have recently been granted by The Kennel Club. Objections to any of the approved Kennel Names listed below must be lodged in writing within four weeks of the publication of this Journal. If an objection is successfully upheld The Kennel Club reserves the right to revoke the Kennel Name and any subsequent registrations. Objections should be addressed to:

The Customer Services Team
Kennel Club House
Gatehouse Way
Aylesbury
HP19 8DB.

KENNEL NAME APPROVALS

ABBATIARUBY	CALIMATHI	HOUGUNDALE	OTTATECK
ABHAINN	CALSOFEE	HUMEDALES	OTTERBRIDGE
ADORANABULLZ	CARBANAK	IMPERIALTOR	OWREKVILLA
AFONFLO	CARLIDNACK	INCHSTELLIE	PANKELO
AGALLAICH	CASADIBOSDEN	INGLEGLADE	PARCYDERI
ANTONIOUDAX	CASARYELIA	IRIESTARS	PATRIGRACE
AQUASPANGLES	CHAMFRONSTAR	JASPERLEIGH	PENALIGON
ARDCHOILLE	CHEAMIGO	JAYJULKER	PLYMKEES
ARTANSHAUS	CHEETERA	JAYNOS	PONDEROSASKY
ASHWINPOOCH	CHISSYBULLS	JJAVACOB	POTKILNIAN
ATTHEVALE	CLANATES	JOJARU	PRAELIA
AULDHAUGH	CLEHATRO	JONDALTAS	PRAIRIEHOUSE
AURGENTIOUS	COPPERWREN	KALLUNO	PRIMELUPUS
AUSDEMFELS	COULBARNARD	KEMNISHDANES	PRIMISTAFF
AUTUMNSPICE	CRAIGLICH	KEMPHILLWAY	PROUDSTAFF
BARKINGDOM	DANBULL	KEMPLINE	PUPAKOK
BEARHUGS	DANKACHAE	KENRAURA	QUOSCIES
BECHERS	DAVONRIDGE	KIAKAVORA	RAERBRER
BEECOOMBE	DAXSTARZ	KIDOVABULL	REDFOXMARSH
BENNANBRAE	DEAKSBETTY	KILLORA	RETNEPRAC
BETHBOTH	DEBENGEM	KINGSQUERCUS	REVONTULET
BEZZIEBULLZ	DEERHEART	KINTURKHOUSE	RIVAYRUNNERS
BLEAWHARFE	DEERKYM	KINVAIDBELLE	ROBLEQUEMADO
BOBERNLARK	DOLLYWORLDS	KYOOTKUMA	ROCHETHISTLE
BOBERNWOOD	DRUMFERGUE	LANGDEN	ROESCLAN
BOSCADOR	EBONYSRING	LAUCERNE	ROOKCROSS
BOUGIEBEAST	EIDERVALLEY	LAYLASTAFFS	ROSAVAELLIR
BOURNUSHKI	ELELBULLZ	LINANSTE	ROUFNILLA
BREMANHAR	ELIMDAW	LIZZANELLO	RUALOISTE
BROADRUMS	FAIRHAMBROOK	LLANEURGAIN	RUDELLER
BROHEDD	FALDINGWOOD	LOCHINSPIDAL	RUFFINGTONS
BURGSAAWE	FALLOWLODGE	LOWTHORPEJOY	RUMIALANA
BURTONSCOOKY	FLIXRAIGN	MAGESTICARES	RUSHMILL
CALDECACRE	GEEWIZGINGER	MALLUSHAH	SANDECOTES
	GIGATOR	MANNYSTAFFS	SCARESSO
	GLADBEUS	MASSEYJEMAR	SETTAVISTA
	GLEANNBREA	MELECTABEE	SHADYMOORE
	GOLDMYRTUS	MILARKEBULL	SHANAGOLDEN
	GROVECOLEIGH	MILLARSBLACK	SHARODAY
	GUNNERBEARS	MONDRAYJON	SHELBYBULLZ
	HANANS	MORTEWES	SINSEABEAG
	HARKAPPLE	MYLANUKA	SKULLCORT
	HARTDREAM	MYMELD	SLEEPFLOWER
	HAWKDUFFFRYN	NANTLLAWENOG	SNAPTRAP
	HAYHOUNDZ	NAVALARA	STANELLIE
	HEATHBEE	NEBBURY	STAVELEYGATE
	HEBRIDEANSKY	NEWMILLER	STOICVIRTUE
	HIGHWOODSETT	NOLDOLI	SULBYBRIDGE
	HILLFOX	NUCHEX	SUMAIYA
	HOLMEHILL	ORDHAWAY	SUYRTAYSE
	HONOURWAY	OSHADEVIL	SWANSWING

Kennel Names

TANSUMSKY
TAUREAUCHIEN
TEIGNTONIC
THEOSBULLYZ
TIBJANTER
TIGHEWOOD
TIMARNEA
TOCKCRANSKYE
TREFINVOR
TRESMEAKE
TUSOPHINA
TYLWYTH
WIDGEONWAY
WILDFORCES
WINTERFALLEN
WINTERLUMI
WIRESANGEL
WRIGHTCAST
WYNCHOBE
XENTADER
YOSHE

JOINT INTERESTS

ANGELROCK: Mrs D Wilson & Miss J James
BOLEBROKEOLD: Miss E Laurie & Mr J Cooper
BRATILDA: Mesdames C & L & Misses BC & A Patterson
GUNALT: Messrs D Alcorn & G Ingram
HARKLINE: Mr WP & Mrs P Harkin
HAWKSFLIGHT: Miss NE Mackie & Miss J Bugden
JOTTCLIN: Mr JJ & Ms B Ilott
KRISTLEHEART: Miss G & Mrs P O'Brien
MATTAME: Miss A Scott & Mr M Lewis
RAVENWOOD: Mr T & Mrs G Robertson
SCHNURRBART: Mr S & Mrs C Fellows

SEPARATE INTEREST

ARAKI: Miss S Darnell
DRUMKILTY: Miss PA Brightley
GOLDENISLE: Miss C Arnall
JACLEE: Mrs K Price
KARITAGAN: Mr S Bunker
KEZDEK: Mr DW Williams
KEZDEK: Miss SJ Williams
LUMINASTAFFS: Mr L Smith
MALTIAMORE: Mrs J Wasilewska
OLEARIA: Mrs VA Jones
RAVENSVIEW: Mr J Scamp
RAVENSVIEW: Miss L Scamp
TANGLEDWOOD: Mr J Gibb-Stuart
WILLOWTHORN: Miss WRJ Johnson

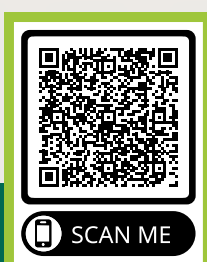
KENNEL NAME TRANSFERS

ITCHENPARK: Mr N & Mrs G Wyatt To Mr N Wyatt
BICKINSTAR: Miss G Corti & Mr E Funke To Miss G Corti
DALLEYDREAM: Miss J Varney & Mr M Parkin To Miss J Varney
STARORA: Mr C & Mrs S Matthews To Ms S Matthews
TURNSTONE: Mr J & Mrs V Turnbull To Mrs V Turnbull
ARLILS: Mrs D White To Mr G White
WILTHOM: Mrs LJJ Shine To Mr J Shine
MALACANTE: The Late Mr J & Mrs E & Miss A Kelsey To Mrs E & Miss A Kelsey
VARDHUNDR: Mrs J & Mr L Wolvey To Mr L Wolvey



Get to know your dog's genetics better with The Kennel Club's DNA Testing Services

Our DNA testing kits make DNA testing simple. Order yours today by visiting our shop on The Kennel Club website.



Visit our website to find out more
thekennelclub.org.uk/kcdnatesting



Fees

<https://www.thekennelclub.org.uk/shop/registrations/>

REGISTRATION FEES

*FORM 1 LITTER REGISTRATION SERVICES

Puppy registration up to the age of 12 months	£18 each
Kennel Club Assured Breeder	£20 each
Non Kennel Club Assured Breeder	
Litter summary certificate - replacement copy	£5
Late registration per dog over the age of 12 months	£60
Late registration per dog - addition to a litter already registered	£60
Find a Puppy service	£20
Find a Puppy Service with additional advert	£25
Litter naming service	£20
Litter registration requiring registration of an overseas stud dog:	
Recording of 3 generations from a certified pedigree	£20
Recording of 5 generations from a certified pedigree	£25

OVERSEAS SERVICES

*Form 4 Registration of an imported dog (including a 3 generation pedigree)	£30
Registration of an imported dog (including a 5 generation pedigree)	£40
*Form 13 Application for an export pedigree	£50
*Form 17 Application for the re-importation of a dog	£15
*Form 14 Authority to Compete for overseas competitors	£30

KENNEL NAME SERVICES

*Form 10 Registration of a Kennel Name plus 12 months' maintenance	£70
Kennel Name annual maintenance fee (annual)	£20
Kennel Name annual maintenance fee (Direct Debit)	£18
*Form 11 Vary the ownership of a Kennel Name	£45
Preservation of a historically significant Kennel Name by a breed club (50 years)	£50
*Form 8 Change of name of a registered dog - addition of a Kennel Name	£15
*Form 16 Change of name of a registered dog - removal of a Kennel Name	£30

PEDIGREE SERVICES

Three generation pedigree	£12
Five generation pedigree	£12
Enhanced five generation pedigree	£25

ADDITIONAL SERVICES

*Form 5 Registration of one dog on the Activity Register	£18
Transfer of registered ownership	£20
*Form 7 Change of name of a registered dog (within three months of initial registration)	£30
*Form 9 Registration of a Border Collie (ISDS)	£17

*Available to download from our website at www.thekennelclub.org.uk

CLUB AND SHOW FEES

REGISTERED AND AFFILIATED SOCIETIES

REGISTRATION OF TITLE (payable on application, 50% non-returnable)	
a. Societies	£100
b. Ringcraft Clubs and Branches	£25
MAINTENANCE OF TITLE	
a. Societies (if paid by Direct Debit)	£50 (£45)
b. Ringcraft Clubs and Branches (if paid by Direct Debit)	£20 (£18)

SHOWS AND TRIALS

SHOW LICENCES	
a. General Championship Show offering more than 40 sets of Challenge Certificates, (Any additional licence approved by the General Committee, at no extra cost)	£1000
b. General Championship Show offering 40 sets of Challenge Certificates or fewer	£250
c. Group Championship Show	£250
d. Breed or Obedience or Agility Championship Show (each)	£60
e. Premier Agility, Premier Obedience or Premier Heelwork to Music Show	£45
f. General or Group Open Show	£45
g. Open Shows Competitions (each) organised by Registered Clubs or Societies	£35
h. Open Shows Competitions organised by Authorised Clubs or Societies	£60
i. Limited Shows* and competitions organised by Registered Clubs or Societies	£10
j. Limited Shows and competitions organised by Authorised Clubs or Societies	£25
k. Companion Dog Shows*	£10
l. Special Events*	£10
m. Additional fee for each dog entered (excluding dogs entered not for competition and dogs entered for classes where Challenge Certificates were not on offer)	£ 0.20
n. General canine Society Open Shows: an additional fee of £2 per class for all classes over 600.	
o. Additional fee of 5p per entry over 1,000 entries per day, up to a maximum of £100 per day for Limited and Open Agility shows organised by Authorised Clubs	
p. For Licences issued to Authorised Clubs or Societies for Open Agility Shows there would be no change to fees for up to and including the first 10 licences per year, thereafter from 11-15 licences the fee would be £150 per day and for 16 or more licences a year it would be £250 per day.	
q. For Licences issued to Authorised Clubs or Societies for Limited Agility Shows there would be no change to fees up to and including the first 10 licences per year, thereafter from 11-15 licences the fee would be £100 per day and for 16 or more licences a year it would be £150 per day.	

TRIALS LICENCES

Two/three day Field or Championship Working Trial	£35
One day Field or an Open or Members Working Trial	£25

CHANGE OF LICENCE

Voluntary change of date or issue of revised licence	£6
--	----

*To cover Licences for General, Breed and Obedience Shows, Agility Shows and Flyball Competitions, fee payable for each applicable activity.

KENNEL CLUB COMPUTER SERVICES

In addition to the above fees, computerised documents, reports and pedigrees maybe available at rates of charges approved by the General Committee.

RALLY & LISTED STATUS AGILITY

The fees for Rally & Listed Status Agility are both £60. Listed Agility also has an additional fee of 5p per dog over 1000 dogs (maximum £100).

Partners in Pet Nutrition

PURINA
PRO PLAN

THE KENNEL CLUB
Making a difference for dogs



Save up to 40% off PRO PLAN®*

As the Kennel Club's official Partner In Nutrition we take this commitment seriously. Our ambition for this partnership is to provide the best support possible to you, by working closely together and supporting you along the whole journey of breeding and exhibiting.

Join our Breeder Connect Club for access to these great benefits:



Discounted Weaning Food



FREE Puppy Pack for New Owners



Next Day Delivery on all orders**



Dedicated Breeder Team Support



Discounts and Offers



New Owner and Breeder Referral Incentives



ABS Breeders – FREE gift



Access to our Expert Vet and Nutritionists

PRO PLAN Optistart

Our PURINA® vets and nutritionists have developed our PRO PLAN® PUPPY range with OPTISTART® to help give your puppy a great start in life. Specially formulated with Colostrum, the first mother's milk, OPTISTART® helps support your puppy's immune response by up to 50% more***.

For more information go to breeders.purina.co.uk



*Upon registration to our PRO PLAN® Breeder Connect Club. **Next day delivery for orders received by 9pm. All next day deliveries are subject to delivery slot availability and delivery postal code address. ***R&D report RDLS-RD "Enhance Immune & Gut Health in Dogs with Milk Derived Proteins" by Ebenezer Satyaraj compared to control fed group without OPTISTART®.

Visit breeders.purina.co.uk, Freephone 0800 001 4008