

The Kennel Club JOURNAL

THE OFFICIAL KENNEL CLUB PUBLICATION



DECEMBER 2024

News from The Kennel Club

Your monthly guide to what The Kennel Club is doing for you and your dogs straight from The Kennel Club Press Office...

In this issue...

Events	10
Field Trials	17
Seminar diaries	21
KC file for December	28
KCAI	29
For the Members	29
Judges	30
Kennel Names	36
Fees	38



Crufts 2024
Best in Show
winner Viking
and Melanie

© BeatMedia/The Kennel Club

Crufts 2025: Entries open

And The Kennel Club wants to hear from those competing at the event.

Turn to page 2 for details



December Kennel Gazette

The December issue of the Kennel Gazette welcomes back guest contributor Simon Parsons who recalls fond memories of the consummate breed specialist, Raymond Oppenheimer and how he was a guiding force in Bull Terrier circles and a master of the written word. Editorial panel member Terrie Cousins-Brown discusses the research behind why some breeds are born with a variety of tail lengths, one reader takes her

Continued on page 4

News from The Kennel Club

[MORE NEWS>>](#)

Crufts 2025: Entries open

And The Kennel Club wants to hear from those competing at the event.

Entries have opened for Crufts 2025, which is taking place at the NEC in Birmingham from Thursday 6 – Sunday 9 March next year. Tickets are also now on sale via crufts.org.uk.

Crufts 2025 will showcase over 200 pedigree breeds, beginning with the Terrier and Hound groups on Thursday 6 March, Utility and Toy groups on Friday 7 March, Gundog group on Saturday 8 March and concluding with the Working and Pastoral groups on Sunday 9 March. Elsewhere, the Junior Warrant final and Breeders competition will also take place on the Thursday, and the Joe Cartledge Memorial International Junior Handling competition and Vulnerable Breed final on the Friday.

Last year saw over 19,200 dogs competing for Best in Show, with the most overseas dogs entered than ever before – 3,700 dogs from 50 countries. At Crufts 2025, the Polish Hunting Dog will be in the Discover Dogs area for the very first time as a newly recognised breed. There will also be celebrations too for the Young Kennel Club (YKC), formerly known as the KCJO, as the organisation celebrates its 40th anniversary.

To enter Crufts 2025, or to find out more about qualification, visit crufts.org.uk/crufts-entries. Postal entries close on 6 January 2025 and online entries close on 20 January 2025. The schedule is available through Fosse Data services and The Kennel Club would like to thank Fosse Data for running Crufts entries. Exhibitors are asked to note that digital catalogues will be available this year. However, there will be the option to order a printed version if preferred, but they must be pre ordered on the entry form and collected at the show by 12 noon on the day they are valid.

The Kennel Club is also calling for anyone competing at Crufts – in any activity or discipline – to help to promote the benefits of dog ownership, dogs in society and taking part in canine activities. The organisation is looking for inspiring dogs and owners with interesting stories that it can communicate to the media in the run up to Crufts and during the show itself.

To give competitors at Crufts the potential opportunity to tell their dog's story to the wider world, The Kennel Club has set up an online form, which can be filled in by visiting crufts.org.uk/crufts-stories/

Examples of stories that might be of interest are:

- Dogs that have changed their owners' lives, or positively impacted the lives of others
- Dogs and/or owners or handlers that have overcome the odds
- Dogs with jobs outside of the show ring, or the canine activity they take part in
- Oldest and youngest Crufts competitors
- Two or more generations of the same family competing at Crufts

- A family with a very long association with Crufts
- Competitors who found love through their dog

Tom Mather, Crufts Chairman, commented: "Every year we look for remarkable stories that show the wide range of people who enjoy taking part in dog showing and the many other canine activities and disciplines, to showcase the impact that dogs have on our lives and to share some amazing stories of what goes on outside of the show ring.

"If you are competing at Crufts 2025 and have a good story to tell or an interesting history with Crufts that you are happy to be shared with the public, then let us know by filling out the online form and help us to show the world just how wonderful our dogs are."

Across the four days of the show, Crufts welcomes nearly 20,000 dogs, 160,000 people and sees over 8 million TV viewers tune into the Channel 4, More4 and All4 broadcast. All the main arena action is also live streamed on the official Crufts YouTube channel which in 2024 saw just under 3 million views.

If you are competing at Crufts 2025 and have a good story to tell, then let us know



More information and tickets for the event are available on the Crufts website:

[Crufts.org.uk](https://crufts.org.uk)

Tickets are free for under 8s, and advance tickets start at £15 for children (aged 9-15) and concessions, and £22 for adults (fees apply).

Please note that tickets are only available through our official ticketing partner AXS.

News from The Kennel Club

[MORE NEWS>>](#)

Update on RFG Scheme Entry Criteria for Bulldogs, French Bulldogs and Pugs at Crufts 2025

As Crufts entries opened on the 19 November, The Kennel Club has provided an update regarding the Respiratory Function Grading (RFG) Scheme entry criteria for Bulldogs, French Bulldogs, and Pugs.

To continue to ensure that dog shows remain an effective platform to monitor and improve dog health, the new health-related entry requirement for Bulldogs, French Bulldogs, and Pugs will apply as follows:

- **Mandatory RFG Scheme Assessment for Entry:** All Bulldogs, French Bulldogs, and Pugs exceeding 14 calendar months on the first day of the show (6 March 2025) will require an RFG Scheme assessment to attend. This requirement applies to all dogs attending the show, not just individual classes. Dogs assessed as Grade 3 will be excluded and not allowed to attend the show.
- **Age Requirement:** Bulldogs, French Bulldogs, and Pugs exceeding 14 months on the first day of the show will require a valid RFG Scheme assessment certificate issued within 24 months prior to the show's start date. Dogs aged 7 years or older will not require an RFG Scheme assessment dated within the last 24 months, provided they have undergone at least one RFG Scheme assessment in their lifetime.
- **International Exhibitors:** Overseas exhibitors must also meet the same RFG Scheme requirements as UK exhibitors. Assessments conducted in RFG Scheme licensed countries by approved assessors will be accepted. If an overseas RFG Scheme certificate is unavailable, exhibitors must arrange for an assessment before the show.

The Kennel Club is pleased to offer free RFG Scheme assessments at Crufts again this year

Testing facilities will be provided at The Kennel Club Building, Stoneleigh Park, on Wednesday, 5 March, and Thursday, 6 March 2025. Exhibitors must book an appointment in advance by contacting health@thekennelclub.org.uk.

- **Certificate Upload:** All exhibitors of Bulldogs, French Bulldogs, and Pugs must upload an RFG Scheme certificate for dogs exceeding 14 calendar months to their Fosse Data Account. Certificates must be valid and up-to-date for the day of the show. Once uploaded, the certificate will be sent to the Kennel Club for validation. Exhibitors will be notified as soon as possible if their certificate has been approved or rejected.
- **Entry Process:** Once a certificate is approved, exhibitors may proceed with their entry.

The criteria is included within the show schedule, and the certificate validation system is available on the Fosse Data website. The Kennel Club would like to urge exhibitors to upload certificates as early as possible to avoid delays. While it aims to review all certificates within 24 working hours, approval times may vary depending on demand closer to the entry closing date.

The Kennel Club is pleased to offer free Respiratory Function Grading (RFG) Scheme assessments for Bulldog, French Bulldog, and Pug exhibitors at Crufts again this year. While RFG assessments are not mandatory for dogs aged between 12 to 14 months on the day of the show, the Kennel Club strongly encourages exhibitors to utilise the free testing facilities available during the event. The free RFG Scheme assessments for these breeds will be available on Friday, 8 March, and appointments will be booked on the day on a first-come, first-served basis.



For further information, please contact health@thekennelclub.org.uk

News from The Kennel Club

[MORE NEWS>>](#)

December Kennel Gazette

Continued from page 1
dog on an outing to their local National Trust property to explore its new pawprint rating system that helps owners find the best dog-friendly places to visit, and we hear from two recipients that have benefitted from an annual bursary by The Kennel Club Charitable Trust, who have for the past 20 years supported the veterinary nursing profession alongside

the British Veterinary Nursing Association, that plays a crucial role in enhancing animal welfare. In health matters, sporting dogs' Christmas dinners rival fine dining as their owners use nutrition to enhance their dogs' performance and health.

In news, we highlight the number of successful partnerships

preparing themselves for Christmas at ExCeL at The Kennel Club Agility Stakes finals sponsored by Skinner's at the London International Horse Show. The UK's top qualified spaniels and handlers will be competing at The Kennel Club Spaniel Championships sponsored by Skinner's Field & Trial, Sporting Saint and BASC

in January and there is still time for qualified dogs to enter online.

And The Kennel Club Art Gallery celebrates a spectacular recent donation by the Earl-

Tomaszewski family to its collections of five original sketchbooks that belonged to the 19th century artist George Earl.

Our breed of the month is the multi-purpose Swedish Vallhund. We look back at its origins and how an advert in a newspaper led to this small grey dog coming out of near-extinction. Originally

developed as a cattle driving dog we report on a family of Vallhunds showing how passionate they are to be doing their job of herding on a smallholding. We meet 'Trev' who loves scentwork and mantrailing as well as 'Baiba', an eleven-year-old Pets as Therapy dog and the comfort she brings to so many people. The Breed Health Co-ordinator provides an update on the breed's health and explains breeding initiatives that can strengthen breed numbers to enable a healthy tomorrow. The breed is fortunate not to have a rescue issue and we hear why that is, as well as the heart-breaking story of ten-year-old Ellie whose life was turned around by a dedicated, loving couple. Two breed enthusiasts also reveal what it is like to live with this energetic breed who has a real aptitude to learn. Plus six judges choose their three favourite Swedish Vallhunds that they have judged in the show ring in the Judges' Choice.

...one reader takes her dog on an outing to their local National Trust property to explore its new pawprint rating system



Subscribe to the Kennel Gazette from £30 a year

- 12 issues of The Kennel Gazette
- 10% off selected Crufts and Discover Dogs tickets
- 10% off selected Kennel Club publications
- A copy of The Kennel Club Annual Report
- An affiliate loyalty card and pin badge



To find out more about becoming an affiliate member or to purchase, visit:

thekennelclub.org.uk/shop/memberships/kennel-club-affiliates/

News from The Kennel Club

[MORE NEWS>>](#)

The Kennel Club to provide webinars on the Judges Education online platform

The Kennel Club is providing a series of webinars for judges who wish to learn more about the Judges Education Programme (JEP) Breed Shows which is set to be launched online by the end of the year.

These webinars will cater to various groups, including breed education co-ordinators (BEC), new judges, single breed judges, multiple CC judges and clubs and societies.

The new Judges Education Programme Breed Shows is a comprehensive platform which will allow judges to easily upload their information, access essential educational resources, and stay up-to-date with the latest requirements and developments in breed judging.

Helen Kerfoot, Chief Canine Health, Events and Activities Officer said: "We are excited to be able to launch the new online Judges Education Programme Breed Shows by the end of the year. We appreciate there may be concern by some judges regarding the new platform, however the webinars will allow us to be able to provide a

walk-through for judges, exhibitors, clubs and other enthusiasts ahead of the launch and also offer further guidance on the new platform.

"The webinars, which will be free, will be available to join online via Microsoft Teams. We hope that judges, BECs and members of clubs and societies are able to take advantage of this offer and that they are able to use them to alleviate any concerns they may have."

Interested participants are encouraged to register early to guarantee a place, however further sessions may be added if there is the demand.

For those judges who are not able to attend online, The Kennel Club team will be at the Ladies Kennel Association (LKA) Championship Show at Stafford County Showground from 12-15 December 2024 where demonstrations and guidance will be offered.

Please register your interest as soon as possible to secure your place

Webinar schedule is as follows

3 DECEMBER, 5.30 – 7.30PM

Breed education co-ordinator meeting

<https://events.teams.microsoft.com/event/2ee1097a-724c-473b-af6c-0b7f22a35127@39b82a55-e5f2-48c9-8e13-feb1a568f5ec>

4 DECEMBER, 5.30 – 7.30PM

Clubs and Societies

<https://events.teams.microsoft.com/event/aadf540f-acae-4813-9779-51e953ab6cda@39b82a55-e5f2-48c9-8e13-feb1a568f5ec>

4 DECEMBER, 7.30 – 9.30PM

Multiple CC judges and Single CC judges

<https://events.teams.microsoft.com/event/2fd25d90-5a93-482b-8925-26c4ef3742db@39b82a55-e5f2-48c9-8e13-feb1a568f5ec>

9 DECEMBER, 6.30 – 8.30PM

New judges that do not give CCs

<https://events.teams.microsoft.com/event/0c71e806-92b5-4b60-8daa-a37cfc91632a@39b82a55-e5f2-48c9-8e13-feb1a568f5ec>

The Kennel Club hosts its first wedding at Clarges Street



Last month The Kennel Club was transformed and made history as it became the backdrop for its very first wedding.

Emily Thornton and her partner, Toby Margetts, tied the knot in a beautiful

ceremony on the ground floor, with the wedding breakfast served in the Club lounge.

Emily has been involved with Beagles since a child and was a successful junior handler

and YKC member. She first awarded CCs in Beagles in 2019.

We wish Emily and Toby all the best together and thank them for sharing their special day with us.

News from The Kennel Club

[MORE NEWS>>](#)

Health Standard is previewed following engagement with breed health co-ordinators



The Kennel Club is previewing amongst Breed Health Co-ordinators an evolved version of the Health Standard which has been reshaped and more than 150 health tests re-categorised due to the invaluable feedback from, and extensive collaboration with, breed communities over the summer.

Health testing uptake is not where it needs to be and so, in an international first of its kind, the Health Standard – first previewed amongst Breed Health Co-ordinators in June – aims to lay the foundations for change by giving all breeders, regardless of their level of experience, a clear, evidence-based guide about the health tests they should prioritise, prior to breeding.

The priority levels assigned to a health test have now been simplified into two categories, but continues to be based on data, collated over the past decade as part of the Breed Health and Conservation Plans, about how many dogs are affected by a condition and any significant trends.

However, some important amendments have been made as a result of breed community feedback, which are being presented to Breed Health Co-ordinators, alongside a new digital feedback form - which will be an ongoing way for breeders to give valuable feedback relating to the Health Standard, ahead of its launch at the end of the year.

Furthermore, Breed Health Co-ordinators are invited to have their

say on the naming of the two health testing categories – formerly ‘essential’ and ‘advisable’. The category names are important to describe and shape behaviours and attitudes in relation to health testing.

The aim is that they clearly tell puppy buyers and breeders new to health testing which tests are absolutely key, whilst recognising breeders who are going above and beyond, by using other important health tests to shape the health of their breed into the future.

The changes to the Health Standard, shaped by Breed Health Co-ordinators, are:

- Removal of the ‘other’ category, which existed for tests where there are gaps in knowledge about a test or condition – the 72 tests formerly in this list have been re-categorised in order to send a strong message about the continued importance of using these tests, which will in turn enable a wider body of data collected, to further understanding of these conditions.
- Low levels of genetic diversity in a breed to no longer be a filter impacting

the category status assigned to health tests – the aim is to send a strong message about the importance of carrying out health testing, even where genetic diversity is low. However, The Kennel Club continues to urge breeders to carefully balance the results of health tests against genetic diversity considerations when making breeding decisions, to ensure the best outcomes for individual litters as well as for breeds as a whole. Further research will be published by The Kennel Club in the coming months that will highlight the genetic diversity challenges faced by breeds and enable discussion of the potential solutions, on a breed-by-breed basis.

- Merging and re-categorising conditions with a genetic correlation – for all relevant breeds, hip and elbow dysplasia - due to the strong genetic correlation between the two conditions – have been assigned the same health category status, in instances where there was a difference. Furthermore, the priority assigned to conditions in breeds with different varieties, who share a common gene pool, have also been aligned.
- Highlight breed club schemes and information outside of those

[Continued>>>](#)

Some important amendments have been made as a result of breed community feedback

News from The Kennel Club

[MORE NEWS>>](#)

Health Standard is previewed following engagement with breed health co-ordinators - continued

recognised within the Health Standard categories - we recognise the importance of those initiatives co-ordinated by breed clubs, which may not be able to be recognised or formalised as a health scheme or test and have a Health Standard category assigned to them - and so we are providing signposting via an additional list, with links to these schemes, from within the Health Standard document.

Dr Nick Blayney, Chairman of the Health Advisory Group for The Kennel Club, said: "We know that health testing amongst all breeders is not at the level we want it to be and so the aim with the Health Standard is simple - to make doing the right thing easier, by creating an accessible guide to health testing for all breeders, regardless of their experience.

"The Health Standard is a huge piece of work made possible by the partnership between scientists at The Kennel Club and Breed Health Co-ordinators, not just in recent months but over the past decade. It makes use of the deep and extensive database and analysis carried out by The Kennel Club and the experience of, and data gathering by, the breed clubs. It provides a sound and reliable point of reference for anybody wishing to breed

responsibly and productively for their breed."

Use of evidence as the foundation of a fluid Health Standard

The ongoing collation by The Kennel Club of 1.6 million health testing and screening results has contributed significantly to making this project possible, but the Health Standard is a fluid document, based on prevalence and trends data - so individual tests will naturally change category over time, as new evidence and tests become available.

With thanks to Breed Health Co-ordinators, a number of pieces of peer-reviewed evidence not initially available to The Kennel Club have resulted in changes to the category of some tests for 11 breeds.

The Kennel Club warmly welcomes any data on an ongoing basis, which can be submitted for consideration by the Breed Health

Co-ordinator and integrated within future analysis as part of this evolving process. In addition, The Kennel Club will carry out a comprehensive five-year annual review of all data and health test categorisations.

Charlotte McNamara, Head of Health & Breeder Development, said: "We are grateful for the time and invaluable feedback provided by voluntary Breed

Health Co-ordinators, which has been critical in enabling us to arrive at this reshaped version of the Health Standard.

"We want to sincerely thank breed communities for their input so far and we also look forward to seeing the final outcomes of the Breed Health Co-ordinator views on the category names.

"When finalised and launched in December this will be our foundation for building awareness and improvement around the uptake of health testing, which will be monitored closely, in order to reduce the prevalence of disease within pedigree dogs in the future."

Future developments

Future changes that will come after publication include the evolution of The Kennel Club's list of recognised DNA tests, to include tests that have been identified as potentially relevant for the breed, but that are not currently recorded. Breed Clubs can submit a request for recognition of new DNA tests via the "application for a new DNA test" form on the Breed Health Co-ordinator portal.

The Kennel Club has also invited additional external including geneticists, epidemiologists and specialist veterinary surgeons to consult on some of the complex areas needing further consideration in future versions of the Health Standard.

"We want to sincerely thank breed communities for their input so far"



THE KENNEL CLUB
DNA TESTING SERVICES

Get to know your dog's genetics better with The Kennel Club's DNA Testing Services

Our DNA testing kits make DNA testing simple. Order yours today by visiting our shop on The Kennel Club website.

Visit our website to find out more [thekennelclub.org.uk/kcdnatesting](https://www.thekennelclub.org.uk/kcdnatesting)



News from The Kennel Club

[MORE NEWS>>](#)

The Kennel Club breed standards reviewed to ensure clarity and consistency

Engagement begins over new terminology that improves clarity of expectation around health, colour and temperament

The Kennel Club has produced standardised definitions for common terminology in breed standards, to ensure that they are used and interpreted consistently, and is now engaging with breed clubs about a number of amendments to individual standards that are proposed as a result. These include amendments to consistently describe any features that could be detrimental to a dog's health as 'unacceptable'.

The Breed Standards and Stud Book Committee [BSSB] has reviewed the usage of commonly occurring terminology in standards, used to describe the desirability or otherwise of a specific trait, in order to provide greater clarity of meaning and consistency across all breeds. A table of definitions has been produced to standardise how words such as desirable, acceptable, permissible, tolerated, undesirable and unacceptable are used in Kennel Club breed standards, which should be a useful guide to judges.

As a result of this work, amendments are proposed to many breed standards. This includes reviewing the terminology used to describe features that are detrimental to health or temperament, with 'unacceptable' being the consistent word now being used to describe such features.

Similarly, upon the recommendation of the Non-Breed Standard Colours Working Party, and following feedback from breed clubs, amendments have been proposed to the colour clauses of a number of breed standards, in line with the new table of definitions, to make it clear which colours are desirable and which are a departure.

The Kennel Club is now engaging with the relevant registered breed clubs about the proposed amendments. Breed clubs are being contacted directly and invited to give their initial feedback and raise any significant concerns with The Kennel Club, via their breed club secretary, by 31

January 2025. The earliest date at which any of the proposed amendments to the breed standards would become effective, would be 1 April 2025.

Additionally, the opening paragraph in all Kennel Club breed standards – which clearly underlines the importance of soundness and health when breeding and judging dogs – has been revised to align with the table of definitions as follows:

*'If a feature or quality is desirable it should only be present in the right measure. However, if a dog possesses a feature, characteristic or colour described as **highly undesirable unacceptable**, it must not be rewarded in the show ring.'*

(Deletion struck through, Addition in bold)
(Effective from 1 January 2025)

Tim Hutchings, Chairman of the Breed Standards and Stud Book Committee, said: "We will be engaging with breed clubs over the coming months about the proposed amendments to the breed standards, which



The Kennel Club has carefully reviewed to ensure the terminology used is clear and consistent across the board.

"This will also help those showing and judging dogs, so that there is absolute clarity and consistency in the terms used to describe features that are unacceptable, which include those that can be linked to poor health or temperament.

"We have proposed new wording to colour clauses to emphasise the importance of breed standard colours and to make a clear distinction between those colours which are desirable and those which are a severe departure from the breed standard.

"We look forward to engaging with breed clubs over the coming months and introducing amendments that will help to ensure that the terminology in breed standards is clear and consistent for judges and breeders alike."

The new table of definitions, which has resulted in proposed amendments to a number of breed standards, is as follows:

Term	Definition
Preferable/Desirable	A feature that ideally one would wish to see in the exhibit, often a breed feature
Acceptable	A feature that is often found in the breed
Occurs/May occur/Permissible	A feature that may be present and is not to be faulted
Tolerated	A feature that ideally one would rather not have, but one that is not considered a fault
Undesirable	A feature that should be considered a fault
Highly undesirable	A feature that should not be present in an exhibit being awarded high honours
Unacceptable/Not acceptable	A feature that is a severe departure from the breed standard, sometimes associated with health or welfare and must not be rewarded in the show ring

News from The Kennel Club

Research shows canine companions boost well-being

Statistics released ahead of World Mental Health Day showed the impact pets have on owners' mental health, as The Kennel Club called for people to nominate 'hero' dogs.

New research from The Kennel Club, released ahead of World Mental Health Day last month revealed the positive impact that dogs have on their owner's wellbeing, particularly those who struggle with stress, anxiety and loneliness.

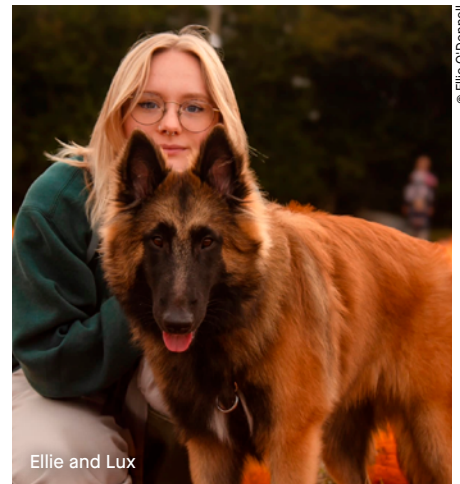
Three in four (73%) owners find that their dog improves their mental health, as well as helping to relieve feelings of stress and loneliness, while more than two-thirds (71%) say their dog helps to relieve feelings of anxiety.

Ellie O'Donnell, aged 23 from Horsham, credits her dog, Lux for being her lifeline when her mental health was at an all-time low: "When I got Lux, I had recently

finished university and was really struggling to find myself, but then going to training with Lux every Wednesday and Saturday, I found myself really thriving again.

"Lux teaches me to playful again and see the fun in things. Dogs are such a fundamental part of my life. Not having that best friend to help with routine, bring comfort or spend time with was a massive struggle for me – routine is something I find fundamental as an autistic person.

"Once I got Lux is when I started to feel myself again, to see the world as I used to."



Ellie and Lux

© Ellie O'Donnell



The Kennel Club pays respect to men, women and animals on Remembrance Day

On Monday November 11, The Kennel Club honoured the men, women, and animals who lost their lives in war and conflict.

The Chief Executive Officer, Jannine Edgar, laid a wreath at the Animals in War Memorial on Park Lane, paying tribute to the bravery and sacrifice of the countless animals who served alongside our forces.

Paws and paint:

Calling all young artists and photographers to help celebrate YKC milestone

Entries are now open for the Young Kennel Club's (YKC) annual Artist of the Year competition and budding painters and photographers amongst the membership are encouraged to express their creativity and showcase their dog artistry skills.

Submissions must feature a photo or painting of a dog and should celebrate the YKC's upcoming 40th anniversary, incorporating one of the below three themes:

- **Best Portrait of a Dog** – create an imaginative portrait of your dog/dogs or a dog you love
- **Dogs Through the Decades** – illustrate the evolving relationship between young people and dogs over the past 40 years
- **Heartwarming Moments** – illustrate the emotional impact and connection between a

young person and their dog that showcases their bond

This year's judging panel will be looking for impactful artwork that meets the brief and showcases the artist's creativity, originality and skill.

The overall winner will receive £80 and four tickets to Crufts 2025; 2nd place will receive £50 and four tickets to Crufts 2025; while 3rd place will receive £30 and four tickets to Crufts 2025.

YKC members have until Friday 31 January 2025 to submit their entries. The images should be portrait only, and no bigger than 10MB, in JPEG format and no smaller than 600x600 pixels.

Further information on the competition and how to enter can be found by visiting [thekennelclub.org.uk/ykartistoftheyear](https://www.thekennelclub.org.uk/ykartistoftheyear)

Events



Important message regarding awards gained at all licensed events

We would like to apologise that due to the operational issues currently being experienced by The Kennel Club, competitors at forthcoming licensed events will experience a delay on the issue of awards by our office. However, we would like to remind competitors that it is permitted to enter events where eligibility is dependent upon awards and/or titles which are pending confirmation, e.g. champion stakes. Any disputes regarding eligibility will be dealt with subsequently.

Any queries please email KCNotifications@thekennelclub.org.uk

We appreciate the patience of competitors and exhibitors.
For more information please see thekennelclub.org.uk/resumptionofevents

DECEMBER

December 1

(CH) Midland & West Of England Great Dane Club Sky Sports Connexion, Ryton On Dunsmore, Coventry, Mr N Morgan, neil99352@gmail.com

(CH) Midland Golden Retriever Club The Kennel Club Building, Miss L Layland, Lesleylayland@yahoo.co.uk

(CH) Notts & Derby District Bull Terrier Club The Postmill Centre, Mrs K Bradley, kerrilbradley@hotmail.com

(CH) South Of England Airedale Terrier Club Hermitage Village Hall, Mrs AW Haly, bobbyhaly@yahoo.co.uk

(CH) Southern Afghan Hound Club The Kennel Club Building, Mrs LIM Busby, wilbus@mac.com

(CH) Whippet Club Of Wales Eastern Leisure Centre, Llanrumney, Cardiff, Mr KJ Rees, kierparkwhippets@icloud.com

(L) Southern Irish Terrier Society The Village Hall (Oakham), Mr Nevill, jnevill@btinternet.com

(O) Bridlington & District Canine Society Beverley Leisure Centre, Flemingate, Beverley, Mrs S Gibson, SylviaGibson33@hotmail.com

(O) Longcoat Chihuahua Club Polesworth Memorial Hall, Mrs SJ Lee, susanlee834@btinternet.com

(O) Maghull & Merseyside Canine Society Sutton Leisure Centre, Sutton, Merseyside, Mr AD Moss, alastair@petparaphernalia.co.uk

(O) Mancunian Boxer Club Lach Dennis Village Hall, Mrs S Jump, boxer@quart.u-net.com

(O) Midland English Setter Society Bearley Village Hall, Mrs MJ Sharples, kanietersetters@gmail.com

(O) North Of England Spaniel Club Bowburn Community Association, Mrs L Nesbitt, lesleyanesbitt@gmail.com

(O) Potteries Staffordshire Bull Terrier Club Betley Village Hall, Mr D McKimm, psbtc_sec01@btinternet.com

(O) Pug Dog Club Mappleborough Green Village Hall, Mr NR Marsh, Heketara23@gmail.com

(O) Toy Dog Society Of Wales Forest Oak Farm, Mr G Thomas, jonsvillepekes@talktalk.net

(O) Woolwich Bexley & District Canine Association, Maidstone Agricultural Hall, Lockmeadow Market, Mr J Swinge, balthazar.pugs@gmail.com

(O/AG) Inspire Agility Moulton College Equestrian Centre, Ms RA Abrahams, ruthabrahams3@hotmail.com

(PO) Coventry & District Gundog Society Sports Connexion, Miss M Morgan, michellejmorgan@gmail.com

December 2

(L) Chichester & District Canine Society Selsey Centre, Mrs N Coe, contact@chichestercaninesociety.co.uk

December 3-8

(CH/WT) North East Counties Working Trials Society Northumberland Canine Centre, Mrs V Hunter, vicky.hunter21@yahoo.co.uk

DECEMBER 7

(CH) Bearded Collie Club Sports Connexion, Miss MJ Sale, maureen.sale2@gmail.com

(CH) British Utility Breeds Association Staffordshire County Showground, Mr GR Davies, glenandmark@live.com

(CH) Cotswold Boxer Club Forest Oak Farm, Mr TN Hutchings, winuwuk@btinternet.com

(CH) German Shepherd Dog Club Of Essex Beechwood Equestrian Centre, Mrs S Rankin, sheila_rankin@btinternet.com

(CH) Irish Setter Breeders Club Kennel Club Building at Stoneleigh Park, Miss J Parsons, jlfurby@aol.com

(CH) Japanese Spitz Club Staffordshire County Showground, Mrs EA Kirton, japspitz1@gmail.com

(CH) London Cocker Spaniel Society Woking Leisure Centre, Woking, Surrey, Mrs SE Warrington, susanzakova@gmail.com

(CH) Midland Shar Pei Club Staffordshire County Showground, Mrs C Jenkins, Jenkins@imzadishar-pei.co.uk

(CH) Northern Tibetan Spaniel Club Staffordshire County Showground, Mr R Lemon, richard.lemon@hotmail.com

(CH/AG) Tunbridge Wells & District Canine Society Hadlow College, Mrs LJ Grinham, linda.grinham777@btinternet.com

(O) Antrim & District Canine Club Amphitheatre Wellness Centre, Northern Ireland, Miss JE Gould, june.gould33@btinternet.com

(O) British Collie Club Overseal Village Hall, Overseal, DE12 6LU, Mrs L Jones, jopiumcollies@gmail.com

(O) Cavalier King Charles Spaniel Club Long Itchington Community Centre CV47 9QP, Mrs K Hampton Lee, secretary@thecavalierclub.co.uk

(O) Exonian Canine Association Exeter Livestock Centre, Devon, Mrs J Kibby, juliekibby1@outlook.com

(O) Irish Setter Breeders Club Kennel Club Building at Stoneleigh Park, Mrs P Lucas, jlfurby@aol.com

(O) Japanese Akita Inu Club Staffordshire County Showground, Mrs A Carter, ash.breezelyn@gmail.com

(O) Maltese Club Baginton Village Hall, Ms G Oliver, secretary@themalteseclub.co.uk

(O) Midland Dachshund Club Whitmore and District Village Hall, Mr D Roberts, daniel@swansford.co.uk

(O) Norfolk Terrier Club of Great Britain Shenstone Village Hall, Miss D Jenkins, kinsridge2@gmail.com

(O) Notts & Derby District Staffordshire Bull Terrier Club Shirland Village Hall, Alfreton, Derbys, Ms HE Reaney, rolenskasbt@gmail.com

(O/AG) Agility Vision Solihull Riding Club, Four Ashes Rd, West Midlands, Mrs A Bailey, agilityvision.alex@gmail.com

(O/AG) Kelluki Agility Priory Equestrian Centre, Frensham, Farnham, Miss S Hatcher, sjhatcher62@hotmail.com

(O/AG) Pawsability World Horse Welfare, Miss S Mosedale, pawsability@outlook.com

(O/OB) Lisburn & District Dog Training Club Mossvale Equestrian Centre, Miss Mulcahy, daisy.liddtc@outlook.com

(P/AG) Wyre (Lancs) Agility Club Myerscough College, Preston, Mrs AM Handley, rachaelbailey1981@gmail.com

(R) Glandore Dog Training Club Of Ulster Donaghadee Community Centre, Miss A Purse, ann.purse@sky.com

DECEMBER 8

(CH) British Samoyed Club Greasley Sports Centre, Mrs TT Lloyd, arianrhod_9@btinternet.com

(CH) Midland Cairn Terrier Club Newstead Village Hall, Notts., Mrs L Firth, linda.firth@sky.com

(CH) Midlands Irish Setter Society Kennel Club Building at Stoneleigh Park, Miss JAC Greenan, Julie.greenan@blueyonder.co.uk

Events

(CH) Southern Flatcoated Retriever Club
Five Rivers Leisure Centre, Hulse Road, Mrs S Tagg,
suzi.tagg@yahoo.co.uk

(CH/AG) Tunbridge Wells & District Canine Society
Hadlow College, Mrs LJ Grinham,
linda.grinham777@btinternet.com

(L) Treharris & District Canine Society
Dowlais Community Centre, Ms L Holt,
treharriscaninetreasurer@gmail.com

(O) Birmingham & Midland Counties Bulldog Club
Baginton Village Hall, Nr Coventry, West Midlands,
Mrs CE Parker, elsieben@sky.com

(O) Bristol & District Dog Club Hutton Moor Leisure
Centre, Mrs J Lovell, pinedown@hotmail.com

(O) Burton On Trent Kennel Association Newark and
Notts Showground, Lincoln Road, Winthorpe,
Mrs J Tune, rottalmarotties@aol.com

(O) Eston & Barnaby Canine Society Eston Sports
Academy, Normanby Road, Middlesborough,
Mr CL Wheeldon, Estonandbarnaby@hotmail.com

(O) Smooth Fox Terrier Association Bulkington
Working Mens Club, Mrs LPJ England,
leeengland24@yahoo.com

(O) Southern Flatcoated Retriever Club Five Rivers
Leisure Centre, Hulse Road, Mrs S Tagg,
suzi.tagg@yahoo.co.uk

(O/AG) Kelluki Agility Priory Equestrian Centre,
Frensham, Farnham, Miss S Hatcher,
sjhatcher62@hotmail.com

(O/AG) Kingdom Of Fife Agility Club Scottish
National Equestrian Centre, Oatridge, West Lothian,
Ms CS Hair, caroline@carolinehair.com

(O/AG) Pawsability World Horse Welfare,
Miss S Mosedale, pawsability@outlook.com

(O/AG) T/A Agility World Horse Welfare 1 Ada Cole
Avenue, Mr T Ryman, tonyryman3011@gmail.com

(O/OB) Downlands Obedience Group
Plumpton College, Lewes, Mrs RJ Cantrell,
downlandsobediencegroup@gmail.com

(R) Glandore Dog Training Club Of Ulster
Donaghadee Community Centre, Miss A Purse,
ann.purse@sky.com

DECEMBER 11

(O/AG) Phase Purple Agility Training
West Park Equestrian Centre, Mrs F Nemeth,
fayeshetlandpony1@hotmail.co.uk

DECEMBER 12

(O) Kerry Blue Terrier Association Staffordshire
County Showground, Mrs Phillips,
brandynkerries@sky.com

(O/AG) PointZero Unicorn Equestrian Centre,
Mr A Clarke

DECEMBER 12-15

(CH) Ladies Kennel Association Bingley Hall,
Stafford County Showground Ltd, Stafford,
Ms G Marley, secretaryka@btinternet.com

DECEMBER 13

(O/AG) Dog Sports Derby Dog Sports Derby,
Miss L Chudleigh, laura.chudleigh1@gmail.com

DECEMBER 14

(O/AG) Agility Nuts Arena UK Ltd, Mr P Sensky,
paul@sensky.co.uk

(O/AG) Do Believe Dog Training World Horse Welfare
1 Ada Cole Avenue, Mrs RJ Radbourne,

(O/AG) Dog Sports Derby Dog Sports Derby,
Miss L Chudleigh, laura.chudleigh1@gmail.com

(O/AG) Frittenden Dog Agility Frittenden Dog Agility,
Mrs J Linch, janandianlinch@pobox.com

(O/AG) Phase Purple Agility Training Croft Top Farm,
Mrs F Nemeth, fayeshetlandpony1@hotmail.co.uk

DECEMBER 15

(L) Huddersfield & District Canine Association
The Elms, Mrs J Jackson, hawokroydwss@gmail.com

(O/AG) Frittenden Dog Agility Frittenden Dog Agility,
Mrs J Linch, janandianlinch@pobox.com

(O/AG) Phase Purple Agility Training Croft Top Farm,
Mrs F Nemeth, fayeshetlandpony1@hotmail.co.uk

DECEMBER 21

(L) Swindon & District Canine Society
Grange Drive Community Centre, Mrs K Stirr,
grakar_gundogs@yahoo.co.uk

(L) Tweedmouth Canine Society Watson Memorial
Hall, Lucker, Northumberland, Mrs PM Cox,
tweedmouthcs@gmail.com

(O) Birmingham & District Toy Dog Society Sports
Connexion, Mrs SJ Twigg, Stefyl87@hotmail.com

(O) Papillon (Butterfly Dog) Club Sports Connexion,
Mrs C Headley, chrisheadley70@gmail.com

(O/AG) KS Training The Grange Equestrian Centre,
Miss K Stickney, kathrynstickney@btinternet.com

DECEMBER 21-22

(O/AG) Pure Agility Dog Sports Derby, Miss L Field,
laurafield22@yahoo.co.uk

DECEMBER 22

(L) Chepstow & District Canine Society
Millenium Hall Garndiffiath, Mrs A Baker,
angie.mischran1@gmail.com

(L) Penrith & District Canine Society Low Hesketh
Village Hall, Low Hesketh, Carlisle, Mrs J Power,
powerjane20@gmail.com

(O) East Of England Great Dane Club Newark &
Notts Showground, Winthorpe, Newark, Mrs J King,
eppwooddanes@gmail.com

(O) Oakengates & District Canine Society Sky
Sports Connexion, Ryton On Dunsmore, Coventry,
Ms S Rose, sue@kavacanne.co.uk

(O) South Of England Gundog Club Lockmeadow
Market, Baker Road, Maidstone, Kent, Ms Daniela
Pinto Tranquada, armeiro@ntlworld.com

(O) Totnes & District Canine Society Sedgemoor
Auction Centre, Somerset, Mr P Boot,
barotoba@btinternet.com

(PO) Boston & District Canine Society
Newark & Notts Showground, Winthorpe, Newark,
Miss Tarabad, Bostondcs@hotmail.com

(PO) Darwin Canine Society Leigh Leisure Centre,
Miss CA Harwood, theharwoodsminearts@gmail.com

(PO) Eston & Barnaby Canine Society Temple Park
Leisure Centre, John Reid Rd, South Shields,
Miss Heslop, Estonandbarnaby@hotmail.com

DECEMBER 27

(O/AG) Dog Sports Derby Dog Sports Derby,
Miss L Chudleigh, laura.chudleigh1@gmail.com

DECEMBER 28

(CH) Northern Bulldog Club Staveley Sports Centre,
Mr SP Bragger, prideofbully@hotmail.com

(L) Leominster Canine Society Hopelands Village
Hall, Gadbridge Road, Weobley, Mr J Lemon,
johnlemon@gmx.co.uk

(L) Yeovil & District Canine Society, Keinton
Mandeville Community Hall, Miss E Jackson,
yeovildcs@outlook.com

(O) Ashbourne & District Canine Society
The Kennel Club Building, Mrs L Challands,
lea_challal@hotmail.co.uk

(O) Manchester Terrier Association Kennel Club
Building at Stoneleigh Park, Ms M Davies,
wystry@hotmail.com

(O) Trent Boxer Club Farndon Memorial Hall,
Mrs T Booth, t.booth73@ntlworld.com

(O) Wirral Kennel Association Neston Recreation
Center, Mrs C Gill, jocagil@hotmail.co.uk

(O/AG) Country Shows Agility Warwickshire college,
Mr L Taylor, rover.pro@outlook.com

(O/AG) CrookedOak Agility Greenlands Livery
Centre, Wreay, Carlisle, Cumbria, Mr S Richardson,

(O/AG) Kelluki Agility Merrist Wood College,
Miss S Hatcher, sjhatcher62@hotmail.com

(R) Rally Dogs Croft Top Farm, Mrs J Barrett,
rally@fitdogs.ltd.uk

DECEMBER 29

(L) Yeovil & District Canine Society Keinton
Mandeville Village Hall, Miss E Jackson,
yeovildcs@outlook.com

(O/AG) CrookedOak Agility Greenlands Livery
Centre, Wreay, Carlisle, Cumbria, Mr S Richardson,

(O/AG) Glandore Dog Training Club Of Ulster
Laurel View Equestrian Centre, Miss A Purse,
ann.purse@sky.com

(O/AG) Kelluki Agility Merrist Wood College,
Miss S Hatcher, sjhatcher62@hotmail.com

(O/AG) Ogilvie Dogs Ogilvie Dogs, Miss S Pratley

DECEMBER 29-30

(O) Luton Canine Association Kennel Club Building
at Stoneleigh Park, Mr EL Ryan, cavalli@live.ie

DECEMBER 30

(O/OB) Newton Heath Dog Training Club Croft Top
Farm, Mrs JA Donohue, cherylbuffey@icloud.com

JANUARY

JANUARY 1

(O) Coventry Ladies Kennel Society Sports Connexion,
Mrs AE Defaye, fedayehippets@gmail.com

JANUARY 4

**(O) Eastern Counties Cavalier King Charles Spaniel
Society** Great Barford Village Hall, Mr K Arrowsmith,
secretary@easterncavalier.co.uk

(O) South Wales Corgi Club Penyrheol Community
Centre, Mrs W Rees, alan.stadwen@btinternet.com

(O) West Of England Labrador Retriever Club
Woolavington Village Hall, Mrs L Kent,
lucy_kent_0209@hotmail.com

(O/AG) Kelluki Agility Priory Equestrian Centre,
Frensham, Farnham, Miss S Hatcher,
sjhatcher62@hotmail.com

Events

(O/AG) Ogilvie Dogs Ogilvie Dogs, Miss S Pratley

(O/AG) Pawsability World Horse Welfare, Miss S Mosedale, pawsability@outlook.com

JANUARY 4-5

(O) Taunton & District Canine Association Wellsprings Leisure Centre, Mrs LP Creech, chrysdawson123@hotmail.co.uk

(PO) Lichfield Canine Society Staffordshire County Showground, Mr N Marley, lichfieldsecretary@hotmail.com

JANUARY 5

(CH) Southern Dachshund Association Woking Leisure Centre, Woking, Surrey, Mrs W Starkey, wendygms@yahoo.co.uk

(L) Southampton & District Canine Association Wickham Community Centre, Mrs AJ Betts, amandabetts@btconnect.com

(O) Golden Retriever Club Of Northumbria Bowburn Community Association, Mrs Greensmith, patriciatrotter@btinternet.com

(O) Northern Counties Shetland Sheepdog Club West Cornforth Community Association, Miss J Clegam, jayne_clegam@hotmail.com

(O) Worcester & Malvern Canine Society Kennel Club Building at Stoneleigh Park, Ms M Sargent, marionsargent.tegwani@gmail.com

(O/AG) Kelluki Agility Priory Equestrian Centre, Frensham, Farnham, Miss S Hatcher, sjhatcher62@hotmail.com

(O/AG) Ogilvie Dogs Ogilvie Dogs, Miss S Pratley

(O/AG) Pawsability World Horse Welfare, Miss S Mosedale, pawsability@outlook.com

(PO) Consett Canine Society Temple Park Leisure Centre, John Reid Rd, South Shields, Mrs L Chesterfield, lynneandcolinchesterfield@btinternet.com

JANUARY 11

(CH) Southern Counties Beagle Club Fairlands Community Centre, Miss J Whitton, secretary@southerncountiesbeagleclub.co.uk

(O) Coalville & District Canine Society Kennel Club Building at Stoneleigh Park, Mrs Hopewell, siwhingrin@icloud.com

(O) Northern Cavalier King Charles Spaniel Society Thorpe Willoughby Village Hall, Miss AB Walker, nckcss.sec@virginmedia.com

(O) Wealdstone & Northolt Canine Society Maidstone Market Hall, Mrs M Flack, margaretmflack@btinternet.com

(O/AG) Agility Vision Solihull Riding Club, Four Ashes Rd, West Midlands, Mrs A Bailey, agilityvision.alex@gmail.com

(O/AG) Wilmslow Dog Training Club Myerscough College, Bilsborrow, Preston, Lancs, Mrs C Snowdon, wilmslowdtc@hotmail.co.uk

(R) Glandore Dog Training Club Of Ulster Redburn Community Centre 8 Ardnagreena Gardens, Miss A Purse, ann.purse@sky.com

JANUARY 11-12

(O) Wiveliscombe & District Canine Society Wellsprings Leisure Centre, Mr MJ Masters, wiveymembers@gmail.com

JANUARY 12

(CH) Irish Setter Club Of Wales Stoneleigh Park, Mrs R Jones, irsj@hotmail.com

(CH) London Bulldog Society Bracknell Sports and Leisure Centre, Bracknell, Berkshire, Miss S Jay, londonbulldogsocietysecretary@btinternet.com

(CH) Pomeranian Club Markfield Community and Recreation Club, Mrs JA Pike, thepomeranianclub@hotmail.co.uk

(L) Isle Of Man Canine Society Jurby Parish Hall, Mrs BS Waggett, b.waggett@manx.net

(O) Ashford Faversham & District Canine Society Maidstone Market Hall, Ms CL Boggia, boughtongreys@gmail.com

(O) Pomeranian Club Markfield Community and Recreation Club, Mrs JA Pike, thepomeranianclub@hotmail.co.uk

(O/AG) PointZero Willoughby Park, formerly Onley Grounds Equestrian complex, Mr A Clarke,

(O/OB) Elm Park Dog Training Club Cowdray Hall, West Thurrock, Essex, Mrs J Appleton, appleton.julie@btinternet.com

(PO) Darlington & District Canine Society Temple Park Leisure Centre, John Reid Rd, South Shields, Mrs Hancock, hancocktricia317@gmail.com

(PO) Goyt Valley Gundog Society Leigh Sports Village, Mrs C Perkins, colette.p@hotmail.co.uk

JANUARY 16

(CH) Lancashire & Cheshire English Springer Spaniel Club Staffordshire County Showground, Mrs L McCourt, woodspa20@gmail.com

(O) Large Munsterlander Club Staffordshire County Showground, Mr Graham, secretary@largemunsterlanderclub.co.uk

JANUARY 16-19

(CH) Manchester Dog Show Society Staffordshire County Showground, Mr PJ Harding, hardingproperties653@gmail.com

JANUARY 17

(CH) Northern Bullmastiff Club Staffordshire County Showground, Mr G Shirt, secretary@thenorthernbullmastiffclub.com

(CH) Southern Dogue De Bordeaux Society Staffordshire County Showground, Mrs TL Harrison, cerisierkennels@yahoo.co.uk

(CH) West Lancs French Bulldog Club Staffordshire County Showground, Miss A Wildman, annwildman10@hotmail.com

JANUARY 18

(CH) Lancashire, Yorkshire & Cheshire Basset Hound Club Staffordshire County Showground, Mrs M Scott, Moandjim1@hotmail.co.uk

(CH) Rhodesian Ridgeback Club Of Great Britain Staffordshire County Showground, Miss JR Cyprien, secretary@rrcgb.co.uk

(O/AG) Frittenden Dog Agility Frittenden Dog Agility, Mrs J Linch, janandianlinch@pobox.com

(O/AG) Valley Farm Agility Club Otley College Grounds, Ipswich, Suffolk, Mr N Rudd, vfarmnigel@yahoo.co.uk

(P/HTM) Canine Freestyle GB Forest Oak Farm, Miss A Briggs, free-paws@talktalk.net

JANUARY 19

(O) Midlands Border Collie Club The Kennel Club Building, Miss L Wiltshire, laura_wiltshire@sky.com

(O) Northern Griffon Bruxellois Club Staffordshire County Showground, Mrs MJ Cook, margaret457@btinternet.com

(O) Northern Pug Dog Club Staffordshire County Showground, Miss M Cowie, npdcsecretary@gmail.com

(O) Shetland Sheepdog Club Of Wales Beaufort Centre, Mr MG Light, mike.light@btinternet.com

(O/AG) Frittenden Dog Agility Frittenden Dog Agility, Mrs J Linch, janandianlinch@pobox.com

(O/AG) Valley Farm Agility Club Otley College Grounds, Ipswich, Suffolk, Mr N Rudd, vfarmnigel@yahoo.co.uk

(O/OB) Eastleigh & District Dog Training Club Nedlo Agility, Mrs KF Case, kathleen.case@btinternet.com

(R) United Spaniel Association Derby College Equestrian Centre, Ms M Sargent, marionsargent.tegwani@gmail.com

JANUARY 20

(O/AG) Dog Sports Derby Dog Sports Derby, Miss L Chudleigh, laura.chudleigh@gmail.com

JANUARY 22

(O/AG) Ogilvie Dogs Ogilvie Dogs, Miss S Pratley

JANUARY 24-26

(O/WT) Essex Working Trials Society Danbury Park Farm, Chelmsford, Essex, Mrs PJ Bann, P.bann@hotmail.com

JANUARY 25

(L) Cheviot & Berwick Canine Society Glendale Middle School, Wooler, Northumberland, Mrs L Nesbitt, lesleyanesbitt@gmail.com

(L) Northern Counties Whippet Club Grimsargh Village Hall, Ms M Lister, mlister6798@gmail.com

(L) Whippet Club Benson Parish Hall, Mrs ML Anderson, enquiries@thewhippetclub.com

(O) Keeshond Club Roade Village Hall, Miss GM Clark, joanamiles17@gmail.com

(O) Newton Abbot & South Devon Canine Society Matford Centre, Mrs D Fenn, deb.fenn@btinternet.com

(O) Northern Dog Club Eston Sports Academy, Normanby Road, Middlesbrough, Mr D Pearson, darrenpearson2011@live.co.uk

(O) Redditch & District Canine Society Kennel Club Building at Stoneleigh Park, Mrs P Jameson, pam.jameson@gmx.co.uk

(O) Yorkshire, Lancashire & Cheshire Border Terrier Club Thorpe Willoughby Village Hall, Mrs T Green, yorkslancls@outlook.com

(O/AG) Agility Nuts Arena UK Ltd, Mr P Sensky, paul@sensky.co.uk

(O/AG) Inspire Agility Moulton College Equestrian Centre, Ms RA Abrahams, ruthabrahams3@hotmail.com

(O/AG) Pure Agility Dog Sports Derby, Miss L Field, laurafield22@yahoo.co.uk

(O/OB) Wirral Alsatian Training Society Kelsall Equestrian & Conference Centre, Ms N Fildes-Moss, watsmembership.2022@outlook.com

Events

JANUARY 26

(CH) Poodle Club Bracknell Sports and Leisure Centre, Bracknell, Berkshire, Mrs S Pine-Haynes, thepoodleclub@hotmail.co.uk

(CH) West Of England Cocker Spaniel Club Cricklade Leisure Centre, Mr B McCabe-Bell, bryanmccabe@gmail.com

(L) Wilmslow & Alderley Canine Society Chelford Village Hall, Knutford Rd, Lady CR Walsh, charlotte.walsh@msn.com

(O) Border Counties Gundog Club Harrison & Hetherington Exhibition Centre, Mrs DK Douglas, jane.e.maclachlan@sky.com

(O) Cardiff Canine Society Merthyr Tydfil Leisure Village, Mr MW Sanders, martin.dog@hotmail.co.uk

(O) East Midlands Staffordshire Bull Terrier Club Overseal Village Hall, Overseal, DE12 6LU, Mr J Rogers, berrystock@hotmail.com

(O) Heywood & Radcliffe Canine Society Sutton Leisure Centre, Sutton, Merseyside, Mrs N Hall, john.johnjo@hotmail.co.uk

(O) Irish Wolfhound Society Sports Connexion, Mrs J Williams, joan@mail.ip-technology.com

(O) Kent, Surrey & Sussex Labrador Retriever Club Bletchingley Village Hall, Mrs A Scutcher, winsleywood@gmail.com

(O) Midland Chihuahua Club Hood Park Leisure Centre, Ashby De La Zouch, Mrs LD Ison, lynpix51@yahoo.co.uk

(O) South Eastern Welsh Springer Spaniel Club Cobham Village Hall, Mrs TJ Bennett, tracy.sewssc@gmail.com

(O) South Of England Irish Setter Club The Hamworthy Club, Mrs PM Harris, canford.print@live.co.uk

(O) Stoke On Trent & District Gundog Club Biddulph Valley Leisure Centre, Mr G Hart, grahamhart595@btinternet.com

(O) Three Ridings Labrador Club Thorpe Willoughby Village Hall, Mrs W Southwell, teazledown@btconnect.com

(O) Wellingborough & District Canine Society Kennel Club Building at Stoneleigh Park, Miss A Mar-Garrison, annem65@virginmedia.com

(O/AG) Do Believe Dog Training World Horse Welfare (Penny Farm), Mrs RJ Radbourne,

(O/AG) Inspire Agility Moulton College Equestrian Centre, Ms RA Abrahams, ruthabrahams3@hotmail.com

(O/AG) KS Training The Grange Equestrian Centre, Miss K Stickney, kathrynstickney@btinternet.com

(O/AG) Pure Agility Dog Sports Derby, Miss L Field, laurafield22@yahoo.co.uk

(O/OB) Downlands Obedience Group Plumpton College, Ditchling Road, Plumpton, Mrs RJ Cantrell, downlandsobediencegroup@gmail.com

JANUARY 29

(O/AG) Dog Sports Derby Dog Sports Derby, Miss L Chudleigh, laura.chudleigh1@gmail.com

JANUARY 31-2

(O/WT) Southern Alsatian Training Society High Drive Dogsport Club, Mrs SJ Carter, sharoncarter01@gmail.com

FEBRUARY

FEBRUARY 1

(CH) North Of England Rottweiler Club Thompson House Equestrian Centre, Mr JR Mackenzie, j.r.mackenzie@btinternet.com

(CH) Northern Counties Shih Tzu Club Thorpe Willoughby Village Hall, Mr T Crossland, trevorcross25@gmail.com

(CH) Parti-Coloured Cocker Spaniel Club Kennel Club Building at Stoneleigh Park, Mrs GE Pearce-Gudger, gjllpearcegudger@yahoo.co.uk

(O) Bloodhound Club Baginton Village Hall, Miss S Clark, secretary@thebloodhoundclub.com

(O) British Dalmatian Club Kennel Club Building at Stoneleigh Park, Mrs J Hopkin, juliehopkin31@btinternet.com

(O) Lancashire & Cheshire Dachshund Association Gladstone Village Hall, Mrs D Kirkwood-Emery, dachs@helydon.co.uk

(O) London Reform Pekingese Association New Haw Community Centre, Miss JA Petters, jaxpetters@gmail.com

(O) Northern Counties Shih Tzu Club Thorpe Willoughby Village Hall, Mr T Crossland, trevorcross25@gmail.com

(O) South Of England Pomeranian Club Steventon Village Hall, Steventon, Oxford, Mrs AJ Orchard, manatek@msn.com

(O) Wigan & District Canine Society Sutton Leisure Centre, Sutton, Merseyside, Miss E Hobson, emmahobson15@talktalk.net

FEBRUARY 1-2

(PO) Isle Of Ely Canine Societ, Oakridge Arena, Mr C Pack, Lbengy@aol.com

FEBRUARY 2

(CH) Labrador Retriever Club Of Wales Forest Oak Farm, Mrs M Barker, secretary@labclubofwales.co.uk

(CH) Midlands Irish Setter Society Kennel Club Building at Stoneleigh Park, Miss JAC Greenan, Julie.greenan@blueyonder.co.uk

(L) North West Labrador Retriever Club Leigh Sports Village, Miss GA Oulton, oulsmilabradors@hotmail.co.uk

(L) Salisbury & South Wilts Canine Society Sparsholt College Equine Centre Indoor Arena, Mrs C Prowse, contoul@btinternet.com

(O) East Kent Canine Society Lockmeadow Market, Mrs C Sharp, affilato-spinoni@virginmedia.com

(O) Merseyside Boxer Club Whiston Town Hall, Mrs M McArdle, s.mcardle05@gmail.com

(O) Midland Border Terrier Club Weston Village Hall, Mr B Wright, bob@dabvalves.co.uk

(O) North East Bull Terrier Club Bowburn Community Association, Mrs S Wheatley, northeastbullterrierclub1904@gmail.com

(O) North West Staffordshire Bull Terrier Club Longridge Civic Hall, Ms C Crossman, crossmanclaire@yahoo.com

(O) Northumbria & Mercia Poodle Club Cornforth Community Centre, Mr R McAuley, ron.mcauley@yahoo.com

(O) Stockport Canine Society Be Active Urmston, Mrs S Woodhouse, halbadier@hotmail.com

(O) Utility Breeds Association Of Wales

Pontypool Active Living Centre, Mrs L Williams, ubawsec@gmail.com

(O/AG) Dartmoor Dog Training Club The Grange Equestrian Centre, Mrs A Hampshire, secretary@dartmoordtc.co.uk

(O/AG) Kelluki Agility Merrist Wood College, Miss S Hatcher, sjhatcher62@hotmail.com

(PO) Merseyside Gundog Club Leigh Sports Village, Mrs A Moss, ann@petparaphernalia.co.uk

FEBRUARY 8

(CH) Manchester & Counties Bulldog Club

Holiday Inn Runcorn, Mrs E Simpson, jackarhys-bulldogs@hotmail.co.uk

(CH) Midland Boxer Club Kennel Club Building at Stoneleigh Park, Mr GK Mullis, idleforde@aol.com

(CH) Midland Collie Club Kennel Club Building at Stoneleigh Park, Mrs H Walder, secretary@midlandcollieclub.co.uk

(O) Affenpinscher Club Asfordby Amateurs Sports Club, Hoby, Mrs AJ Teasdale, tonsarne@outlook.com

(O) Curly Coated Retriever Club Tomlinson's Boarding Kennels, Markfield, Miss VJ Hayes, vickicrcsecretary@gmail.com

(O) Ilfracombe & District Canine Society

Mattford Centre, Mrs D Stanton, denisestanton.ds@googlemail.com

(O) Midland & West Of England Great Dane Club Sports Connexion, Mr N Morgan, neil99352@gmail.com

(O) Midland Boxer Club Kennel Club Building at Stoneleigh Park, Mr GK Mullis, idleforde@aol.com

(O) North Wales Cocker Spaniel Club Trefnant Village Hall & Memorial Field, Miss A Hughes, ann.hughes2@talktalk.net

(O) Northern & Midland Counties Beagle Club

Shirland Village Hall, Shirland, Nr Alfreton, Mrs CM Walker, nmcbcc@talktalk.net

(O) South Wales Kennel Association Merthyr Tydfil Leisure Village, Miss BEM Croucher, bridgetcroucher01@gmail.com

(O) South West Durham Canine Society Temple Park Leisure Centre, John Reid Rd, South Shields, Mrs KL Ambler, judith.robinson6@btinternet.com

(O) Western Staffordshire Bull Terrier Society

Mark Village Hall, Mrs L Emery, secretarywsbts@outlook.com

(O) Yorkshire Shetland Sheepdog Club

Grenoside Community Hall, Mrs HM Bendelow, ysschonsec@gmail.com

(O) Yorkshire Terrier Club Of South Wales

Craig Community Hall, Mrs P Evans, Yorkiesytscw22@yahoo.com

(O/AG) Elystari Agility

Golden Cross Equestrian Centre, Nr Hailsham, Mrs KD Milham,

(O/AG) Inspire Agility

Moreton Morrell College of Agriculture, Moreton, Morrell, Ms RA Abrahams, ruthabrahams3@hotmail.com

(O/AG) Pawsability

World Horse Welfare, Miss S Mosedale, pawsability@outlook.com

FEBRUARY 8-9

(O/AG) Ogilvie Dogs Ogilvie Dogs, Miss S Pratley

Events

FEBRUARY 9

- (CH) Golden Retriever Club Of Wales** Forest Oak Farm, Mrs K Thorne, grcwales@hotmail.com
- (CH) Midland English Setter Society** Kennel Club Building at Stoneleigh Park, Mrs MJ Sharples, kanlettersetters@gmail.com
- (CH) Miniature Dachshund Club** Sports Connexion, Mrs CL West, west.tina@hotmail.co.uk
- (L) Macclesfield & District Canine Society** Chelford Village Hall, Knutford Rd, Lady CR Walsh, charlotte.walsh@msn.com
- (L) Scarborough & District Canine Association** Ganton Village Hall, Ganton, Nr Scarborough, Mr D Hick, datiros@outlook.com
- (O) Barrow & District Kennel Association** Kendal Leisure Centre Kendal, Mrs J Graham, nyliram.gundogs@gmail.com
- (O) Birmingham Afghan Hound Club** Kennel Club Building at Stoneleigh Park, Mrs C Cheesman, secretary@bahc.org.uk
- (O) Giant Schnauzer Club** Tomlinsons Boarding Kennels, Mrs A Kidd, gscsecretary2020@gmail.com
- (O) Humberside Cavalier King Charles Spaniel Club** Dunham on Trent Village Hall / Field, Mrs AJ Sedgbeer, sedgbeer53@gmail.com
- (O) Lancashire Heeler Club** Grimsargh Village Hall, Mrs EA Thwaite, thelancashireheelerclub@gmail.com
- (O) Midland Counties Airedale Terrier Club** Overseal Village Hall, Woodville Road, Overseal, Miss J Martin, toba73@supanet.com
- (O) Pennine & Yorkshire Welsh Corgi Association** Cabus Village Hall, Preston, Miss TJ Irving, twinancorgis@aol.com
- (O) Portsmouth & Southsea Kennel Association** Havant Leisure Centre, Civic Centre Road, Havant, Mrs J Gorman, ejgorman@virginmedia.com
- (O) Potteries Staffordshire Bull Terrier Club** Betley Village Hall, Mr D McKimm, psbtc_sec01@btinternet.com
- (O) Welsh Corgi League** Cabus Village Hall, Preston, Mrs M Hoggarth, wclexsec10@aol.com
- (O/AG) Elystari Agility** Golden Cross Equestrian Centre, Nr Hailsham, Mrs KD Milham,
- (O/AG) Inspire Agility** Moreton Morrell College of Agriculture, Moreton, Morrell, Ms RA Abrahams, ruthabrahams3@hotmail.com
- (O/AG) Pawsability** World Horse Welfare, Miss S Mosedale, pawsability@outlook.com
- (O/HTM) South of England Heelwork to Music Club** Oxshott Village Centre, Mrs AJ Wilde, alison@champwilde.f9.co.uk
- (O/OB) Eastleigh & District Dog Training Club** Nedlo Agility, Mrs KF Case, kathleen.case@btinternet.com
- (PO) Ashington & District Canine Society** Temple Park Leisure Centre, John Reid Rd, South Shields, Mrs J Purves, junepurves9@gmail.com
- (PO) Sporting Terrier Association Of Yorkshire** Thrybergh Academy, Mr T West, thomas@tomlyndon.co.uk
- (PO) Terrier Club Of South Wales** Monmouth School Sports Hall, Miss R Bevan, rbevan90@hotmail.co.uk

FEBRUARY 11-16

- (CH/WT) ASPADS Working Trials Society** Horspath Village Hall, Horspath, Oxford, Mrs JM Meekings, judy@aspads.co.uk

FEBRUARY 12

- (O) United Retriever Club** Kennel Club Building at Stoneleigh Park, Mrs A Scutcher, winsleywood@gmail.com
- (O/AG) Dog Sports Derby** Dog Sports Derby, Miss L Chudleigh, laura.chudleigh1@gmail.com

FEBRUARY 13

- (O/AG) Dog Sports Derby** Dog Sports Derby, Miss L Chudleigh, laura.chudleigh1@gmail.com

FEBRUARY 14

- (L) Loughborough & District Canine Society** The Village Hall, Kegworth, Mrs MS Ward, zabarettsward@btinternet.com

FEBRUARY 14-16

- (O/WT) North East Counties Working Trials Society** Northumberland Canine Centre, Mrs V Hunter, vicky.hunter21@yahoo.co.uk

FEBRUARY 15

- (CH) Home Counties Cocker Spaniel Club** Sports Connexion, Mrs E Thomas, elaine@claramand-cockers.co.uk
- (CH) Mastiff Association** Tomlinson's Boarding Kennels, Markfield, Mrs E Norris, elaine@hexnorden.co.uk
- (CH) Southern Miniature Bull Terrier Club** Royal Court Hotel, Keresley, Coventry, Mrs ME Hughes, maureengraymorhughes@gmail.com
- (O) British Boxer Club** Drayton Village Hall, Mrs LJW Clark, lauradtp@aol.com
- (O) British Rottweiler Association** Roade Village & Playing Field, Mrs L Whitmore, lhampson66@btinternet.com
- (O) Bull Terrier Club** Royal Court Hotel, Keresley, Coventry, Mrs TA Westwood, secretary@thebullterrierclub.co.uk

- (O) Bulldog Club Of Wales** St Patricks Social Club, Mr J Lane, anjefanbulldogs@ntlworld.com

- (O) Camborne Redruth Canine Society** Royal Cornwall Show Ground, Wade Bridge, Mrs LJ Hosking, tarquas@yahoo.co.uk

- (O) Cotswold Boxer Club** Drayton Village Hall, Lockway, Drayton, Abingdon, OX14 4LQ, Mr TN Hutchings, winuwuk@btinternet.com

- (O) North Of England Scottish Terrier Club** Grenoside Community Hall, Mrs C Haigh, christinehaigh52@gmail.com

- (O) Northumberland & Durham Collie Club** Trimdon Village Hall (Hallgath Rd), Mr JA Blackburn, blackburn1994@hotmail.co.uk

- (O) Queens Island Canine Club** Connell Hill Equestrian Centre, Mrs AA Brown, alexaabrown47@gmail.com

- (O) South Of England Papillon Club** Chieveley Village Hall & Recreational Centre, Rev K Wells, Kirsty@metamorphicpapillons.com

- (O) West Pennine Pug Dog Club** Chelford Village Hall, Knutford Rd, Mrs L Mallinson, lucy.c.hill@sky.com

- (O/AG) Agility Vision** Solihull Riding Club, Four Ashes Rd, West Midlands, Mrs A Bailey, agilityvision.alex@gmail.com

- (O/AG) Frittenden Dog Agility** Frittenden Dog Agility, Mrs J Linch, janandianlinch@pobox.com

- (O/AG) Kelluki Agility** Priory Equestrian Centre, Frensham, Farnham, Miss S Hatcher, sjhatcher62@hotmail.com

- (O/AG) Valley Farm Agility Club** Otley College Grounds, Ipswich, Suffolk, Mr N Rudd, vfarmnigel@yahoo.co.uk

- (PO) Dukeries [Notts] Gundog Club** Oakridge Arena, Dr R Suchett-Kaye, cadet22@hotmail.co.uk

- (PO) National Working & Pastoral Breeds Society** Sports Connexion, Miss L Mottram, lucymottram@icloud.com

- (PO) West Midland Terrier Society** Kennel Club Building at Stoneleigh Park, Ms M Davies, wystry@hotmail.com

FEBRUARY 16

- (CH) British Bullmastiff League** Holiday Inn Runcorn, Miss C Thomas, carolyne.thomas@yahoo.co.uk

- (CH) Midland Counties Poodle Club** Sports Connexion, Mrs B Cherry, Shanandi@btinternet.com

- (CH) Northumberland & Durham Labrador Retriever Club** Haltwhistle Leisure Centre, Ms C Mitchell, ndlabclub@gmail.com

- (CH) Scottish Shetland Sheepdog Club** Lawrie & Symington, Ms A Smith, smithanne628@gmail.com

- (CH) Shih Tzu Club** Kennel Club Building at Stoneleigh Park, Mrs PJ Gregory, secretary@theshihtzuclub.co.uk

- (CH) South West Whippet Club** Wellsprings Leisure Centre, Mrs AC Prowse, freehamletwhippet@btinternet.com

- (O) Cleveland Dog Society** Eston Sports Academy, Normanby Road, Middlesbrough, Miss AB Walker, alison.walker20@ntlworld.com

- (O) Cocker Spaniel Club Of Lancashire** Swinton Masonic Hall, Hospital Rd, Swinton, Mrs D Grice, kynacockers@blueyonder.co.uk

- (O) Gloucester & District Canine Society** Avon Hall, Three Counties Showground, Malvern, Worcs., Mrs CM Stangroom, stangroomcindy0@gmail.com

- (O) Longcoat Chihuahua Club** Polesworth Memorial Hall, Mrs SJ Lee, susanlee834@btinternet.com

- (O) Midland Chow Chow Club** Nether Whitacre Village Hall, Coleshill, Warwicks, Mrs P Godber, Lechan.stepam@outlook.com

- (O) North Of England Keeshond Club** Netherton Village Hall, Mrs AJ Stephenson, showsecretary.noekc@gmail.com

- (O) Northern Counties Dachshund Association** Coronation Hall, Old Station Yard, Milby Boroughbridge, Mrs L Bell, tolberg-gsd@tiscali.co.uk

- (O) South West Welsh Corgi Club** Pucklechurch Community Centre BS16 9RH, Mrs C Turner, cottonfields@mypostoffice.co.uk

- (O) St Helens & District Canine Society** Sutton Leisure Centre, Sutton, Merseyside, Mrs M Grindley, johnpurnell51@gmail.com

- (O) Terrier Club Of Devon And Cornwall** Culm Valley Sports Centre, Cullompton, Mrs JP Rundle, jean.rundle46@btinternet.com

- (O/AG) Down District Dog Training Club** Tullymurray Equestrian Centre, Dr JE Davis, jedavis45@hotmail.com

- (O/AG) Frittenden Dog Agility** Frittenden Dog Agility, Mrs J Linch, janandianlinch@pobox.com

Events

(O/AG) Kelluki Agility Priory Equestrian Centre, Frensham, Farnham, Miss S Hatcher, sjhatcher62@hotmail.com

(O/AG) Valley Farm Agility Club Otley College Grounds, Ipswich, Suffolk, Mr N Rudd, vfarmnigel@yahoo.co.uk

FEBRUARY 20-23

(CH/WT) North West Working Trials Society Lower Withington Parish Hall SK11 9DX, Mrs R Smyth, secretaryNWWTS@gmail.com

FEBRUARY 21-23

(O/WT) Surrey Dog Training Society Oakwood Hill Village Hall, S Ford, jennifer.staves@gmail.com

FEBRUARY 22

(CH) British Manchester Terrier Club Shenstone Village Hall, Ms Owczarek, secretary@manchester-terrier-club.co.uk

(CH) Chihuahua Club Of South Wales Forest Oak Farm, Mr Green, ellochi@hotmail.co.uk

(CH) King Charles Spaniel Association Tomlinsons Canine Centre, Ratby Road, Markfield, LE67 9RJ, Mr J Blewett, raoulsmith89@yahoo.com

(CH) Northern Dogue de Bordeaux Club Grenoside Community Hall, Mrs L Bamforth, Lindseybamforth@hotmail.com

(CH) Northern Schnauzer Club Newark Showground, Lincoln Road, Newark, Miss CM Ellingworth, doncleve@me.com

(CH) Solid Colours Cocker Spaniel Association Kennel Club Building at Stoneleigh Park, Mrs M Lockwood, chimewood@sky.com

(L) Otley Canine Society Berts Barrow, Austfield Farm, Miss T Gardner, solomanmax@yahoo.co.uk

(L) Rhyl Canine Society Trefnant Village Hall & Memorial Field, Mr AE Burscough, tony.burscough@btinternet.com

(O) British Manchester Terrier Club Shenstone Village Hall, Ms Owczarek, secretary@manchester-terrier-club.co.uk

(O) Dachshund Club Sports Connexion, Mr LJ Cross, dachshundclub1@gmail.com

(O) French Bulldog Club Of England Fairlands Community Centre, Mrs MJ Smith, FBCEsecretary@outlook.com

(O) King Charles Spaniel Association Tomlinsons Boarding Kennels, Mr R Smith, raoulsmith89@yahoo.com

(O) Midland Bedlington Terrier Club Corley Village Hall, Coventry, Mrs YE Bannister, mbtc.secretary@gmail.com

(O) Newfoundland Club Kennel Club Building at Stoneleigh Park, Mrs Hutchinson, secretary@thenewfoundlandclub.co.uk

(O) Northern Ireland Staffordshire Bull Terrier Club Oakfield Community Centre, Ms HR Carson, hollie-92@hotmail.co.uk

(O) Northern Schnauzer Club Newark & Notts Showground, Winthorpe, Newark, Miss CM Ellingworth, doncleve@me.com

(O) Three Counties Pekingese & Cavalier Society Churchdown Community Centre, Miss SJ Webber, sunsante1@yahoo.com

(O) Torquay & District Canine Society Matford Centre, Mrs D Fenn, debs.fenn@btinternet.com

(O/AG) Country Shows Agility Warwickshire College, Mr L Taylor, rover.pro@outlook.com

(O/AG) CrookedOak Agility Greenlands Livery Centre, Wreay, Carlisle, Cumbria, Mr S Richardson,

(O/AG) Kelluki Agility Merrist Wood College, Miss S Hatcher, sjhatcher62@hotmail.com

(O/OB) Bangor (Co Down) District Dog Training Club St Patricks Parish Centre, Mrs Mckittrick, bangordtc@gmail.com

FEBRUARY 22-23

(O/AG) Inspire Agility Moulton College Equestrian Centre, Ms RA Abrahams, ruthabrahams3@hotmail.com

(O/AG) Ogilvie Dogs Ogilvie Dogs, Miss S Pratley

FEBRUARY 23

(CH) Japanese Shiba Inu Club Of Great Britain Tomlinson's Boarding Kennels, Markfield, Miss KA Jones, Karen@almolka.com

(CH) Midland Yorkshire Terrier Club Pelsall Community Centre, Station Road, Pelsall, Ms L Brickley, lyndabky@outlook.com

(CH) Polish Lowland Sheepdog Club Arkwright Centre, Chesterfield, Mrs D Mottram, mybeards.pon@btinternet.com

(CH) Pomeranian Club Of South Wales The Drill Hall, Chepstow, Mrs KM Coombs, Kindredkatsmatt@gmail.com

(CH) South Of England Bulldog Society South Of England Show Ground Nr Haywards Heath, Mrs K Wells, kellylinmist@me.com

(L) Harrogate & District Canine Society Harewood Village Hall, Leeds, Ms JM Shields, julieshields66@gmail.com

(L) North Eastern Staffordshire Bull Terrier Club West Cornforth Community Association, Miss JME McLauchlan, darcysbt2@aol.com

(L) Westmorland Canine Association Preston Patrick Memorial Hall, Mrs H Gilpin, otterbobs@tiscali.co.uk

(O) Billingham Synthonia Canine Society Temple Park Leisure Centre, John Reid Rd, South Shields, Mrs C Pearson, carole.dodds@blueyonder.co.uk

(O) Cheltenham & District Canine Society The Kennel Club Building, Mrs L Wilson, loiswilsonipad@gmail.com

(O) Kent County Canine Association Lockmeadow Market, Miss M Horn, maxinehorn@hotmail.com

(O) Mid Western Shetland Sheepdog Club Chelford Village Hall, Knutford Rd, Mrs K Hateley, kayelainehateley@gmail.com

(O) Midland Yorkshire Terrier Club Pelsall Community Centre, Station Road, Pelsall, Ms L Brickley, lyndabky@outlook.com

(O) Morecambe Bay & Cumbria Staffordshire Bull Terrier Club Cockerham Village Hall, Lancashire, Mr G Nicholson, mbcbsbtsec@gmail.com

(O) Newark & District Canine Society Newark & Notts Showground, Winthorpe, Newark, Mr I Sexton, isexton42@yahoo.com

(O) North East Border Collie Club Hurworth Grange Community Centre, Mrs J Grant, chrisandjan7@hotmail.com

(O) Polish Lowland Sheepdog Club Arkwright Centre, Chesterfield, Mrs D Mottram, mybeards.pon@btinternet.com

(O) Pomeranian Club Of South Wales The Drill Hall, Mrs KM Coombs, Kindredkatsmatt@gmail.com

(O) South Yorkshire Whippet Club, Speedwell Rooms Staveley, Nr Chesterfield, S43 3JL, Mrs C Perkins, colette.p@hotmail.co.uk

(O) West Of England & South Wales Airedale Terrier Club Mark Village Hall, Mr MD Hacker, info@airedaleclub.org.uk

(O) Yorkshire Collie Club Grenoside Community Hall, Mrs CA Biggs, chrisbiggs63@gmail.com

(O) Yorkshire Gundog Club York Auction Centre, Mrs PM Colton, patsycolton@btinternet.com

(O/AG) CrookedOak Agility Greenlands Livery Centre, Wreay, Carlisle, Cumbria, Mr S Richardson,

(O/AG) Do Believe Dog Training World Horse Welfare (Penny Farm), Mrs RJ Radbourne,

(O/AG) Draiocht Agility Portmore Equestrian Centre, Aghalee, Lurgan, Miss Walsh,

(O/AG) Inspire Agility Moulton College Equestrian Centre, Ms RA Abrahams, ruthabrahams3@hotmail.com

(PO) Bridgend & District Kennel Association Cwmbran Stadium, Mrs C Popp, Bridgend.dka.sec@hotmail.com

FEBRUARY 23-27

(CH/WT) Bloodhound Club Chesham, Miss S Clark, secretary@thebloodhoundclub.com

FEBRUARY 24-2

(CH/WT) Yorkshire Working Trials Society West Yorkshire Sports & Social Club, Wakefield, Mrs S Rose, sallyerose@msn.com

FEBRUARY 25

(L) Ripon & District Canine Society Ripon Racecourse, Boroughbridge Road, Ripon, Mrs C Corner, carolinecorner1@outlook.com

FEBRUARY 28-2

(O/WT) East Anglian Working Trials Training Society Rearing Shed, Mr Theobald, lestheobald@btinternet.com

(AG) – Agility, (CH) – Championships, (FL) – Flyball, (HTM) – Heelwork to Music, (L) – Limited Show, (O) – Open Show, (OB) – Obedience, (PA) – Premier Agility, (PO) – Premier Open Show, (R) – Rally, (WT) – Working Trial Show
This information is correct as of 18th November 2024. If you would like to attend any of these events, please contact the Secretary for further details. Licensed by The Kennel Club.

Subscribe to the Kennel Gazette from £30 a year

thekennelclub.org.uk/shop/memberships/kennel-club-affiliates/



THE KENNEL CLUB

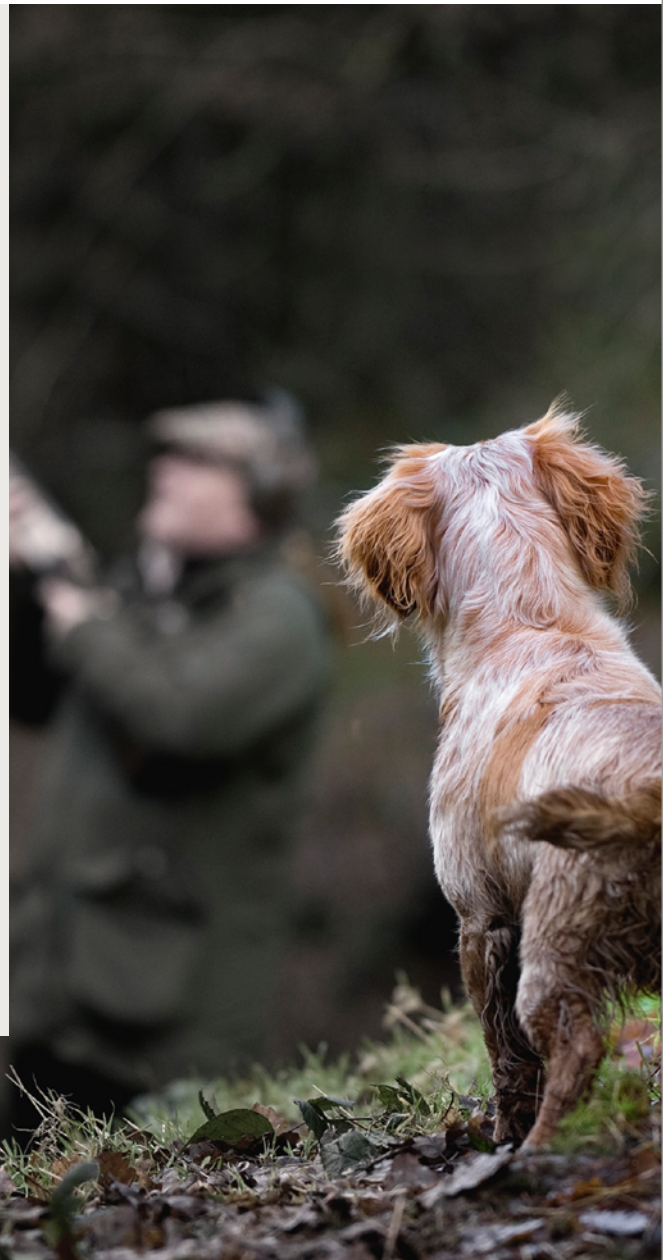
The Emblehope & Burngrange Estate Northumberland

A Centre of Excellence for Working Dogs

This beautiful moorland estate stretches to some 7,550 acres and is absolutely ideal for walked up trialling and training for Retrievers, Spaniels and HPRs. The estate offers both Pheasant and Partridge shooting and the varied terrain offers opportunities for all breeds of Gundog to demonstrate their natural working abilities. Woodland cover provides excellent hunting for Spaniels whilst the stretching moorland is ideal for challenging retrieves and for the pointing breeds to show off their hunting abilities to the full.

As a Centre of Excellence for Working Dogs, the Estate also welcomes the full range of working dog activities including:

- Field Trials including Pointer and Setter Spring Stakes
- Gundog Working Tests
- Gundog Training Days
- Live Game Training Days
- Pointing Tests
- Working Trials
- Bloodhound Trials
- Activity Training Days
- Shooting and Gundog Activities



Book your training activities with the Emblehope Estate:
thekennelclub.org.uk/emblehope | emblehope@thekennelclub.org.uk
01296 318 540 ext 290

Field Trials

The Emblehope & Burngrange Estate Northumberland

A Centre of Excellence for Working Dogs

This beautiful moorland estate stretches to some 7,550 acres and is ideal for walked up trialling and training for Retrievers, Spaniels and HPRs. The estate offers Pheasant and Partridge shooting and the varied terrain offers opportunities for all breeds of Gundog to demonstrate their natural working abilities.

Book your training activities with the Emblehope Estate:
thekennelclub.org.uk/emblehope | emblehope@thekennelclub.org.uk
 01296 318540 ext 290



DECEMBER

DECEMBER 2

Bristol & West Working Gundog Society Novice (AV Hunt, Point and Retrieve), Upton Pyne Estate, Mrs S Wagstaff, mrsraggy100@hotmail.co.uk

North Of Scotland Gundog Association Novice (AV Spaniel), Novar Estate, Evanton, Ms EL Watson Mack, emma@watsonmack.com

Usk Valley Working Gundog Club Novice (AV Spaniel), Stoke Farm, Mrs D Bird, debra.bird@hotmail.com

Shropshire Gundog Society Novice (Cocker Spaniel), Lakeside Shoot, Tregynon, Mrs GM Brown, brownsrangatira@gmail.com

Kintbury Gundog Club Open (Cocker Spaniel), Savernake Forest, Mrs J Bearman, junebearman@hotmail.com

DECEMBER 3

Weimaraner Association All Aged (AV Hunt, Point and Retrieve), Grange Farm, Upper Helmsley, Mr NR Wroe, nigel.wroe@outlook.com

Guildford Working Gundog Club All Aged (AV Retriever), Englefield Estate, Mrs P Money-Coutts, pattimcoutts@gmail.com

West Of England Labrador Retriever Club Open (AV Retriever), Pyne Shoot, Exeter, Mrs JML Horton, joxhorton@gmail.com

Meon Valley Working Spaniel Club All Aged (AV Spaniel), Malshanger Estate, Mrs C Bridgwater, chris@scherzando.co.uk

Leicestershire Gundog Society Open (AV Spaniel (Excluding Spaniel [Cocker])), Witham On The Hill, Bourne, Ms J Gray, joangray@hotmail.co.uk

DECEMBER 4

German Shorthaired Pointer Association Novice (AV Hunt, Point and Retrieve), Radbourne Estate, Miss D Elrington, Dawnelrington@gmail.com

Dukeries [Notts] Gundog Club Novice (AV Retriever), Bretby Shoot, Burton-Upon-Trent, Mr STC North, workinggundogs@msn.com

North West Ulster Spaniel Club All Aged (AV Spaniel), Keeperscourt Shoot, Mr D Kyle, davidwkyle@outlook.com

Leicestershire Gundog Society Novice (AV Spaniel), Witham On The Hill, Bourne, Ms J Gray, joangray@hotmail.co.uk

Barton On Humber Gundog Club Novice (AV Spaniel), Yorkshire Fieldsports Ltd, Mrs H Smith, smith_helen19@sky.com

Mid Wales Working Gundog Society Open (AV Spaniel (Excluding Spaniel [Cocker])), Checkley Wood, Mr N Dembenski, Nickdembenski@live.co.uk

London Working Spaniel Society Open (Cocker Spaniel), Ditchingham Hall, Mrs SE Musselwhite, ssuanmuss62@gmail.com

English Springer Spaniel Club Of Wales Open (English Springer Spaniel), Kemble Shoot, Mr W Lewis, waynelewis5@live.co.uk

DECEMBER 5

Barton On Humber Gundog Club Novice (AV Spaniel), South Farm, Manton, Mrs H Smith, smith_helen19@sky.com

Coventry & District Gundog Society Open (AV Spaniel (Excluding Spaniel [Cocker])), Merevale Estate, Mrs A Stride, adestride@icloud.com

English Springer Spaniel Club Of Wales Novice (English Springer Spaniel), Kemble Shoot, Mr W Lewis, waynelewis5@live.co.uk

DECEMBER 6

North Of Scotland Gundog Association All Aged (AV Hunt, Point and Retrieve), Aberarder Estate, Mr M Canham, mickcanham@hotmail.com

Weimaraner Association Open (AV Hunt, Point and Retrieve), Hawkhurst, Mr NR Wroe, nigel.wroe@outlook.com

Gamekeepers National Association Novice (AV Retriever), Tulchan Estate, Mr A Mair, piperdowngundogs@gmail.com

Three Ridings Labrador Club Novice (AV Retriever), Farndale Estate, Miss A Johnson, teazledown@btconnect.com

Eastern Counties Retriever Society Novice (AV Retriever), The old Dairy, Gressenhall, Mrs SG Laflin, suelafllin10@gmail.com

West Dartmoor Working Gundog Club Novice (AV Retriever), Delamore Estate, Cornwood, Mrs Churchward, membership.wdwc@gmail.com

West Midland Field Trials Society Open (AV Spaniel (Excluding Spaniel [Cocker])), Dinmore Manor Estate, Mrs C Starkey, westmidlandfieldtrialsociety@gmail.com

Lothian & Borders Gundog Association Open (Cocker Spaniel), Emblehope - KC Estate, Mr G Dobbie, george@ecds.biz

DECEMBER 7

North Of Scotland Gundog Association Novice (AV Hunt, Point and Retrieve), Dell Estate, Mr M Canham, mickcanham@hotmail.com

Large Munsterlander Club Open (AV Hunt, Point and Retrieve), Belgar Farm, Mrs H Evans, helenevans0710@gmail.com

Utility Gundog Society All Aged (AV Retriever), Ampton Estate, Mr JC Keegan, geordieland@icloud.com

Mid Ulster Gundog Association Novice (AV Retriever), Caledon Estate, Caledon, Mr R McGregor, mugda1994@gmail.com

Kent Working Spaniel Club Novice (AV Spaniel), Beluncle Farm, Hoo, Mr R Hyde, hydeelaine@hotmail.com

East Midland Gundog Club Novice (AV Spaniel), Wentworth Estate, Mrs S Hefford, suzie.hefford@gmail.com

Scottish Gundog Association Novice (AV Spaniel), Westerton Farm, Bothy, Mr K McMillan, northcountryboy76@gmail.com

Welsh & English Counties Spaniel Club Open (AV Spaniel (Excluding Spaniel [Cocker])), Downton Estate, Ludlow, Mrs AV Kedward, welshandenglish@gmail.com

South West Scotland Gundog Association Open (Cocker Spaniel), Emblehope and Burngrange Estate, Mr RL Lithgow, rablithgow@aol.com

DECEMBER 9

Dove Valley Working Gundog Club Novice (AV Retriever), Bagots Park, Abbots Bromley, Mrs VR King, nessking12@icloud.com

Cambridgeshire Field Trial Society Novice (AV Retriever), Marsham, Norwich, Mrs S Stonebridge, owlstone@btinternet.com

East Midland Gundog Club Novice (AV Retriever), Neville Holt Estate, Miss H Swan, helenswan01@btinternet.com

Field Trials

The Emblehope & Burngrange Estate Northumberland

A Centre of Excellence for Working Dogs

This beautiful moorland estate stretches to some 7,550 acres and is ideal for walked up trialling and training for Retrievers, Spaniels and HPRs. The estate offers Pheasant and Partridge shooting and the varied terrain offers opportunities for all breeds of Gundog to demonstrate their natural working abilities.

Book your training activities with the Emblehope Estate:
thekennelclub.org.uk/emblehope | emblehope@thekennelclub.org.uk
 01296 318540 ext 290



North Devon Working Gundog Club Novice (AV Retriever), Bulworthy, Mrs R Harvey, rrwharvey@hotmail.com

Fermanagh Gundog Club All Aged (AV Spaniel), Corrad Game Shoot, Lisnaskea, Mr P McKearney, peter@pmkelectrical.com

Midland Counties Field Trial Society Open (AV Spaniel (Excluding Spaniel [Cocker])), Creeton Shoot, Mrs Owen, mcfts@hotmail.co.uk

West Midland Field Trials Society Open (Cocker Spaniel), Byrd's Retreat, Harvington, Mrs C Starkey, westmidlandfieldtrialsociety@gmail.com

Cocker Spaniel Club Open (Cocker Spaniel), Savernake Forest, Miss SD Kettle, lujesa@btinternet.com

Glamorganshire Field Trial Society Novice (English Springer Spaniel), Edwinstord Estate, Talley, Mr K John, kevinjohnspaniels@gmail.com

DECEMBER 10

Norwich Gundog Club Novice (AV Retriever), Letheringsett, Holt, Mrs PA Wimmer, pamelawimmer@btinternet.com

Eastern Counties Spaniel Society Open (AV Spaniel (Excluding Spaniel [Cocker])), Houghton Hall, Kings Lynn, Mrs WE Knight, abbeyoaks.gundogs2@gmail.com

Midland Counties Field Trial Society Open (Cocker Spaniel), Creeton Shoot, Mrs Owen, mcfts@hotmail.co.uk

Yellow Labrador Club Novice (Yellow Labrador Retriever), Great Livermere, Bury St Edmunds, Mrs AC Hogsbjerg, allie@rufrivergundogs.co.uk

DECEMBER 11

North West Ulster Spaniel Club All Aged (AV Spaniel), Dunderave Estate, Bushmills, Mr D Kyle, davidwkyle@outlook.com

Essex Field Trial Society Novice (AV Spaniel), Merevale Estate, Mrs F Colclough, francescolclough@gmail.com

Cheshire, North Wales & Shropshire Retriever & Spaniel Society Novice (AV Spaniel), Checkley Wood, Dr NC Reynolds, dr.nicola@btinternet.com

North Devon Working Gundog Club Novice (AV Spaniel), Maristowe Shoot, Roberough, Mrs R Harvey, rrwharvey@hotmail.com

Dove Valley Working Gundog Club Open (AV Spaniel (Excluding Spaniel [Cocker])), Cubley Estate, Ashbourne, Mrs J Beharrell, coltonhalfarm@gmail.com

Utility Gundog Society Open (AV Spaniel (Excluding Spaniel [Cocker])), Brook Farm, Cuffley, Mrs N Hunter, jimmyandnicki@aol.com

Chiltern Gundog Society Open (Cocker Spaniel), Holride Farm, Ripley, Mr L Wingfield, l.wingfield@aol.co.uk

DECEMBER 12

Duchy Working Gundog Club Novice (AV Retriever), Upton Pyne Estate, Miss H Matthews, hayley-matthews@hotmail.co.uk

Utility Gundog Society Novice (AV Spaniel), Beckingham Hall, Mrs N Hunter, jimmyandnicki@aol.com

Barton On Humber Gundog Club Novice (Cocker Spaniel), South Farm, Manton, Mrs H Smith, smith_helen19@sky.com

DECEMBER 13

Yorkshire Golden Retriever Club Open (AV Retriever), Farndale Estate, Miss B Baxter, baxter.bermary1@gmail.com

Golden Retriever Club All Aged (Golden Retriever), Canal Game Shoot, Hawkhurst Estate, Mrs KTA Jinks, kim.jinks@gmail.com

DECEMBER 14

Forth & Clyde Working Gundog Association All Aged (AV Retriever), Tullybeagles, Bankfoot, Mr D Logan, davidlogan93@gmail.com

Labrador Retriever Club Of Northern Ireland Novice (AV Retriever), Dunderave Estate, Mr JW McKelvey, bill@billmckelvey.co.uk

Arfon Working Gundog Club Open (AV Retriever), Bryn-y-Pys, Wrexham, Mr GR Williams, gwilym.williams02@hotmail.co.uk

Lancashire & Merseyside Field Trial Society Novice (AV Spaniel), Mossborough Shoot, Mrs PM Aubrey, pennyclover@btinternet.com

Lincolnshire Gundog Society Open (AV Spaniel (Excluding Spaniel [Cocker])), Moor Monkton Shoot, York, Mr J Toon, bramblestone@yahoo.com

DECEMBER 16

German Longhaired Pointer Club Novice (AV Hunt, Point and Retrieve), Kilverstone Estate, Thetford, Mrs JA Tuck, juliatuck@aol.com

Wye Valley Retriever Club Open (AV Retriever), Batsford Estate, Moreton-in-Marsh, Mrs A Crampton, anna@cleirwy.co.uk

Dukeries [Notts] Gundog Club Open (AV Spaniel (Excluding Spaniel [Cocker])), Witham On The Hill, Bourne, Mr JA Nightingale, j.nightingale70@btinternet.com

Tay Valley Gundog Association Open (AV Spaniel (Excluding Spaniel [Cocker])), Dalmeny Estate, Mrs A Sorley, kirstysorley10@icloud.com

DECEMBER 17

Italian Spinone Club Of Great Britain Novice (AV Hunt, Point and Retrieve), Somerford Hall, Mrs JK Wain, jk.ero@sky.com

Fermanagh Gundog Club Novice (AV Retriever), Corrad Game Shoot, Lisnaskea, A Findlay, 25526.fin@gmail.com

Forth & Clyde Working Gundog Association Novice (AV Spaniel), Auchencheyne Estate, Mr W Drummond, wgd@btinternet.com

Dukeries [Notts] Gundog Club Open (Cocker Spaniel), Witham On The Hill, Bourne, Mr JA Nightingale, j.nightingale70@btinternet.com

DECEMBER 18

Brittany Club Of Great Britain All Aged (AV Hunt, Point and Retrieve), Honiley Estate, Mr DB Anderton, davidanderton@btinternet.com

Weimaraner Association All Aged (AV Hunt, Point and Retrieve), Grange Farm, Upper Helmsley, Mr NR Wroe, nigel.wroe@outlook.com

Usk Valley Working Gundog Club Novice (AV Retriever), Coombe Farm, Chepstow, Mrs D Bird, debra.bird@hotmail.com

Essex Field Trial Society Open (AV Spaniel (Excluding Spaniel [Cocker])), Castle Rising Estate, Mrs F Colclough, francescolclough@gmail.com

Cheshire, North Wales & Shropshire Retriever & Spaniel Society Open (AV Spaniel (Excluding Spaniel [Cocker])), Checkley Wood, Dr NC Reynolds, dr.nicola@btinternet.com

Field Trials

The Emblehope & Burngrange Estate Northumberland

A Centre of Excellence for Working Dogs

This beautiful moorland estate stretches to some 7,550 acres and is ideal for walked up trialling and training for Retrievers, Spaniels and HPRs. The estate offers Pheasant and Partridge shooting and the varied terrain offers opportunities for all breeds of Gundog to demonstrate their natural working abilities.

Book your training activities with the Emblehope Estate:
thekennelclub.org.uk/emblehope | emblehope@thekennelclub.org.uk
 01296 318540 ext 290



THE KENNEL CLUB

Scottish Spaniel Club Open (AV Spaniel (Excluding Spaniel [Cocker]), Tullybeagles, Bankfoot, Mr A Coutts, stagsden@hotmail.com

DECEMBER 19

Kent Working Spaniel Club Open (AV Spaniel (Excluding Spaniel [Cocker]), Beluncle Farm, Hoo, Mr R Hyde, hydeelaine@hotmail.com

DECEMBER 20

Usk Valley Working Gundog Club Open (AV Spaniel (Excluding Spaniel [Cocker]), Upton Pyne Estate, Mrs D Bird, debra.bird@hotmail.com

DECEMBER 21

Welsh & English Counties Spaniel Club Open (Cocker Spaniel), Stokesay Estate, Ludlow, Mrs AV Kedward, welshandenglish@gmail.com

Gwynedd Spaniel Club Open (Cocker Spaniel), Wentworth Estate, Miss A Hayes, al.hayes@hotmail.co.uk

DECEMBER 23

The Kennel Club Ltd Open (AV Spaniel (Excluding Spaniel [Cocker]), Witham On The Hill, Bourne, Miss K Broers, kate.broers@googlemail.com

Utility Gundog Society Open (Cocker Spaniel), Shotesham Park, Mrs N Hunter, jimmyandnicki@aol.com

Dove Valley Working Gundog Club Open (Cocker Spaniel), Bagots Park, Abbots Bromley, Mrs J Beharrell, coltonhallfarm@gmail.com

DECEMBER 27

Mid Sussex Working Spaniel Club Novice (Cocker Spaniel), Windsor Great Park, Mr S Connor, S.connor@hotmail.co.uk

DECEMBER 28

Arfon Working Gundog Club Novice (AV Retriever), Gwysaney Hall, Mold, Flintshire, Mr GR Williams, gwilym.williams02@hotmail.co.uk

The Kennel Club Ltd Novice (English Springer Spaniel), Wentworth Estate, Miss K Broers, kate.broers@googlemail.com

DECEMBER 30

Exmoor Gundog Club Novice (AV Retriever), Combe Davey, Taunton, Mrs S Neary, collarm@hotmail.co.uk

Dorset Working Spaniel Club Open (AV Spaniel (Excluding Spaniel [Cocker]), Woodbury, Mr MR Ashman, martin_ashman@btinternet.com

Dukeries [Notts] Gundog Club Novice (Cocker Spaniel), Sutton Estate, Mrs C Gretton, dukeriesclub@aol.com

Usk Valley Working Gundog Club Novice (Cocker Spaniel), Pyne Shoot, Exeter, Mrs D Bird, debra.bird@hotmail.com

JANUARY

JANUARY 4

Yorkshire Golden Retriever Club Novice (AV Retriever), Wentworth Estate, Miss B Baxter, baxter.bermary1@gmail.com

Fermanagh Gundog Club Novice (AV Retriever), Murley Mountain, Mrs S Neogard Blakeney, sara.neogard@europe.com

West Dartmoor Working Gundog Club Open (AV Retriever), Lyneham Estate, Mrs Churchward, membership.wdwc@gmail.com

Yellow Labrador Club All Aged (Yellow Labrador Retriever), Farnedale Estate, Mrs AC Hogsbjerg, allie@rufrivergundogs.co.uk

JANUARY 6

Hampshire Gundog Society Novice (AV Hunt, Point and Retrieve), The Old Granary Shoot, Winchester, Mrs HM Gray, heather.gray@talktalk.net

Utility Gundog Society Novice (AV Retriever), Ampton Estate, Mrs VA Easey, verityeasey@gmail.com

Meon Valley Working Spaniel Club Novice (AV Spaniel), Facombe Estate, Mrs C Bridgwater, chris@scherzando.co.uk

Eastern Counties Golden Retriever Club Show Gundog Working Certificate (Show Gundog Working Certificate Day for Retrievers), Ampton Estate, Mrs Ewings, donaldanddi@btinternet.com

JANUARY 7

Worcestershire Gundog Society Novice (AV Hunt, Point and Retrieve), Somerford Hall, Mr Roe, spinone@btconnect.com

Dukeries [Notts] Gundog Club All Aged (AV Retriever), Wentworth Estate, Mrs C Gretton, dukeriesclub@aol.com

Suffolk Gundog Club Novice (AV Spaniel), Shotesham Park, Mrs AL Musk, angela.musk@btinternet.com

Lincolnshire Gundog Society Novice (AV Spaniel), Manton, Mr J Toon, bramblestone@yahoo.com

JANUARY 8

Isle Of Wight Gundog Club Open (AV Retriever), Ashengrove, Mrs W Perera, wendy.perera@btinternet.com

JANUARY 9

German Shorthaired Pointer Club Open (AV Hunt, Point and Retrieve), Warrior Lodge Farm, Mr IB Halbert, ianbarbara.marimay2@btinternet.com

JANUARY 10

German Longhaired Pointer Club All Aged (AV Hunt, Point and Retrieve), Emblehope and Burngrange Estate, Mrs JA Tuck, juliatuck@aol.com

Worcestershire Gundog Society Open (AV Hunt, Point and Retrieve), GWCT Allerton Project, Mr Roe, spinone@btconnect.com

JANUARY 11

Hungarian Vizsla Society All Aged (AV Hunt, Point and Retrieve), Emblehope - KC Estate, Mr J Reavil, cwnsaethugundogs@gmail.com

Eastern Counties Spaniel Society Novice (AV Spaniel), Wherstead, Mr S Newman, sunnymead2012@gmail.com

JANUARY 13

German Longhaired Pointer Club All Aged (AV Hunt, Point and Retrieve), Ditchley Estate, Enstone, Mrs JA Tuck, juliatuck@aol.com

Hungarian Vizsla Society Open (AV Hunt, Point and Retrieve), Emblehope - KC Estate, Mr J Reavil, cwnsaethugundogs@gmail.com

Cornwall Field Trial Society Open (AV Retriever), Colquite Estate, Miss Z Gething, zoe@sky.com

The Kennel Club Ltd All Aged (AV Spaniel (Except Spaniel [Cocker]) and Spaniel [English Springer]), Witham On The Hill, Bourne, Miss K Broers, kate.broers@googlemail.com

Field Trials

The Emblehope & Burngrange Estate Northumberland

A Centre of Excellence for Working Dogs

This beautiful moorland estate stretches to some 7,550 acres and is ideal for walked up trialling and training for Retrievers, Spaniels and HPRs. The estate offers Pheasant and Partridge shooting and the varied terrain offers opportunities for all breeds of Gundog to demonstrate their natural working abilities.

Book your training activities with the Emblehope Estate:
thekennelclub.org.uk/emblehope | emblehope@thekennelclub.org.uk
 01296 318540 ext 290



JANUARY 14

Eastern Counties Spaniel Society All Aged (AV Spaniel), Shotesham Park, Mrs WE Knight, abbeyoaks.gundogs2@gmail.com

Shropshire & Staffordshire Working Spaniel Society Novice (AV Spaniel), Wood Shoot, Coldsall, Mr PG Leeke, paul_leeke@hotmail.co.uk

Wiltshire Working Gundog Society Novice (AV Spaniel), Great Durnford Estate, Salisbury, Mr TJ Sheppard, tombearhill@gmail.com

Chiltern Gundog Society Open (AV Spaniel (Excluding Spaniel [Cocker])), Portman Estate, Mr L Wingfield, l.wingfield@aol.co.uk

East Midland Gundog Club Novice (Cocker Spaniel), Wentworth Estate, Ms V West, victoriapeters1990@hotmail.co.uk

JANUARY 15

Three Ridings Labrador Club All Aged (AV Retriever), Thimbleby Estate, Mr MS Wilson, mdwilson@tiscali.co.uk

Norwich Gundog Club Novice (AV Retriever), Westwick Hall, Norwich, Mrs PA Wimmer, pamelawimmer@btinternet.com

Dove Valley Working Gundog Club Novice (Cocker Spaniel), Bagots Park, Abbots Bromley, Mrs J Beharrell, coltonhallfarm@gmail.com

JANUARY 16

Leicestershire Gundog Society Novice (AV Retriever), Prestwold Hall Estate Shoot, Loughborough, Mrs Hastings, lgs.retftsecretary@outlook.com

United Retriever Club Novice (AV Retriever), Manton & Cleatham Shoot, Mrs R Warner, ruthwarner2712@gmail.com

Kent Working Spaniel Club Novice (AV Spaniel), Beluncle Farm, Hoo, Mr R Hyde, hydeelaine@hotmail.com

JANUARY 17

Hunt, Point & Retrieve Gundog Association Open (AV Hunt, Point and Retrieve), Emblehope and Burngrange Estate, Mrs R Webster, rew.webster@icloud.com

Fermanagh Gundog Club All Aged (AV Spaniel), Keeperscourt Shoot, Mr P McKearney, peter@pmkelectrical.com

JANUARY 20

Bracco Italiano Club Novice (AV Hunt, Point and Retrieve), Warrior Lodge Farm, Mrs SC Parr, pruso@ntlworld.com

Midland Counties Field Trial Society All Aged (AV Retriever), Witham On The Hill, Bourne, Ms PJ Pinn, pjpinn@gmail.com

Cambridgeshire Field Trial Society Novice (AV Spaniel), Audley End Estate, Mrs S Stonebridge, owlstone@btinternet.com

Labrador Retriever Club Novice (Labrador Retriever), Trumpington Estate, Mrs S Winter, answinter1@icloud.com

JANUARY 21

Cheshire, North Wales & Shropshire Retriever & Spaniel Society Novice (AV Retriever), Checkley Wood, Dr NC Reynolds, dr.nicola@btinternet.com

JANUARY 22

Lothian & Borders Gundog Association Novice (AV Retriever), Hirsell Estate, Coldstream, Mr A Kennedy, superalk_4@hotmail.com

JANUARY 25

Hampshire Gundog Society Open (AV Retriever), West Tisted Manor Estate, Alresford, Miss P Graystone, paula@wpcc.org.uk

JANUARY 27

Worcestershire Gundog Society All Aged (AV Hunt, Point and Retrieve), Honiley Estate, Mr Roe, spinone@btconnect.com

Westward Gundog Society Novice (AV Retriever), Great Fulford Estate, Mrs SA Jenkins, ss.ajenkins@btinternet.com

Wiltshire Working Gundog Society Open (AV Retriever), Great Durnford Estate, Salisbury, Mrs J Davis, info@classiceurosport.co.uk

West Midland Field Trials Society Open (AV Retriever), Stean, Mrs C Starkey, westmidlandfieldtrialsociety@gmail.com

Ulster Gundog League All Aged (AV Spaniel), Corrad Game Shoot, Lisnaskea, Mr R Mcclearn, mcclearn82@googlemail.com

Midland Counties Field Trial Society Novice (AV Spaniel), Creeton Shoot, Mrs Owen, mcfts@hotmail.co.uk

JANUARY 28

Westward Gundog Society Novice (AV Spaniel), Stowell Park, Northleach, Mrs SA Jenkins, ss.ajenkins@btinternet.com

Dove Valley Working Gundog Club Novice (AV Spaniel), Cubley Estate, Ashbourne, Mrs J Beharrell, coltonhallfarm@gmail.com

JANUARY 29

Yorkshire Retriever Field Trial Society Novice (AV Retriever), Dalton Estate, Mrs LN Carr, lynda_carr@hotmail.co.uk

Chiltern Gundog Society Novice (English Springer Spaniel), Portman Estate, Mr L Wingfield, l.wingfield@aol.co.uk

This information is correct as of 18th November 2024. If you would like to attend any of these events, please contact the Secretary for further details. Licensed by the Kennel Club.

Subscribe to the Kennel Gazette from £30 a year

thekennelclub.org.uk/shop/memberships/kennel-club-affiliates/

Seminar Diaries

Breed Appreciation Days

	DATE	BREED	BREED SPEAKER	VENUE ADDRESS	CONTACT
DECEMBER	1st	Tibetan Mastiff	Jeff Springham	Baginton Village Hall, Francis Road, Baginton, Coventry CV8 3AB	Tibetan Mastiff Club of Great Britain Jeff Springham, 07905 262937 jeffspringham@yahoo.co.uk
	1st	Staffordshire Bull Terrier	Lesley McFadyen and Diane Taylor	West Cornforth Community Centre, Station Road, West Cornforth DL17 9LA	North Eastern Staffordshire Bull Terrier Club Audrey Hubery, 01388 606000 nozac.hubery@gmail.com
	4th	Spaniel (English Springer)	Yvonne Billows & Lesley Field	Online Platform	English Springer Spaniel Club Kath Holt, 07872 136624 Holtkath@gmail.com
	4th	German Longhaired Pointer	Pam Blay	Online Platform	German Longhaired Pointer Club Tracy Boyles, 07821 674619 tracy.bleyos@outlook.com
	5th	Australian Shepherd	Penny Richards	Online Platform	Australian Shepherd Club UK Jean Turnbull, 01388 766603 jean.jenkova@live.co.uk
	14th	Schipperke	Ian Miller	Stafford County Showground, Weston Road, Stafford, in conjunction with LKA Show	Schipperke Club Karen Bugg, 07505 108305 karen@komargo.co.uk
JANUARY 2025	11th	Staffordshire Bull Terrier	Lesley McFadyen, Gem Rowe, Martin Johnson, Karon Jackson, Alan Hedges	The Royal British Legion Club, Church Lane, Willenhall WV12 5PT	Staffordshire Bull Terrier Club Karon Jackson, 01543 451900 jackabyte@hotmail.co.uk
	12th	Collie (Rough)	Angela Harvey	Thorpe Willougby Village Hall, Leeds Road, Thorpe Willougby YO8 9PA	Yorkshire Collie Club Christine Biggs, 07512 744410 chrisbiggs63@gmail.com
	22nd	Boxer	Tim Hutchings	Online Platform	Boxer Breed Council Vikki Van-Beck, 07836 325125 boxers@newlatheboxers.co.uk
	26th	Border Terrier	Miss S Leslie & Mr J Bainbridge	Online Platform	Southern Border Terrier Club, Midland Border Terrier Club and East Anglia Border Terrier Club Wendy Mooney, 07904 141441 wendy@mooneys.co.uk
FEBRUARY 2025	1st	Pointer	Mathew Oddie and David Alcorn	Online Platform	Pointer Club of Scotland Caroline Bell, 07590 319691 carolinejstone@live.co.uk
	1st	Pomeranian	Robert Niven-Lewis	Steventon Village Hall, Abingdon, Oxford OX13 6RR	South of England Pomeranian Club & The Pomeranian Club of South Wales Amanda Orchard & Karen Coombs manatek@msn.com or toydogs65@yahoo.com 07958 315373 or 07368 302054
	2nd	Old English Sheepdog	Dr Ann Hodgeson	Nether Whitacre Village Hall, Station Road, Nether Whitacre B46 2EH	Midland Old English Sheepdog Club Dr Sarah Winson, 07748 961812 Midlandoesclub@gmail.com

Seminar Diaries

Breed Appreciation Days

DATE	BREED	BREED SPEAKER	VENUE ADDRESS	CONTACT
4th	Hungarian Wirehaired Vizsla	Christine Morgan	Online Platform	Hungarian Wirehaired Vizsla Association Christine Morgan, 07970 634780 chair@hwva.org.uk
9th	Chihuahua	Julie Sparrow	Polesworth Memorial Hall, 20 Bridge Street, Tamworth B78 1DT	British Chihuahua Club & Smoothcoat Chihuahua Club Pauline Lodwick, 07766 807785 pauline.lodwick@hotmail.com
9th	Chow Chow	Sheila Jakeman	Nether Whitacre Village Hall, Station Road, Whitacre Heath, Coleshill, Warks B46 2EH	Chow Chow Breed Council Rhys Green and Claire Merrion 01558 685481 or 01480 466352 rhys@greenideas.me.uk
9th	Beauceron	Jackie Barnes, Chris Fox and Fiona White	The Kennel Club Building, Stoneleigh Park, Kenilworth, CV8 2LZ	Beauceron Club UK Jackie Barnes, 07738 005807 secretary@beauceronclubuk.org
15th	Basset Fauve De Bretagne	Roger Tebbutt	Ringtail House, Unit 5 Ringtail Place, Ormskirk, Burscough Ind Estate L40 8LA	Basset Fauve De Bretagne Club Roy Blevins, 07841 852880 blevwil.kennels@hotmail.co.uk
16th	Beagle	David Craig	Shenstone Village Hall, Shenstone, Nr Lichfield, Staffordshire	Beagle Club Nikki Peterson, 07766 131116 troopersway@yahoo.co.uk
20th	Gordon Setter	Jean Collins-Pitman	Online Platform	British Gordon Setter Club James Newton, 07305 811924 james.patamoke@gmail.com
22nd	Soft Coated Wheaten Terrier	TBC	Baginton Village Hall , Frances Road, Baginton, Coventry CV8 3AB	Soft Coated Wheaten Terrier Club Of Great Britain Helen Reaney, 07792 558272 secretary@wheaten.org.uk
22nd	Rhodesian Ridgeback	Lindsey Barnes	Chieveley Village Hall & Recreation Centre, High Street, Chieveley, Berkshire RG20 8TE	Southern Rhodesian Ridgeback Association Michael House, 07850 158699 mikehouse@hotmail.co.uk
22nd	Retriever (Flat Coated)	Suzi Tagg and Victoria Goldburg	Elstead Village Hall, Thursley Road, Elstead GU8 6DG	Southern Flatcoated Retriever Club Suzi Tagg, 07880 746977 suzi.tagg@yahoo.co.uk
23rd	Irish Setter	Christine Morgan	Hamorthy Club, Magna Road, Poole, Dorset BH21 3AP	South Of England Irish Setter Club Mrs P Harris, 01202 885303 canford.print@live.co.uk
23rd	Boston Terrier	Fiona King	Chieveley Village Hall, High Street, Chieveley RG20 8TE	Southern Boston Terrier Club Fiona King, 07712 595498 Secretary@southernbostonterrierclub.org.uk
23rd	Tibetan Spaniel	Tony Moran	Parkside Hall, Woburn Street, Amphill, Bedford MK45 2HX	South East and East Anglian Tibetan Spaniel Society Hilary Breeze, 07825 805333 hilibreeze.16@gmail.com

FEBRUARY 2025

Seminar Diaries

Breed Appreciation Days

	DATE	BREED	BREED SPEAKER	VENUE ADDRESS	CONTACT
MARCH 2025	2nd	Bedlington Terrier	Viv Rainsbury	North End West Hall, Kennel Club Building, Stoneleigh Park	Midland Bedlington Terrier Club Yvonne Bannister, 07813 450575 mbtc.secretary@gmail.com
	16th	Spaniel (Welsh Springer)	John Thirlwell	Cobham Village Hall, Lushington Drive, Cobham, Surrey KT11 2LU	South Eastern Welsh Springer Spaniel Club Tracy Bennett, 07725 557943 Tracy.sewssc@gmail.com
	16th	Norwich Terrier	Lesley Crawley	Weedon Village Hall, West St, Weedon Bec, Northampton NN7 4QU	Norwich Terrier Club Beverley Watkins, 01708 473897 beverleywatkinsntc@hotmail.co.uk
	23rd	Weimaraner	TBC	Johnstonebridge Community Centre, Kirkbank Road, Johnstonebridge, Lockerbie DG11 1ES	Weimaraner Club of Scotland Debbie Wallwork, 07968 623249 debbie.wallwork14@gmail.com
	23rd	Mastiff	Pamela Jeans-Brown	Bearley Village Hall, Snitterfield Road, Bearley, Stratford Upon Avon CV37 0SR	Mastiff Association & Old English Mastiff Club Deborah Harding, 07817 881589 tysonkobe@aol.com
	29th	Tibetan Spaniel	Heather Simper	Steventon Village Hall, Steventon, Nr Abingdon OX13 6AA	South Western Tibetan Spaniel Club Heather Simper, 01235 850289 hjs.clydum@hotmail.co.uk
APRIL 2025	6th	Afghan Hound	Susan Rhodes	Parish Hall, Greasly Sports Centre, Dovecote Road, Newthorpe, Nottingham NG16 3QN	Midland Afghan Hound Club Michelle Bloor, 01773 715054 michelle@pashtari.co.uk
	6th	Manchester Terrier	Mandy Davies, Mick Oxley, Mark Walshaw	Willington Village Hall, Twyford Road, Willington, Derby DE65 6DE	Manchester Terrier Association Mandy Davies, 07734 672805 wystry@hotmail.com
	10th	Lagotto Romagnolo	Carolyn Fry	Online Platform	Lagotto Romagnolo Association Ann Stephenson, 01276 471064 asteph33@aol.com
	20th	Chihuahua	David Reece	Mappleborough Green Village Hall, Birmingham Road Mappleborough Green, Studley B80 7BT	Midland Chihuahua Club & Longcoat Chihuahua Club Lynn Hill, 07760 130511 lynn.becanna@talk21.com
JUN '25	7th	Scottish Terrier	Stuart Plane	The Jubilee Hall, Lewkwoor Village, Oxon OX49 5TL	Scottish Terrier Breeders & Exhibitors Association and West of England Scottish Terrier Club Anne Dauncey, 01952 252562 annedauncey@aol.com
OCT '25	18th	King Charles Spaniel	Mea Kendall and Tracy Jackson	Baginton Village Hall, Frances Road, Coventry CV8 3AB	Northern King Charles Spaniel Club & King Charles Spaniel Association Loraine Ratter, 07951 857311 nksc.secretary@gmail.com
NOV '25	2nd	Scottish Terrier	TBC	Normanton On Soar Village Hall, Main St, Loughborough, Leicester LE12 5HB	Scottish Terrier Club (England) Mr D Mathias, 01227 731406 scottishterriereng@gmail.com

Health Surveys

BREED AND AIM OF SURVEY	FURTHER INFORMATION
<p>ALL BREEDS To improve our understanding of the prevalence and types of back problems affecting different pedigree dog breeds.</p>	<p>Click here for the survey For further information please contact: health@thekennelclub.org.uk</p>
<p>ALL BREEDS The Royal Veterinary College is undertaking a study exploring the impacts of canine vision loss on dog and owner quality of life. You are eligible to take part in the study if: • You own a dog aged between 3 to 8 years of age. • Your dog has either been diagnosed with progressive retinal atrophy (PRA) or another chronic vision loss condition but no other medical conditions, or if your dog has no problems with vision loss or any other medical conditions. For more information, please visit https://www.rvc.ac.uk/research/projects/the-impacts-of-vision-loss-on-dog-and-owner-quality-of-life</p>	<p>Click here for the survey For further information please contact Mr William Carter (MRes student) on wcarter@rvc.ac.uk or Dr Siobhan Abeyesinghe (Primary supervisor) on sabeyesinghe@rvc.ac.uk</p>
<p>ALL BREEDS To improve our understanding of the prevalence and type of heart disease affecting different pedigree dog breeds.</p>	<p>Click here for the survey For further information please contact: health@thekennelclub.org.uk</p>
<p>ALL BREEDS: CANINE OBESITY FACTORS AND OWNER BODY IMAGE PERCEPTION A study investigating canine obesity through an online survey, asking owners to identify ideal body shapes and sizes through perception of diagrams. For dogs over two years of age.</p>	<p>Click here for the survey</p>
<p>ALL BREEDS Research, including from our GutDiscovery® microbiome tests, has shown that puppies' microbiome differs significantly from senior dogs. However, the ageing dog microbiome remains underexplored, and our study seeks to fill this knowledge gap. We aim to determine whether strategies to maintain microbiome diversity in ageing dogs could delay the onset of immunosenescence and support longer, healthier lives. The BIOME9 Longevity Study aims to recruit 1,000 dogs, ranging from 6 months to 15 years old, divided into the following age brackets: • Puppy (0-12 months) • Adolescent (12-18 months) • Adult (18 months to 7 years) • Senior (7+ years)</p>	<p>Click here for more information. Contact Dr Bushra Schuitemaker here or call 07415 267613</p>
<p>AMERICAN COCKER SPANIEL To look at the overall health of the American Cocker Spaniel and collect information that will help improve knowledge on prevalence of any existing conditions and identify any potential emerging issues, in order to improve the breed's health and welfare for future generations.</p>	<p>Click here for the survey For further information please contact: adeva@hotmail.co.uk</p>
<p>BAVARIAN MOUNTAIN HOUND To look at the overall health of Bavarian Mountain Hounds in the UK and collect information that will help improve our knowledge on the prevalence of any existing conditions and identify any potential emerging issues, in order to improve the breed's health and welfare for future generations.</p>	<p>Click here for the survey For further information please contact: health@thekennelclub.org.uk</p>
<p>BORDER COLLIE: THE BIG BRAINY BORDER COLLIE STUDY Part 1: studying the breed's brain development and how seizures and behavioural abnormalities arise in the breed. ALL breed owners wanted to complete survey, click here. Part 2: Recruiting one to eight-year-old epileptic and non-epileptic Border Collies.</p>	<p>Click here for the survey</p>
<p>BOXER To collect information that will help improve our knowledge on what the breeding community would like to see if we were to develop a Kennel Club/Veterinary Cardiology Society (VCS) heart scheme, and ensure the scheme is suitable for all breeders. This health survey is open to all breeders (or prospective breeders) of Boxers.</p>	<p>Click here for the survey For further information please contact: health@thekennelclub.org.uk</p>

Health Surveys

BREED AND AIM OF SURVEY	FURTHER INFORMATION
<p>BOXER To collect information that will help improve our knowledge on what the breeding community would like to see if we were to develop a Kennel Club/Veterinary Cardiology Society (VCS) heart scheme, and ensure the scheme is suitable for all breeders. This health survey is open to all breeders (or prospective breeders) of Boxers.</p>	<p>Click here for the survey For further information please contact: health@thekennelclub.org.uk</p>
<p>CIRNECO DELL'ETNA To look at the overall health of the Cirneco dell'Etna and collect information to improve our knowledge on the prevalence of any existing conditions and identify any potential emerging conditions, in order to improve the breed's health and welfare for future generations.</p>	<p>Click here for the survey For further information please contact: hillyercaroline@gmail.com</p>
<p>DACHSHUND (ALL VARIETIES) To continually monitor the overall health of the Dachshund varieties and collect information that will help improve knowledge on prevalence of any existing conditions and identify any potential emerging issues, in order to improve the breed's health and welfare for future generations.</p>	<p>Click here for the survey For further information please contact: info@dachshundhealth.org.uk</p>
<p>ENTLEBUCHER MOUNTAIN DOG To look at the overall health, wellbeing and behaviour of UK Entlebucher Mountain Dogs.</p>	<p>Click here for the survey For further information please contact: chairman@entlebucher.co.uk</p>
<p>FIELD SPANIEL To look at the overall health of the Field Spaniel and collect information to improve our knowledge on the prevalence of any existing conditions and identify any potential emerging conditions, in order to improve the breed's health and welfare for future generations.</p>	<p>Click here for the survey For further information please contact: health@thekennelclub.org.uk</p>
<p>FINNISH LAPPHUND To look at the overall health of the Finnish Lapphund and collect information to improve our knowledge on the prevalence of any existing conditions and identify any potential emerging conditions, in order to improve the breed's health and welfare for future generations.</p>	<p>Click here for the survey For further information please contact: health@thekennelclub.org.uk</p>
<p>FLAT COATED RETRIEVER To record data about the causes of death in the Flat Coated Retriever.</p>	<p>Click here for the survey For further information please contact a member of the Society Health Sub Committee, contact details available here</p>
<p>HAVANESE To continually monitor the overall health of the Havanese and collect information that will help improve knowledge on prevalence of any existing conditions and identify any potential emerging issues, in order to improve the breed's health and welfare for future generations.</p>	<p>Click here for the survey For further information please contact: akkad@doctors.org.uk</p>
<p>HAVANESE This survey aims to help us understand factors affecting longevity and causes of death in the breed.</p>	<p>Click here for the survey For further information please contact: akkad@doctors.org.uk</p>
<p>HUNGARIAN WIRE HAired VIZSLA To continually monitor the overall health of the Hungarian Wire Haired Vizsla and collect information that will help improve our knowledge on the prevalence of any existing conditions and identify any potential emerging issues, in order to improve the breed's health and welfare for future generations.</p>	<p>Click here for the health reporting form Click here for the death reporting form For further information please contact: health@hwva.org.uk</p>

Health Surveys

BREED AND AIM OF SURVEY	FURTHER INFORMATION
<p>IRISH WOLFHOUND This study is investigating the factors influencing bloating and the development and outcome of GDV in Irish Wolfhounds in the UK.</p>	<p>Click here for the survey For further information please contact: researchcoordinator@iwhealthgroup.co.uk</p>
<p>ITALIAN SPINONE To look at the overall health of the Italian Spinone and collect information that will help improve our knowledge on the prevalence of any existing conditions and identify any potential emerging issues, in order to improve the breed's health and welfare for future generations.</p>	<p>Click here for the survey</p>
<p>PARSON RUSSELL TERRIER To continually monitor the overall health of the Parson Russell Terrier and collect information that will help improve our knowledge on the prevalence of any existing conditions and identify any potential emerging conditions, in order to improve the breed's health and welfare for future generations.</p>	<p>Click here for the survey For further information please contact: ratscallionterrier@hotmail.co.uk</p>
<p>PARSON RUSSELL TERRIER To establish the level of DNA testing for a range of genetic disorders in UK registered Parson Russell Terriers.</p>	<p>Click here for the survey For further information please contact: ratscallionterrier@hotmail.co.uk</p>
<p>PUG To investigate the outcome of Pugs suffering with mast cell tumours in the UK. The study will assess the effects of gender, neuter status, and body condition score on the potential outcome of each dog.</p>	<p>Click here for the survey For further information please contact: sv-dogs@nottingham.ac.uk</p>
<p>PYRENEAN SHEEPDOG To look at the overall health of the Pyrenean Sheepdog and collect information that will help improve our knowledge on the prevalence of any existing conditions and identify any potential emerging issues, in order to improve the breed's health and welfare for future generations.</p>	<p>Click here for the survey For further information please contact: psdhealthsurvey@btinternet.com</p>
<p>SKYE TERRIER Researchers at the University of Cambridge are investigating liver disease in Skye Terriers (commonly known as 'Skye Terrier hepatitis') to try to understand the underlying cause and genetics of the condition.</p>	<p>Click here for the survey</p>
<p>STANDARD POODLE Standard Poodles can sadly be affected by bloat (otherwise known as gastric dilation, GD); which can sometimes lead to the emergency condition of "twisted stomach" (GDV). The University of Nottingham together with the Standard Poodle breed club have developed a new survey, which aims to identify approaches that can reduce the likelihood of one or both conditions happening.</p>	<p>Click here for the survey For further information please contact: health@thekennelclub.org.uk</p>
<p>ST BERNARD To look at the overall health of the St Bernard and collect information that will help improve knowledge on prevalence of any existing conditions and identify any potential emerging issues, in order to improve the breed's health and welfare for future generations.</p>	<p>Click here for the survey For further information please contact: t.booth73@ntlworld.com</p>
<p>WELSH SPRINGER SPANIEL To look at the overall health of the Welsh Springer Spaniel and collect information that will help improve our knowledge on the prevalence of any existing conditions and identify any potential emerging issues, in order to improve the breed's health and welfare for future generations.</p>	<p>Click here for the survey For further information please contact: health@thekennelclub.org.uk</p>
<p>WEST HIGHLAND WHITE TERRIER Breed Health Survey studying pulmonary fibrosis in the breed. Survey open to dogs of any age, healthy and affected dogs, and dogs that have previously died as a result of fibrosis.</p>	<p>Click here for the survey</p>
<p>The Kennel Club would like to invite you to advertise your up-coming health-related clinic, seminar or survey on the health pages of The Kennel Club website and in The Kennel Club Journal. Please allow plenty of notice before the actual event.</p> <p>To submit your health-related clinic, seminar or survey for advertisement, please complete the relevant form on our website:</p> <p style="text-align: center;">Health-related clinic Health-related seminar Health-related survey</p>	

Multi-Breed Health Screening Clinics

Eye Scheme examinations

(Canine Health Scheme BVA/KC/ISDS)

	DATE	LOCATION	PANELLIST	CONTACT
DECEMBER	2nd	Bletchingly, Surrey	Emily Jeanes	Please email North Downs Specialist Referrals
	3rd	Totnes, Devon	John Mould	Please email devon@optivet.com
	7th	Upton Rugby Club, Upton, Pontefract	James Rushton	Book online at https://www.kirkbournspaniels.co.uk/bvakceyescheme
	8th	Detling	James Oliver	https://jovo.org.uk
	9th	Peterborough	Ioannis Tzouganakis	Please email Vet Eye Care or call 01733 304364
	10th	Havant, Hampshire	John Mould	Please email Optivet Referrals
	11th	Leominster	John Mould	Book online at Eye Vet Clinic http://www.eyevetclinic.co.uk
	13th	Potters Bar	Christiane Kafarnik	Please email QMHBVAenquiry@rvc.ac.uk or call 01707 666366
	16th	Bletchingly, Surrey	Emily Jeanes	Please email North Downs Specialist Referrals
	16th	Peterborough	Ioannis Tzouganakis	Please email Vet Eye Care or call 01733 304364
	20th	Worksop	James Oliver	https://jovo.org.uk
	23rd	Peterborough	Ioannis Tzouganakis	Please email Vet Eye Care or call 01733 304364
	30th	Bletchingly, Surrey	Emily Jeanes	Please email North Downs Specialist Referrals
	30th	Peterborough	Ioannis Tzouganakis	Please email Vet Eye Care or call 01733 304364

Heart Testing by Auscultation and Respiratory Function Grading

(KC/UoC RFG Scheme)

	DATE	LOCATION	PANELLIST	CONTACT
JAN	25th	Preston, Lancashire	Dr Laura Hamilton	Contact Fit and Fertile (fitandfertile@aol.com) or visit their website www.fitandfertile.com

KC File for December

AMENDMENT TO BREED STANDARDS

At its recent meeting the Board approved the following amendment to the wording of the Breed Standards introductory clause:

If a feature or quality is desirable it should only be present in the right measure. However, if a dog possesses a feature, characteristic or colour described as highly undesirable **unacceptable**, it must not be rewarded in the show ring.'

(Deletion struck through, Addition in bold)
(Effective from 1 January 2025)

DISQUALIFICATIONS

At its meeting of the 23 July 2024 the Show Executive Committee made the following disqualifications:

Mrs B Part – Chihuahua (Long Coat) – **STARCEYLON MOON FLOWER AT FAIRYWINGS** – F(1)8.1

• Scottish Kennel Club – May Championship Show – 16-19 May 2024 – 1st Minor Puppy Bitch

• Scottish Kennel Club – October Championship Show – 16-19 May 2024 – 1st Minor Puppy Bitch, Reserve Bitch Challenge Certificate & Best Puppy

Mrs M & Miss J Hutchinson – Maltese – **DANY'S V-FRED AT AREOWN (IMP ROM)** – North East of England Toy Dog Society – Championship Show – 14 July 2024 – 1st Special Beginners Dog/Bitch – F(1)8.1

At its meeting of the 1 October 2024 the Show Executive Committee made the following disqualifications:

Ms PJ Forrest & Mrs R Lucas – West of England Ladies' Kennel Society – Championship Show – 25-29 April 2024 – St Bernards – F(1)8.1

• **BERMONT SERGEANT AT PHILANDROS** – 2nd Minor Puppy Dog

• **BERMONT ALLO ALLO AT PHILANDROS** – 2nd Puppy Dog

Miss M Sojka – Crufts – Championship Show – 7-10 March 2024 – Chinese Crested – F(1)8.1

• **HYADE EMPATHIE (ATCAZ92112DEU)** – 2nd Limit Bitch

• **LIBITINA EMPATHIE (ATCBA33576DEU)** – 1st Minor Puppy Bitch

Mrs Holmes – Retriever (Flat Coated) – **RYDANAH DEVILS IN THE DETAIL** – F(1)8.1

• Northern England Flatcoated Retriever Association – Championship Show – 5 May 2024 – 1st Novice Bitch

• Northern England Flatcoated Retriever Association – Open Show – 5 May 2024 – 1st Novice Bitch

PENALTIES & FINES

At its meeting of the 23 July 2024 the Show Executive Committee imposed the following penalties:

Breach of Regulation F(1)22.d.1 – Late submission of Judges' Nomination

• Tyne Wear & Tees Boxer Club – Championship Show – 4 May 2024 – Warned and fined £50

• Rottweiler Club – Championship Show – 6 April 2024 – Warned and fined £50

• Birmingham and Midland Counties Bulldog Club – Championship Show – 11 May 2024 – Warned and fined £50

• Welsh Corgi Club of Cambria – Championship Show – 7 June 2024 – Warned and fined £50

At its meeting of the 1 October 2024 the Show Executive Committee imposed the following penalties:

Breach of Regulation F11.b – Dog not under control

• Mrs B Brown – Leonberger – **DAVENHEATH GUILTY PLEASURE TO BRENALJAY** – Hitchin & District Canine Society – Open Show – 21 April 2024 – Warned

• Mrs K Jones – Staffordshire Bull Terrier – **KAMARISTAFFS ROYAL RUMOUR** –

• Scottish Kennel Club Championship Show – 16-19 May 2024 – Warned

Breach of Regulation F(1)22.d.1 – Late submission of Judges' Nomination

• South Wales Papillon Club – Championship Show – 12 October 2024 – Warned and fined £50

• English Setter Society of Scotland – Championship Show – 16 June 2024 – Warned and fined £50

• Northern Boston Terrier Club of England – Championship Show – 21 June 2024 – Warned and fined £50

• Curly Coated Retriever Club – Championship Show – 13 July 2024 – Warned and fined £50

• West Of England Collie Society – Championship Show – 21 July 2024 – Warned and fined £50

At its meeting of the 15 October 2024 the Judges Committee imposed the following penalties:

Breach of Regulation F(1)20.d – Failure to submit a critique

• Miss H Cooper – Belgian Shepherd Dog (Malinois) – Birmingham Dog Show Society Ltd – Championship Show – 4-7 May 2023 – Fined £50

• Mr P Singer – Boston Terrier – East of England Agricultural Society – Championship Show – 6-9 July 2023 – Fined £50

• Mrs NV Evans – Airedale Terrier – Welsh Kennel Club – Championship Show – 17-20 August 2023 – Fined £100

• Mr S Proctor – German Shepherd Dog – Merioneth Agricultural Society – Open Show – 23 August 2023 – Fined £50

• Ms C Winwood – Staffordshire Bull Terrier – Staffordshire Bull Terrier Club – Open Show – 2 September 2023 – Fined £50

• Mr J Hunt – Terrier Breeds – Romsey and District Canine Society – Open Show – 1 October 2023 – Fined £50

• Mrs J A Cule – German Shorthaired Pointer Club – Championship Show – 21 January 2024 – Fined £150

• Mr R Lemon – Keeshond – Taunton & District Canine Association – Open Show – 6-7 January 2024 – Fined £50

• Mrs L Moss – Dalmatian – Guildford and District Canine Society – Open Show – 18 February 2024 – Fined £50

• Mrs P Lane-Ridyard – Any Variety Not Separately Classified Gundog and Italian Spinone – Ilfracombe & District Canine Society – Open Show – 10 February 2024 – Fined £50

• Mrs M Petersen – Pekingese and Bolognese – Crufts – Championship Show – 7-10 March 2024 – Fined £50

DISCIPLINARY COMMITTEE

31 October 2024
Kennel Club Rule A12
Miss Sharon Gladwell

The Committee carefully considered the conviction of Miss Sharon Gladwell of Hale, Cornwall for causing unnecessary suffering contrary to the Animal Welfare Act 2006 from the Bodmin Magistrates' Court on 18 June 2024.

The Committee imposed the following penalties:

- To disqualify her from exhibiting at, taking part in, attending and/or having any connection with any event licensed by the Club. If any person disqualified under this sub-paragraph shall attend any canine event whilst disqualified the Board shall have the power to increase the period of disqualification [A11 j (4)]
- To disqualify her from being or becoming a member of any canine club or society registered with or affiliated to the Kennel Club [A11 j (5)]
- To disqualify her from acting as an Officer or serving on the Committee of any canine society [A11 j (6)]
- To disqualify her from taking part in the management of any event licensed by the Club [A11 j (7)]
- To disqualify her from judging at any event licensed by the Club [A11 j (8)]
- To disqualify her from effecting registrations of any or all dogs and/or progeny of such dogs which are owned and/or registered by her (whether or not jointly owned and/or whether or not owned and/or registered in the name of a nominee) [A11 j (9)]

The suspensions and disqualifications are to be for life from 31 October 2024.

The Committee noted that Miss Gladwell pleaded guilty to a charge of causing unnecessary suffering to a dog, namely the infliction of blunt force trauma, physical violence and intimidatory behaviour, and she knew or ought reasonably

to have known that the act would have that effect or be likely to do so.

The Court imposed a fine.

The Committee's view was that this was an extremely distressing act of cruelty towards the dog, exacerbated by the fact that the dog was whelping at the time of the offence.

Miss Gladwell is an experienced breeder and therefore should have been aware of the seriousness of her actions. Miss Gladwell has offered no mitigation or contrition for her actions in this process.

It is not acceptable to risk the health and welfare of any animal or to deliberately inflict pain upon an animal by actions such as were involved in this case. This is entirely incompatible with being associated with and using Kennel Club registration facilities.

The Committee's view was that a lifetime disqualification from Kennel Club regulated activities is appropriate to reflect the seriousness of the matter.

The Kennel Club Accredited Instructors Scheme



The Kennel Club Accredited Instructors scheme offers its members the opportunity to gain a nationally-recognised vocational accreditation based on a robust standard set by The Kennel Club. It is the first and only scheme for dog training instructors and behaviourists that has achieved programme accreditation from City & Guilds, a globally-recognised benchmark of quality.

This section of The Kennel Club Journal is dedicated to Kennel Club Accredited Instructor members. It provides information on the resources available to members, announcements on newly awarded Kennel Club Accredited Instructors, and KCAI Scheme news and updates.

For more information on the KCAI Scheme, please visit: <https://www.thekennelclub.org.uk/dog-training/kennel-club-accredited-instructors/>

STAGES TO ACHIEVE ACCREDITATION TO BECOME A KENNEL CLUB ACCREDITED INSTRUCTOR

- 1 Successful completion of all nine online assessments
- 2 Submission of the accreditation application
- 3 Accreditation Application is reviewed
- 4 Practical and oral assessment conducted
- 5 Application outcome

SUPPORT WITH APPLYING FOR ACCREDITATION

The Accreditation Adviser and KCAI Team are available to provide you with support and guidance with the accreditation application process, please contact the us at kcai@thekennelclub.org.uk

KCAI RESOURCES AND GUIDANCE

This can be accessed via the Kennel Club website and contains all of the information related to the scheme and the relevant documents to help support members that are working towards accreditation. You can access this [here](#)

For the Members

OBITUARY

It is with sadness that The Kennel Club wishes to record the deaths of the following members:

Mr M Andrew and Mr D Scawthorn.



Subscribe to the Kennel Gazette from £30 a year

- 12 issues of The Kennel Gazette
- 10% off selected Crufts and Discover Dogs tickets
- 10% off selected Kennel Club publications
- A copy of The Kennel Club Annual Report
- An affiliate loyalty card and pin badge

To find out more about becoming an affiliate member or to purchase, visit: thekennelclub.org.uk/shop/memberships/kennel-club-affiliates/

Judges

Following announcements that the newly elected Members of the Judges Committee would not be accepting invitations to award CCs for new breeds during their term of office - any relevant appointments listed below for these individuals were accepted before they were elected to these positions.

'GRANDFATHERING' PRE-APPROVED JUDGES

At its meeting held on 15 October 2024 the Judges Committee approved the following applications from judges to be listed at Judges Education Programme (Breed Shows) Level 4 (approved to award Challenge Certificates), Level 5 (approval to judge a Group) and Level 6 (approval to judge Best in Show). Judges approved via this route, when nominated to judge the relevant breed with Challenge Certificates/Group or Best in Show need not complete a further Judge's Questionnaire.

Further details and the criteria for A3 grandfathering applications can be found at www.thekennelclub.org.uk/jep

HOUND GROUP

Basenji Mrs T Boyles
Basset Hound..... Mrs R Barney
Basset Hound..... Mrs D Reid
Irish Wolfhound Dr J Wilkes
Whippet..... Mrs C Richards-Healon

GUNDOG GROUP

Bracco Italiano Mrs H Male
Bracco Italiano Mr R McMaster
Bracco Italiano Mrs J Millard
Brittany Miss J Pretty
German Shorthaired Pointer Mr E Casey
German Wirehaired Pointer Mr A Cook
German Wirehaired Pointer Mr J Newton
Hungarian Vizsla Mrs T McDonald
Hungarian Vizsla Mrs EA Orzel
Irish Red & White Setter..... Mr N Worth
Italian Spinone..... Mrs D Wagh
Lagotto Ramagnolo Mrs EA Orzel
Retriever (Curly Coated) Miss F Valentine
Retriever (Golden) Miss D Creaney
Retriever (Golden) Mrs P O'Gorman
Spaniel (Cocker) Mrs D Bayliss
Spaniel (Field) Mr DJ Telford

TERRIER GROUP

Australian Terrier..... Mr EC Allen
Australian Terrier..... Mrs R Barney
Border Terrier Mr JR Mann
Fox Terrier (Smooth)..... Mr M Ord
Jack Russell Terrier Mr M Ord
Jack Russell Terrier Mr GB Robertson
Sealyham Terrier..... Mrs J Moakes
Soft Coated Wheaten Terrier Mr M Ord

UTILITY GROUP

Boston Terrier Mr SR Goodwin
Boston Terrier Mr S Luxmoore
Bulldog..... Ms K Rudd
Dalmatian Miss L Barrett
French Bulldog Mr G Ling
Japanese Spitz..... Mrs S Butterfield
Japanese Spitz..... Mr K Greenland
Keeshond..... Mr S Jones
Keeshond..... Mr C Toynton

WORKING GROUP

Boxer..... Mrs A Lunt
Bullmastiff Miss M Hodgson
Newfoundland..... Mrs P Luxmoore-Ball

PASTORAL GROUP

Australian Shepherd Miss L Bermingham
Australian Shepherd Miss J Cutler
Belgian Shepherd Dog (Groenendael) .. Miss J Cutler
Collie (Rough)..... Mrs M Withers
Collie (Smooth)..... Mrs K Kennedy
Finnish Lapphund..... Mrs K Angier
Norwegian Buhund..... Mr B Blunden
Norwegian Buhund..... Mr K Greenland
Polish Lowland Sheepdog Mr RC Kinsey
Pyrenean Mountain Dog Mrs D Rowan
Welsh Corgi (Cardigan) Miss K Frosdick

TOY GROUP

Bolognese..... Mr K Morgan-Stanley
Bolognese..... Mr G Thomas
Cavalier King Charles Spaniel..... Mrs C Rhodes
Chinese Crested..... Mr LJ Hunt
English Toy Terrier (Black&Tan).... Mrs E Waddington
Italian Greyhound Mrs M Kendall
Japanese Chin..... Mr C Jones
Lowchen (Little Lion Dog)..... Mr M Garnham
Pekingese Mrs L Ratter
Pomeranian Mrs A Norman

Group Applications

Pastoral Group..... Miss J Cutler
Terrier Group Miss FA Snook
Toy Group..... Mr G Haran

CHALLENGE CERTIFICATES

At its meeting held on 15 October 2024 the Judges Committee approved the following nominations to award Challenge Certificates & to judge Groups & Best in Show.

D = Dog
B = Bitch
BIS/R = Best In Show/Referee where applicable
* Approved for the first time

The Judges Committee did not approve 18 nominations to judge.

2024

West Of England Ladies Kennel Society 25/04/2024

Mrs S Duffin Polish Lowland Sheepdog

Bullmastiff Society Of Scotland 15/06/2024

Mr J Williams (Netherlands).....Bullmastiff

English Setter Society Of Scotland 16/06/2024

Mrs TA Lewis English Setter D
Mrs VJ McLoughlin English Setter B
Mrs J Armstrong English Setter R

Northern Boston Terrier Club Of England 21/06/2024

Ms EA Ingram (Ireland) Boston Terrier

Curly Coated Retriever Club 13/07/2024

Mr AM Knight Retriever (Curly Coated)

Northern Pug Dog Club 14/09/2024

Mr R Hitchcock Pug D
Mr AD Stewart Pug R

Downlands Staffordshire Bull Terrier Club 21/09/2024

Mr SD Whitehouse Staffordshire Bull Terrier R

Welsh Corgi Club Of Ulster 29/09/2024

Mr KA Nathan.....Welsh Corgi (Pembroke)

English Ibizan Hound Club 05/10/2024

Miss SE Clark Ibizan Hound

South Wales Papillon Club 12/10/2024

Miss S Langdon Papillon

Dandie Dinmont Terrier Club 25/10/2024

Mr M Phillips Dandie Dinmont Terrier

Berkshire Downs & Chilterns Golden Retriever Club 03/11/2024

Mrs J Muncey Retriever (Golden) R

Northern Pug Dog Club 03/11/2024

Miss V Cox Pug D
Mrs M Trossell Pug R

Eastern Counties Golden Retriever Club 09/11/2024

Mrs S Hush Retriever (Golden) R

Shar-Pei Club Of Great Britain 10/11/2024

Ms J Webb Shar Pei

West Country Chihuahua Club 10/11/2024

Mr N Farrugia Best in Sub Group (Chihuahua)

Northern Japanese Spitz Club 17/11/2024

Mrs GJ Lilley Japanese Spitz

Staffordshire Bull Terrier Club Of South Wales 17/11/2024

Mr M van Wijk (Netherlands)Staffordshire Bull
Terrier D
Mr MA JohnStaffordshire Bull Terrier B

South Wales Papillon Club 23/11/2024

Mrs P Cox Papillon

Midland Cavalier King Charles Spaniel Club 30/11/2024

Mrs LR Goodgame ...Cavalier King Charles Spaniel R

Notts & Derby District Bull Terrier Club 01/12/2024

Mr D Hackett Bull Terrier

British Utility Breeds Association 07/12/2024

Miss GME Claxton Chow Chow
Mr KA Nathan Miniature Schnauzer
Miss D Spavin Tibetan Terrier

Ladies Kennel Association 12/12/2024

Mrs A LevyStaffordshire Bull Terrier

2025

Irish Setter Club Of Wales 12/01/2025

Mrs L Armstrong-Rodgers Irish Setter D
Mr AH Brace Irish Setter D
Mrs L Murray Hogsflesh Irish Setter B
Miss ES Ciechonska Irish Setter B

Southern Dogue De Bordeaux Society 17/01/2025

*Mr WJ BrittleDogue de Bordeaux

Rhodesian Ridgeback Club Of Great Britain 18/01/2025

Mr MJ HouseRhodesian Ridgeback

Golden Retriever Club Of Wales 09/02/2025

Mr RJ Morris Retriever (Golden) D
Miss AG Cooper Retriever (Golden) B
Mr R Greenwood Retriever (Golden) R

Judges

Mastiff Association

15/02/2025

Mr BFS Sabroe (Denmark) Mastiff

Shih Tzu Club

16/02/2025

Mr S Brown Shih Tzu

Scottish Shetland Sheepdog Club

16/02/2025

Mrs M Lambert Shetland Sheepdog D
Mrs A Heald Shetland Sheepdog B

British Manchester Terrier Club

22/02/2025

*Mrs JL Thurlow Manchester Terrier

Northern Dogue de Bordeaux Club

22/02/2025

Mr J Luscott Dogue de Bordeaux

Midland Yorkshire Terrier Club

23/02/2025

*Mrs M Skarulska Yorkshire Terrier

Midlands Border Collie Club

15/03/2025

Mr J Ritchie Border Collie D
Mrs SD Ader Border Collie B
Mrs PA Wilkinson Border Collie R

South Wales Boxer Club

16/03/2025

Miss L Clayforth Boxer

Scottish Breeds Canine Club

29/03/2025

Mr R McMaster Gordon Setter
Mrs A Scutcher Retriever (Golden) D
Mrs V Robertshaw Retriever (Golden) B
Mr GR Haran Retriever (Golden) R
Mr W Browne-Cole Cairn Terrier
Mr JH W Falconer Skye Terrier
Mr W Browne-Cole West Highland White Terrier
Mrs JM Palmer Bearded Collie
Mrs CA Collins Collie (Rough)
Mrs J Miles Shetland Sheepdog
Mr GR Haran Best in Show

United Kingdom Toydog Society

29/03/2025

*Ms EA Ingram (Ireland) Miniature Pinscher

West Pennine Pug Dog Club

29/03/2025

*Miss E Morley Pug D
Mrs S Macdonald Pug B
Mrs A Mount Pug R

Irish Setter Breeders Club

29/03/2025

Mr D McCulloch Irish Setter D
Mrs S Clifford Irish Setter B

Hungarian Wirehaired Vizsla Club of Great Britain

30/03/2025

Mrs CA Coode Hungarian Wire Haired Vizsla

Cairn Terrier Club

30/03/2025

Mr RHJ Croyman Cairn Terrier

Northern Golden Retriever Association

05/04/2025

Mrs S Magson Retriever (Golden) D
Ms T Ewart Retriever (Golden) B
Mrs BE Athey Retriever (Golden) R

North Of England Airedale Terrier Club

05/04/2025

Mr G Corish Airedale Terrier

Mancunian Boxer Club

05/04/2025

Miss V Bell Boxer

Northern Borzoi Association

06/04/2025

*Mrs C Gredys (United States of America) Borzoi

Birmingham Invicta Pekingese Club

06/04/2025

Mr A Easdon Pekingese

Scottish Dachshund Club

12/04/2025

Mr D McCalmont Dachshund (Miniature Long Haired)
Mrs D Kirkwood-Emery Dachshund (Miniature Smooth Haired)
Mr M Oddie Dachshund (Smooth Haired)
Mr SJ Parsons Dachshund (Miniature Wire Haired)

Gordon Setter Association

12/04/2025

Mrs J Harrison Gordon Setter

Scottish Utility Breeds Club

12/04/2025

Mr A Wight German Spitz (Klein)
Mr J Luscott German Spitz (Mittel)
Mr M Vincent Japanese Shiba Inu
Mr J Luscott Keeshond

Eastern Counties Cavalier King Charles Spaniel Society

12/04/2025

Mrs C Gibson Cavalier King Charles Spaniel

Eastern Counties Yorkshire Terrier Club

12/04/2025

Mr J Magri Yorkshire Terrier

Cocker Spaniel Club Of Scotland

13/04/2025

Ms GM Birkenshaw Spaniel (Cocker) B

Southern Border Collie Club

13/04/2025

Mr JT Smith Border Collie D

Griffon Bruxellois Club

13/04/2025

Mr J Swinge Griffon Bruxellois

Smooth Fox Terrier Association

19/04/2025

Ms JM Griffiths Fox Terrier (Smooth)

Working & Pastoral Breeds Association Of Wales

19/04/2025

Mr RC Kinsey Bullmastiff
Mrs Y McGlynn Great Dane
Mrs DS Charwin Leonberger
Mrs AP Springthorpe St. Bernard

Hadrian Basset Hound Club

20/04/2025

Mr RAJ Smits (Netherlands) Basset Hound

Northern Saluki Club

20/04/2025

Mrs MH Fulcher Saluki

Pennine & Scottish French Bulldog Association

20/04/2025

Mr D Hick French Bulldog

Eastern Bearded Collie Association

21/04/2025

Mr RE Fletcher Bearded Collie D
Mrs SJ Ritchie Bearded Collie B
Mrs FM Chapman-King Bearded Collie R

West Of England Ladies Kennel Society

24/04/2025

*Mr LA Johnston Beagle
*Mrs J Strong Whippet
*Miss HL Howard Hungarian Vizsla
*Mr S Layton Hungarian Wire Haired Vizsla
*Mr G Leighton Cairn Terrier
*Mr FH Whyte Dobermann
*Mrs L Esders Dogue de Bordeaux

*Ms M Sargent Bearded Collie
Mrs J Guvercin Border Terrier
Mr DE Jones Bull Terrier (Miniature)
Mr P Singer Boston Terrier
Mrs CL Bannister Bulldog
Ms E Cannon Chow Chow
Mr TD Mather Dalmatian
Mr E Casey French Bulldog
Lady KS Hickson Japanese Shiba Inu
Mrs J Bannister Japanese Spitz
Mrs CT Lambert Keeshond
Mrs A Pickburn Lhasa Apso
Mrs F Krall Miniature Schnauzer
Mrs AK Saunders Poodle (Miniature)
Mr J Horswell Poodle (Standard)
Mr AT Sheppard Poodle (Toy)
Mr MR Veal Schnauzer
Mrs JD McIntyre Shih Tzu
Mrs JB Gripp Tibetan Spaniel
Mrs M Erskine-Jones Tibetan Terrier
Ms M Sargent Utility Group
Mrs K Lane St. Bernard
Mr GA Hill Working Group
Mr K Morgan-Stanley Affenpinscher
Mr SR Goodwin Bichon Frise
Mr LAS Cox Cavalier King Charles Spaniel
Mrs ED Williams Chihuahua (Long Coat)
Mr NR Marsh Chihuahua (Smooth Coat)
Mrs J Bannister Chinese Crested
Mrs P Sidgwick English Toy Terrier (Black & Tan)
Lady M Kempster Havanese
Mr LJ Hunt Italian Greyhound
Miss L Tarabad Japanese Chin
Mrs GAJ Smith King Charles Spaniel
Miss JE Baldwin Miniature Pinscher
Mr J Horswell Papillon
Mr LJ Hunt Pomeranian
Mrs S Lee Pug
Mr PF Lovel Toy Group

Cheshire Cocker Spaniel Club

04/05/2025

Miss LV Reader Spaniel (Cocker) D
Mrs J Beever Spaniel (Cocker) B

South Western English Springer Spaniel Club

04/05/2025

Ms KL Holt Spaniel (English Springer)

Northern Parson Russell Terrier Club

04/05/2025

Mrs L Bull Parson Russell Terrier

British Dalmatian Club

04/05/2025

Mr J McCarthy Dalmatian R

Birmingham Dog Show Society Ltd

08/05/2025

Mr A Allcock Maltese

Northern Griffon Bruxellois Club

11/05/2025

Mr J Purnell Griffon Bruxellois

West Pennine Pug Dog Club

11/05/2025

Mrs EA Stannard Pug D
Mr K Berry Pug B
Mrs A Mount Pug R

Scottish Kennel Club

15/05/2025

*Mrs LE Binks Basset Griffon Vendeen (Petit)
*Mr W Armstrong Basset Hound
*Miss Binks Beagle
*Mr TH Johnston Australian Cattle Dog
*Mrs JME Crawford-Manton Glen Of Imaal Terrier
*Mrs D Stewart-Ritchie Best in Show
Miss M Dillon Whippet
Mr T Graham Hungarian Vizsla
Mr H Fryckstrand (Sweden) Retriever (Curly Coated)
Mrs A Moss Spaniel (Sussex)

Judges

Mr I HopperBorder Terrier
Mr M GilchristTibetan Terrier
Mr K BaldwinBullmastiff

Scottish Kennel Club

15/05/2025

*Mr K WilliamsDalmatian
Mrs J KayDachshund (Long Haired)
Mrs J KayDachshund (Miniature Smooth Haired)
Mrs J KirkwoodGerman Shorthaired Pointer
Mr D HowarthSpaniel (English Springer)
Mrs A ChandlerSpaniel (Welsh Springer)
Mr M ArmstrongGundog Group
Miss FA SnookDandie Dinmont Terrier
Mrs EP HollingsScottish Terrier
Mr JT SmithSiberian Husky
Mrs S DuffinAustralian Shepherd
Mr A WightBorder Collie
Ms K McDevittCollie (Rough)
Mrs KA MainShetland Sheepdog
Miss AC DaviesChihuahua (Smooth Coat)
Mrs LA RushtonKing Charles Spaniel
Mrs JD ChinnPomeranian

Weimaraner Club Of Scotland

16/05/2025

Mrs PM SmithWeimaraner

Dalmatian Club Of Scotland

16/05/2025

Mr SJ FellowsDalmatian

Scottish Staffordshire Bull Terrier Club

18/05/2025

Mrs M CairnsStaffordshire Bull Terrier D
Mrs C RogersStaffordshire Bull Terrier B

Bath Canine Society

23/05/2025

*Ms A FrostBracco Italiano

Western Afghan Hound Club

23/05/2025

Mr AP BusbyAfghan Hound R

Wales & West of England Pekingese Association

24/05/2025

Mr H OgdenPekingese

Weimaraner Club Of Great Britain

25/05/2025

Mrs T SnaithWeimaraner

Polish Lowland Sheepdog Club of Wales & The

West of England

26/05/2025

Mrs J RualPolish Lowland Sheepdog

Southern Counties Canine Association

30/05/2025

Mr F KaneBracco Italiano
Mr BD DayJapanese Spitz

Whippet Club

31/05/2025

Mrs MA HolderWhippet D
Mrs R CandlerWhippet B

Pug Dog Club

31/05/2025

Mrs M TrossellPug

Pharaoh Hound Club

01/06/2025

Mr AJ BongiovanniPharaoh Hound

Cocker Spaniel Club

01/06/2025

Mrs JM CraigSpaniel (Cocker) D
Mrs D GriceSpaniel (Cocker) B
Mrs L Nobes-StrongSpaniel (Cocker) R

Alaskan Malamute Club of the United Kingdom

06/06/2025

Mrs K HowarthAlaskan Malamute

Welsh Corgi Club Of Cambria

07/06/2025

Mrs KW HewittBest in Sub Group (Welsh Corgi)

London Collie Club

08/06/2025

Mrs A FoxCollie (Rough) D
Ms SL HawkinsCollie (Rough) B
Mr M VincentCollie (Smooth)
Mr S ClarkBest in Sub Group (Collie)

United Old English Sheepdog Club

08/06/2025

Mr RP ChurcherOld English Sheepdog

Border Union Agricultural Society

14/06/2025

*Mrs S CollinsRetriever (Flat Coated)
*Mr J McGhieSkye Terrier
*Miss K JeffersonBoston Terrier
*Mrs RC WrightJapanese Shiba Inu
Mrs SM MarshallHound Group
Mrs PA PallisterIrish Setter
Mr LD SharpItalian Spinone
Mr J McGhieCairn Terrier
Mrs G GriffithsFox Terrier (Smooth)
Miss FA SnookSoft Coated Wheaten Terrier
Mr N StrawTerrier Group
Mrs L GudginMiniature Schnauzer
Mr AH BraceUtility Group
Mrs SI Pollock-YuleWorking Group
Mrs D MottramGerman Shepherd Dog
Mrs A TurnerOld English Sheepdog

Afghan Hound Club Of Scotland

14/06/2025

Mrs P Mottershaw (Channel Islands) .. Afghan Hound

Midland Bedlington Terrier Club

15/06/2025

Mrs L ButlerBedlington Terrier
Mr CR BannisterBedlington Terrier

Scottish Terrier Club (Scotland)

15/06/2025

Mrs IA HerdScottish Terrier

Scottish Dobermann Club

15/06/2025

Mrs SF HarkinsDobermann

Blackpool & District Canine Society

20/06/2025

Mrs SJ AndertonWeimaraner

Northern Poodle Club

20/06/2025

Mrs M JonesPoodle (Miniature)
Mr AJ ElrickPoodle (Standard)
Mrs SP JonesPoodle (Toy)
Ms J WebbBest in Sub Group (Poodle)

Northern Counties Chihuahua Club

20/06/2025

Mr DS P MiltonChihuahua (Long Coat)
Ms A FathersChihuahua (Smooth Coat)
Mrs P SidgwickBest in Sub Group (Chihuahua)

Northern Afghan Hound Society

21/06/2025

Mr M GriffinAfghan Hound D
Mrs PL CrackAfghan Hound B

North Of England Dobermann Club

21/06/2025

Mr A BrownDobermann

Irish Terrier Association

22/06/2025

Mr D PearsonIrish Terrier

Windsor Dog Show Society

26/06/2025

Mr BA LimpusSpaniel (American Cocker)

Southern Finnish Lapphund Society

29/06/2025

*Mrs S MooreFinnish Lapphund

Boston & District Canine Society

03/07/2025

*Miss HR JansonsDeerhound
*Mr T NagrechaBorder Terrier
*Mr A AllcockNorfolk Terrier
*Mr GB RobertsonGerman Spitz (Klein)
*Mr A AllcockPoodle (Miniature)
*Mrs S PointonSchipperke
*Mr S PayneUtility Group
*Mr D OwenMaltese
*Mrs KM McMurrayPapillon
*Ms M SargentToy Group
Mr LA JohnstonAfghan Hound
Mr M CapleBasenji
Miss D MelbourneBasset Hound
Mr GB RobertsonDachshund (Long Haired)
Mr LJ CrossDachshund (Miniature Long Haired)
Miss E Millward... Dachshund (Miniature Smooth Haired)
Mr LJ CrossDachshund (Miniature Wire Haired)
Mr A LefleyIrish Wolfhound
Miss EW NewtonSaluki
Mrs J WhiteheadWhippet
Mrs JE PainHound Group
Miss K RobertsonMiniature Schnauzer
Miss L PerfittAlaskan Malamute
Ms M SmeeBernese Mountain Dog
Mr BH BlundenBoxer
RL BainesBullmastiff
Mr J HendersonDobermann
Mrs P Luxmoore-BallDogue de Bordeaux
Mrs S ClarkGreat Dane
Mr T NagrechaLeonberger
Mr K BaldwinMastiff
Mr GB RobertsonNewfoundland
Mr SR DrinkPortuguese Water Dog
Mr JR MackenzieRottweiler
Ms S LeichSiberian Husky
Mr JT SmithSt. Bernard
Mr J LuscottWorking Group

Lancashire Heeler Association

04/07/2025

Mrs S Nilsson (Sweden)Lancashire Heeler

Lhasa Apso Club

05/07/2025

Mrs J ChalmersLhasa Apso

East Anglian Staffordshire Bull Terrier Club

06/07/2025

*Mrs A Chaine (France) ...Staffordshire Bull Terrier B

Cotswold & Wyevever Labrador Retriever Club

09/07/2025

Mr M GivanRetriever (Labrador) D
Mrs SW EllisRetriever (Labrador) B
Mr E CaseyRetriever (Labrador) R

National Working & Pastoral Breeds Society

12/07/2025

Miss M HodgsonTibetan Mastiff

Golden Retriever Club

12/07/2025

Mrs CA Gilbert.....Retriever (Golden) D
Mrs P ArnoldRetriever (Golden) B

National Bedlington Terrier Club

12/07/2025

Dr H JonesBedlington Terrier

Pyrenean Mountain Dog Club Of Great Britain

12/07/2025

Mr K BaldwinPyrenean Mountain Dog

Yorkshire Terrier Club Of South Wales

12/07/2025

Mr SC BardwellYorkshire Terrier

Judges

Southern West Highland White Terrier Club

13/07/2025

Mr GR Milner West Highland White Terrier

North East Of England Toydog Society

13/07/2025

Mrs C Lee-Slater Bichon Frise
Mr AG Schemel Chihuahua (Smooth Coat)
Mrs D Crow Chinese Crested
Mr R Forsythe English Toy Terrier (Black & Tan)
Dr AG Schemel Griffon Bruxellois
Dr AG Schemel Havanese
Dr RD J Hodges Italian Greyhound
Mrs LA Rushton Japanese Chin
Mr SR Goodwin King Charles Spaniel
Mr R Hitchcock Miniature Pinscher
Mrs C Soulsby Papillon
Mr J Ritchie Pomeranian
Mrs M Cunningham Pug
Mrs M Thorpe (Ireland) Toy Group

Midland Dachshund Club

19/07/2025

Miss L Patton Dachshund (Long Haired)
Mrs M Borsuk Dachshund (Miniature Long Haired)
Mr G McAlpine Dachshund (Miniature Smooth Haired)
Mr DR Craig Dachshund (Miniature Wire Haired)
Mrs B Baldwin Dachshund (Smooth Haired)
Mr M Oddie Dachshund (Wire Haired)
Mr JG Bennett Best in Sub Group (Dachshund)

Irish Water Spaniel Association

19/07/2025

Mrs JL Carruthers Spaniel (Irish Water)

British Rottweiler Association

19/07/2025

Mrs H McCreadie Rottweiler

Basset Hound Club

20/07/2025

Miss E Mitchell Basset Hound D
Mr SC Luxmoore Basset Hound B
Mrs HM Storton Basset Hound R

Southern Pointer Club

20/07/2025

Mrs MJ Northcott Pointer R

Golden Retriever Club Of Northumbria

20/07/2025

Mr BB Thurm Retriever (Golden) D
Mrs CE Oldring Retriever (Golden) B
Mr DW McCubbin Retriever (Golden) R

Northern English Springer Spaniel Society

20/07/2025

Mrs A Tattersall Spaniel (English Springer)

Leeds City & District Canine Association

25/07/2025

*Ms E McKnight Irish Wolfhound
*Mr MW Sanders German Wirehaired Pointer
*Mr TH Johnston Irish Setter
*Miss AL Adshead Retriever (Nova Scotia Duck Tolling)
*Mr N Connell Akita
*Mr N Connell Schipperke
*Ms S Blake Newfoundland
*Mr R Mosedale St. Bernard
*Mr TH Johnston Australian Shepherd
*Mr TH Johnston Collie (Smooth)
*Mrs B Ferguson (Australia) Bichon Frise
*Miss T McGowan Chinese Crested
*Mrs M Kendall Papillon
Mr CD Ashmore Dachshund (Miniature Wire Haired)
Mr AC Allen English Setter
Mr RJ Morris Hungarian Vizsla
Mrs SM Nicholls-Ward Spanish Water Dog
Mr G Corish Dandie Dinmont Terrier
Mr K Baldwin Glen Of Imaal Terrier
Mr G Corish Skye Terrier
Mr RE Blackley Terrier Group
Mr B Johnson Bulldog

Mr G Lilley Chow Chow
Miss L Dixon Miniature Schnauzer
Mr A Wight Portuguese Water Dog
Mr BM Croft Working Group
Mr A Wight Australian Cattle Dog
Mrs JN Eaves Belgian Shepherd Dog (Groenendael)
Mr K Baldwin Belgian Shepherd Dog (Tervueren)
Mrs D Cochran Pyrenean Mountain Dog
Mr BM Croft Samoyed
Mr A Wight Welsh Corgi (Pembroke)
Mr P Freer Cavalier King Charles Spaniel
Miss M Austin Chihuahua (Long Coat)
Mr K Morgan-Stanley Chihuahua (Smooth Coat)
Mrs J Peak English Toy Terrier (Black & Tan)
Mr G Corish Griffon Bruxellois
Mr F Kane Havanese
Mr D Crossley King Charles Spaniel
Mr F Kane Lowchen (Little Lion Dog)
Miss C Ripsher Maltese
Mr A Wight Pomeranian
Mr TD Mather Pug

Northern Cavalier King Charles Spaniel Society

26/07/2025

Mrs CE Cartledge Cavalier King Charles Spaniel D
Miss H Long Cavalier King Charles Spaniel B
Mrs S Hindle Cavalier King Charles Spaniel R

South Of England Irish Setter Club

02/08/2025

Mrs JP Mugford Irish Setter

Fox Terrier Club

02/08/2025

Mr R Delmar (Ireland) Fox Terrier (Smooth)
Mr A Calais-Adriansen (France) Fox Terrier (Wire)
Mrs E Baldwin Best in Sub Group (Fox Terrier)

Western Staffordshire Bull Terrier Society

02/08/2025

Mr MA John Staffordshire Bull Terrier D
Mr MA Marshall Staffordshire Bull Terrier B
Mr N Davies Staffordshire Bull Terrier R

Bernese Mountain Dog Club Of Scotland

02/08/2025

Mrs PL Goodyear Bernese Mountain Dog D
Mrs NS Cotton Bernese Mountain Dog B
Mrs A Wilson Bernese Mountain Dog R

Northern Newfoundland Club

02/08/2025

Mr WJ Lloyd Newfoundland

English St Bernard Club

02/08/2025

Mrs N Goodwin St. Bernard

Northern Belgian Shepherd Dog Club

02/08/2025

Mr SS Strom (Sweden) Belgian Shepherd Dog (Groenendael)
Mr SS Strom (Sweden) Belgian Shepherd Dog (Malinois)
Mr G Moore (Australia) Belgian Shepherd Dog (Tervueren)
Mr NP Grosvenor Best in Sub Group (Belgian Shepherd Dog)

Clumber Spaniel Club

03/08/2025

Mrs L Nesbitt Spaniel (Clumber)

Midland Border Terrier Club

03/08/2025

Mr K Green Border Terrier

King Charles Spaniel Club

03/08/2025

Mr AH Brace King Charles Spaniel

Bournemouth Canine Association

09/08/2025

*Mr DJ Bell Italian Spinone

*Mr E Engh (Norway) Hungarian Vizsla
*Mr E Engh (Norway) Pointer
*Mr E Engh (Norway) Staffordshire Bull Terrier
*Mr B Canty Affenpinscher
Mr GA Hill Afghan Hound
Mr D Knights Basenji
Mr D Knights Basset Griffon Vendéen (Petit)
Mr E Engh (Norway) Basset Hound
Mr N Stevens Beagle
Dr RW James Dachshund (Long Haired)
Ms M Sargent Dachshund (Miniature Smooth Haired)
Dr RW James Dachshund (Smooth Haired)
Dr RW James Dachshund (Wire Haired)
Miss S Finnott Deerhound
Mr HRI Heathcote Irish Wolfhound
Mrs C Vincent Rhodesian Ridgeback
Mrs C Fisher-Home Whippet
Mr R Mosedale Spaniel (American Cocker)
Mr IA Hardman Border Terrier
Mr MJ Presland Bull Terrier
Mr MJ Presland Bull Terrier (Miniature)
Mr JC Scanlan Cesky Terrier
Mr M Ord Manchester Terrier
Ms M Sargent Norfolk Terrier
Mr JJ Ashe Parson Russell Terrier
Mr JC Scanlan Soft Coated Wheaten Terrier
Miss N Foster West Highland White Terrier
Ms M Hobbs Dalmatian
Mr T Minton Lhasa Apso
Mrs A Draper-Andrews Tibetan Terrier
Ms CP Moffat Working Group
Mrs SP Flint Bearded Collie
Mrs P Hartfield Border Collie
Mrs N Rual-Keogh Briard
Mr KR Newhouse Collie (Rough)
Mrs MA Betts Finnish Lapphund
Mrs JL Paradise Pyrenean Mountain Dog
Miss A Haffenden Samoyed
Mr K Young Welsh Corgi (Cardigan)
Mrs C Turner Welsh Corgi (Pembroke)
Mr TM Evans Bichon Frise
Miss MJD Evans Cavalier King Charles Spaniel
Miss A Gray Chihuahua (Long Coat)
Mr D Hick Chihuahua (Smooth Coat)
Mr AD Stewart English Toy Terrier (Black & Tan)
Mr NR Marsh Italian Greyhound
Mr TJ Ball Papillon
Mr AD Stewart Pekingese
Mr J Swinge Pug
Mr K Baldwin Toy Group

Afghan Hound Club Of Wales

14/08/2025

Mrs JE Smith Afghan Hound

Pointer Club

23/08/2025

Mr M Andrews Pointer D
Mrs AM Hewitt Pointer B

Trent Boxer Club

25/08/2025

Mr CJ Aldham Boxer R

City Of Birmingham Canine Association

28/08/2025

Mrs E Dunhill Portuguese Water Dog

Welsh Springer Spaniel Club

30/08/2025

Mrs DE Bailey Spaniel (Welsh Springer)

Yorkshire Collie Club

07/09/2025

Mrs H Walder Collie (Rough) D
Mrs FI Kaye Collie (Rough) B
Mr GC Duffield Collie (Rough) R

Darlington Dog Show Society Ltd

12/09/2025

Mr SA Hollings Irish Red & White Setter

Judges

Northern Cavalier King Charles Spaniel Society 14/09/2025

Mr DK Homes Cavalier King Charles Spaniel D
*Mr Tomblom (Sweden).....Cavalier King Charles Spaniel B
Mrs S Hindle Cavalier King Charles Spaniel R

South East & East Anglian Tibetan Spaniel Society 21/09/2025

Mr RI Millar Tibetan Spaniel
Miss J Wallis-Baga Tibetan Spaniel

Irish Wolfhound Society 28/09/2025

Ms CL Pinkney Irish Wolfhound

Pekingese Club of Scotland 04/10/2025

*Mr RF MorrisonPekingese

Brittany Club Of Great Britain 04/10/2025

Miss P Grime Brittany

Bearded Collie Club Of Scotland 04/10/2025

Mr B Canty Bearded Collie

Ayrshire Collie Club 04/10/2025

Mr S Walder Collie (Rough) D
Mrs H Walder Collie (Rough) B
Mrs M Walker Collie (Rough) R

South Wales Kennel Association 09/10/2025

*Mrs A Longhurst..... Retriever (Labrador)
*Mrs JD Maxwell..... Spaniel (American Cocker)
*Mrs B Evans Cavalier King Charles Spaniel
Mr P Wilkinson Sealyham Terrier
Mrs C Bond..... Belgian Shepherd Dog (Tervueren)

English Shetland Sheepdog Club 10/10/2025

Miss D Bartholomew Shetland Sheepdog D
Mrs M Bywater Shetland Sheepdog B

Junior Bulldog Club - 2/10/2025

Ms S Lamont..... Bulldog

North Eastern German Shepherd Dog Club 12/10/2025

Miss J Cathie German Shepherd Dog

Northern Kerry Blue Club 18/10/2025

Mrs C Watson Kerry Blue Terrier

Tibetan Spaniel Association 18/10/2025

Mr L Prouve Tibetan Spaniel

Scottish Cavalier King Charles Spaniel Club 18/10/2025

Mr F Ballantine Cavalier King Charles Spaniel R

Basset Hound Club Of Scotland 19/10/2025

*Mr M Galan (Spain) Basset Hound

Akita Association 19/10/2025

Mrs J Kay Akita

Welsh And West Of England Bullmastiff Society 26/10/2025

Mr AH Brace Bullmastiff

Working & Pastoral Breeds Association Of Scotland 01/11/2025

*Mr EM Paterson..... Shetland Sheepdog
Mr G Dybdall Bernese Mountain Dog
Mrs M McArdle Boxer
Mrs M Wildman Bullmastiff
Mrs M Wildman Dogue de Bordeaux
Mr SW Hall Leonberger
Miss S Wardle Newfoundland
Mr PA Perks Rottweiler
Mr TD Mather Working Group
Mrs A Gill Bearded Collie
Mrs J Peak Belgian Shepherd Dog (Tervueren)
Mr KA Nathan Border Collie
Mr C Bithell Briard
Mr SW Hall Finnish Lapphund
Ms H Woods Old English Sheepdog
Mrs J Peak Pyrenean Mountain Dog

Beagle Association

01/11/2025

Mrs M Kingsland Beagle

Miniature Schnauzer Club 02/11/2025

Mrs CA Wareham Miniature Schnauzer

South & West Wales Cavalier King Charles Spaniel Club 02/11/2025

Mrs CP Knight Cavalier King Charles Spaniel D
Mr DK Homes Cavalier King Charles Spaniel B
Mr G Thomas Cavalier King Charles Spaniel

Gundog Breeds Association Of Scotland 15/11/2025

*Mr H Fryckstrand (Sweden) Irish Red & White Setter
*Mrs A Waskaas (Norway) Retriever (Flat Coated)
*Mrs N Davidovic (Serbia) Retriever (Golden)
*Miss V Borregaard Madsen (Denmark) Spaniel
(English Springer)
*Miss V Borregaard Madsen (Denmark) Spaniel
(Welsh Springer)
Mr S Cummings English Setter
Mrs JY Thomas German Shorthaired Pointer
Mr S Jobse (Sweden)..... Gordon Setter
Miss J Robbins Hungarian Vizsla
Miss R Lewis Irish Setter
Mrs JA Ward Italian Spinone
Mr H Stigt (Netherlands) Retriever (Labrador) D
Miss CL Morton Retriever (Labrador) B
Mr N Woods Spaniel (Cocker)
Mr H Fryckstrand (Sweden)..... Spaniel (Field)
Mrs P Butler-Holley Spaniel (Sussex)
Mr K Groom Weimaraner
Mr TD Mather Best in Show

Boston Terrier Club

16/11/2025

*Dr C Andreou (Cyprus)..... Boston Terrier

Eastern Counties Golden Retriever Club 16/11/2025

Mrs VB Clarke-Gear Retriever (Golden) R

Southern Newfoundland Club 23/11/2025

Mrs P Leech Newfoundland

West Of England & South Wales Airedale Terrier Club 30/11/2025

*D Brown Airedale Terrier

Glen Of Imaal Terrier Association 30/11/2025

*Mr D Howarth Glen Of Imaal Terrier

Midland Cairn Terrier Club

07/12/2025

Mr S Plane Cairn Terrier

2026

Giant Schnauzer Club

18/10/2026

Mrs G Staples Giant Schnauzer

Miniature Schnauzer Club

01/11/2026

Mr G Corish Miniature Schnauzer



THE KENNEL CLUB
DNA TESTING SERVICES

Get to know your dog's genetics better with The Kennel Club's DNA Testing Services

Our DNA testing kits make DNA testing simple. Order yours today by visiting our shop on The Kennel Club website.

Visit our website to find out more thekennelclub.org.uk/kcdnatesting





MAKING A DIFFERENCE FOR DOGS

**We fund projects
that give dogs healthier,
happier lives**

From investing in ground-breaking canine science and research, to funding medical and support dog training programmes and life-saving dog welfare projects, we bring cutting-edge technology, compassion and kindness to the space where dogs and people meet. Please visit our website to read more about our work and how you can help. Together, we can make a difference for dogs.



DONATE ONLINE
www.kennelclubcharitabletrust.org


THE KENNEL CLUB
 CHARITABLE TRUST

Kennel Names

The following Kennel Names have recently been granted by The Kennel Club. Objections to any of the approved Kennel Names listed below must be lodged in writing within four weeks of the publication of this Journal. If an objection is successfully upheld The Kennel Club reserves the right to revoke the Kennel Name and any subsequent registrations. Objections should be addressed to:

The Customer Services Team
Kennel Club House
Gatehouse Way
Aylesbury
HP19 8DB.

KENNEL NAME APPROVALS

ACULSIA
AEILNORR
AILEANFAOL
ALFREZOBULZ
AMICOFIDATO
ARCOTTJEM
ATLEK
AUTUMNDAX
AWLANDHAUS
BALLACLOICHE
BALLYSNOD
BAMBINIOOAS
BARROWMOUTH
BELABRISL
BELSPAK
BERSHEDA
BLAIRSGOOSE
BLEAKWICK
BONCARBO
BOTTOMDALE
BOURBIETOFF
BRAMARLEY
BRIGHTBROC
BRITANDBIRDS
BRYNCAWORTH
BUBBLYBOO
BULLBARDA
BUMBLESMINI
BURUNAS
BYRNICHE
CAILLETIER
CANAIGH
CAPTARI

CARESTONLEA
CARRIGVALE
CAZNER
CEFNUCHAF
CELTIFYRE
CERWAN
CHALKYCHOWS
CHAPELSBECK
CHENGROVE
CHIYOBEECH
CHRISTILLY
CILLEYA
CLAIBONS
CLANMERKLAN
CLASSYBEL
COBRASTAFF
COCHAGWYN
CONKATONS
COPASEREN
COPPERKINS
CRIMPLEBECK
CWMRIVER
DAMSONOAK
DAWLISHGOLD
DEKAMERON
DENDROCH
DENHERTOG
DEPIBRAC
DEVONDAKARAI
DEVONTRIEVER
DIOGOMARA
DOCKERSCROFT
DORMANSOAK
DOTDOTDACHS
DREAMDRINAGH
DREAMERDAYS
DREAMFETCH
DRUXIE
DUCHESSBORG
DUNCLETS
EASTONNESTON
EIJI
ELDRENCHI
ELMBULLZ
ELUNICO
EMSODYCH
ENCHANTBEE
ENFYSGLAS
ESGAIRLLYN
EWESWATER

FAEVALL
FARALIYA
FERNWHISK
FERNYFALLS
FIELDFAST
FINCHAM
FJORDFEN
FORGIVABULLZ
FOWLERSMOON
FOXWILDE
FURASSHU
GADARALUISG
GALLOFORD
GANNISTER
GELSOALBA
GEORDIESTOON
GLENLUSSA
GODETIA
GOLAURDERI
GOLDARNASHOT
GRIMMAULD
GROUSEPOINT
GROVEVALLEY
GWYCWMMILGI
GWYFANS
HACKETY
HADDONRYE
HAFFINITY
HAGEDORN
HAILIVER
HAIRSTCNOG
HARDIKARAGON
HAREWOODVIEW
HAUSSTARKE
HAVENLIZ
HEARTHFRIEND
HELDANI
HELENICBULLS
HERMOSAPRADO
HIGHWORKERS
HILLCHURCH
HOLLOLOW
HOPESTABLES
HOSCAR
HUFFCAP
INNAMORARSI
ISLANDAX
JACMARANGELS
JAMANDGARLOU
JAMIRES

JAZZYBEAR
JELLYPAWZ
JUSTINIAN
KALLIGRABAY
KANACOTLEY
KEEDREW
KEEVAMADIGAN
KERMOURI
KERNOWFLUFFY
KEZZOLIA
KILACABULL
KIANZOAKA
KINTARADAX
KNIGHTCOTT
KNIGHTCAVA
KNIGHTWILLOW
KRAINEZERA
LANASLIFE
LANGFORDSRED
LAROSAPEARL
LEADENLOR
LEAFENDENS
LEANNACH
LEOLEIGH
LERENGRAYMIL
LERONDE
LIDDYCOMBE
LILHASIY
LILWEENS
LINTHWAITE
LIZIBOO
LLWYNMELYN
LOCHDORA
LOCKOLEA
LOVETTICE
LOWNLAZY
LURGTILLY
MACHARSCROSS
MAGNUSRUBER
MAKHPIALUTA
MALARASSA
MALVACEAE
MANLINSON
MASKALON
MAXMADADH
MEHA
MELARAIDEN
MHANACHAINN
MILABOX
MILLASTI

Kennel Names

MINIMAJESTIC
MONTDENT
MOSSCRIPT
MOYRINO
NANKIN
NATHARRI
NEVERNIGHT
NIANNSETER
NITHVALLEY
NYMERIA
NYSAFAWN
OAKANSpan
OAKBURYHIVE
OAKGHYLL
OHAUTUI
OLLIESLIL
OPUSCANEM
OVERALBA
PADLEYHALL
PARSONSLAND
PENGEST
PETALDOWN
PINENEUK
POPLINGFIELD
PRINNIEPOMS
PUCIC
PURDEYWOOD
PURESHORES
QUESTTROUB
REDWOLD
RIVENPIKE
ROCHERRIER
ROGUSBROOK
ROOKSDENE
ROSHANUN
ROYALGOWAN
RUFFRIFT

RUMTONARY
RUSTLEFIZZ
SANHARLAKE
SCHWARZWEISS
SIAMMAE
SILVIESOL
SKAKATZU
SPARHARD
STARWELL
STYALWAYS
SUISSSNOW
SUKENZIE
SUMMMERMOOR
SUNAAMI
TAILTASTIC
TANGALLE
TARTUFO
TEALHEAD
TECLASECRET
TINTORKIRK
TIRLEBURYDAX
TOBADALE
TOLLERHOLME
TONALIBULLZ
TOPAZWIRE
TOXONHUND
TREEFENLODGE
TUMBLEDALE
ULIABISK
UNITEDUKE
VADERFORCE
VALLEYKIMBER
VIXENLAUR
VIXENLETTIE
VOLUCRIS
VONGRUNER
VONLEKENA

WAKATIPU
WATERTHISTLE
WAVENEYRIVER
WEPWAWET
WEYEKIN
WHARFESTAFF
WHITEAMORE
WIBMEISTER
WICKEDAX
WILSFORD
WINTERWELL
WYLDETTE
XANDBENJI
XENGARDS
XETY
ZEFA
ZETLANDGUN
ZIKONBURG
ZORADEN

JOINT INTERESTS

ALLENIE: Mr GT Allen & Mesdames L Hess & L Jordan
BEREYDA: Mr H & Mrs E Turton
EASNASMUIDE: Mr D & Mrs C Skinner
HAVANCE: Mr P & Miss CL Quick
HEROICGHOST: Mr S Tulloch & Miss C Jones
ROCHEVALE: Mr D & Mrs C Clayton
ROTTSWORTH: Mrs W Topping & Mr A Baillie
STAIRVALE: Mrs W Topping & Mr A Baillie

TOBERWORRY: Miss H & Mr P Foreman

SEPARATE INTEREST

BOWYDD: Miss E Jones
CEDARHURST: Mr S Jones
CONABEC: Mrs A Jaramillo
GAZZELLA: Miss C Gazzaniga
GOLDBIRCH: Mrs J Welsh
SHAMISHA: Miss A Lambert

KENNEL NAME TRANSFERS

KLOSCASTLE: Mr AJ & Mrs KM Clouston To Mr A Clouston
GLYNAFONISAF: Mr IR Parry To Mr I Parry & Miss S Robson
BABANODALMA: Mr M & Mrs AC Zaharia To Mrs A Zaharia
OTTERWOOD: Mr M & Mrs J Hollingsbee To Ms K Joy
REDGRANATE: Mr MB & Miss MB Blazejczak To Mr M Blazejczak
BLUESPRINGS: Mr MJ & Mrs LC Williamson To Mr M Williamson
PERRYGREEN: Mr TW & Mrs HS Speakman To Mr TW Speakman
DUNDALK: Mrs I & Miss S Ritchie To Mrs I & Miss L Ritchie
CAPELDEWI: Mrs SM Candler To Mr M & Mrs S Candler
SALVUSLINE: Messrs JC & B Salvado & Miss I Mardari To Mr JC Salvado



THE KENNEL CLUB

Subscribe to the Kennel Gazette from £30 a year

thekennelclub.org.uk/shop/memberships/kennel-club-affiliates/

Fees

<https://www.thekennelclub.org.uk/shop/registrations/>

REGISTRATION FEES

*FORM 1 LITTER REGISTRATION SERVICES

Puppy registration up to the age of 12 months	£23 each
Kennel Club Assured Breeder	£25 each
Non Kennel Club Assured Breeder	
Litter summary certificate - replacement copy	£5
Late litter summary	£10
Late litter registration- addition to a litter already registered	£80
Find a Puppy service	£20
Find a Puppy Service with additional advert	£25
Litter naming service	£22
Litter registration requiring registration of an overseas stud dog:	
Recording of 3 generations from a certified pedigree	£20
Recording of 5 generations from a certified pedigree	£25

OVERSEAS SERVICES

*Form 4 Registration of an imported dog (including a 3 generation pedigree)	£33
Registration of an imported dog (including a 5 generation pedigree)	£43
*Form 13 Application for an export pedigree	£53
*Form 17 Application for the re-importation of a dog	£15
*Form 14 Authority to Compete for overseas competitors	£33

KENNEL NAME SERVICES

*Form 10 Registration of a Kennel Name plus 12 months' maintenance	£70
Kennel Name annual maintenance fee (annual)	£20
Kennel Name annual maintenance fee (Direct Debit)	£18
*Form 11 Vary the ownership of a Kennel Name	£45
Preservation of a historically significant Kennel Name by a breed club (50 years)	£50
*Form 8 Change of name of a registered dog – addition of a Kennel Name	£15
*Form 16 Change of name of a registered dog – removal of a Kennel Name	£30

PEDIGREE SERVICES

Three generation pedigree	£16
Five generation pedigree	£16
Enhanced five generation pedigree	£26

ADDITIONAL SERVICES

*Form 5 Registration of one dog on the Activity Register	£20
Transfer of registered ownership	£22
*Form 7 Change of name of a registered dog (within three months of initial registration)	£30
*Form 9 Registration of a Border Collie (ISDS)	£21

*Available to download from our website at www.thekennelclub.org.uk

CLUB AND SHOW FEES

REGISTERED AND AFFILIATED SOCIETIES

REGISTRATION OF TITLE (payable on application, 50% non-returnable)	
a. Societies	£100
b. Ringcraft Clubs and Branches	£25
MAINTENANCE OF TITLE	
a. Societies (if paid by Direct Debit)	£50 (£45)
b. Ringcraft Clubs and Branches (if paid by Direct Debit)	£20 (£18)

SHOWS AND TRIALS

SHOW LICENCES	
a. General Championship Show offering more than 40 sets of Challenge Certificates, (Any additional licence approved by the General Committee, at no extra cost)	£1000
b. General Championship Show offering 40 sets of Challenge Certificates or fewer	£250
c. Group Championship Show	£250
d. Breed or Obedience or Agility Championship Show (each)	£60
e. Premier Agility, Premier Obedience or Premier Heelwork to Music Show	£45
f. General or Group Open Show	£45
g. Open Shows Competitions (each) organised by Registered Clubs or Societies	£35
h. Open Shows Competitions organised by Authorised Clubs or Societies	£60
i. Limited Shows* and competitions organised by Registered Clubs or Societies	£10
j. Limited Shows and competitions organised by Authorised Clubs or Societies	£25
k. Companion Dog Shows*	£10
l. Special Events*	£10
m. Additional fee for each dog entered (excluding dogs entered not for competition and dogs entered for classes where Challenge Certificates were not on offer)	£ 0.20
n. General canine Society Open Shows: an additional fee of £2 per class for all classes over 600.	
o. Additional fee of 5p per entry over 1,000 entries per day, up to a maximum of £100 per day for Limited and Open Agility shows organised by Authorised Clubs	
p. For Licences issued to Authorised Clubs or Societies for Open Agility Shows there would be no change to fees for up to and including the first 10 licences per year, thereafter from 11-15 licences the fee would be £150 per day and for 16 or more licences a year it would be £250 per day.	
q. For Licences issued to Authorised Clubs or Societies for Limited Agility Shows there would be no change to fees up to and including the first 10 licences per year, thereafter from 11-15 licences the fee would be £100 per day and for 16 or more licences a year it would be £150 per day.	

TRIALS LICENCES

Two/three day Field or Championship Working Trial	£35
One day Field or an Open or Members Working Trial	£25

CHANGE OF LICENCE

Voluntary change of date or issue of revised licence	£6
*To cover Licences for General, Breed and Obedience Shows, Agility Shows and Flyball Competitions, fee payable for each applicable activity.	

KENNEL CLUB COMPUTER SERVICES

In addition to the above fees, computerised documents, reports and pedigrees maybe available at rates of charges approved by the Board of Directors.

RALLY & LISTED STATUS AGILITY

The fees for Rally & Listed Status Agility are both £60. Listed Agility also has an additional fee of 5p per dog over 1000 dogs (maximum £100).

EVERY BREEDER'S NATURAL CHOICE



Our exclusive Breeder Club benefits:



GET UP TO
30% OFF



FREE FOOD FOR
YOUR LITTERS



FREE PUPPY &
KITTEN PACKS



PRICE MATCH
PROMISE



RECOMMENDATION
BONUS



FREE NEXT
DAY DELIVERY

NATURALLY **JAMES** HEALTHY
WELLBELOVED™
BREEDER CLUB



Join the JAMES WELLBELOVED™ Breeder Club today and watch your litters thrive, with free food for your litters, free puppy packs for new owners, and up to 30% off on your orders. Plus, our Breeder Team are always here to offer support and advice when challenges arise. After all, raising healthy pups is no walk in the park!

Join now at www.wellbeloved.com/pages/breeders-hub or call our Breeder Team on 0333 070 5971

Terms & Conditions apply. Full T&Cs available on JAMES WELLBELOVED™ website.

Join the club!