

The Kennel Club JOURNAL

THE OFFICIAL KENNEL CLUB PUBLICATION



MARCH 2025

News from The Kennel Club

Your monthly guide to what The Kennel Club is doing for you and your dogs straight from The Kennel Club Press Office...



Crufts international entry at all time high

As entries of the show remain buoyant

Crufts 2025 is set to welcome over 24,000 dogs at the NEC Birmingham from 6-9 March showcasing a wide variety of competitions and displays. The entry this year is over 18,500 dogs participating in breed, agility and obedience championship competitions over the four days of the event. **Continued on page 2**

In this issue...

Events	7
Field Trials	20
Seminar diaries	21
KC file for March	29
For the Members	29
Kennel Names	31
Fees	33



March Kennel Gazette

As the countdown to Crufts draws nearer the March issue of the Kennel Gazette features a profile on Patsy Hollings, our Crufts 2025 Best in Show judge, Young Kennel Club celebrates its 40th anniversary and we hear from former members and how the club has influenced where they are today. One breed to look out for at Crufts is the Polish Hunting Dog, as it makes its debut at Crufts Discover Dogs.

Continued on page 3

News from The Kennel Club

[MORE NEWS>>](#)

Crufts international entry at all time high

Continued from page 1

Over 200 pedigree breeds will compete for the prestigious Best in Show title, which will be awarded live on Channel 4 on the evening of Sunday 9 March in the BP Pulse LIVE arena. This year there will be more TV coverage than ever before, with 19 hours of Crufts action broadcast across Channel 4 and More4. Crufts continues to maintain its international flavour and this year has attracted more overseas entries than ever before – 3,952 dogs – with France leading the way with 475 dogs, just ahead of Germany (407), Netherlands (376) and Italy (360). Other countries to attract entries of 150 dogs or more are: Ireland (327), Poland (259), Belgium (213), Spain (174), Czech Republic (218) and Sweden (168).

For the first time, the Polish Hunting Dog will feature in the Discover Dogs area of the show as a newly recognised Kennel

Club breed. The Golden Retriever has the largest entry for an individual breed with 509 dogs making 619 entries. The Labrador Retriever follows closely with 485 dogs making 586 entries.

The highest number of dogs in a single breed set to compete in each group are:

- **Terrier:** Staffordshire Bull Terrier - 338
- **Hound:** Whippet - 376
- **Utility:** Dalmatian - 260
- **Toy:** Cavalier King Charles Spaniel - 290
- **Gundog:** Golden Retriever - 509
- **Working:** Bernese Mountain Dog - 159
- **Pastoral:** Border Collie - 300

Additionally, the following breeds have dogs exceeding 250; Cocker Spaniel (418), Flat Coated Retriever (309), Irish Setter (266) and Shetland Sheepdog (257).

In addition to breed class judging, visitors can enjoy watching some of the world's finest dogs and handlers in action across a range of disciplines including agility, obedience, heelwork to music, flyball and the popular hoopers display, returning for its second year.

The Obedience Championships for bitches will be held on Saturday, with dogs competing on Sunday. In Agility, the Intermediate and Large Championships take place on Thursday while the Small and Medium Championships are on the Sunday.

Other highlights in the BP Pulse LIVE arena include The Kennel Club Hero Dog Award, celebrating dogs that provide lifetime service, support, love and

“We are delighted that the show continues to draw a large overseas entry”



Celebrating 75 years of being televised, Channel 4 and More 4 will broadcast over 19 hours* of the event across the show's four days; the details of times and channels are as follows:

THURSDAY 6 MARCH:
1500-1600 - Channel 4
1830-1930 - More4
1930-2100 - Channel 4

FRIDAY 7 MARCH:
1500-1600 - Channel 4
1830-1930 - More4
1930-2100 - Channel 4

SATURDAY 8 MARCH:
1400-1800 - Channel 4
1900-2100 - Channel 4

SUNDAY 9 MARCH:
1400-1800 - Channel 4
1900-2100 - Channel 4 Crufts 2025:
Best in Show live

*Please note, times subject to change

devotion, and the final of the nation's favourite crossbreed competition, Scruffts.

Tom Mather, Crufts Chairman, said: “We are delighted that the show continues to draw a large overseas entry, proving its worldwide appeal.

“Crufts would not be Crufts without our exhibitors. We thank everybody who has entered the show and look forward to welcoming all dogs and their owners who make Crufts such a wonderful event, whether it is those who have been loyally returning year after year, or those who are experiencing the show for the first time.

“Crufts offers something for everyone and the show is set to be a wonderful showcase of our much loved dogs, exciting canine activities and our fantastic and committed community.”

[Click here](#) to view a full list of entries in each breed

For daily and Best in Show tickets, visit the [Crufts website](#)

For details of TV coverage and live streaming from the show visit the [how to watch Crufts page](#)

News from The Kennel Club

[MORE NEWS>>](#)

March Kennel Gazette

Continued from page 1

Del Richards looks back on Lord Byron's life and his beloved Newfoundland, Boatswain, whose resting place is in a marble tomb that is larger than Byron's own! This month also celebrates World Book Day and we review a new book by Shona Masters of The Story of Matilda Jacqueline Rouselle that is full of fun and adventure for our younger readers.

In health matters, we invite Wendy Beasley to share the remarkable story of how her working collie puppy Zola shattered her hip in a fateful accident and underwent a femoral head ostectomy. We also look at other options available to owners of dogs with trauma injury or disease that severely affect the hip joint.

We welcome back Carolyn Menteith, dog trainer and behaviourist, who answers your dog behaviour questions, a treat for Boston



Terrier enthusiasts from a reader who recently visited Boston in Massachusetts, and we say farewell and thank you to Bill Lambert, Executive for Health, Welfare and Breeder Services at The Kennel Club, as he retires at the end of the month.

Our breed of the month is the small and agile Australian Silky Terrier, we look at its success in the show ring,

despite still waiting on championship status, its history, which is veiled somewhat in mystery and meet 'Zym', our cover dog, and first Australian Silky Terrier to achieve a Silver Agility Warrant. The Australian Silky Terrier Breed Health Co-ordinator reports on how breeders can keep this lesser-known breed fit and strong and we hear how the breed is on top of rescue. Plus five judges choose their three favourite Australian Silky Terriers that they have judged in the show ring in the Judges' Choice.

Subscribe to the Kennel Gazette from £30 a year

If you would like to receive a copy of the Kennel Gazette why not become a Kennel Club Affiliate?

Along with all the great content included within the Gazette, being an Affiliate entitles you to 10 per cent off all Crufts tickets, 10 per cent off all Kennel Club merchandise and publications all year round and more.

For more information go to www.thekennelclub.org.uk/shop/memberships/kennel-club-affiliates/



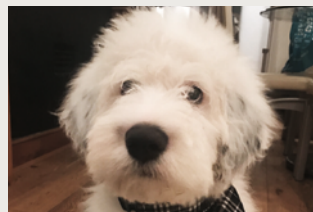
THE KENNEL CLUB
ASSURED BREEDERS

Find a puppy with the Assured Breeders scheme

Owners who buy from a Kennel Club assured breeder spend nearly 20% less in vet bills* compared to those who buy a dog elsewhere.



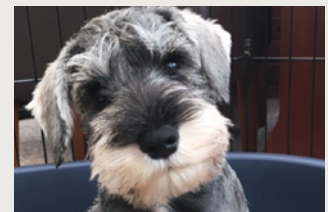
"Our dog is the light in our lives. Would always recommend a Kennel Club assured breeder."



"I love my dog because this little bundle of fluff is the best thing that ever happened to us."



"I love my dog because of the way he looks at me, his playful nature and his unconditional love!"



"I love my dog because she is my devoted best friend."

For a healthy, happy puppy always buy from a Kennel Club assured breeder and do your part to help put puppy farmers out of business.

For more information visit thekennelclub.org.uk/search/find-a-puppy

*Stats provided by Agria pet insurance.

News from The Kennel Club

[MORE NEWS>>](#)

Health testing at Crufts 2025

Kennel Club urges competitors to sign up for health testing offerings at Crufts, including discounted DNA and eye testing for all breeds, and free breathing assessments for brachycephalic breeds.

The Kennel Club is pleased to offer eye testing to all exhibitors, and free Respiratory Function Grading scheme assessments for Bulldog, French Bulldog and Pug exhibitors, at Crufts this year.

There will be 60 discounted eye testing appointments per day, giving a total of 240 appointments across the four days of the show from Thursday 6 to Sunday 9 March, for all breeds. There is morning session (from 10am to 1pm) and an afternoon session (from 2pm to 5pm).

The eye testing is booked on a first come, first served basis, and can be booked directly through **The Kennel Club website**. The BVA/KC/ISDS Eye scheme examination at Crufts 2025 costs £30.00 per dog, reduced from the £47.50 rate of a normal group session. Examinations will take place in the vet centre, located in Hall 2. Exhibitors must already have a Crufts dog pass to book an eye test appointment.

As part of its commitment to canine health, The Kennel Club is also pleased to offer free Respiratory Function

Grading scheme (RFG) assessments for Bulldogs, French Bulldogs and Pugs at Crufts.

The free assessments will be available on Friday 7 March only and will operate on a walk-in basis, with bookings taken on the day near rings 15 and 22 in Hall 4.

To continue to ensure that dog shows remain an effective platform to monitor and improve dog health, last year The Kennel Club introduced health-related entry requirements for some brachycephalic breeds for Crufts 2025 and all eligible Pugs, Bulldogs and French Bulldogs need to have a valid Respiratory Function Grading scheme assessment result to compete. Assessments must be undertaken every two years and those assessed as 'grade 3' are unable to enter the competition.

The Respiratory Function Grading scheme, developed by the University of Cambridge and The Kennel Club, assesses Bulldogs, French Bulldogs and Pugs for brachycephalic obstructive airway syndrome (BOAS). The assessment, which can be carried out by specially-trained assessors located across the UK, involves listening to the dog's airway both before and after an exercise tolerance test. Assessors then use a pre-defined protocol to grade the dog from 0 to 3. Dogs graded as 0 will be free of respiratory signs of BOAS, while dogs graded as 3 will show severe respiratory signs of BOAS, indicating that further veterinary examination is advised.

Bulldog, French Bulldog and Pug owners are encouraged to take advantage of this free assessment opportunity at Crufts to ensure their dogs have up-to-date assessments and to enable further data collection on BOAS.

Please contact The Kennel Club health team for information on how to get your dog health tested by contacting the **Health team online** or speaking directly to the team at Crufts.

Helen Kerfoot, Crufts Show Manager, said: "Crufts is a celebration of healthy, happy dogs, and we are committed to making essential health testing as accessible as possible. We hope exhibitors will take full advantage of these opportunities to help reduce the prevalence of eye disease and breathing issues in future generations."

The Kennel Club is also offering 25% off all DNA testing products at

Crufts 2025. Details on how to redeem this exclusive offer will be announced soon. More information about The Kennel Club DNA Testing Services is available at thekennelclub.org.uk/dnatesting

More information about eye testing can be found on

The Kennel Club website and the BVA website. More about The Kennel Club/University of Cambridge Respiratory Function Grading scheme for Bulldogs, French Bulldogs and Pugs is available at thekennelclub.org.uk/rfgs.

To find out more about Crufts 2025, which takes place at the NEC from 6-9 March, visit the Crufts website: crufts.org.uk.

"We hope exhibitors will take full advantage of these opportunities"

Subscribe to the Kennel Gazette from £30 a year

To find out more about becoming an affiliate member or to purchase, visit:
thekennelclub.org.uk/shop/memberships/kennel-club-affiliates/

News from The Kennel Club

[MORE NEWS>>](#)

The Kennel Club joins forces with MSP to call for ban on electric shock collars

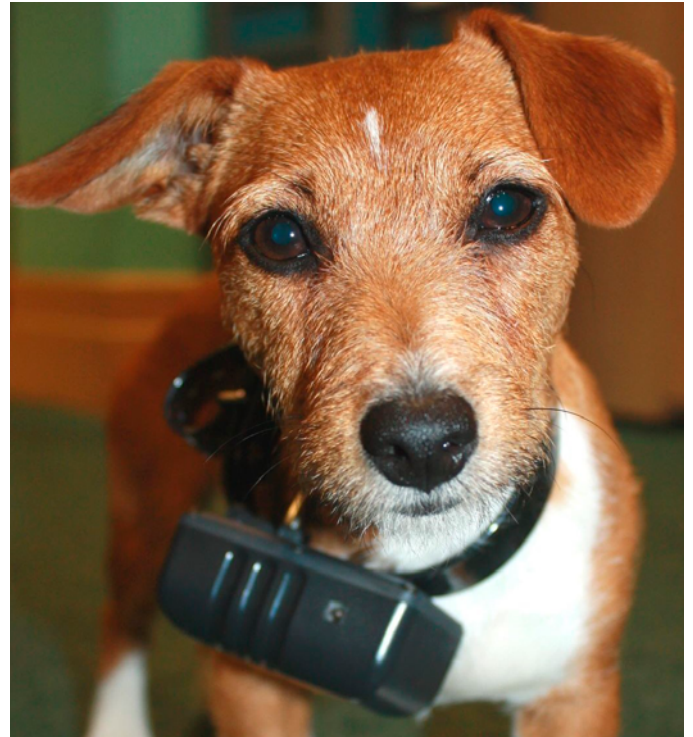
The Kennel Club has welcomed a recent motion, tabled by Maurice Golden, Scottish Conservative and Unionist Party MSP for North East Scotland, that calls on the Scottish Government to take immediate action and introduce a ban on the use of electric shock dog collars.

Electric shock collars are devices that deliver an electric shock to the dog's neck via a remote control, up to a radius of two miles – meaning a dog not within sight of its owner could still receive the stimulus - and for up to 11 seconds at a time. The Kennel Club has long campaigned for a ban on these devices, alongside other leading welfare, veterinary and dog training organisations. Wide-ranging evidence has demonstrated the detrimental effect these devices can have on the welfare of dogs and, in 2019, a study carried out by the University of Lincoln showed that electric shock collars were no more effective in training than positive reinforcement and dogs' well-being was compromised, even when used by 'professional' e-collar trainers. They have been banned in Wales since 2010 under The Animal Welfare (Electronic Collars) (Wales) Regulations.

The Kennel Club commissioned a survey in 2023 which showed over three quarters of the British public would support a ban on electric shock collars.

Following extensive research and a public consultation, the Scottish Government introduced Guidance condemning the use of shock collars in 2018, and hailed this an 'effective ban' on the use of these devices. However, the Guidance has since proven to be ineffective in stopping the use of these devices. Following this the independent Scottish Animal Welfare Commission recommended they be completely banned. Following no Government action, almost two years later, Maurice Golden MSP has tabled a motion calling on the Scottish Government to introduce

Research has shown that they can cause physical and psychological harm



Regulations to ban their use.

Maurice Golden MSP said: "It's essential the Scottish Parliament acts to ban electric shock collars with immediate effect. What's more, the ban needs to be enforceable so that no-one is left in any doubt about the seriousness of the issue.

"Stakeholders, like The Kennel Club, must be involved in this move to ensure the welfare of animals is prioritised and alternative, humane training methods are promoted."

Jannine Edgar, Chief Executive of The Kennel Club said: "The Kennel Club has long campaigned for a ban on electric shock collars and we are pleased to see that Maurice Golden MSP has

brought the issue forward once again in the Scottish Parliament.

"Our data shows that a ban on electric shock collars is supported by more than three-quarters of the population, while research has also shown that they can cause physical and psychological harm. We therefore urge the Minister for Agriculture and Connectivity to once again consider a ban on these outdated and cruel devices, to help protect the health and welfare of dogs in Scotland."

The Kennel Club are also calling on the public to write to their MSP to urge them to pledge their support for this motion.

To find out more about The Kennel Club's Electric Shock Collar campaign, please visit [thekennelclub.org.uk/campaigns](https://www.thekennelclub.org.uk/campaigns).

News from The Kennel Club

New DNA testing schemes for the Japanese Shiba Inu

The Kennel Club has approved two new official DNA testing schemes for gangliosidosis (type 1 (GM1_2) and type 2 (GM2_2)) in the Japanese Shiba Inu, following consultation with the breed's health co-ordinator on behalf of the breed.

Gangliosidosis is a progressive neurological disease that causes a range of symptoms at young age and leads to euthanasia due to poor quality of life.

The disease is believed to be an autosomal-recessive condition. This means that dogs that inherit two copies of the gene mutation (one from its mother and one from its father) will have an increased risk of developing the condition.

Tested dogs will be recorded on the Kennel Club systems as either:

CLEAR

The dog does not have any copies of the abnormal gene associated with the disease. The dog is highly unlikely to be clinically affected and will only pass on a normal copy of the gene to a puppy.

CARRIER

The dog has one copy of the normal gene and one copy of the abnormal gene associated with the disease. The dog is highly unlikely to be clinically affected, but may pass one copy of the normal gene, or one copy of the abnormal gene on to a puppy.

AFFECTED

The dog has two copies of the abnormal gene associated with the disease. The dog will likely be clinically affected by the disorder and will pass one copy of the abnormal gene on to any potential offspring.

Test results will be added to the dog's registration details which will trigger the publication of the result in the next available Breed Records Supplement and

also on the Health Test Results Finder on the Kennel Club website.

Results for dogs already tested can also be recorded, but owners will need to submit copies of the DNA certificates themselves. DNA test certificates should be scanned and emailed to **health.results@thekennelclub.org.uk**.

More information about DNA testing is available via a webinar, delivered by The Kennel Club's geneticist, Dr Joanna Ilska **The Science of DNA Testing**.

Owners are reminded that:

- from August 2018, it is mandatory that the dog's microchip (or tattoo) is recorded along with either the dog's registered name or registered number on any DNA certificates. Any test results issued after that date that do not carry these identifying features will not be accepted.
- The Kennel Club has a set of criteria that we request DNA testing laboratories to meet to enable us to record their results, helping to maintain and protect the integrity of results that appear on a dog's records. We have updated the list of laboratories that we accept results from and strongly advise that customers ensure their chosen laboratory is included on our **revised list** if they wish The Kennel Club to record and publish the results. Results from laboratories not included on this list will not be recorded.

To find out which laboratories The Kennel Club is able to record results from, and which laboratories will send results directly to The Kennel Club, please refer to **our website**. To find



out which DNA tests are relevant to your breed, visit **thekennelclub.org.uk/breeds**.

The Kennel Club constantly reviews DNA testing schemes in conjunction with breed clubs to ensure that breeders are supported with resources which help them to make responsible breeding decisions. The Kennel Club works alongside breed clubs and breed health coordinators in a collaborative effort to improve the health of pedigree dogs and is happy to consider a club's request to add a new DNA test to its lists. A formal request from the breed's health coordinator or a majority request from the breed clubs is normally required to do this.

The Kennel Club takes insights from its health data and feeds them into its Breed Health and Conservation plans, so that it can work with breeders to give information and guidance about how to ensure the future health of pedigree breeds. These plans, which enable The Kennel Club to track progress and make meaningful changes to breed health, have been developed as a result of reviewing more than 4,000 research papers, making the project the most comprehensive review of pedigree health data anywhere in the world. More information about what the organisation does for dog health is available at **thekennelclub.org.uk/health**.

Events

MARCH

March 1

- (CH) British Collie Club** The Kennel Club Building, Miss J Hodges, jopiumcollies@gmail.com
- (CH) Bulldog Club (Incorporated)** Double Tree by Hilton London, Elstree, Ms S Hanley, info@blenhiemstar.co.uk
- (CH) Cavalier King Charles Spaniel Club** Kennel Club Building at Stoneleigh Park, Mrs K Hampton Lee, secretary@thecavalierclub.co.uk
- (CH) East Anglian Labrador Retriever Club** One Leisure St Ives, Mrs A Mitchell, jane@willokin.co.uk
- (CH) North Of Ireland Pekingese Club** The Jethro Centre, Mr R Blevins, roy@pablevins.co.uk
- (CH) Scottish Terrier Breeders & Exhibitors Association** Old Mill Hall, Grove, Wantage, Mrs A Dauncey, annedauncey@aol.com
- (CH/AG) Tunbridge Wells & District Canine Society** Hadlow College, Mrs LJ Grinham, linda.grinham777@btinternet.com
- (L) York Canine Association** Thorpe Willoughby Village Hall, Mr Macklam, cml Leeds@aol.com
- (O) Cardigan Welsh Corgi Association** Mappleborough Green Village Hall, Miss Taylor, brookejennifertaylor@gmail.com
- (O) Fox Terrier Club Of Wales** Little Mill Village Hall, Mrs M Hughes, foxterrierlady@yahoo.com
- (O) Midland Cairn Terrier Club** Riddings Park Community Centre, Mrs L Firth, linda.firth@sky.com
- (O) Midland English Springer Spaniel Society** Birdwell Community Centre, Birdwell, Barnsley, Mrs K Woodward, kaywoodward30@yahoo.com
- (O) North Of Ireland Cocker Spaniel Club** St Clare Community Hall, Miss LE Bailie, thornbrook@talk21.com
- (O) North Of Ireland Pekingese Club** The Jethro Centre, Mr R Blevins, roy@pablevins.co.uk
- (O) Wath, West Melton & District Canine Society** Newark & Notts Showground, Winthorpe, Newark, Mrs C Foster, fostebriebriards@sky.com
- (O) West Riding Dachshund Association** Speedwell Rooms S43 3JL, Mrs J Kay, west-riding-dachshund@hotmail.co.uk
- (O/AG) Ogilvie Dogs** Ogilvie Dogs, Miss S Pratley
- (O/AG) Pure Agility** Dog Sports Derby, Miss L Field, laurafield22@yahoo.co.uk
- (PO) Guildford & District Canine Society** South of England Showground, Ardingley, Mrs HI Male, hilary_male@hotmail.com
- (PO) North & South Shields Canine Society** Temple Park Leisure Centre, John Reid Rd, South Shields, Mrs A Scott, poppy1709@gmail.com

March 1-2

- (PO) Ashton In Makerfield Canine Society** Sutton Leisure Centre, Sutton, Merseyside, Mrs AL Biggs, kiahmistw@gmail.com

March 2

- (CH) Brittany Club Of Great Britain** Tomlinsons Canine Centre, Ratby Road, Markfield, LE67 9RJ, Ms J Cocking, clubsecretary@brittanyclub.co.uk
- (CH) South Western Tibetan Spaniel Club** The Old Mill, Miss HJ Simper, hjs.clydum@hotmail.co.uk

(CH/AG) Tunbridge Wells & District Canine Society Hadlow College, Mrs LJ Grinham, linda.grinham777@btinternet.com

(L) Northern Counties Staffordshire Bull Terrier Club Thorpe Willoughby Village Hall, Ms B Harrison, ncsbtcsec@gmail.com

(L) Whitehaven & District Canine Association Calderbridge Village Hall, Mrs KC Newman-Jones, knj@newman-jones.com

(O) Folkestone Hythe & District Canine Society Lockmeadow Market, Mrs K Woolnough, woolnough@mchenry.plus.com

(O) Gateshead Metropolitan Borough Canine Society Temple Park Leisure Centre, South Shields, Mrs L McBeth, laurel.mcbeth@btinternet.com

(O) Golden Retriever Club Of Northumbria Bowburn Community Association, Mrs Greensmith, patriciatrotter@btinternet.com

(O) Irish Red & White Setter Club Of Great Britain The Kennel Club Building, Mrs A Bloxham, ajb@jeffbloxham.com

(O) Midland & Northern Counties French Bulldog Club Peace Memorial Hall, Mr D Spencer, honsecmncfbc@gmail.com

(O) Northern & Eastern Counties Papillon Club Carlton Village Hall, Snaith, Miss W Waters, contact@necpapillonclub.org.uk

(O) Northern Counties Chihuahua Club Lightning Club, Mrs E Waddington, spindlepoin.chis@btinternet.com

(O) Northern Counties Staffordshire Bull Terrier Club Thorpe Willoughby Village Hall, Ms B Harrison, ncsbtcsec@gmail.com

(O) Southern Border Terrier Club Steventon Village Hall, Steventon, Oxford, Mrs WMC Mooney, wendy@mooneys.co.uk

(O) West Mercia Beagle Club Peopleton Village Hall, Main Road, Peopleton, Miss DG Taylor, debbie_deaconfield@outlook.com

(O) Yorkshire Bull Terrier Club Grenoside Community Hall, Mrs S Paterson, Stephanie.aistrop@icloud.com

(O/AG) Kelluki Agility Merrist Wood College, Miss S Hatcher, sjhatcher62@hotmail.com

(O/AG) Ogilvie Dogs Ogilvie Dogs, Miss S Pratley

(O/AG) Pure Agility Dog Sports Derby, Miss L Field, laurafield22@yahoo.co.uk

(O/OB) Downlands Obedience Group Plumpton College, Ditchling Road, Plumpton, Mrs RJ Cantrell, downlandsobediencegroup@gmail.com

(PO) Coventry & District Gundog Society Sports Connexion, Miss M Morgan, michellejmorgan@gmail.com

March 4-9

(CH/WT) Lincolnshire German Shepherd Dog & All Breeds Training Soc Lincolnshire GSD & ABTS Training Ground, Mrs Hines, lgdsenquiries94@gmail.com

March 5

(O/AG) Phase Purple Agility Training West Park Equestrian Centre, Mrs F Nemeth, phasepurple@outlook.com

March 7-9

(O/WT) East Anglian Working Trials Training Society Rearing Shed, Mr Theobald, lestheobald@btinternet.com

March 8

(CH/AG) Tunbridge Wells & District Canine Society Hadlow College, Mrs LJ Grinham, linda.grinham777@btinternet.com

(O/AG) Kelluki Agility Priory Equestrian Centre, Frensham, Farnham, Miss S Hatcher, sjhatcher62@hotmail.com

(O/AG) Pawsability World Horse Welfare, Miss S Mosedale, pawsability@outlook.com

(O/AG) Phase Purple Agility Training West Park Equestrian Centre, Mrs F Nemeth, phasepurple@outlook.com

March 9

(O/AG) Agility Vision Solihull riding club, four ashes Rd, West Midlands, Mrs A Bailey, agilityvision.alex@gmail.com

(O/AG) Kelluki Agility Priory Equestrian Centre, Frensham, Farnham, Miss S Hatcher, sjhatcher62@hotmail.com

(O/AG) Make A Splash The Grange Equestrian Centre, Mrs DA Colling

(O/AG) Pawsability World Horse Welfare, Miss S Mosedale, pawsability@outlook.com

(O/AG) Phase Purple Agility Training West Park Equestrian Centre, Mrs F Nemeth, phasepurple@outlook.com

March 12-16

(CH/WT) East Riding Working Trials Society Gravesend Fishing Pond, Mrs S Lewindon, infoerwts@yahoo.com

March 13

(O/AG) Phase Purple Agility Training Oak Tree Animal Charity, Mrs F Nemeth, phasepurple@outlook.com

(O/AG) Dog Sports Derby Dog Sports Derby, Miss L Chudleigh, laura.chudleigh1@gmail.com

March 14

(O/AG) Dog Sports Derby Dog Sports Derby, Miss L Chudleigh, laura.chudleigh1@gmail.com

March 14-16

(O/WT) Icen Working Trials Club Garlands Farm, CM9 8RP, Mrs C Dean, secretary.iceni@gmail.com

March 15

(CH) Hungarian Wirehaired Vizsla Association Kennel Club Building at Stoneleigh Park, Mr K Gawthorpe, karlgawthorpe71@gmail.com

(CH) Midlands Border Collie Club Kennel Club Building at Stoneleigh Park, Miss L Wiltshire, laura_wiltshire@sky.com

(CH) South Wales Corgi Club Penyrheol Community Centre, Mrs W Rees, alan.stadwen@btinternet.com

(CH) Three Ridings Labrador Club Costello Sports Centre, Kingston Upon Hull, Mrs W Southwell, fieldtrialsec@threeeridingslc.com

Events

(O) Exeter & County Canine Society Exeter Livestock Centre, Devon, Mrs T Conibere, exeterandcountycanine@gmail.com

(O) Hungarian Wirehaired Vizsla Association Kennel Club Building at Stoneleigh Park, Mr K Gawthorpe, karlgawthorpe71@gmail.com

(O) Isle Of Wight Gundog Club Ryde Academy, Mrs S Stables, stables5979@hotmail.co.uk

(O) Lakeland Terrier Club Wreay Village Hall, Ms Hetherington, lakelandterrierclubsecretary@gmail.com

(O) Midlands Border Collie Club The Kennel Club Building, Miss L Wiltshire, laura_wiltshire@sky.com

(O) Yorkshire Terrier Club St Mary's Parish Hall, Sunbury TW16 6RN, Mrs Kudrik, ytcsec@outlook.com

(O/AG) Frittenden Dog Agility Frittenden Dog Agility, Mrs J Linch, janandianlinch@pobox.com

March 16

(CH) Border Collie Club Of Great Britain Kennel Club Building at Stoneleigh Park, Miss A Gowing, bccgb@outlook.com

(CH) Shetland Sheepdog Club Of Wales Pontypool Active Living Centre, Mr MG Light, mike.light@btinternet.com

(CH) South Wales Boxer Club Forest Oak Farm, Mr MR James, maromad@sky.com

(CH) South Western Golden Retriever Club Hutton Moor Leisure Centre, Miss S Porter, portersusan69@gmail.com

(L/AG) Cornwall Agility Club Chiverton Riding Centre, Blackwater, Cornwall, Miss N Lawer, kimlawer28@gmail.com

(O) Four Counties Beagle Club Bowburn Community Association, Mr B Foster, jphildan@aol.com

(O) Hungarian Vizsla Club Brackley Leisure Centre, Mrs H McCormack, hmccorma10@gmail.com

(O) Japanese Spitz Club Kings Stanley Village Hall, Stonehouse, Gloucestershire, Mrs EA Kirton, japspitz1@gmail.com

(O) Midland Afghan Hound Club Greasley Sports Centre, M Bloor, sec@mahc.co.uk

(O) North Staffs Canine Society Biddulph Valley Leisure Centre, Mr R Jones, robjones.loomer@gmail.com

(O) Northern Counties Sporting Terrier Association Ferryhill Leisure Centre, Ferryhill, Co Durham, Mrs G Griffiths, gillygriff61@gmail.com

(O) Oswestry & District Kennel Association Agricultural Show Ground, Nr Oswestry, Mr A White, agowhite2017@gmail.com

(O) Smoothcoat Chihuahua Club Polesworth Memorial Hall, Mrs S Hunt, serenahunt05@aol.co.uk

(O) South Wales Papillon Club Junction 24 Ltd, Mrs S Stanbury, inixia@btinternet.com

(O) South Western Toy dog Club Junction 24 Ltd, Miss A Lovell, southwesternTDC@gmail.com

(O) Southern Pointer Club Chieveley Village Hall, Chieveley, Newbury, Mrs CM Stangroom, stangroomcindy0@gmail.com

(O) West Of England Bull Terrier Club Warmley Community Centre, Warmley, Bristol, Mrs ME Hughes, maureengraymorhughes@gmail.com

(O) Woolwich Bexley & District Canine Association The Agricultural Hall, Baker Road, Mr J Swinge, balthazar.pugs@gmail.com

(O) Yorkshire Cocker Spaniel Club Thirk Farmers Auction Market, Mrs C Welch, carhowelcss@aol.com

(O/AG) Down District Dog Training Club Tullymurray Equestrian Centre, Dr JE Davis, jedavis45@hotmail.com

(O/AG) Frittenden Dog Agility Frittenden Dog Agility, Mrs J Linch, janandianlinch@pobox.com

(O/AG) QSAT Agility Club Broads Equestrian Centre, Mrs M Stone, Qsat2020@gmail.com

(PO) Retford Canine Society Newark & Notts Showground, Winthorpe, Newark, Mrs J Tune, jackierottalma@gmail.com

(PO) Spire Toy Dog Society Alfreton Leisure Centre, Mrs SL Webster, saffrosakennel@gmail.com

March 16-19

(CH/WT) Association Of Bloodhound Breeders Notgrove, Mrs E Watson, scentfynder.bloodhound@gmail.com

March 17-22

(O/WT) Hampshire Working Trials Society North Boarhunt Parish Hall, Fareham, Hampshire, Mrs C Falla, claire.falla@yahoo.co.uk

March 20

(L) Burnley & District Canine Society St Lukes Church Hall, Brierfield, Lancashire, Mr S Provost, sec.burnleydcs@yahoo.com

(O/AG) PointZero Unicorn Equestrian Centre, Mr A Clarke

March 20-23

(CH/WT) East Anglian Working Trials Training Society Rearing Shed, Mr Theobald, lestheobald@btinternet.com

March 22

(CH) Basset Griffon Vendéen Club The Kennel Club Building, Mrs DD Reid, maudaxibgv@gmail.com

(CH) South Western & Wales Poodle Club Thornbury Leisure Centre, Thornbury, Gloucestershire, Mr P Langdon, atastar@blueyonder.co.uk

(O) Basset Griffon Vendéen Club Kennel Club Building at Stoneleigh Park, Mrs DD Reid, maudaxibgv@gmail.com

(O) Beagle Club Kingsbury Youth Centre, Mrs NJ Peterson, Troopersway@yahoo.co.uk

(O) British Utility Breeds Association Kennel Club Building at Stoneleigh Park, Davies, glenandmark@live.com

(O) National Bedlington Terrier Club Thorpe Willoughby Village Hall, Miss J Oxbury, bedlingtonnational@gmail.com

(O) North East Of England Toydog Society Ferryhill Leisure Centre, Ferryhill, Co Durham, Miss W Waters, wendy.waters@sky.com

(O) Omagh & District Canine Club Ecclesville Equestrian & Leisure Centre, Fintona, Omagh, Mrs MF Johnston, glenveaghwesties@aol.com

(O) Shar-Pei Club Of Great Britain Kennel Club Building at Stoneleigh Park, Miss Denby, spcgbsecretary@gmail.com

(O/AG) Agility Ability Easton College NR9 5DU, Miss M Wright, agilityability@btinternet.com

(O/AG) Base Agility Brinsea Green Farm, Mrs CM Godfrey, cmoc@hotmail.co.uk

(O/AG) Inspire Agility Moulton College Equestrian Centre, Ms RA Abrahams, ruthabrahams3@hotmail.com

(O/AG) Kelluki Agility Merrist Wood College, Miss S Hatcher, sjhatcher62@hotmail.com

March 22-23

(O/AG) Draiocht Agility Portmore Equestrian Centre, Aghalee, Lurgan, Miss Walsh

(O/HTM) Free-Paws HTM The International Animal Behaviour and Training Centre, Miss A Briggs, free-paws@talktalk.net

March 23

(CH) Bracco Italiano Club Kennel Club Building at Stoneleigh Park, Miss D Beecham, xxpumaxx@sky.com

(CH) Kent, Surrey & Sussex Labrador Retriever Club Lockmeadow Market, Mrs A Scutcher, winsleywood@gmail.com

(CH) Midland Lakeland Terrier Club Shenstone Village Hall, Ms H Ashe, hrileyashe@gmail.com

(CH) Northern Bernese Mountain Dog Club Darlington Farmers Auction Mart, Miss SA Corrigan, shelagh59.bernese@yahoo.co.uk

(CH) Northern Samoyed Society Thorpe Willoughby Village Hall, Mr GJ Smith, NSS-secretary@hotmail.com

(CH) Nova Scotia Duck Tolling Retriever Club Of UK Kennel Club Building at Stoneleigh Park, Mrs L Palfrey, lpalfs@aol.com

(CH) Pennines Bulldog Club Speedwell Rooms S43 3JL, Mrs D Lees, l44s@aol.com

(CH) Welsh Corgi League Sketchley Grange Hotel, Hinckley, Leics., Mrs M Hoggarth, wclsexec10@aol.com

(L) Hull & East Riding Canine Society Woodmansey Village Hall, Long Lane, Woodmansey, Miss Beal, politicaltrout@hotmail.com

(L) Mannin Kennel Association Jurby Parish Hall, Miss Slann, sanslann@manx.net

(O) Basset Hound Club Of Wales Earlswood Village Hall, Mrs CM Watkins, blackveink9@gmail.com

(O) Bracco Italiano Club The Kennel Club Building, Miss D Beecham, xxpumaxx@sky.com

(O) Bridgwater & District Canine Society Junction 24 Ltd, Mr J Titchener, davidjrolfe37@gmail.com

(O) Bull Terrier Club Of Wales Miners Welfare Hall, Mrs A Probert, annekeprobert@yahoo.co.uk

(O) Chichester & District Canine Society Arun Leisure Centre, Felpham, Bognor Regis, Mrs N Coe, contact@chichestercaninesociety.co.uk

(O) Eastern Counties Dachshund Association Milton Community Centre, Mrs M Borsuc, ECDASecretary@outlook.com

(O) Eastern Counties Shetland Sheepdog Club Millennium Centre, Mrs M Gladding, flyingvicar05@gmail.com

(O) Midland Lakeland Terrier Club Shenstone Village Hall, Ms H Ashe, hrileyashe@gmail.com

(O) North West Border Collie Club Whiston Town Hall, Miss TJ Irving, richardsonjean557@gmail.com

(O) Northern Border Terrier Club Bowburn Community Association, Mrs C Horner, allenhorner1@btinternet.com

(O) Northern Counties Chow Chow Club Denshaw Village Hall, Saddleworth, Lancashire, Miss AM Foy, Northerncountiesccc@gmail.com

Events

(O) Northern Samoyed Society Thorpe Willoughby Village Hall, Ms M Short, NSS-secretary@hotmail.com

(O) Southern Counties Staffordshire Bull Terrier Society Navestock Village Hall, Mr KJ Meneer, scsbts1937@gmail.com

(O) Welsh Terrier Club Polesworth Memorial Hall, Mr JA Barney, julien.barney@gmail.com

(O/AG) Agility Ability Easton College NR9 5DU, Miss M Wright, agilityability@btinternet.com

(O/AG) Draiocht Agility Portmore Equestrian Centre, Aghalee, Lurgan., Miss Walsh

(O/AG) Inspire Agility Moulton College Equestrian Centre, Ms RA Abrahams, ruthabrahams3@hotmail.com

(O/AG) KS Training The Grange Equestrian Centre, Miss K Stickney, kathrynstickney@btinternet.com

(PO) Herts & Essex Border Canine Society Forest Edge Arena, Mr D Bedford, celebrant897@outlook.com

March 24

(O) Pennine & Yorkshire Welsh Corgi Association Whiston Village Hall, Miss TJ Irving, twinancorgis@aol.com

March 24-29

(CH/WT) British Association For German Shepherd Dogs Yew Tree Inn, Mrs EA Thorpe, walsallbagsdvp@gmail.com

March 26

(O) Yellow Labrador Club The Grange Hall, Mrs S Wiles, sussiewiles@yahoo.co.uk

March 28-30

(O/WT) Yorkshire Working Trials Society West Bretton Village Hall, Mrs S Rose, sallyrose@msn.com

March 29

(CH) Border Terrier Club H & H Exhibition Hall, Mrs K Wilkinson, otterkin@aol.com

(CH) Chinese Crested Dog Club Bingley Hall, Stafford County Showground Ltd, Stafford, Miss L Biss, ankorsch@aol.com

(CH) Irish Setter Breeders Club The Kennel Club Building, Mrs P Lucas, jlfurby@aol.com

(CH) Italian Spinone Club Of Great Britain The Kennel Club Building, Miss L Mayne, linda.mayne@outlook.com

(CH) King Charles Spaniel Club Staffordshire County Showground, Mrs ML Constable, m.constable@live.co.uk

(CH) Schnauzer Club Of Great Britain Sky Sports Connexion, Ryton On Dunsmore, Coventry, Mrs EE Kelly, scgb@live.co.uk

(CH) South Wales & Monmouthshire Cocker Spaniel Club Forest Oak Farm, Mr I Hillier, ian_hillier@ayrin.co.uk

(CH) United Kingdom Toydog Society Staffordshire County Showground, Mr TD Mather, uktoydog@btinternet.com

(CH) West Pennine Pug Dog Club Staffordshire County Showground, Mrs L Mallinson, lucy.c.hill@sky.com

(CH/AG) Wyre (Lancs) Agility Club Myerscough College, Bilsborrow, Preston, Lancs, Miss R Bailey, rachaelbailey1981@gmail.com

(O) Basset Fauve De Bretagne Club Tomlinsons Canine Centre, Ratby Road, Markfield, LE67 9RJ, Mr BR Jones, joperry4@hotmail.com

(O) Boston Terrier Club Hawkstone Park Hotel, Ms J Glynn, bostonterrierclubsecretary@yahoo.com

(O) British Bolognese Club Staffordshire County Showground, Miss A Summers, adelesummers1@gmail.com

(O) Coton De Tulear Club of the United Kingdom Staffordshire County Showground, Mr C Hanson-New, secretary@cdtclubuk.org

(O) English Toy Terrier (Black & Tan) Club Staffordshire County Showground, Mrs L Dixon, secretary@english-toy-terrier-club.com

(O) Griffon Bruxellois Breeders Association Staffordshire County Showground, Miss Spittle, juliagbba@icloud.com

(O) Irish Setter Breeders Club The Kennel Club Building, Mrs P Lucas, jlfurby@aol.com

(O) Italian Spinone Club Of Great Britain Kennel Club Building at Stoneleigh Park, Miss L Mayne, linda.mayne@outlook.com

(O) Japanese Chin Club Staffordshire County Showground, Mrs L Flynn, thejapanesechinclubuk@gmail.com

(O) Midland Counties Norfolk Terrier Association Shenstone Village Hall Barnes Road Shenstone, Mrs R Gee, ruth.gee@hotmail.co.uk

(O) Notts & Derby District Staffordshire Bull Terrier Club Shirland village hall, shirland, derbyshire, Ms HE Reaney, rolenskasbt@gmail.com

(O) South Of England Airedale Terrier Club Fairlands Community Centre, Mrs AW Haly, bobbyhaly@yahoo.co.uk

(O) Southern Bichon Frise Breeders Association Staffordshire County Showground, Mr D Parkinson, dezzerer18@yahoo.co.uk

(O/AG) Dog Sports Derby Dog Sports Derby, Miss L Chudleigh, laura.chudleigh1@gmail.com

(O/AG) Glen Craig Canine Training Mossvale Equestrian Centre, Mr M McCartney

(O/AG) Kelluki Agility Merrist Wood College, Miss S Hatcher, sjhatcher62@hotmail.com

(O/AG) Kingdom Of Fife Agility Club Scottish National Equestrian Centre, Oatridge, West Lothian, Ms CS Hair, caroline@carolinehair.com

(O/AG) Ogilvie Dogs Ogilvie Dogs, Miss S Pratley

(O/AG) South Devon Agility & Dog Training Club The Grange Equestrian Centre, Miss Mead, lzmurrell@yahoo.co.uk

(O/AG) The Dog Training Barn Banbury Dog Barn, Mrs S Stephens

(O/OB) Newton Heath Dog Training Club Newton Heath Dog Training Club, Wickentree Lane, Mrs Buffey, cherylbuffey@icloud.com

March 29-30

(CH) Scottish Breeds Canine Club Lanark Agricultural Centre, Lanark, Mr TH Johnston, tomstjohn17@yahoo.com

March 30

(CH) Boston Terrier Club Hawkstone Park Hotel, Ms J Glynn, bostonterrierclubsecretary@yahoo.com

(CH) Cairn Terrier Club Lawrie & Symington, Mrs J Percy, cairntcsecretary@gmail.com

(CH) Hungarian Wirehaired Vizsla Club of Great Britain Tomlinsons Boarding Kennels, Mrs M Munday, maxinemunday@btinternet.com

(CH) North West Golden Retriever Club Organsdale Farm, Mrs PM Blackburn, pat@nwfencingco.com

(CH) Pomeranian Club Weston Hall Hotel, Weston Road, Bulkington, Nr Coventry, Mrs JA Pike, thepomeranianclub@hotmail.co.uk

(CH) Welsh Springer Spaniel Club Of South Wales Forest Oak Farm, Mrs S Evans, Welshspringercsw@gmail.com

(CH) Wirehaired Dachshund Club Sports Connexion, Mrs C Davies, romanchiwires@aol.com

(CH/AG) Wyre (Lancs) Agility Club Myerscough College, Bilsborrow, Preston, Lancs, Miss R Bailey, rachaelbailey1981@gmail.com

(O) Australian Shepherd Club Of The United Kingdom Edingale Village Hall, Mrs J Turnbull, jean.jenkova@live.co.uk

(O) Birmingham & District Fox Terrier Club Bulkington Working Mens Club, Mrs LPJ England, leengland24@yahoo.com

(O) Blackpool & Fylde Toy Dog Society Lightning Club, Mr C Fahey, bftoydog@gmail.com

(O) Boston Terrier Club Hawkstone Park Hotel, Ms J Glynn, bostonterrierclubsecretary@yahoo.com

(O) German Spitz Club of Great Britain Sports Connexion, Miss A Drechsler, ann_drechsler@btinternet.com

(O) Miniature Bull Terrier Club Kegworth Village Hall, Nottingham Road, Kegworth, Derbyshire, Mrs W Whittaker, Wengor@ntlworld.com

(O) North West Golden Retriever Club Organsdale Farm, Mrs PM Blackburn, pat@nwfencingco.com

(O) Northern Basenji Society Rixton Community Hall, Mr Casentieri, swanwrite@yahoo.co.uk

(O) Schipperke Club Nether Whitacre Village Hall, Coleshill, Warwicks, Mrs MK Reed-Peck, byquy@tiscali.co.uk

(O) South Of England Gundog Club Lockmeadow Market, Maidstone, Kent, Ms Daniela Pinto Tranquada, armeiro@ntlworld.com

(O) Tibetan Terrier Association Kennel Club Building at Stoneleigh Park, Mr P Thirlwell, myrleatts@btinternet.com

(O) Welsh Springer Spaniel Club Of South Wales Forest Oak farm, Purlieu, Mrs DK Roberts, Welshspringercsw@gmail.com

(O/AG) Do Believe Dog Training World Horse Welfare (Penny Farm), Mrs RJ Radbourne

(O/AG) Dog Sports Derby Dog Sports Derby, Miss L Chudleigh, laura.chudleigh1@gmail.com

(O/AG) Kelluki Agility Merrist Wood College, Miss S Hatcher, sjhatcher62@hotmail.com

(O/AG) Kingdom Of Fife Agility Club Scottish National Equestrian Centre, Oatridge, West Lothian, Ms CS Hair, caroline@carolinehair.com

(O/AG) The Dog Training Barn Banbury Dog Training Barn, Mrs S Stephens

Events

(PO) Gundog Club Of North Wales Ruthin Livestock Market Parc, Mr R Perkins, roger_p@hotmail.co.uk

APRIL

April 2

(O) Windsor Gundog Society Kempton Park Racecourse, Sunbury-on-Thames, Mrs J King, lynthwaitelabs@hotmail.com

April 3

(O/AG) Phase Purple Agility Training Oak Tree Animal Charity, Mrs F Nemeth, phasepurple@outlook.com

April 5

(CH) Chesapeake Bay Retriever Club Kennel Club Building at Stoneleigh Park, Mrs MA Barker, chesepichessies@gmail.com

(CH) Chihuahua Club Of Scotland Lawrie & Symington, Mr B Joiner, ben@dacatelo.com

(CH) Cocker Spaniel Club of Central England Perdisswell Leisure Centre, Worcester, Mrs TA Sherlock, cscentralengland@gmail.com

(CH) Glen of Imaal Terrier Enthusiasts & Fanciers Club Bingley Hall, Stafford County Showground Ltd, Stafford, Mrs CJ Rogers, jean@e-f-g.co.uk

(CH) Labrador Club Of Scotland Lanark Agricultural Centre, Lanark, Mrs L Park, secretarylcos23@gmail.com

(CH) Mancunian Boxer Club Lightning Club, Mrs S Jump, boxer@quart.u-net.com

(CH) National Terrier Club Staffordshire County Showground, Mr S Plane, stuart.plane12@gmail.com

(CH) North Of England Airedale Terrier Club Staffordshire County Showground, Mrs S Blain, simonacton@msn.com

(CH) Northern Counties Shih Tzu Club Thorpe Willoughby Village Hall, Mr T Crossland, trevorcross25@gmail.com

(CH) Northern Golden Retriever Association Newark & Notts Showground, Winthorpe, Newark, Mr PJ Smithies, ngrashows@gmail.com

(CH) Northern Japanese Chin Club Coronation Hall, Old Station Yard, Milby Boroughbridge, Mrs L Crane, lynn.crane@ntlworld.com

(CH) Northern Newfoundland Club Tomlinson Canine Centre, Upper Grange Farm, Ratby Lane, Markfield, Mr S Hietschold, secretary@northernnewfoundlandclub.org.uk

(CH) Rottweiler Club Moulton College Equestrian Centre, Mrs K Coates, rottclubsec@yahoo.com

(CH) Soft Coated Wheaten Terrier Club Of Great Britain Staffordshire County Showground, Mrs N Bell, secretary@wheaten.org.uk

(CH) Southern Cavalier King Charles Spaniel Club Brunel University Sports Centre, Uxbridge, London, Miss MJD Evans, sockscsec@aol.com

(CH) Tibetan Spaniel Association Sports Connexion, Miss BEM Croucher, bidgetcroucher01@gmail.com

(CH) Welsh Terrier Association Staffordshire County Showground, Mr DL Williams, welshterrierassociation@gmail.com

(CH) Whippet Club Sports Connexion, Mrs ML Anderson, enquiries@thewhippetclub.com

(CH/AG) Wye Valley Dog Training Club Ponderosa Equestrian Centre, Mrs GL Alcorn, terriers@tinyworld.co.uk

(CH/OB) Scottish Kennel Club Strathaven Rugby Club, Mrs G Jones, Gillian@scottishkennelclub.org

(O) Association Of Bloodhound Breeders Bearley Village Hall, Mrs E Watson, scentfynder.bloodhound@gmail.com

(O) Bearded Collie Club Kennel Club Building at Stoneleigh Park, Miss MJ Sale, maureen.sale2@gmail.com

(O) Cesky Terrier Club Bingley Hall, Stafford County Showground Ltd, Stafford, Miss SE Richardson, muckypups_groomers@outlook.com

(O) Chesapeake Bay Retriever Club Kennel Club Building at Stoneleigh Park, Mrs MA Barker, chesepichessies@gmail.com

(O) Dandie Dinmont Terrier Club Staffordshire County Showground, Mrs ML Taylor, mt.ballarat@gmail.com

(O) Deerhound Club Cheltenham Chase Hotel, Miss RV Lucas, packway@hotmail.co.uk

(O) East Midlands Staffordshire Bull Terrier Club Staffordshire County Showground, Mr J Rogers, berrystock@hotmail.com

(O) Manchester Terrier Association Staffordshire County Showground, Ms M Davies, wystry@hotmail.com

(O) Midland Counties Scottish Terrier & West Highland White Terrier Club Bingley Hall, Stafford County Showground Ltd, Stafford, Mrs M Smewin, marionwhwt@blueyonder.co.uk

(O) North Of England Irish Terrier Club Staffordshire County Showground, Mr IA Hardman, ian_hardman39@yahoo.com

(O) Northern Golden Retriever Association Newark & Notts Showground, Winthorpe, Newark, Mr PJ Smithies, ngrashows@gmail.com

(O) Northern Kerry Blue Club Staffordshire County Showground, Miss CA Clarke-O'Neill, lemacdream@btinternet.com

(O) Sealyham Terrier Breeders Association Staffordshire County Showground, Miss L Hampson, lisa.hampson2@ntlworld.com

(O) Sussex Spaniel Association Bagington Village Hall, Mrs L Nesbitt, lesleyanesbitt@gmail.com

(O) Tibetan Spaniel Association Sports Connexion, Miss BEM Croucher, bidgetcroucher01@gmail.com

(O) Welsh Corgi League Old Mill Hall, Grove, Wantage, Mrs M Hoggarth, wclsexec10@aol.com

(O) Yorkshire Afghan Hound Society Grenoside Community Hall, Mrs SM Virgo, sumahari@btinternet.com

(O/AG) Agility Nuts Walesby NG22 9NG, Mr P Sensky, paul@sensky.co.uk

(O/AG) CrookedOak Agility Greenlands Livery Centre, Wreay, Carlisle, Cumbria, Mr S Richardson

(O/AG) Down District Dog Training Club Tullymurray Equestrian Centre, Dr JE Davis, jedavis45@hotmail.com

(O/AG) Newlands Working Dog Society Merrist Wood College, Mrs JM Meekings, judymeekings@yahoo.co.uk

(O/AG) Pawsability World Horse Welfare, Miss S Mosedale, pawsability@outlook.com

(O/OB) Lisburn & District Dog Training Club Lisburn & District DTC Training Field, Miss Mulcahy, daisy.lddtc@outlook.com

(PO) Birtley & District Canine Society Temple Park Leisure Centre, John Reid Rd, South Shields, Mrs M Copeland, birtleycaninesociety@outlook.com

(PO) Plymouth & District Kennel Association The Grange Equestrian Centre, Miss LM Puleston, shanuleas@sky.com

(R) Busy Bee Dog Training Jurby Parish Hall, Mrs DK Martin, debbiekmartin@wimanx.net

April 6

(CH) Birmingham Invicta Pekingese Club Peace Memorial Hall, Miss A Summers, adelesummers1@gmail.com

(CH) Bolton & District German Shepherd Dog Club Little Lever School, Mrs Morrison, boltongsdclub@outlook.com

(CH) Deerhound Club Cheltenham Chase Hotel, Miss RV Lucas, packway@hotmail.co.uk

(CH) English Setter Society Of Wales Flash Leisure Centre, Welshpool, Powys, Mrs K Stephenson, steeplow@btinternet.com

(CH) Flatcoated Retriever Society Kennel Club Building at Stoneleigh Park, Miss L Jones, sharonhenesey@yahoo.co.uk

(CH) Jack Russell Terrier Club Lightning Club, Mrs L Roberts, jackrussellterrierclub@hotmail.com

(CH) North Of England Dalmatian Club Staffordshire County Showground, Mrs P Goodswen, paulagoodswen68@gmail.com

(CH) North West Staffordshire Bull Terrier Club Leigh Sports Village, Ms C Crossman, crossmanclaire@yahoo.com

(CH) Northern Borzoi Association Thompson House Equestrian Centre, Ms Y O'Dell, nbasecretary1975@gmail.com

(CH) Northern Counties Shetland Sheepdog Club Bowburn Community Association, Miss J Clegram, jayne_clegram@hotmail.com

(CH) Norwegian Elkhound Club of Great Britain Corley Village Hall, Coventry, Mrs L Middleton, graythor1@gmail.com

(CH) Poodle Club Of Scotland Carlisle Leisure Centre, Miss FE Swan, poodleclubofscotland@outlook.com

(CH) South Eastern Pyrenean Mountain Dog Club Pamber Heath Memorial Hall, Mr R Waters, rswsquibs@gmail.com

(CH) West Of England Dachshund Association Hutton Moor Leisure Centre, Mrs Cooper, longdogs13@gmail.com

(CH) Yorkshire Golden Retriever Club York Auction Centre, Miss B Baxter, baxter.bermary1@gmail.com

(L) Dovey Valley Canine Society Ciliau Aron Village Hall, Aberagron, Ceredigion, Mr J Bullock, DVCS.secretary@gmail.com

(L) Ryedale Canine Society Ganton Village Hall, Ganton, Nr Scarborough, Mrs C Welch, carhowelcss@aol.com

(O) Belgian Shepherd Dog Association Of Great Britain Naseby Village Hall, Dr MK Pratten, concord@globalnet.co.uk

Events

(O) Birmingham Invicta Pekingese Club
Peace Memorial Hall, Miss A Summers,
adelesummers1@gmail.com

(O) Bouvier Des Flandres Club Of Great Britain
Roade Village Hall & Field, Bailey Brooks Lane,
Roade, NN7 2PT, Miss WM Simmons,
secretary.bdfcofcb@gmail.com

(O) Clumber Spaniel Club North Muskham Village Hall,
Mrs E King, secretary@clumberspanielclub.org.uk

(O) English Setter Society Of Wales Flash Leisure
Centre, Welshpool, Powys, Mrs K Stephenson,
steeplow@btinternet.com

(O) Hungarian Puli Club Of Great Britain Bugbrooke
Sports & Community Centre, Mr A Henshaw-Wood,
hpcofgb@gmail.com

(O) Jack Russell Terrier Club Colton Village Hall,
Mrs L Roberts, jackrussellterrierclub@hotmail.com

(O) Miniature Schnauzer Club Weedon Village Hall,
Mrs A Kidd, miniatureschnauzerclub@gmail.com

(O) North Of England Dalmatian Club Staffordshire
County Showground, Mrs P Goodswen,
paulgoodswen68@gmail.com

(O) Otterhound Club Bagington Village Hall,
Nr Coventry, West Midlands, Mr D Porter,
davidporter@mac.com

(O) Portuguese Water Dog Club Of Great Britain
Nether Whitacre, Village Hall, Mrs C Thompson-
Morgan, cathy@familymorgan.co.uk

(O) Southern Boston Terrier Club Steventon Village
Hall, Steventon, Oxford, Mrs King,
secretary@southernbostonterrierclub.org.uk

(O) Swedish Vallhund Society Tomlinsons Boarding
Kennels, Mrs S Sibley, sharon.sibley@btinternet.com

(O) West Lancs French Bulldog Club Whiston Town
Hall, Miss A Wildman, annwildman10@hotmail.com

(O) West Of England Collie Society East Huntspill
Village Hall, Mrs MR Scamp,
WECSsecretary@outlook.com

(O/AG) Agility Nuts Walesby NG22 9NG,
Mr P Sensky, paul@sensky.co.uk

(O/AG) CrookedOak Agility Greenlands Livery
Centre, Wreay, Carlisle, Cumbria, Mr S Richardson

(O/AG) Down District Dog Training Club Tullymurray
Equestrian Centre, Dr JE Davis,
jedavis45@hotmail.com

(O/AG) Pawsability World Horse Welfare,
Miss S Mosedale, pawsability@outlook.com

**(O/OB) British Association For GSDS - Birmingham
South** The Dell, Mr bratt,
alanandmary@yescomputers.co.uk

(O/OB) German Shepherd Dog Club Of Wales
Monmouthshire Showground, Redbrook Road,
Wyesham, Mrs S Evans, sue.gsdclubwales@sky.com

(O/OB) North East Border Collie Club Hurworth
Community Centre, Hurworth, County Durham,
Mrs J Grant, chrisandjan7@hotmail.com

(PO) Chippenham & District Canine Society West
Wiltshire Equestrian Centre, Holt, Nr Trowbridge,
Mrs CA Meakin, cmeakin30@hotmail.com

(R) Busy Bee Dog Training Jurby Parish Hall,
Mrs DK Martin, debbiekmartin@wimanx.net

(R) Northern Alsatian & All Breeds Training Society
Club Training Ground, Mrs L Gaskell,
lynnegaskell@yahoo.co.uk

(R) West Wales Rally Letterston Memorial Hall,
Mrs M Rayment, mrayment@hotmail.co.uk

April 8

(L) Stocksbridge & District Canine Society
Elsecar Parish Hall, Church Street, Elsecar,
Mrs MA Heathcote, anne.heathcote44@gmail.com

(O/AG) Ogilvie Dogs Ogilvie Dogs, Miss S Pratley

April 11

(O/AG) Edge Agility Shows Lydiard Park, Swindon,
Wilts, Miss Lawson

(O/AG) QSAT Agility Club Thetford Rugby Club,
Mrs M Stone, Qsat2020@gmail.com

April 11-13

(CH/WT) Icen Working Trials Club Brickhouse
Farm, Mrs C Dean, secretary.iceni@gmail.com

(O/WT) Banbury & District Dog Training Society
Rylands Field, Mrs N Crowther,
nicky@downesdesign.co.uk

April 12

(CH) Boston Terrier Club Of Scotland Scottish
Events Campus (SEC), Mr GK Mc Callum,
germccallum@hotmail.com

(CH) Chow Chow Club Of Scotland Scottish Events
Campus (SEC), Mr GK Mc Callum,
Germccallum@hotmail.com

(CH) East Anglia Border Terrier Club
Weston Village Hall, Mr M Hollingsbee,
amanda_sutton@hotmail.co.uk

**(CH) Eastern Counties Cavalier King Charles
Spaniel Society** One Leisure St Ives, Mr K
Arrowsmith, secretary@easterncavalier.co.uk

(CH) Eastern Counties Yorkshire Terrier Club
The Jubilee Centre, Miss ES Weston,
sharon.weston2@btinternet.com

(CH) Finnish Lapphund Club Of Great Britain Kennel
Club Building at Stoneleigh Park, Mrs Woollard,
flcgb.secretary@gmail.com

(CH) Golden Retriever Club Of Scotland Lawrie &
Symington, Mrs C Henry, tom.carol@btinternet.com

(CH) Gordon Setter Association Kennel Club
Building at Stoneleigh Park, Mrs SM Evans,
sue.evans80@ntlworld.com

(CH) Hound Association Of Scotland
Scottish Exhibition Centre, Ms E McKnight,
elizabethmcknight@sky.com

(CH) Irish Setter Club Of Scotland Lawrie
& Symington, Mrs S Sturrock,
sandrasturrock@btinternet.com

(CH) National Airedale Terrier Association
Tomlinsons Boarding Kennels, Mrs J Brown,
julie.nata@outlook.com

(CH) Northern Boxer Club Grenoside Community
Hall, Mrs V Van-Beck,
boxers@newlaihboxers.co.uk

(CH) Norwegian Buhund Club of the UK Bearley
Village Hall, Ms J Shorer-Wheeler,
jenshorer@aol.com

(CH) Norwich Terrier Club Roade Village Hall,
Mrs BA Watkins, beverleywatkinsntc@hotmail.co.uk

**(CH) Pennine & Scottish French Bulldog
Association** Scottish Exhibition Centre,
Mrs J Mavro-Michaelis, jmm10@sky.com

(CH) Scottish Dachshund Club Barony College,
Dumfries, Miss Binks, secretary.sdc@outlook.com

(CH) Scottish Utility Breeds Club Scottish
Exhibition Centre, Mrs Gregory,
secretary.scottishutilitybreeds@gmail.com

(CH) Southern Counties Bearded Collie Club
Testbourne Community School, Miss VN Newton,
nemonevnton@hotmail.com

(CH) Tibetan Spaniel Club Of Scotland Scottish
Exhibition Centre, Mrs Gregory,
tibspanscot@gmail.com

(CH) West Highland White Terrier Club (England)
Ltd Sports Connexion, Mrs F West,
fwest@tomlyndon.co.uk

(CH/AG) Scottish Border Collie Club Oatridge
College (Scottish National Equestrian Centre),
Mrs L Lawrie, lynn.lindilin@blueyonder.co.uk

**(CH/AG) Scunthorpe Obedience & Agility Training
Club** Winterton Agricultural Showground,
Miss JD Smith, zigmund2@tiscali.co.uk

(L) Buxton & District Canine Association
The Scout Association Hall, Mrs A Lombardelli,
ann.lombardelli7375@gmail.com

(O) Cairn Terrier Association Peopleton Village Hall,
Main Road, Peopleton, Mrs LF Hughes,
gyncairn@sky.com

(O) Isle Of Wight Canine Association Ryde Academy,
Mrs JM Andrews, jan.andrews2014@gmail.com

(O) Italian Greyhound Club Yelvertoft Village Hall,
Mrs G Bird, gdbird63@gmail.com

(O) Labrador Retriever Club Of Wales Penyrheol
Community Centre, Mrs M Barker,
secretary@labclubofwales.co.uk

(O) Lowchen (Little Lion Dog) Club Muskham
Rural Community Centre, Mrs M Pascoe,
celebrationspas@btinternet.com

(O) Shetland Sheepdog Club Of North Wales
St Ethelwolds Church Hall, Queensferry,
Mrs LR Sutherland, sLesley140@gmail.com

**(O) South Eastern Counties Bull Terrier
Club** Ramsden Bellhouse Village Hall,
Ramsden Bellhouse, Wickford, Miss FL Mills,
miinrocbullterriers@hotmail.com

(O) South West Utility Club Wellsprings Leisure
Centre, Mrs MJ Quest, chenreziuk@yahoo.co.uk

(O) Southern Bernese Mountain Dog Club South of
England Showground, Ardingley, Mrs PL Goodyear,
goodyear685@btinternet.com

(O/AG) QSAT Agility Club Thetford Rugby Club,
Mrs M Stone, Qsat2020@gmail.com

**(P/HTM) Forest Oak (Gloucestershire) Canine
Society** Forest Oak Farm, Mrs A Smart,
ann.d.smart@hotmail.co.uk

(R) Make A Splash Grange Equestrian Centre,
Mrs DA Colling

April 13

(CH) Cocker Spaniel Club Of Scotland Lanark
Agricultural Centre, Lanark, Miss PJ Halkett,
secretary.scottishcocker@gmail.com

(CH) Griffon Bruxellois Club Drayton Village Hall,
Mr J Swinge, balthazar.pugs@gmail.com

(CH) Hungarian Vizsla Society Kennel Club Building
at Stoneleigh Park, Mrs S Govier,
secretary@vizsla.org.uk

Events

(CH) Manchu Shih Tzu Society Tomlinsons Boarding Kennels, Miss D McIntyre, dmassoc1@aol.com

(CH) Midland Chihuahua Club Alfreton Leisure Centre, Mrs LD Ison, lynpix51@yahoo.co.uk

(CH) Midland Lhasa Apso Association Kennel Club Building at Stoneleigh Park, Mrs M Shand-Clarke, melanieshandclarke.mlaa@gmail.com

(CH) Miniature Poodle Club Weston Village Hall, Mrs Lee-Morris, a-morris14@sky.com

(CH) North Of England Weimaraner Society Newark Showground, Lincoln Road, Newark, Mrs C Rodgers, clairerodgers78@gmail.com

(CH) North Of England Welsh Springer Spaniel Club Thorpe Willoughby Village Hall, Mrs J Jackson, hawkroydws@gmail.com

(CH) Northern Counties Whippet Club Lightning Club, Ms M Lister, mlister6798@gmail.com

(CH) Northern Pomeranian Club Grenoside Community Hall, Mrs DR Smith, Startori@yahoo.com

(CH) Pointer Club Kennel Club Building at Stoneleigh Park, Mr AE Swannell, andyswannell1@gmail.com

(CH) Sealyham Terrier Club King George Memorial Hall, Rangeworthy, BS37 7LS, Mrs V Smith, vitalija.smith@gmail.com

(CH) Sheffield German Shepherd Dog Society Newark Agricultural Showground, Newark, Mrs A Hardy, anmeha@aol.com

(CH) Southern Border Collie Club The Agricultural Hall, Lock Meadow Market, Kent, Mrs KK Angier, angier.bilyara@gmail.com

(CH/AG) Scottish Border Collie Club Scottish National Equestrian Centre, Oatridge, West Lothian, Mrs L Lawrie, lynn.lindilin@blueyonder.co.uk

(O) Australian Terrier Club Of Great Britain Corley Village Hall, Coventry, Mrs R Leeson, ATCGB_Secretary@mail.com

(O) Bichon Frise Club Of Great Britain Mappleborough Green Village Hall, Mrs D Russell, d.russellrusmar@gmail.com

(O) British Chow Chow Club Weedon Bec Village Hall, Mr J Kirby, jameskirby@yahoo.co.uk

(O) Catalan Sheepdog Club of Great Britain Bearley Village Hall, Mrs AM Fieldsend, angie@brandycarr.co.uk

(O) Crystal Palace Canine Association South Of England Show Ground, Mr D Clarke, cpcasec@yahoo.co.uk

(O) East Anglian Collie Association Littleport Leisure Centre, Camel Road, Littleport, Ely, Miss MJ Blake, mirandacorydon@gmail.com

(O) Griffon Bruxellois Club Drayton Village Hall, Lockway, Drayton, Abingdon, OX14 4LQ, Mr J Swinge, balthazar.pugs@gmail.com

(O) Llanelli & District Canine Society United Counties Showground SA33 5DR, Ms HM Cousins, cuz22@live.co.uk

(O) Maltese Club Bagington Village Hall, Nr Coventry, West Midlands, Ms G Oliver, secretary@themalteseclub.co.uk

(O) Manchu Shih Tzu Society Tomlinsons Boarding Kennels, Miss D McIntyre, dmassoc1@aol.com

(O) Midland Lhasa Apso Association Kennel Club Building at Stoneleigh Park, Mrs M Shand-Clarke, melanieshandclarke.mlaa@gmail.com

(O) North Of England Weimaraner Society Newark & Notts Showground, Winthorpe, Newark, Mrs C Rodgers, clairerodgers78@gmail.com

(O) Northern Pomeranian Club Grenoside Community Hall, Mrs DR Smith, Startori@yahoo.com

(O) Northern Provincial Bull Terrier Club Betley Village Hall, Mrs M Scott, doonhamers2000@yahoo.com

(O) Northumberland & Durham Bulldog Club Bowburn Community Association, Mrs D Lowthian, thendbc@sky.com

(O) Parson Russell Terrier Club Peopleton Village Hall, Main Road, Peopleton, Mrs J Newport, team_rocket95@hotmail.com

(O) South East & East Anglian Tibetan Spaniel Society Parkside Hall, Miss HJ Breeze, hiltbreeze.16@gmail.com

(O) Southern Border Collie Club Lock Meadow Market, Mrs KK Angier, angier.bilyara@gmail.com

(O) Southern Dandie Dinmont Terrier Club Chieveley Village Hall, Mrs L Noble, L.M.Noble@btinternet.com

(O) Staffordshire Bull Terrier Club Of South Wales Pencoed Miners Welfare Hall, Miss J Norman, secretary@thesbtcs.wales

(O) United Spaniel Association Sports Connexion, Ms M Sargent, marionsargent.tegwani@gmail.com

(O) Welsh Beagle Club St Arvans Memorial Hall, Chepstow, Mrs V Murphy, welshbeagle@talktalk.net

(O) West Of England Scottish Terrier Club Failand Village Hall, Failand, Mr N Straw, neilstraw26@outlook.com

(O) Wire Fox Terrier Association Claverdon Church Centre, Ms L Ford, wfta.uk@gmail.com

(O/AG) Carn Brea Agility Club Stithians Showground, Stithians, Cornwall, Mrs MA Small, ebbie159@live.co.uk

(O/AG) QSAT Agility Club Thetford Rugby Club, Mrs M Stone, Qsat2020@gmail.com

(O/OB) Sheffield German Shepherd Dog Society Newark & Notts Showground, Winthorpe, Newark, Mrs A Hardy, anmeha@aol.com

(O/OB) Sherborne Vale Dog Training Club Sherborne Football Club, Sherborne, Dorset, Ms J Ward, jlwguildford@yahoo.co.uk

(P/AG) Scunthorpe Obedience & Agility Training Club Winterton Agricultural Showground, Miss JD Smith, zigmund2@tiscali.co.uk

(P/HTM) Forest Oak (Gloucestershire) Canine Society Forest Oak Farm, Mrs A Smart, ann.d.smart@hotmail.co.uk

(PO) Saltburn & District Canine Society Temple Park Leisure Centre, John Reid Rd, South Shields, Mrs A scott, poppy1709@gmail.com

(R) Sheffield German Shepherd Dog Society Newark Agricultural Showground, Newark, Mrs A Hardy, anmeha@aol.com

April 15

(O/AG) Phase Purple Agility Training Oak Tree Animal Charity, Mrs F Nemeth, phasepurple@outlook.com

(PO) Norfolk & Norwich Canine Society Forest Edge Arena, Miss H Styles, hillyb4nn@gmail.com

April 17

(O/AG) Kelluki Agility Ardingly Showground, West Sussex, Miss S Hatcher, sjhatcher62@hotmail.com

April 17-20

(CH/WT) Surrey Dog Training Society Oakwood Hill Village Hall, S Ford, jennifer.staves@gmail.com

April 18

(CH) Irish Wolfhound Club Kennel Club Building at Stoneleigh Park, Mrs D Treadwell, irishwolfhoundclub.secretary@hotmail.com

(CH) Midland Rottweiler Club Kennel Club Building at Stoneleigh Park, Miss K Forster, Megalmar.rotts@gmail.com

(CH/OB) Carmarthen Canine Society Carmarthen Show Ground, Mrs L Dayman, matthewyorath01@hotmail.co.uk

(L) Irish Wolfhound Club Kennel Club Building at Stoneleigh Park, Mrs D Treadwell, irishwolfhoundclub.secretary@hotmail.com

(L/AG) Warrior Agility Bolesworth Castle, Tattenhall, Chester, Miss R Sargent

(O) East Anglian Gundog Society Horse Creek Farm Arena, March, Cambridgeshire, Mr PW Osbourne, paul.osbourne_braego@btinternet.com

(O/AG) Agility Vision Alrewas Showground, Mrs A Bailey, agilityvision.alex@gmail.com

(O/AG) Kelluki Agility Ardingly Showground, West Sussex, Miss S Hatcher, sjhatcher62@hotmail.com

(O/AG) Longfield Agility Newby Hall, Nr Ripon, Mr K Waddell, longfieldagility@gmail.com

(O/AG) Norfolk Dog Training Society The Royal Norfolk Showground, Mrs Carter, norfolkdogtrainingsociety@outlook.com

(O/AG) Pawsome Synergy Willoughby Park, formerly Onley Grounds Equestrian complex, Mrs Gandy (Pawsome)

(O/AG) Phase Purple Agility Training Murray House Livery, Mrs F Nemeth, phasepurple@outlook.com

(O/OB) Diss & Harleston Dog Training Stonham Barns Stonham Aspel, Mrs SJ Walker, norfolktroths@hotmail.com

(P/AG) Kernow Agility Club Royal Cornwall Show Ground, Wadebridge, Mrs F Hildersley, fran.hildersley@btinternet.com

(PO) Edwinstowe & District Canine Society Newark & Notts Showground, Winthorpe, Newark, Mrs E King, euniceking2@talktalk.net

April 19

(CH) Bath & Western Counties Bulldog Club Double Tree by Hilton Swindon, Mrs E Walker, honsecretary.bwcbc@gmail.com

(CH) Flatcoated Retriever Club Of Scotland Lockerbie Ice Rink, Miss J Flynn, lilmizjenni@hotmail.co.uk

(CH) Longhaired Dachshund Club Sports Connexion, Mrs A Latham-Jackson, a.lathamjackson@btinternet.com

(CH) Midland Counties Labrador Retriever Club Newark & Notts Showground, Winthorpe, Newark, Mrs JK Lewis, jlewisuk@aol.com

(CH) Northern Ireland Staffordshire Bull Terrier Club Oakfield Community Centre, Ms J Connery, hollie-92@hotmail.co.uk

(CH) Northern King Charles Spaniel Club Grenoside Community Hall, Mrs M Kendall, nksc.secretary@gmail.com

Events

(CH) Smooth Fox Terrier Association Speedwell Rooms S43 3JL, Mrs LPJ England, leeengland24@yahoo.com

(CH) Smoothhaired Dachshund Club Sports Connexion, Mrs KA Herrington, katherine.herrington@yahoo.co.uk

(CH) Working & Pastoral Breeds Association Of Wales Royal Welsh Showground, Mrs J Rual, jangilcoru@hotmail.com

(L) Leominster Canine Society Pembridge Village Hall, Pembridge, Miss R Pearce, LCSdogshow@gmail.com

(L/AG) Warrior Agility Bolesworth Castle, Tattenhall, Chester, Miss R Sargent

(O) Bernese Mountain Dog Club of Wales Royal Welsh Showground, Mrs Wilson, baribern@aol.com

(O) Great Dane Club Of Wales Royal Welsh Showground, Mrs P Patch, HonSecGDCW@gmail.com

(O) Hitchin & District Canine Society Brook Farm Training Centre, Mr Ray McDonald, hitchin@roanjora.co.uk

(O) Humberside Hound Association Costello Sports Centre, Kingston Upon Hull, Mrs Pearce, clair.pearce@btinternet.com

(O) Hyde & District Canine Association Sutton Leisure Centre, Sutton, Merseyside, Miss L Anderson, secretary.hyde@gmail.com

(O) Longhaired Dachshund Club Sports Connexion, Mrs A Latham-Jackson, a.lathamjackson@btinternet.com

(O) Midland Counties Labrador Retriever Club Newark & Notts Showground, Winthorpe, Newark, Mrs JK Lewis, jlewisuk@aol.com

(O) Norfolk Terrier Club of Great Britain Weedon Bec Village Hall, Miss D Jenkins, kinsridge2@gmail.com

(O) North East Coast Chihuahua Club Coxhoe Village Hall, Mrs JD Parker, parkbow@gmail.com

(O) Skye Terrier Club Thorpe Willoughby Village Hall, Mrs C McLeod, secretary@skyeterrierclub.org.uk

(O) South Western Golden Retriever Club Matford Centre, Miss S Porter, portersusan69@gmail.com

(O/AG) Agility Vision Alrewas Showground, Mrs A Bailey, agilityvision.alex@gmail.com

(O/AG) Kelluki Agility Ardingly Showground, West Sussex, Miss S Hatcher, sjhatcher62@hotmail.com

(O/AG) Longfield Agility Newby Hall, Nr Ripon, Mr K Waddell, longfieldagility@gmail.com

(O/AG) Pawsome Synergy Willoughby Park, formerly Onley Grounds Equestrian complex, Mrs Gandy (Pawsome)

(O/AG) Phase Purple Agility Training Murray House Livery, Mrs F Nemeth, phasepurple@outlook.com

(O/OB) Carmarthen Canine Society Carmarthen Show Ground, Mrs L Dayman, matthewyorath01@hotmail.co.uk

(O/OB) Diss & Harleston Dog Training Stonham Barns Stonham Aspel, Mrs SJ Walker, norfolktroths@hotmail.com

(P/AG) Kernow Agility Club Royal Cornwall Show Ground, Wadebridge, Mrs F Hildersley, fran.hildersley@btinternet.com

(P/AG) Norfolk Dog Training Society The Royal Norfolk Showground, Mrs Carter, norfolkdogtrainingsociety@outlook.com

(PO) South Western Gundog Club Matford Centre, Mrs M Trotter, mary.secswgclub@gmail.com

April 20

(CH) Association of Japanese Shiba Inu Speedwell Rooms S43 3JL, Mrs BJ Goudie, ajsisecretary@gmail.com

(CH) East Anglia Border Terrier Club weston village hall, Ms J Green, amanda_sutton@hotmail.co.uk

(CH) English Setter Association The Kennel Club Building, Mr CG Bird, esa.cransett@gmail.com

(CH) Hadrian Basset Hound Club Bowburn Community Association, Mr T Coddington, liz.cudlip66@btinternet.com

(CH) Merseyside Boxer Club Sutton Leisure Centre, Sutton, Merseyside, Mrs M McArdle, s.mcardle05@gmail.com

(CH) Midlands & Northern Rhodesian Ridgeback Club Oakridge Arena, Collingham, Miss LC Forrester, secretary@ridgebacks.org.uk

(CH) Northern Saluki Club Alfreton Leisure Centre, Mr J Owen, northernsalukiclub@gmail.com

(CH) Siberian Husky Club Of Great Britain Kennel Club Building at Stoneleigh Park, Mr KF Greenland, kry.s.greenland@talktalk.net

(CH/OB) Carmarthen Canine Society Carmarthen Show Ground, Mrs L Dayman, matthewyorath01@hotmail.co.uk

(L) Bridlington & District Canine Society Kilham Village Hall, Mrs S Gibson, Sylvviagibson33@hotmail.com

(L/AG) Warrior Agility Bolesworth Castle, Tattenhall, Chester, Miss R Sargent

(O) Carmarthen Canine Society Carmarthen Show Ground, Mrs L Dayman, matthewyorath01@hotmail.co.uk

(O) East Midland Bulldog Club Kegworth Village Hall, Nottingham Road, Kegworth, Derbyshire, Mrs V Eaton, vickyeaton@yahoo.co.uk

(O) Manchester & District Sporting Terrier Club Swinton Masonic Hall, Hospital Rd, Swinton, Miss CA Clarke-O'Neill, lemracdream@btinternet.com

(O) Midlands & Northern Rhodesian Ridgeback Club Oakridge Arena, Miss LC Forrester, secretary@ridgebacks.org.uk

(O) Old English Mastiff Club Bearley Village Hall, Mrs DE Harding, tysonkobe@aol.com

(O) Penrith & District Canine Society Greenlands Equestrian Centre, Mrs J Power, powerjane20@gmail.com

(O) Plymouth & District Canine Society The Grange Equestrian Centre, Mrs DR Stansbury, woodbriardobes@outlook.com

(O) Pontypool & District Canine Society Pontypool Active Living Centre, Mrs DK Roberts, deb7roberts@googlemail.com

(O) Smooth Collie Club Of Great Britain Bagington Village Hall, Nr Coventry, West Midlands, Miss S Flower, scgcbsec@gmail.com

(O) Smooth Collie Club Of Great Britain Bagington Village Hall, Nr Coventry, West Midlands, Miss S Flower, scgcbsec@gmail.com

(O) South Eastern Counties Toy Dog Society The Agricultural Hall, Mr SR Goodwin, vivalanola@btinternet.com

(O/AG) Agility Vision Alrewas Showground, Mrs A Bailey, agilityvision.alex@gmail.com

(O/AG) Kelluki Agility Ardingly Showground, West Sussex, Miss S Hatcher, sjhatcher62@hotmail.com

(O/AG) Longfield Agility Newby Hall, Nr Ripon, Mr K Waddell, longfieldagility@gmail.com

(O/AG) Norfolk Dog Training Society The Royal Norfolk Showground, Mrs Carter, norfolkdogtrainingsociety@outlook.com

(O/AG) Pawsome Synergy Willoughby Park, formerly Onley Grounds Equestrian complex, Mrs Gandy (Pawsome)

(O/AG) Phase Purple Agility Training Murray House Livery, Mrs F Nemeth, phasepurple@outlook.com

(O/OB) Diss & Harleston Dog Training Stonham Barns Stonham Aspel, Mrs SJ Walker, norfolktroths@hotmail.com

(P/AG) Kernow Agility Club Royal Cornwall Show Ground, Wadebridge, Mrs F Hildersley, fran.hildersley@btinternet.com

(PO) Sunderland & District Canine Society Temple Park Leisure Centre, John Reid Rd, South Shields, Mrs M Morrison, mariemorrison53@hotmail.com

April 21

(CH) East Anglian Cocker Spaniel Society Sky Sports Connexion, Ryton On Dunsmore, Coventry, Mr J Hutton-Baber, falklad@gmail.com

(CH) Eastern Bearded Collie Association Newark & Notts Showground, Winthorpe, Newark, Mr B Canty, easternbeardies@hotmail.co.uk

(CH) German Shorthaired Pointer Association Kennel Club Building at Stoneleigh Park, Mrs L Taylor, 1gspasec@gmail.com

(L/AG) Warrior Agility Bolesworth Castle, Tattenhall, Chester, Miss R Sargent

(O) Dogs of Tibet Society UK Kennel Club Building at Stoneleigh Park, Mr A Moran, sec.dotsuk@yahoo.com

(O) Eastern Bearded Collie Association Newark & Notts Showground, Winthorpe, Newark, Mr B Canty, easternbeardies@hotmail.co.uk

(O) German Shorthaired Pointer Association The Kennel Club Building, Mrs L Taylor, 1gspasec@gmail.com

(O) North Of England Pyrenean Mountain Dog Club Shenstone Village Hall, Ms M Sargent, tegwani@aol.co.uk

(O) South West Hound Club Thornbury Leisure Centre, Thornbury, Gloucestershire, Mrs GH Adams, glendavid.adams@btinternet.com

(O) Southampton & District Canine Association Embley School, Mrs AJ Betts, amandabetts@btconnect.com

(O/AG) Agility Vision Alrewas Showground, Mrs A Bailey, agilityvision.alex@gmail.com

(O/AG) Longfield Agility Newby Hall, Nr Ripon, Mr K Waddell, longfieldagility@gmail.com

(O/AG) Pawsome Synergy Willoughby Park, formerly Onley Grounds Equestrian complex, Mrs Gandy (Pawsome)

(O/AG) Phase Purple Agility Training Murray House Livery, Mrs F Nemeth, phasepurple@outlook.com

(O/OB) Diss & Harleston Dog Training Stonham Barns Stonham Aspel, Mrs SJ Walker, norfolktroths@hotmail.com

Events

(H/OB) St Marys Dog Training Society Holmside Hall Equestrian Centre, Burnhope, Mrs Sanderson, anne@kenyantravel.co.uk

(PO) Cornwall Gundog Club Duchy College Equestrian Centre, Stoke Climsland, Callington, Miss J Baguley, joy.baguley@btinternet.com

April 22

(O/AG) Agility Vision Alrewas Showground, Mrs A Bailey, agilityvision.alex@gmail.com

(O/AG) Longfield Agility Newby Hall, Nr Ripon, Mr K Waddell, longfieldagility@gmail.com

April 23

(O/AG) Dog Sports Derby Dog Sports Derby, Miss L Chudleigh, laura.chudleigh1@gmail.com

April 24

(O/AG) Dog Sports Derby Dog Sports Derby, Miss L Chudleigh, laura.chudleigh1@gmail.com

(O/AG) JDA Dog Training Club Ashfields Carriage & Polo Club, Mr J Greenhow, jimgreenhow@hotmail.com

April 25

(O) Chow Chow Club Of Wales Three Counties Show Ground Malvern worcs, Mrs M Coleman, Benmellc@hotmail.com

(O) Shih Tzu Club Of South Wales & Western Counties Three Counties Show Ground Malvern worcs, Mrs TA Hitt, tracey.hitt@btinternet.com

(O/AG) JDA Dog Training Club Ashfields Carriage & Polo Club, Mr J Greenhow, jimgreenhow@hotmail.com

(O/AG) Lincoln Agility Enthusiasts Winterton Agricultural Showground, Mrs C Osborne, agilitybuds@ntlworld.com

April 25-27

(O/WT) Midland Counties German Shepherd Dog Association Perlethorpe Village Hall, Mrs P Travers, pauline_marie_travers@hotmail.com

April 25-28

(CH) West Of England Ladies Kennel Society Three Counties Showground, Malvern, Mrs C Friend-Rees, secretary@welks.org.uk

April 26

(CH/OB) British Association For GSDS - Oxhey King George The Fifth Playing Fields, Watford, Mrs W Birch, wendyanddella@gmail.com

(O) English Shetland Sheepdog Club Bagington Village Hall, Mrs Pritchard, secretary@essc.org.uk

(O) Scottish Terrier Club (England) Normanton on Soar Jubilee Village Hall, Mrs Dixon, scottishterriereng@gmail.com

(O) Western Afghan Hound Club Three Counties Show Ground Malvern worcs, Mrs J Cross, jill@gilariafghans.com

(O/AG) JDA Dog Training Club Ashfields Carriage & Polo Club, Mr J Greenhow, jimgreenhow@hotmail.com

(O/AG) Lincoln Agility Enthusiasts Winterton Agricultural Showground, Mrs C Osborne, agilitybuds@ntlworld.com

(O/OB) Down District Dog Training Club DDDTC Training Field, Dr JE Davis, jedavis45@hotmail.com

(P/AG) Ribble Dog Agility Training Club Myerscough College, Bilsborrow, Preston, Lancs, Mrs S Dickinson, pabqinn@gmail.com

(P/AG) Wallingford Dog Training Club Newbury Showground, Chieveley, Newbury, Mrs G Rhodes, secretary@wdtc.org.uk

(R) Best Paw Forward Rally Obedience Club Mrs SR Kanzaria, bestpaw@hotmail.co.uk

(R) Ilminster Lions Club Seavington Millenium Hall, Ms L Poole, lindsey.poole@btinternet.com

April 27

(CH) Samoyed Association Three Counties Showground, Malvern, Mr C Brookes, chris.brookes@appassionata.co.uk

(CH/OB) Lanarkshire Canine Training Association Brancumhall Playing Fields, Mrs E Murphy, eileen877@btinternet.com

(L) Bridlington & District Canine Society Kilham Village Hall, Mrs S Gibson, Sylviagibson33@hotmail.com

(L) Notts & Derby District Bull Terrier Club Post Mill Centre, Mrs K Bradley, kerrilbradley@hotmail.com

(O) East Anglian Staffordshire Bull Terrier Club The Elizabethan Centre, Mrs LL McFadyen, easbtclub@gmail.com

(O) German Pinscher Club Three Counties Showground, Malvern, Mrs K Wakefield, ke.wakefield@btinternet.com

(O) Sheringham & District Kennel Association Queen Elizabeth Hall, Worsted, Miss K Partner, kpartner@hotmail.co.uk

(O) Welsh Dobermann Club Three Counties Showground, Malvern, Mrs JE Piper, junewelshdobie@gmail.com

(O/AG) JDA Dog Training Club Ashfields Carriage & Polo Club, Mr J Greenhow, jimgreenhow@hotmail.com

(O/AG) Lincoln Agility Enthusiasts Winterton Agricultural Showground, Mrs C Osborne, agilitybuds@ntlworld.com

(O/AG) Wilton Agility Club Wilton Agility Club, Redcar, Cleveland, Mr Bull, wiltondogclub@hotmail.com

(O/OB) Phoenix Obedience Dog Club Shelley Community Football Club, Mrs J Woodhead, phoenixodc@gmail.com

(P/AG) Wallingford Dog Training Club Newbury Showground, Chieveley, Newbury, Mrs G Rhodes, secretary@wdtc.org.uk

(R) Best Paw Forward Rally Obedience Club Mrs SR Kanzaria, bestpaw@hotmail.co.uk

(R) Ilminster Lions Club Seavington Millenium Hall, Ms L Poole, lindsey.poole@btinternet.com

April 28

(O) Borzoi Club Three Counties Showground, Malvern, Miss P Harris, theborzoiclub@ymail.com

(O) Pug Dog Club Three Counties Showground, Malvern, Mr NR Marsh, Heketara23@gmail.com

April 28-May 4

(CH/WT) Scottish Working Trials Society Blainslie Village Hall, Mrs J Watson, joyce@onestopos.co.uk

MAY

May 2

(O/AG) Agility Vision Alrewas Showground, Mrs A Bailey, agilityvision.alex@gmail.com

May 3

(CH) Keeshond Club The Windmill Village Hotel, Miss GM Clark, joanamiles17@gmail.com

(CH) Miniature Pinscher Club Whitley Village Hall, Mrs K French, miniaturepinscherclub@gmail.com

(CH) Morecambe Bay & Cumbria Staffordshire Bull Terrier Club Fleetwood Marine Hall, Mr G Nicholson, mbcstcsec@gmail.com

(CH) Plymouth, Devon & Cornwall Bulldog Club Grange Leisure Centre, Mrs SF McGinn, lymelights@btinternet.com

(CH) Southern Golden Retriever Society The Dobermann Club, Mrs JE Wilton, asteph33@aol.com

(CH) Tibetan Terrier Breeders & Owners Club Kennel Club Building at Stoneleigh Park, Mr NS Smith, thingsbling@aol.com

(CH) Tyne Wear & Tees Boxer Club Meadowfield Leisure Centre, Mrs P Lowery, pj55.lowery76@yahoo.com

(CH) Weimaraner Association Oakridge Arena, Miss J George-Ainscough, achouffegundogs@btinternet.com

(CH) Welsh Springer Spaniel Club Sports Connexion, Mr P Barnaby, secretary@wssc.org.uk

(CH/AG) Woodside Dog Agility Club Biggar Farmers Club Show Ground, Ms J Hart, woodsidedac@gmail.com

(L) French Bulldog Club Of England Chieveley Village Hall & Recreation Centre, Mrs B Hucker, fbce.secretary@outlook.com

(L) Midland Cavalier King Charles Spaniel Club Baginton Village Hall, Baginton, Nr Coventry, Ms RA Surman, mckcs.secretary@gmail.com

(O) British Dalmatian Club Forest Oak Farm, Mrs J Hopkin, thornersas@aol.com

(O) Cardigan Welsh Corgi Association Mappleborough Green Village Hall, Miss Taylor, brookejennifertaylor@gmail.com

(O) East Anglian Whippet Club Mrs A Morland, gunhounddog@aol.com

(O) Eastern Saint Bernard Club Sea Scout's Building, Mrs T Booth, tanyajanebooth@gmail.com

(O) Miniature Pinscher Club Whitley Village Hall, Mrs K French, miniaturepinscherclub@gmail.com

(O) Okehampton & District Canine Society The Grange Equestrian Centre, Mrs CJ Turner, devonhound@googlemail.com

(O) Rotherham & District Cocker Spaniel Club Grenoside Community Hall, Miss D Young, rotherhamcockers@yahoo.com

(O) Southern Cairn Terrier Club Jubilee Hall, Mrs SSA Kinton, skinton@btinternet.com

(O) United St Bernard Club Sea Scout's Building, Miss S Drewe, usbc@talktalk.net

(O) Welsh Springer Spaniel Club Sports Connexion, Mr P Barnaby, secretary@wssc.org.uk

(O) Yorkshire, Lancashire & Cheshire Border Terrier Club Thorpe Willoughby Village Hall, Mrs T Green, yorkslancs@outlook.com

(O/AG) Agility Vision Alrewas Showground, Mrs A Bailey, agilityvision.alex@gmail.com

(O/AG) Barnstaple & District Dog Agility Society Bales Ash Campsite, Mrs Prowse, barnstapledogagility@gmail.com

(O/AG) Dog Sports Derby Dog Sports Derby, Miss L Chudleigh, laura.chudleigh1@gmail.com

Events

(O/AG) TNG Agility White Owl Farm, Miss Durrant, anne.murray27@icloud.com

(PO) Chesterfield Canine Society Hillstown Village Hall, Mrs D Mottram, mybeards.pon@btinternet.com

(PO) Hampshire Gundog Society Taro Leisure Centre, Penns Place, Petersfield, Mrs P Byrne, pam.siochanna@gmail.com

(PO) Hound Club Of East Anglia Littleport Leisure Centre, Camel Road, Littleport, Ely, Miss M Hills, maria_hills1@btinternet.com

May 4

(CH) British Dalmatian Club Forest Oak Farm, Mrs J Hopkin, thornersas@aol.com

(CH) Cheshire Cocker Spaniel Club Biddulph Valley Leisure Centre, Mrs Robins, elaine.robins@talk21.com

(CH) Devon, Cornwall & South West Beagle Society Mark Village Hall, Mrs GA Kemp, georgiekemp9@hotmail.co.uk

(CH) Gordon Setter Club Of Scotland Dumyat Centre, Menstrie, Mrs AE Millar, GordonSetterClubofScotland@outlook.com

(CH) Gordon Setter Club Of Scotland Dumyat Centre, Menstrie, Mrs AE Millar, GordonSetterClubofScotland@outlook.com

(CH) Griffon Bruxellois Breeders Association Bearley Village Hall, Miss Spittle, juliagbba@icloud.com

(CH) Lancashire & Cheshire Collie Club Thompson House Equestrian Centre, Mr RG Wilkinson, rgwilkinson65@gmail.com

(CH) London & South East Rottweiler Club Dobermann Club Showground, Hertford Road, Digsweil, Mrs W Kichenside, lasersecretary@gmail.com

(CH) Merseyside Staffordshire Bull Terrier Club Fleetwood Marine Hall, Mrs ML Riley, michaelajackson1993@hotmail.co.uk

(CH) Midland & Eastern Counties Welsh Corgi Club Whitwick and Coalville Leisure Centre, Mrs JE Whitehead, joycwhi@aol.com

(CH) North Eastern Chow Chow Club Barley Mow Village Hall, Mrs V Ellis, vickie.ellis@me.com

(CH) Northern England Flatcoated Retriever Association The Exhibition Hall, York Auction Centre, Mrs P Goulette, lizzlog@hotmail.com

(CH) Northern Parson Russell Terrier Club Low Hesket Village Hall, Low Hesket, Carlisle, Mrs L Roberts, jackrussellterrierclub@hotmail.com

(CH) South Western English Springer Spaniel Club Pucklechurch Sports Pavilion, Pucklechurch, Avon, Mrs D Murdoch, criskaf@mail.com

(CH) Southern Dachshund Association Bracknell Sports and Leisure Centre, Bracknell, Berkshire, Mrs W Starkey, wendygms@yahoo.co.uk

(CH) Southern Newfoundland Club Sports Connexion, Doctor G Giambona, jegailit@yahoo.co.uk

(CH) Southern Rhodesian Ridgeback Association Kennel Club Building at Stoneleigh Park, Mr MJ House, mikehouse@hotmail.co.uk

(CH) Yorkshire Shetland Sheepdog Club Clifton Community School (Cranworth Site), Mrs HM Bendelow, ysschonsec@gmail.com

(CH/AG) Vyne Agility Club Newbury Showground, Chieveley, Newbury, Mrs L Slade, jen.slade@hotmail.co.uk

(CH/AG) Woodside Dog Agility Club Biggar Farmers Club Show Ground, Ms J Hart, woodsidedac@gmail.com

(CH/OB) Rugby Dog Training Club Ashlawn Recreation Ground, Ashlawn Road, Rugby, Mr REJ Lewis, maggielewis76@gmail.com

(L) Congleton Canine Society Chelford Village Hall, Knutford Rd, Mrs A Lombardelli, ann.lombardelli7375@gmail.com

(L) East Of England Great Dane Club Manor Farm Community Centre, Eye, Nr Peterborough, Mrs J King, eppwooddanes@gmail.com

(O) British Chihuahua Club Brackley Leisure Centre, Mrs P Lodwick, secretary@britishchihuahua.club

(O) Bullmastiff Association Bromsberrow Village Hall, Mr R Aston, eternalpride@hotmail.co.uk

(O) Gravesend & Medway Towns Canine Society Lockmeadow Market, Mr A Broadbridge, gmtdcs@outlook.com

(O) Havanese Club Of Great Britain Nether Whitacre Village Hall, Coleshill, Warwick, Mrs G Morris, gaynormorris260@gmail.com

(O) Isle Of Man Canine Society Jurby Parish Hall, Mrs BS Waggett, b.waggett@manx.net

(O) Lancashire Heeler Club Middlewich Civic Hall, Mrs EA Thwaite, thelancashireheelerclub@gmail.com

(O) Lincoln & Humberside Yorkshire Terrier Club Sunshine Hall, Ashby High Street, Scunthorpe, Mrs J Hutchinson, lottiesbonnet@aol.com

(O) Midland Basset Hound Club Tomlinsons Boarding Kennels, Mrs Whitehead, midlandbassethc@gmail.com

(O) Northern England Flatcoated Retriever Association The Exhibition Hall, York Auction Centre, Mrs P Goulette, lizzlog@hotmail.com

(O) Northern English Setter Society Eggborough & Whitley Village Hall, Miss DE Loynd, secretaryness@outlook.com

(O) Northern Parson Russell Terrier Club Low Hesket Village Hall, Low Hesket, Carlisle, Mrs L Roberts, jackrussellterrierclub@hotmail.com

(O) Pontypridd & District Canine Society Merthyr Tydfil Leisure Village, Mr MW Sanders, martin.dog@hotmail.co.uk

(O) Southern Newfoundland Club Sports Connexion, Doctor G Giambona, jegailit@yahoo.co.uk

(O) Welsh And West Of England Bullmastiff Society Bromsberrow Village Hall, Mrs A Warren, allwatcha@btinternet.com

(O) Yeovil & District Canine Society Turnpike Showground, Motcombe, Dorset, Miss E Jackson, yeovildcs@outlook.com

(O/AG) Agility Vision Alrewas Showground, Mrs A Bailey, agilityvision.alex@gmail.com

(O/AG) Barnstaple & District Dog Agility Society Bales Ash Campsite, Mrs Prowse, barnstapledogagility@gmail.com

(O/AG) Dog Sports Derby Dog Sports Derby, Miss L Chudleigh, laura.chudleigh1@gmail.com

(O/AG) TNG Agility White Owl Farm, Miss Durrant, anne.murray27@icloud.com

(O/OB) Chesvale Dog Training Club St Leonards Parish Hall & Playing Fields, Chesham, Mrs P Finn, clare@puddscross.com

(PO) Border Counties Gundog Club H & H Exhibition Hall, Mrs DK Douglas, jane.e.maclachlan@sky.com

May 5

(CH) Afghan Hound Association Kennel Club Building at Stoneleigh Park, Miss CM Parker, secretary@ahaonline.co.uk

(CH) East Anglian Border Collie Club Dobermann Club Training Ground, Mrs C Dalby, secretary.eabcc@gmail.com

(CH) National Whippet Association Kennel Club Building at Stoneleigh Park, Mrs K McDonald, nationalwhippet@gmail.com

(CH/AG) Vyne Agility Club Newbury Showground, Chieveley, Newbury, Mrs L Slade, jen.slade@hotmail.co.uk

(CH/OB) Leicestershire German Shepherd Dog Club Coalville Rugby Football Club Memorial Ground, Mrs J Snook, dianewalgate@hotmail.co.uk

(O) Banbury & District Canine Association Sports Connexion, Mrs Bennett, chrisraik@aol.com

(O) Chelmsford & District Canine Society Brook Farm Training Centre, Stapleford Road, Stapleford Abbots, RM4 1EJ, Miss J Parsons, jifurby@aol.com

(O/AG) Agility Vision Alrewas Showground, Mrs A Bailey, agilityvision.alex@gmail.com

(O/AG) Severnside (Bristol) Dog Agility Club Bathing Pond Fields, Bristol, Mrs CM Godfrey, debbie@fourpawstc.co.uk

(PO) Aberystwyth & District Canine Society United Counties Showground SA33 5DR, Mrs S Banks, suebanksaddc@gmail.com

(PO) Marlborough & District Canine Society West Wiltshire Equestrian Centre, Holt, Nr Trowbridge, Mrs L Long, arroline@outlook.com

May 8

(CH) Borzoi Club Staffordshire County Showground, Miss P Harris, theborzoiclub@ymail.com

(CH) Cesky Terrier Club Bingley Hall, Stafford County Showground Ltd, Stafford, Miss SE Richardson, muckypups_groomers@outlook.com

(CH) Dandie Dinmont Terrier Club Staffordshire County Showground, Mrs ML Taylor, mt.ballarat@gmail.com

(CH) Kerry Blue Terrier Association Staffordshire County Showground, Mrs Phillips, brandynkerries@sky.com

(CH) Midland Border Terrier Club Staffordshire County Showground, Mr B Wright, totherend@outlook.com

(O) Bedlington Terrier Association Staffordshire County Showground, Ms LJ Williams, ystwythbay@gmail.com

(O/AG) PointZero Fairford Football Club, Cinder Lane GL7 4AX, Mr A Clarke

May 8-11

(CH) Birmingham Dog Show Society Ltd Staffordshire County Showground, Mrs JA Griffiths, secretary@thenationaldogshow.org.uk

May 9

(CH) Bracco Italiano Society Staffordshire County Showground, Mrs KC Newman-Jones, Megan.gsp.hayes@gmail.com

(CH) English Springer Spaniel Club Staffordshire County Showground, Ms KL Holt, holtkath@gmail.com

Events

(O) Irish Water Spaniel Association Staffordshire County Showground, Mrs AL Biggs, iwsa.secretary@gmail.com

(O/AG) Agility Vision Alrewas Showground, Mrs A Bailey, agilityvision.alex@gmail.com

(O/AG) Barrow-in-Furness Dog Agility Club Duddon Sports & Social Club, Mrs Hill, cerysjones1@gmail.com

(O/AG) P3 Training Academy Bury Farm Equestrian, Miss K Parker

(O/AG) Phase Purple Agility Training Oak Tree Animal Charity, Mrs F Nemeth, hasepurple@outlook.com

(O/AG) PointZero Fairford Football Club, Cinder Lane GL7 4AX, Mr A Clarke

May 10

(CH) Midlands Border Collie Club Staffordshire County Showground, Mrs H Kerr, laura_wiltshire@sky.com

(O) Alaskan Malamute Club of the United Kingdom Staffordshire County Showground, Mrs J Sheehan, secretary@alasknmalamute.org.uk

(O) British Bullmastiff League Staffordshire County Showground, Miss C Thomas, carolyne.thomas@yahoo.co.uk

(O) British Samoyed Club Staffordshire County Showground, Mrs TT Lloyd, arianrhod_9@btinternet.com

(O) Coloured Bull Terrier Club Pilsley Village Hall, Miss FL Mills, miinrocbullterriers@hotmail.com

(O) Midland Rottweiler Club Staffordshire County Showground, Miss K Forster, Megalmar.rots@gmail.com

(O) West Of England Labrador Retriever Club Woolavington Village Hall, Mrs L Kent, lucy_kent_0209@hotmail.com

(O/AG) Agility Vision Alrewas Showground, Mrs A Bailey, agilityvision.alex@gmail.com

(O/AG) Barrow-in-Furness Dog Agility Club Duddon Sports & Social Club, Mrs Hill, cerysjones1@gmail.com

(O/AG) Blackdown Agility Society Buckland Farm Somerset, Dr NJ Prescott, nicola.prescott656@btinternet.com

(O/AG) Elystari Agility Golden Cross Equestrian Centre, Nr Hailsham, Mrs KD Milham

(O/AG) Freeways Agility Break (FAB) Freeway Meadow, Ms D Weaver, dawnweaver2@gmail.com

(O/AG) IconiX Agility Shows Dallas Burston Polo Club, Mr N Ellis, neil-ellis@hotmail.com

(O/AG) P3 Training Academy Bury Farm Equestrian, Miss K Parker

(O/AG) Phase Purple Agility Training Oak Tree Animal Charity, Mrs F Nemeth, hasepurple@outlook.com

(O/OB) Nuneaton Dog Training Club Nuneaton Dog Training Club, Old Hinckley Road, Nuneaton, Ms JG Bodsworth, Gloria.bonnell@ndtc.org.uk

May 10-11

(P/HTM) Canine Freestyle GB Tomlinsons, Ratby Lane, Markfield, Miss A Briggs, free-paws@talktalk.net

May 11

(CH) Bichon Frise Club Of Great Britain Staffordshire County Showground, Mrs D Russell, d.russellrusmar@gmail.com

(CH) Birmingham & Midland Counties Bulldog Club Staffordshire County Showground, Mrs CE Parker, elsieben@sky.com

(CH) Cavalier King Charles Spaniel Club Staffordshire County Showground, Mrs K Hampton Lee, secretary@thecavalierclub.co.uk

(CH) Central & Southern German Shorthaired Pointer Society Kennel Club Building at Stoneleigh Park, Mr B Ashcroft, ben.eschenhof@gmail.com

(CH) Chinese Crested Club Of Great Britain Staffordshire County Showground, Miss K Wilson, Karenwilson88@hotmail.com

(CH) Midland & Northern Counties French Bulldog Club Staffordshire County Showground, Mr D Spencer, honsecmncfbc@gmail.com

(CH) Northern Griffon Bruxellois Club Staffordshire County Showground, Mrs MJ Cook, margaret457@btinternet.com

(CH) Schipperke Club Staffordshire County Showground, Mrs MK Reed-Peck, byquy@tiscali.co.uk

(CH) Tibetan Terrier Association Staffordshire County Showground, Mr P Thirlwell, myrleatts@btinternet.com

(CH) West Pennine Pug Dog Club Staffordshire County Showground, Mrs L Mallinson, lucy.c.hill@sky.com

(L) Newtown & District Canine Society Llanidloes Rugby Club, Mrs K Walsh, bielceepoodles@hotmail.com

(O) Birmingham & District Dobermann Club Calf Heath Village Hall, Wolverhampton, Miss Yvonne Cox, von@awningace.com

(O) Central & Southern German Shorthaired Pointer Society Kennel Club Building at Stoneleigh Park, Mr B Ashcroft, ben.eschenhof@gmail.com

(O) Japanese Shiba Inu Club Of Great Britain Staffordshire County Showground, Miss KA Jones, Karen@almolka.com

(O) Midland English Setter Society Bearley Village Hall, Mrs MJ Sharples, kanietersetters@gmail.com

(O) North Of England Lhasa Apso Club Staffordshire County Showground, Mrs C Lawson, rishlynk9s@aol.com

(O) Northern Japanese Spitz Club Staffordshire County Showground, Mrs A Bowen, info@northernjapanesespitzclub.co.uk

(O) Northern Tibetan Spaniel Club Staffordshire County Showground, Mr R Lemon, richard.lemon@hotmail.com

(O/AG) Agility Vision Alrewas Showground, Mrs A Bailey, agilityvision.alex@gmail.com

(O/AG) Barrow-in-Furness Dog Agility Club Duddon Sports & Social Club, Mrs Hill, cerysjones1@gmail.com

(O/AG) Blackdown Agility Society Buckland Farm Somerset, Dr NJ Prescott, nicola.prescott656@btinternet.com

(O/AG) Elystari Agility Golden Cross Equestrian Centre, Nr Hailsham, Mrs KD Milham

(O/AG) Freeways Agility Break (FAB) Freeway Meadow, Ms D Weaver, dawnweaver2@gmail.com

(O/AG) IconiX Agility Shows Dallas Burston Polo Club, Mr N Ellis, neil-ellis@hotmail.com

(O/AG) P3 Training Academy Bury Farm Equestrian, Miss K Parker

(O/AG) Phase Purple Agility Training Oak Tree Animal Charity, Mrs F Nemeth, hasepurple@outlook.com

May 14

(L) Grantham & District Canine Society Hose Village Hall, Mr CC Cundall, christian@cundall.org

May 15

(O/AG) Phase Purple Agility Training Oak Tree Animal Charity, Mrs F Nemeth, hasepurple@outlook.com

May 15-17

(PO) Devon County Agricultural Association Westpoint Arena, Mrs Moore, lisamoore@dcshow.org

May 15-18

(CH) Scottish Kennel Club Royal Highland Showground, Ingliston, Edinburgh, Mrs G Jones, Gillian@scottishkennelclub.org

May 16

(CH) Dalmatian Club Of Scotland Royal Highland Showground, Ingliston, Edinburgh, Mrs ME Mulholland, memulholland@aol.com

(CH) English Springer Spaniel Club Of Scotland Royal Highland Showground, Ingliston, Edinburgh, Mr W Simpson, martinsmee@btinternet.com

(CH) Old English Sheepdog Club Of Scotland Royal Highland Showground, Ingliston, Edinburgh, Mrs M Strachan, andystrachans57@gmail.com

(CH) Weimaraner Club Of Scotland Royal Highland Showground, Ingliston, Edinburgh, Miss JP MacLaine, greyspirit.weimaraners@blueyonder.co.uk

(O/AG) Agility Vision Alrewas Showground, Mrs A Bailey, agilityvision.alex@gmail.com

May 17

(CH) Bullmastiff Society Of Scotland The Royal Highland Exhibition Hall, Ingliston, Edinburgh, Mrs M Cridge, marioncridge43@gmail.com

(CH) Clyde Valley German Shepherd Dog Club Strathaven Rugby Club, Miss Dickie, bill@hvsadvisers.co.uk

(CH) Lagotto Romagnolo Association Tomlinson'S Kennels, Upper Grange Farm, Mrs AB Stephenson, asteph33@aol.com

(CH) Papillon (Butterfly Dog) Club Of Scotland Lawrie & Symington, Mrs E Davidson, elmaraine@hotmail.co.uk

(CH) Pharaoh Hound Club Bagington Village Hall, Miss Heard, Secretary@pharaohhoundclub.co.uk

(CH) Scottish Boxer Club Royal Highland Showground, Ingliston, Edinburgh, Mrs C Thomson, scottishboxerclub@btinternet.com

(CH) Scottish Collie Club Loreburn Hall, Dumfries, Miss A Carmichael, kilchrenan@yahoo.com

(CH) Scottish Pomeranian Club Lanark Agricultural Centre, Lanark, Miss C Nixon, caroline419murray@btinternet.com

(CH) Scottish Siberian Husky Club Royal Highland Showground, Ingliston, Edinburgh, Mrs GS Lawrence, alascotia@yahoo.co.uk

Events

(CH) Whippet Club Of Scotland Lanark Agricultural Centre, Lanark, Miss D McKenzie, Dmckenzie15@outlook.com

(O) Lagotto Romagnolo Association Tomlinson's Kennels, Upper Grange Farm, Mrs AB Stephenson, asteph33@aol.com

(O) Northern Portuguese Podengo Association Yelvertoft Village Hall, Mrs A Sampson, secretarynppa@gmail.com

(O) Wickford Basildon & District Canine Society Barleylands Farm, Barleylands Road, Billericay, Essex, Mr Larkin, labrastaf@hotmail.co.uk

(O/AG) Agility Vision Alrewas Showground, Mrs A Bailey, agilityvision.alex@gmail.com

(O/AG) Bedfordshire All Breeds Training Society Leighton Buzzard Rugby Club, Mrs JM Acton, jillacton88@gmail.com

(O/AG) Pawsability Catcombe Farm, Miss S Mosedale, pawsability@outlook.com

(O/AG) Roseland Dog Training Club Stithians Showground, Stithians, Cornwall, Dr A Ridout, secretary@roseland-dtc.com

(O/AG) Whitstable Agility Group South Of England Show Ground, Ardingly, Mrs Croxford, info@petlodge.co.uk

(O/OB) Loughborough Dog Training Club Coalville Rugby Football Club Memorial Ground, Mrs RA Lewis, ruthlewis555@yahoo.co.uk

(O/OB) Warlingham Dog Training Club Croydon Sports & Social Club, Mrs V Sultana, vanessa.sultana@sky.com

(P/AG) High Peak Dog Training Society Cheshire Polo Club, Mrs S Pattinson, sharon.pattinson1@googlemail.com

(P/AG) Worcester Agility Society Top Barn Farm, Holt Heath, Worcester, Mrs L Abbey, chairpersonwas@gmail.com

May 17-18

(PO) Royal Welsh Agricultural Society Royal Welsh Showground, Mrs JA Howells, juliehowells58@outlook.com

May 18

(CH) Scottish Staffordshire Bull Terrier Club Lawrie & Symington, Mr GD Owen, gareth.owen14@gmail.com

(CH/AG) Scottish Kennel Club Royal Highland Showground, Ingliston, Edinburgh, Mrs G Jones, Gillian@scottishkennelclub.org

(CH/OB) Loughborough Dog Training Club Coalville Rugby Football Club Memorial Ground, Mrs RA Lewis, ruthlewis555@yahoo.co.uk

(O) Bull Terrier Club Shenstone Village Hall, Mrs TA Westwood, secretary@thebullterrierclub.co.uk

(O) Coventry & Nuneaton District Kennel Association The Kennel Club Building, Mrs C Headley, chrisheadley70@gmail.com

(O) Devon & Cornwall Cocker Spaniel Club Uplowman Village Hall, Miss SJM Ellison, sally.ellison@hotmail.co.uk

(O) Estrela Mountain Dog Club (UK) Bearley Village Hall, Miss GC Reid, secretary@emdc_uk.com

(O) Loughborough & District Canine Society Tomlinsons Boarding Kennels, Mrs MS Ward, zabarettsward@btinternet.com

(O) Midland Golden Retriever Club Bagington Village Hall, Miss L Layland, Lesleylayland@yahoo.co.uk

(O) Poole Canine Club Sparsholt College Equine Centre Indoor Arena, Ms J Rorke, jacquierorke1@aol.com

(O/AG) Agility Vision Alrewas Showground, Mrs A Bailey, agilityvision.alex@gmail.com

(O/AG) Bedfordshire All Breeds Training Society Leighton Buzzard Rugby Club, Mrs JM Acton, jillacton88@gmail.com

(O/AG) Carn Brea Agility Club Stithians Showground, Stithians, Cornwall, Mrs MA Small, ebbie159@live.co.uk

(O/AG) High Peak Dog Training Society Cheshire Polo Club, Mrs S Pattinson, sharon.pattinson1@googlemail.com

(O/AG) Pawsability Catcombe Farm, Miss S Mosedale, pawsability@outlook.com

(O/AG) Whitstable Agility Group South Of England Show Ground, Ardingly, Mrs Croxford, info@petlodge.co.uk

(O/OB) St Edwards Dog Training Club Croydon Sports & Social Club, Mrs JA Harknett, jennyharknett@yahoo.co.uk

May 20

(L) Folkestone Hythe & District Canine Society Hawkinge Village Hall, Mrs K Woolnough, woolnough@mchenry.plus.com

(L) Wombwell & District Canine Society Elsecar Parish Hall, Church Street, Elsecar, Mrs W Curry, currybeards@aol.com

May 22

(O/AG) Ogilvie Dogs Ogilvie Dogs, Miss S Pratley

May 23

(CH) Shih Tzu Club Of South Wales & Western Counties Three Shires Field, Bannerdown, Bath, Mrs TA Hitt, tracey.hitt@btinternet.com

(CH) South Western Tibetan Spaniel Club Three Shires Field, Bannerdown, Bath, Miss HJ Simper, hjs.clydum@hotmail.co.uk

(CH) West Of England Chow Chow Club Three Shires Field, Bannerdown, Bath, Mrs A Cummins, annecummins@aol.com

(CH) Western Afghan Hound Club Three Shires Field, Bannerdown, Bath, Mrs J Cross, jill@gilariafghans.com

(O) Portuguese Podengo Club of Great Britain Three Shires Field, Bannerdown, Bath, Miss D Marino, daisymarino18@hotmail.com

(O/AG) Agility Vision Alrewas Showground, Mrs A Bailey, agilityvision.alex@gmail.com

(O/AG) Belgian Shepherd Dog Association Of Great Britain Ashfields Carriage & Polo Club, Dr MK Pratten, concord@globalnet.co.uk

(O/AG) Edge Agility Shows Lydiard Park, Swindon, Wilts, Miss Lawson

(O/AG) Wyvern Agility Cranleigh Agricultural Showground, Cranleigh, Surrey, Mrs LA Bridges

May 23-26

(CH) Bath Canine Society Three Shires Field, Bannerdown, Bath, Mr LAS Cox, bathcaninesecretary@gmail.com

May 24

(CH) English Toy Terrier (Black & Tan) Club Three Shires Field, Bannerdown, Bath, Mrs L Dixon, secretary@english-toy-terrier-club.com

(CH) Kerry Blue Terrier Club Of England Three Shires Field, Bannerdown, Bath, Mrs M Bradley, margaretbradley1@hotmail.co.uk

(CH) London & South East Rottweiler Club Dobermann Club Showground, Hertford Road, Digswell, Mrs W Kichenside, lasersecretary@gmail.com

(CH) South Of England Papillon Club Three Shires Field, Bannerdown, Bath, Rev K Wells, Kirsty@metamorphicpapillons.com

(CH) Wales & West England Pug Dog Club Three Shires Field, Bannerdown, Bath, Miss KE Murphy, kazmurph@hotmail.com

(CH) Wales & West of England Pekingese Association Three Shires Field, Bannerdown, Bath, Mr GGJ Thomas, jonsvillepekes@talktalk.net

(CH) West Of England Cavalier King Charles Spaniel Club Three Shires Field, Bannerdown, Bath, Mrs TM Jackson, tracy@amantra.co.uk

(CH/AG) Nottingham Agility Dog Training Club Newark County Showground, Miss D Lewis, nadtc@hotmail.com

(CH/OB) Exeter Dog Training Club Cullompton Rangers AFC, Cullompton, Devon, Mrs L Cousins, secretary@exeterdogtrainingclub.co.uk

(O) Coventry Cocker Spaniel Club Bagington Village Hall, Mrs BM Ward, barbarawatwensum@aol.com

(O) Lancashire Heeler Association Bearley Village Hall, Mrs T Bellinger, heelstone.heelers@gmail.com

(O) Llandudno Canine Society Ruthin Livestock Market Parc, Mr AE Swannell, andyswannell04@outlook.com

(O) North Of England Hunt Point Retriever Club High Goosepool Farm, Middleton St George, Darlington, Mr R McMaster, robcmaster@btinternet.com

(O) North Riding Gundog Club High Goosepool Farm, Middleton St George, Darlington, Mrs JE Knight, Toffee51@outlook.com

(O) Southern Irish Terrier Society Three Shires Field, Bannerdown, Bath, Mr Nevill, jneville@btinternet.com

(O) Tynedale Agricultural Society Bywell Hall, Stocksfield, K Robson, kerry@northcountyshow.co.uk

(O) Welsh Terrier Association Three Shires Field, Bannerdown, Bath, Mr DL Williams, welshterrierassociation@gmail.com

(O) Yorkshire Collie Club Grenoside Community Hall, Mrs CA Biggs, chrisbiggs63@gmail.com

(O/AG) Agility Vision Alrewas Showground, Mrs A Bailey, agilityvision.alex@gmail.com

(O/AG) Belgian Shepherd Dog Association Of Great Britain Ashfields Carriage & Polo Club, Dr MK Pratten, concord@globalnet.co.uk

(O/AG) Edge Agility Shows Lydiard Park, Swindon, Wilts, Miss Lawson

(O/AG) Longfield Agility Hillside Rural Activities Park, Mr K Waddell, longfieldagility@gmail.com

(O/AG) Somerset West Agility Training Coppice Gate Farm, Mrs TS Davis, swatdogsuk@gmail.com

(O/AG) Wyvern Agility Cranleigh Agricultural Showground, Cranleigh, Surrey, Mrs LA Bridges

Events

(O/OB) Elm Park Dog Training Club Plantation Park Blofield, Norwich, Mrs J Appleton, appleton.julie@btinternet.com

May 25

(CH) English Springer Spaniel Club Of Wales Three Shires Field, Bannerdown, Bath, Mr DM Lewis, waynelewis5@live.co.uk

(CH) South West Whippet Club Three Shires Field, Bannerdown, Bath, Mrs AC Prowse, freehamletwhippet@btinternet.com

(CH) Southern Flatcoated Retriever Club Mrs S Tagg, suzi.tagg@yahoo.co.uk

(CH) Weimaraner Club Of Great Britain Three Shires Field, Bannerdown, Bath, Mr J Kelly, sally@weimaraners.org.uk

(CH/AG) Nottingham Agility Dog Training Club Newark County Showground, Miss D Lewis, nadtc@hotmail.com

(O) London & South East Rottweiler Club Dobermann Club Showground, Hertford Road, Digswell, Mrs W Kichenside, lasersecretary@gmail.com

(O/AG) Agility Vision Alrewas Showground, Mrs A Bailey, agilityvision.alex@gmail.com

(O/AG) Belgian Shepherd Dog Association Of Great Britain Ashfields Carriage & Polo Club, Dr MK Pratten, concord@globalnet.co.uk

(O/AG) Edge Agility Shows Lydiard Park, Swindon, Wilts, Miss Lawson

(O/AG) Longfield Agility Hillside Rural Activities Park, Mr K Waddell, longfieldagility@gmail.com

(O/AG) Somerset West Agility Training Coppice Gate Farm, Mrs TS Davis, swatdogsuk@gmail.com

(O/AG) Wyvern Agility Cranleigh Agricultural Showground, Cranleigh, Surrey, Mrs LA Bridges

(O/OB) Elm Park Dog Training Club Plantation Park Blofield, Norwich, Mrs J Appleton, appleton.julie@btinternet.com

(O/OB) Exeter Dog Training Club Cullompton Rangers AFC, Cullompton, Devon, Mrs L Cousins, secretary@exeterdogtrainingclub.co.uk

May 26

(CH) Polish Lowland Sheepdog Club of Wales & The West of England Three Shires Field, Bannerdown, Bath, Ms HM Cousins, cuz22@live.co.uk

(CH) South Western Boxer Club Three Shires Field, Bannerdown, Bath, Mrs B Morison, xandeneboxers@aol.com

(CH) South Western Great Dane Club Three Shires Field, Bannerdown, Bath, Mrs Gray, cjb2712@hotmail.co.uk

(CH) Southern Old English Sheepdog Club Three Shires Field, Bannerdown, Bath, Mrs KD Reeves, kimdebbe63@gmail.com

(O) Eastern Counties Golden Retriever Club Peartree Farm, Nr Bury St Edmunds, Miss N Barber, nadinebarber@btinternet.com

(O) Great Harwood Agricultural Society The New Showground, Off harwood Lane, Great Harwood, Nr Accorington, Miss DE Loynd, crimbledale22@gmail.com

(O) Shropshire Gundog Society The Cavalier Centre, Mrs GM Brown, brownsrangatira@gmail.com

(O) South Eastern Welsh Springer Spaniel Club Cobham Village Hall, Mrs TJ Bennett, tracy.sewssc@gmail.com

(O) Welsh Corgi Club Three Shires Field, Bannerdown, Bath, Mrs C Davies, gelli2@btinternet.com

(O/AG) Agility Vision Alrewas Showground, Mrs A Bailey, agilityvision.alex@gmail.com

(O/AG) Belgian Shepherd Dog Association Of Great Britain Ashfields Carriage & Polo Club, Dr MK Pratten, concord@globalnet.co.uk

(O/AG) Edge Agility Shows Lydiard Park, Swindon, Wilts, Miss Lawson

(O/AG) Longfield Agility Hillside Rural Activities Park, Mr K Waddell, longfieldagility@gmail.com

(O/AG) Somerset West Agility Training Coppice Gate Farm, Mrs TS Davis, swatdogsuk@gmail.com

(O/AG) Wyvern Agility Cranleigh Agricultural Showground, Cranleigh, Surrey, Mrs LA Bridges

(O/OB) Elm Park Dog Training Club Plantation Park Blofield, Norwich, Mrs J Appleton, appleton.julie@btinternet.com

(R) Stoneleigh Rally Kennel Club Building at Stoneleigh Park, Mrs RJ Bradley, stoneleighrally@gmail.com

May 27

(O/AG) Longfield Agility Hillside Rural Activities Park, Mr K Waddell, longfieldagility@gmail.com

May 28

(PO) Reading & District Kennel Association Newbury Showground, Chieveley, Newbury, Miss EA Scoates, eas.clydum@hotmail.co.uk

May 28-29

(O) Staffordshire & Birmingham Agricultural Society Staffordshire County Showground, Miss A Aulton, aulton101@gmail.com

May 29

(O/AG) Kelluki Agility Cranleigh Showground, Miss S Hatcher, sjhatcher62@hotmail.com

(O/AG) Longfield Agility Hillside Rural Activities Park, Mr K Waddell, longfieldagility@gmail.com

May 30

(CH) Home Counties American Cocker Club Newbury Showground, Chieveley, Newbury, Mrs J Price, Jackiesmith37@hotmail.com

(CH) South Of England Irish Setter Club Newbury Showground, Chieveley, Newbury, Mrs PM Harris, canford.print@live.co.uk

(O) Weimaraner Association Newbury Showground, Chieveley, Newbury, Miss J George-Ainscough, achouffegundogs@btinternet.com

(O/AG) Agility Vision Alrewas Showground, Mrs A Bailey, agilityvision.alex@gmail.com

(O/AG) Kelluki Agility Cranleigh Showground, Miss S Hatcher, sjhatcher62@hotmail.com

(O/AG) Longfield Agility Hillside Rural Activities Park, Mr K Waddell, longfieldagility@gmail.com

(O/AG) Wigton Dog Training Club Hutton Hall, Penrith, Cumbria, Miss P Wilson, patwilson142@btinternet.com

May 30-June 1

(CH) Southern Counties Canine Association Newbury Showground, Chieveley, Newbury, Mrs AM Cavill, angelacavill@btconnect.com

May 31

(CH) Bloodhound Club Bagington Village Hall, Miss S Clark, secretary@thebloodhoundclub.com

(CH) Finnish Lapphund Club Of Great Britain Newbury Showground, Chieveley, Newbury, Mrs Woollard, ficgb.secretary@gmail.com

(CH) Southern Cairn Terrier Club Newbury Showground, Chieveley, Newbury, Mrs SSA Kinton, skinton@btinternet.com

(CH) Southern Counties Australian Terrier Club Newbury Showground, Chieveley, Newbury, Mrs C Foskett, wilfnbell@yahoo.co.uk

(CH) Wessex Border Collie Club Newbury Showground, Chieveley, Newbury, Mrs S Tydeman, sam.tydeman67@btinternet.com

(CH) Whippet Club Newbury Showground, Chieveley, Newbury, Mrs ML Anderson, enquiries@thewhippetclub.com

(CH/AG) Hinckley Dog Training Club Market Bosworth Rugby Club, Market Bosworth, Mrs Y Croxford, motorgirl.sa72@gmail.com

(O) Irish Setter Association, England Chieveley Village Hall, Miss T Gardner, Tania.isae@yahoo.com

(O) Rhodesian Ridgeback Club Of Great Britain Tomlinsons, Ratby Lane, Markfield, Miss JR Cyprien, secretary@rrcgb.co.uk

(O) Samoyed Breeders & Owners League The Newbury & District Agricultural Society, Mrs PA Lepley, lepleyp@btinternet.com

(O) Soft Coated Wheaten Terrier Club Of Great Britain Newbury Showground, Chieveley, Newbury, Ms HE Reaney, secretary@wheaten.org.uk

(O) West Highland White Terrier Club (England) Ltd Newbury Showground, Chieveley, Newbury, Mrs F West, fwest@tomlyndon.co.uk

(O/AG) Agility Vision Alrewas Showground, Mrs A Bailey, agilityvision.alex@gmail.com

(O/AG) Kelluki Agility Cranleigh Showground, Miss S Hatcher, sjhatcher62@hotmail.com

(O/AG) Longfield Agility Hillside Rural Activities Park, Mr K Waddell, longfieldagility@gmail.com

(O/AG) TNG Agility White Owl Farm, Miss Durrant, anne.murray27@icloud.com

(O/AG) Wigton Dog Training Club Hutton Hall, Penrith, Cumbria, Miss P Wilson, patwilson142@btinternet.com

(O/OB) Newton Heath Dog Training Club Newton Heath Dog Training Club, Wickentree Lane, Mrs Buffey, cherylbuffey@icloud.com

(O/OB) Petersfield & District Dog Training Society Penns Farm Playing Fields, Mrs S James Price, secretary@pddts.co.uk

(P/AG) Wye Valley Dog Training Club Vauxhall Fields, Monmouth, Mrs GL Alcorn, terriers@tinyworld.co.uk

(PO) Carlisle & District Canine Society Greenlands Livery Centre, Wreay, Carlisle, Cumbria, Mrs P Maclellan, maclellanpam@gmail.com

(R) Rally Dogs Cheltenham North Rugby Club, Mrs J Barrett, rally@fitdogs.ltd.uk



THE KENNEL CLUB

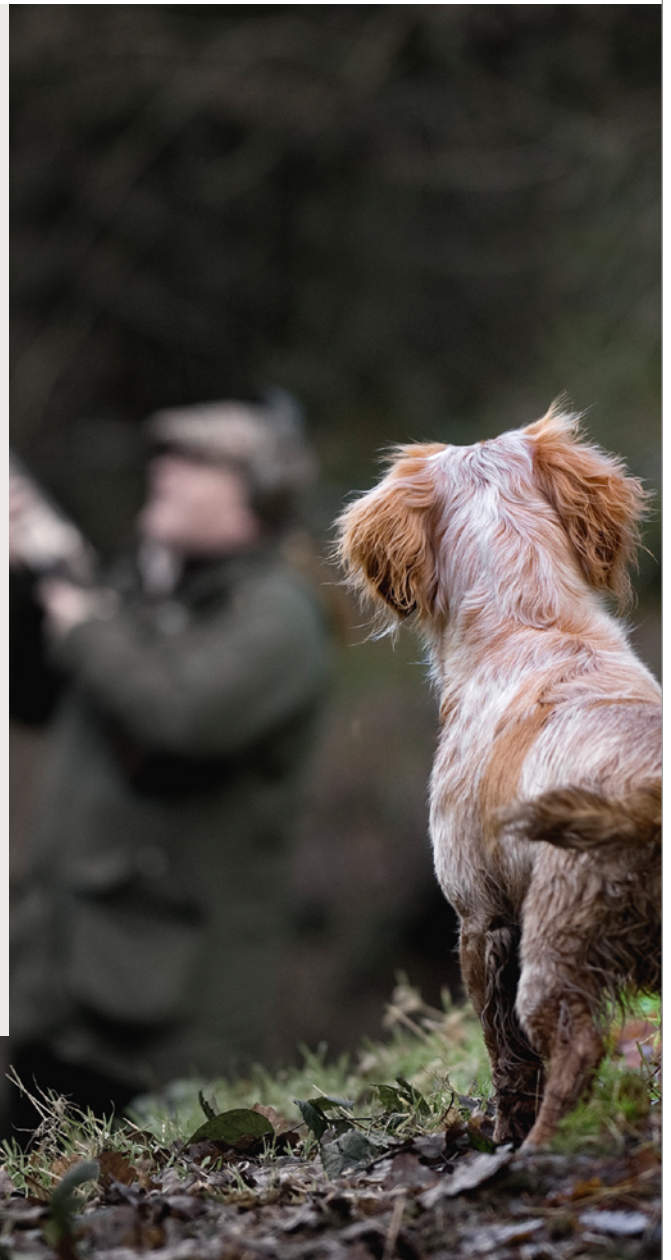
The Emblehope & Burngrange Estate Northumberland

A Centre of Excellence for Working Dogs

This beautiful moorland estate stretches to some 7,550 acres and is absolutely ideal for walked up trialling and training for Retrievers, Spaniels and HPRs. The estate offers both Pheasant and Partridge shooting and the varied terrain offers opportunities for all breeds of Gundog to demonstrate their natural working abilities. Woodland cover provides excellent hunting for Spaniels whilst the stretching moorland is ideal for challenging retrieves and for the pointing breeds to show off their hunting abilities to the full.

As a Centre of Excellence for Working Dogs, the Estate also welcomes the full range of working dog activities including:

- Field Trials including Pointer and Setter Spring Stakes
- Gundog Working Tests
- Gundog Training Days
- Live Game Training Days
- Pointing Tests
- Working Trials
- Bloodhound Trials
- Activity Training Days
- Shooting and Gundog Activities



Book your training activities with the Emblehope Estate:
thekennelclub.org.uk/emblehope | emblehope@thekennelclub.org.uk
01296 318 540 ext 290

Field Trials

The Emblehope & Burngrange Estate Northumberland

A Centre of Excellence for Working Dogs

This beautiful moorland estate stretches to some 7,550 acres and is ideal for walked up trialling and training for Retrievers, Spaniels and HPRs. The estate offers Pheasant and Partridge shooting and the varied terrain offers opportunities for all breeds of Gundog to demonstrate their natural working abilities.

Book your training activities with the Emblehope Estate:
thekennelclub.org.uk/emblehope | emblehope@thekennelclub.org.uk
 01296 318540 ext 290



THE KENNEL CLUB

MARCH

MARCH 15

Pointer Club All Aged (Pointer and AV Setter), Stanhope Moor, Mrs C Brown, crahanpointers@yahoo.co.uk

Pointer Club Novice (Pointer and AV Setter), Stanhope Moor, Mrs C Brown, crahanpointers@yahoo.co.uk

MARCH 25

Pointer Club Of Scotland Novice (Pointer and AV Setter), Cawdor Estate, Mr Tibbs, jdtibbs@btinternet.com

Pointer Club Of Scotland Puppy (Pointer and AV Setter), Cawdor Estate, Mr Tibbs, jdtibbs@btinternet.com

MARCH 26

Scottish Gundog Association Open (Pointer and AV Setter), Lochindorb Estate, Mr DJ Collins, dougcollins@live.co.uk

MARCH 27

Scottish Gundog Association Novice (Pointer and AV Setter), Lochindorb Estate, Mr DJ Collins, dougcollins@live.co.uk

Scottish Gundog Association Puppy (Pointer and AV Setter), Lochindorb Estate, Mr DJ Collins, dougcollins@live.co.uk

MARCH 28

Scottish Field Trials Association Open (Pointer and AV Setter), Dalmigarry Estate, Mr J Kean, jonkean@hotmail.co.uk

MARCH 29

Scottish Field Trials Association Novice (Pointer and AV Setter), Dalmigarry Estate, Mr J Kean, jonkean@hotmail.co.uk

Scottish Field Trials Association Puppy (Pointer and AV Setter), Dalmigarry Estate, Mr J Kean, jonkean@hotmail.co.uk

MARCH 30

Dukeries [Notts] Gundog Club Open (Pointer and AV Setter), Holwick Estate, Mrs K Brown, rubblebarny12@gmail.com

Dukeries [Notts] Gundog Club Puppy (Pointer and AV Setter), Holwick Estate, Mrs K Brown, rubblebarny12@gmail.com

APRIL

APRIL 12

The Kennel Club Ltd All Aged (Pointer and AV Setter), Six Mile Bottom, Miss K Broers, ft.secretary@thekennelclub.org.uk

The Kennel Club Ltd Open (Pointer and AV Setter), Six Mile Bottom, Miss K Broers, ft.secretary@thekennelclub.org.uk

APRIL 16

Southern Pointer Club All Aged (Pointer and AV Setter), Fulbourn, Mrs AR Maddison, annemaddison82@gmail.com

Southern Pointer Club Novice (Pointer and AV Setter), Fulbourn, Mrs AR Maddison, annemaddison82@gmail.com

APRIL 17

Southern Pointer Club Open (Pointer and AV Setter), Fulbourn, Mrs AR Maddison, annemaddison82@gmail.com

This information is correct as of 13th February 2025. If you would like to attend any of these events, please contact the Secretary for further details. Licensed by the Kennel Club.



THE KENNEL CLUB

Subscribe to the Kennel Gazette from £30 a year

thekennelclub.org.uk/shop/memberships/kennel-club-affiliates/

Seminar Diaries

Kennel Club Seminars

	DATE	TRAINER	VENUE ADDRESS	CONTACT
MARCH 2025	1st-2nd	Agility (Practical) Accredited Trainer, Martin Tait	Pool Farm, Ham Lane, Kingston, Seymour, North Somerset BS21 6XJ	Martin Tait, 07922 567056 martintaitagility@gmail.com
	9th	Requirements of a Field Trial Judge - Retriever Approved Presenter, Kevin Doughty	Arkendale Village Hall, Yorkshire	Kevin Doughty, 07723 070142
	12th	Points of a Dog Accredited Trainers, Ray Morland and Pat Dufty	Kirtling Village Hall, 39 The Street, Kirtling, Newmarket CB8 9PB	Newmarket and District Canine Society Charlotte Fitsall, 07961 795533 secretaryndcs@gmail.com
	19th	Points of a Dog Accredited Trainers, Ray Morland and Pat Dufty	Kirtling Village Hall, 39 The Street, Kirtling, Newmarket CB8 9PB	Newmarket and District Canine Society Charlotte Fitsall, 07961 795533 secretaryndcs@gmail.com
	22nd	Requirements of a Dog Show Judge Accredited Trainer, Christina Chapman	Kirtling Village Hall, 39 The Street, Kirtling, Newmarket CB8 9PB	Newmarket and District Canine Society Charlotte Fitsall, 07961 795533 secretaryndcs@gmail.com
	30th	Points of a Dog Accredited Trainer, Christina Chapman	Middlewich Community Centre, Middlewich, Cheshire CW10 9AS	Lancashire Heeler Club Liz Thwaite, 07732 709627 thelancashireheelerclub@gmail.com
	30th	Conformation and Movement Accredited Trainer, Christina Chapman	Middlewich Community Centre, Middlewich, Cheshire CW10 9AS	Lancashire Heeler Club Liz Thwaite, 07732 709627 thelancashireheelerclub@gmail.com
APRIL 2025	12th	Conformation and Movement Accredited Trainer, Christina Chapman	Bodle Street Village Hall, Bodle Street Green, Hailsham, East Sussex BN27 4UB	Eastbourne and District Canine Society Christine Rayment, 07503 211171 christinerayment84@gmail.com
	12th	Points of a Dog Accredited Trainer, Christina Chapman	Bodle Street Village Hall, Bodle Street Green, Hailsham, East Sussex BN27 4UB	Eastbourne and District Canine Society Christine Rayment, 07503 211171 christinerayment84@gmail.com
	12th	Requirements of a Field Trial Judge - Spaniels Approved Presenter, Gary Smith	The Manor Hotel, Maltby S66 8JT	Lincolnshire Gundog Society Jaison Toon, 07485 770660 bramblestone@yahoo.com
	13th	Conformation and Movement Accredited Trainer, Christina Chapman	Cattlegate, Crewshill, Enfield EN2 9ES	Crewshill Ringcraft Club Wendy Kitchenside, 07435 250784 lasersecretary@gmail.com
MAY 25	17th-18th	Agility (Practical) Accredited Trainer, Amy Gandy	Birdingbury Club/Festival Fields, Birdingbury CV23 8EH	Amy Gandy, 07977 128392 amypawsome@outlook.com
AUGUST 2025	24th	Conformation and Movement Accredited Trainer, David Cavill	Uplowman Village Hall, Uplowman, Nr Tiverton, Devon EX16 7DN	Devon & Cornwall Cocker Spaniel Club Sally Ellison, 01460 62871 Sally.ellison@hotmail.co.uk
	24th	Points of a Dog Accredited Trainer, David Cavill	Uplowman Village Hall, Uplowman, Nr Tiverton, Devon EX16 7DN	Devon & Cornwall Cocker Spaniel Club Sally Ellison, 01460 62871 Sally.ellison@hotmail.co.uk

Seminar Diaries

Breed Appreciation Days

	DATE	BREED	BREED SPEAKER	VENUE ADDRESS	CONTACT
MARCH 2025	2nd	Bedlington Terrier	Viv Rainsbury	North End West Hall, Kennel Club Building, Stoneleigh Park	Midland Bedlington Terrier Club Yvonne Bannister, 07813 450575 mbtc.secretary@gmail.com
	16th	Hovawart	Ans Schellekens Van Vught	Online Platform	Hovawart Club of Great Britain Craig Hosie, 01509 852623 secretary@hovawart.org.uk
	16th	Dobermann	TBC	Hardwicke Village Hall, Hardwicke, Stroud, Green Lane, Hardwicke	South West Dobermann Club, Welsh Dobermann, and South East Dobermann Club Nancy Evans, 07933 276383
	16th	Spaniel (Welsh Springer)	John Thirlwell	Cobham Village Hall, Lushington Drive, Cobham, Surrey KT11 2LU	South Eastern Welsh Springer Spaniel Club Tracy Bennett, 07725 557943 Tracy.sewssc@gmail.com
	16th	Norwich Terrier	Lesley Crawley	Weedon Village Hall, West St, Weedon Bec, Northampton NN7 4QU	Norwich Terrier Club Beverley Watkins, 01708 473897 beverleywatkinsntc@hotmail.co.uk
	22nd	Whippet	Leigh Morris	Middlebie Community Centre, Middlebie, Lockerbie DG11 3JW	Northern Counties Whippet Club/ Whippet Club of Scotland Marianne Lister, 07913 119404 mlister6798@gmail.com
	23rd	Spaniel (Cocker)	Joanna Darby	Kirk Deighton Village Hall, Ashdale View, Kirk Deighton, North Yorkshire LS22 4DS	Rotherham & District Cocker Spaniel Club/ Yorkshire Cocker Spaniel Club Dawn Young, 07736 465011 rotherhamcockers@yahoo.com
	23rd	Weimaraner	Gill Simpson Jean Fairlie	Johnstonebridge Community Centre, Kirkbank Road, Johnstonebridge, Lockerbie DG11 1ES	Weimaraner Club of Scotland Debbie Wallwork, 07968 623249 debbie.wallwork14@gmail.com
	23rd	Mastiff	Pamela Jeans-Brown	Bearley Village Hall, Snitterfield Road, Bearley, Stratford Upon Avon CV37 0SR	Mastiff Association & Old English Mastiff Club Deborah Harding, 07817 881589 tysonkobe@aol.com
	23rd	Staffordshire Bull Terrier	Helen Reaney, Roy Day & Paul Stanway	Longridge Village Hall, 1 Calder Avenue, Longridge, Preston PR3 3HT	North West, Merseyside, Potteries & Morecambe Bay Staffordshire Bull Terrier Clubs Anne Preston, 07718 265657 annepreston08@gmail.com
23rd	Collie (Rough)	Mrs Lynn Maxwell Mrs C Proctor	Hurlford Community Centre, Cessnock Rd, Hurlford KA1 5DD	Ayrshire Collie & Irish and Scottish Collie Club Morag McCarte roughrigg@aol.com	
29th	Tibetan Spaniel	Heather Simper	Steventon Village Hall, Steventon, Nr Abingdon OX13 6AA	South Western Tibetan Spaniel Club Heather Simper, 01235 850289 hjs.clydum@hotmail.co.uk	
APRIL 2025	6th	Afghan Hound	Susan Rhodes	Parish Hall, Greasley Sports Centre, Dovecote Road, Newthorpe, Nottingham NG16 3QN	Midland Afghan Hound Club Michelle Bloor, 01773 715054 michelle@pashtari.co.uk
	6th	Manchester Terrier	Mandy Davies, Mick Oxley, Mark Walshaw	Willington Village Hall, Twyford Road, Willington, Derby DE65 6DE	Manchester Terrier Association Mandy Davies, 07734 672805 wystry@hotmail.com

Seminar Diaries

Breed Appreciation Days

	DATE	BREED	BREED SPEAKER	VENUE ADDRESS	CONTACT
APRIL 2025	10th	Lagotto Romagnolo	Carolyn Fry	Online Platform	Lagotto Romagnolo Association Ann Stephenson, 01276 471064 asteph33@aol.com
	10th	Retriever (Flat Coated)	Becky Johnson	Online Platform	Flatcoated Retriever Club of Scotland Anne McDonald, 07709 643341 skyloch@gmail.com
	13th	Japanese Spitz	Anne Kirton	King Stanley Village Hall, King Stanley, Broadstreet, Stonehouse GL10 3PN	Japanese Spitz Club of UK Anne Kirton japspitz7@gmail.com
	20th	Chihuahua	David Reece	Mappleborough Green Village Hall, Birmingham Road Mappleborough Green, Studley B80 7BT	Midland Chihuahua Club & Longcoat Chihuahua Club Lynn Hill, 07760 130511 lynn.becanna@talk21.com
MAY 2025	3rd	Xoloitzcuintle	Chloe Wakeling & Giovanna Sweidan	Roads Village Hall, Bailey Brooks Lane, Roads, Northants NN7 2LS	Xoloitzcuintle Club of the UK Chloe Wakeling, 07368 678301 Xoloclubuk@gmail.com
	4th	Finnish Spitz	Angela Cavill	Baginton Village Hall, Frances Road, Coventry CV8 3AB	Finnish Spitz Club Angela Cavill finnishspitzsecretary@gmail.com
	15th	Retriever (Curly Coated)	Nigel Spraggins	Royal Highland Showground, Ingliston, Edinburgh EH28 8NB	Curly Coat Retriever Club Lesley Bain, 07584 075585 bec.ccrcc@gmail.com
JUNE 2025	4th	Retriever (Chesapeake Bay)	Christine Mayhew	Online Platform	Chesapeake Bay Retriever Club Tracy Boyles, 023 9263 2145 bobmayhewqhorses@aol.com
	7th	Scottish Terrier	Stuart Plane	The Jubilee Hall, Lewkwoor Village, Oxon OX49 5TL	Scottish Terrier Breeders & Exhibitors Association and West of England Scottish Terrier Club Anne Dauncey, 01952 252562 annedauncey@aol.com
JULY 2025	19th	Maltese	TBC	Baginton Village Hall, Frances Road, Coventry CV8 3AB	The Maltese Club Gwen Oliver, 07885 400067 secretary@themaltesecub.co.uk
	20th	Poodle (Miniature)	Jackie Kitchener	The Newstead Centre, Tilford Village, Newstead, Notts NG15 OBS	Trent to Tweed Poodle Club Lucy Williams, 07885 422231 trenttotweedpc@gmail.com
SEPT '25	28th	Spaniel (English Springer)	Fran Glendinning	Normanton on Soar Village Hall, 83 Main Street, Normanton on Soar, Loughborough, Leicester LE212 5HB	Lancashire & Cheshire English Spring Spaniel Club and Midland English Springer Spaniel Society Kay Woodward anniesmum21@yahoo.com

Seminar Diaries

Breed Appreciation Days

	DATE	BREED	BREED SPEAKER	VENUE ADDRESS	CONTACT
OCTOBER 2025	1st	Spaniel (Field)	Jeff Horswell	Online Platform	Field Spaniel Society Gretel Osborn, 07768 170004 secretary@fieldspanielsociety.co.uk
	5th	Coton De Tulear	Margaret Harvey and Kevin Holley	The Old Pool Bank Village Hall, Quarry Farm Road, Pool in Wharfedale, Otley LS21 3BT	The Coton de Tulear Club of the United Kingdom Kevin Holley, 07849 257859 chaircclub@gmail.com
	18th	Lancashire Heeler	Enid Lord	Middlewich Community Centre, Middlewich, Cheshire CW10 9AS	Lancashire Heeler Club Elizabeth Thwaite, 07732 709627 thelancashireheelerclub@gmail.com
	18th	King Charles Spaniel	Mea Kendall and Tracy Jackson	Baginton Village Hall, Frances Road, Coventry CV8 3AB	Northern King Charles Spaniel Club & King Charles Spaniel Association Loraine Ratter, 07951 857311 nksc.secretary@gmail.com
	19th	Pyrenean Mountain Dog	Keith Savage	Ullenhall Village Hall, Henley-in-Arden B95 5NW	Pyrenean Mountain Dog Club of Great Britain and South Eastern Pyrenean Mountain Dog Club Richard Waters, 07831 890086
	19th	Papillon	TBC	Stormont Hall, Gretna Green DG16 5HY	Papillon (Butterfly Dog) Club of Scotland and Northern & Eastern Counties Papillon Club Ted Whitehill, 07873 313811 twhitehill123@gmail.com
NOV '25	2nd	Scottish Terrier	TBC	Normanton On Soar Village Hall, Main St, Loughborough, Leicester LE12 5HB	Scottish Terrier Club (England) Mr D Mathias, 01227 731406 scottishterriereng@gmail.com



THE KENNEL CLUB
DNA TESTING SERVICES

Get to know your dog's genetics better with The Kennel Club's DNA Testing Services

Our DNA testing kits make DNA testing simple. Order yours today by visiting our shop on The Kennel Club website.



Visit our website to find out more thekennelclub.org.uk/kcdnatesting

Health Surveys

BREED AND AIM OF SURVEY	FURTHER INFORMATION
<p>ALL BREEDS To improve our understanding of the prevalence and types of back problems affecting different pedigree dog breeds.</p>	<p>Click here for the survey For further information please contact: health@thekennelclub.org.uk</p>
<p>ALL BREEDS To improve our understanding of the prevalence and type of heart disease affecting different pedigree dog breeds.</p>	<p>Click here for the survey For further information please contact: health@thekennelclub.org.uk</p>
<p>ALL BREEDS: CANINE OBESITY FACTORS AND OWNER BODY IMAGE PERCEPTION A study investigating canine obesity through an online survey, asking owners to identify ideal body shapes and sizes through perception of diagrams. For dogs over two years of age.</p>	<p>Click here for the survey</p>
<p>ALL BREEDS This survey is looking into the relationship between dog breeders and vets, specifically from viewpoints of breeders. With the goal of identifying ways of improving this relationship.</p>	<p>Click here for the survey</p>
<p>ALL BREEDS How do UK dog breeders perceive the impact of litter number on post weaning behaviour? The goal of this study is to better understand potential stress factors during puppy removal, with the aim of identifying ways to reduce stress to dam. Breeders must have experience breeding at least one bitch that has had 2 or more litters.</p>	<p>Click here for the survey</p>
<p>AMERICAN COCKER SPANIEL To look at the overall health of the American Cocker Spaniel and collect information that will help improve knowledge on prevalence of any existing conditions and identify any potential emerging issues, in order to improve the breed's health and welfare for future generations.</p>	<p>Click here for the survey For further information please contact: adeva@hotmail.co.uk</p>
<p>BAVARIAN MOUNTAIN HOUND To look at the overall health of Bavarian Mountain Hounds in the UK and collect information that will help improve our knowledge on the prevalence of any existing conditions and identify any potential emerging issues, in order to improve the breed's health and welfare for future generations.</p>	<p>Click here for the survey For further information please contact: health@thekennelclub.org.uk</p>
<p>BORDER COLLIE: THE BIG BRAINY BORDER COLLIE STUDY Part 1: studying the breed's brain development and how seizures and behavioural abnormalities arise in the breed. ALL breed owners wanted to complete survey, click here. Part 2: Recruiting one to eight-year-old epileptic and non-epileptic Border Collies.</p>	<p>Click here for the survey</p>
<p>BOXER To collect information that will help improve our knowledge on what the breeding community would like to see if we were to develop a Kennel Club/Veterinary Cardiology Society (VCS) heart scheme, and ensure the scheme is suitable for all breeders. This health survey is open to all breeders (or prospective breeders) of Boxers.</p>	<p>Click here for the survey For further information please contact: health@thekennelclub.org.uk</p>
<p>CIRNECO DELL'ETNA To look at the overall health of the Cirneco dell'Etna and collect information to improve our knowledge on the prevalence of any existing conditions and identify any potential emerging conditions, in order to improve the breed's health and welfare for future generations.</p>	<p>Click here for the survey For further information please contact: hillyercaroline@gmail.com</p>

Health Surveys

BREED AND AIM OF SURVEY	FURTHER INFORMATION
<p>DACHSHUND (ALL VARIETIES) To continually monitor the overall health of the Dachshund varieties and collect information that will help improve knowledge on prevalence of any existing conditions and identify any potential emerging issues, in order to improve the breed's health and welfare for future generations.</p>	<p>Click here for the survey For further information please contact: info@dachshundhealth.org.uk</p>
<p>DACHSHUND (ALL VARIETIES) This survey is investigating the relationship between on lead behaviour and IVDD (back issues) in the breed. This survey is aimed at current owners, or owners who have had a Dachshund in the last 2 year. Dogs do not need to have IVDD or pull/walk on a lead as all answers are valued.</p>	<p>Click here for the survey</p>
<p>ENTLEBUCHER MOUNTAIN DOG To look at the overall health, wellbeing and behaviour of UK Entlebucher Mountain Dogs.</p>	<p>Click here for the survey For further information please contact: chairman@entlebucher.co.uk</p>
<p>FIELD SPANIEL To look at the overall health of the Field Spaniel and collect information to improve our knowledge on the prevalence of any existing conditions and identify any potential emerging conditions, in order to improve the breed's health and welfare for future generations.</p>	<p>Click here for the survey For further information please contact: health@thekennelclub.org.uk</p>
<p>FINNISH LAPPHUND To look at the overall health of the Finnish Lapphund and collect information to improve our knowledge on the prevalence of any existing conditions and identify any potential emerging conditions, in order to improve the breed's health and welfare for future generations.</p>	<p>Click here for the survey For further information please contact: health@thekennelclub.org.uk</p>
<p>FLAT COATED RETRIEVER To record data about the causes of death in the Flat Coated Retriever.</p>	<p>Click here for the survey For further information please contact a member of the Society Health Sub Committee, contact details available here</p>
<p>HAVANESE To continually monitor the overall health of the Havanese and collect information that will help improve knowledge on prevalence of any existing conditions and identify any potential emerging issues, in order to improve the breed's health and welfare for future generations.</p>	<p>Click here for the survey For further information please contact: akkad@doctors.org.uk</p>
<p>HAVANESE This survey aims to help us understand factors affecting longevity and causes of death in the breed.</p>	<p>Click here for the survey For further information please contact: akkad@doctors.org.uk</p>
<p>HUNGARIAN WIRE HAired VIZSLA To continually monitor the overall health of the Hungarian Wire Haired Vizsla and collect information that will help improve our knowledge on the prevalence of any existing conditions and identify any potential emerging issues, in order to improve the breed's health and welfare for future generations.</p>	<p>Click here for the health reporting form Click here for the death reporting form For further information please contact: health@hwva.org.uk</p>
<p>IRISH WOLFHOUND This study is investigating the factors influencing bloating and the development and outcome of GDV in Irish Wolfhounds in the UK.</p>	<p>Click here for the survey For further information please contact: researchcoordinator@iwhealthgroup.co.uk</p>
<p>ITALIAN GREYHOUND To look at the overall health of the Italian Greyhound and collect information that will help improve our knowledge on the prevalence of any existing conditions and identify any potential emerging issues, in order to improve the breed's health and welfare for future generations.</p>	<p>Click here for the survey For further information please contact: researchcoordinator@iwhealthgroup.co.uk</p>

Health Surveys

BREED AND AIM OF SURVEY	FURTHER INFORMATION
<p>ITALIAN SPINONE To look at the overall health of the Italian Spinone and collect information that will help improve our knowledge on the prevalence of any existing conditions and identify any potential emerging issues, in order to improve the breed's health and welfare for future generations.</p>	Click here for the survey
<p>LAGOTTO ROMAGNOLO To look at the overall health of the Lagotto Romagnolo and collect information that will help improve our knowledge on the prevalence of any existing conditions and identify any potential emerging issues, in order to improve the breed's health and welfare for future generations.</p>	Click here for the survey
<p>PARSON RUSSELL TERRIER To continually monitor the overall health of the Parson Russell Terrier and collect information that will help improve our knowledge on the prevalence of any existing conditions and identify any potential emerging conditions, in order to improve the breed's health and welfare for future generations.</p>	Click here for the survey For further information please contact: ratscallionterrier@hotmail.co.uk
<p>PARSON RUSSELL TERRIER To establish the level of DNA testing for a range of genetic disorders in UK registered Parson Russell Terriers.</p>	Click here for the survey For further information please contact: ratscallionterrier@hotmail.co.uk
<p>PUG To investigate the outcome of Pugs suffering with mast cell tumours in the UK. The study will assess the effects of gender, neuter status, and body condition score on the potential outcome of each dog.</p>	Click here for the survey For further information please contact: sv-dogs@nottingham.ac.uk
<p>PYRENEAN SHEEPDOG To look at the overall health of the Pyrenean Sheepdog and collect information that will help improve our knowledge on the prevalence of any existing conditions and identify any potential emerging issues, in order to improve the breed's health and welfare for future generations.</p>	Click here for the survey For further information please contact: psdhealthsurvey@btinternet.com
<p>SKYE TERRIER Researchers at the University of Cambridge are investigating liver disease in Skye Terriers (commonly known as 'Skye Terrier hepatitis') to try to understand the underlying cause and genetics of the condition.</p>	Click here for the survey
<p>STANDARD POODLE Standard Poodles can sadly be affected by bloat (otherwise known as gastric dilation, GD); which can sometimes lead to the emergency condition of "twisted stomach" (GDV). The University of Nottingham together with the Standard Poodle breed club have developed a new survey, which aims to identify approaches that can reduce the likelihood of one or both conditions happening.</p>	Click here for the survey For further information please contact: health@thekennelclub.org.uk
<p>ST BERNARD To look at the overall health of the St Bernard and collect information that will help improve knowledge on prevalence of any existing conditions and identify any potential emerging issues, in order to improve the breed's health and welfare for future generations.</p>	Click here for the survey For further information please contact: t.booth73@ntlworld.com
<p>WEST HIGHLAND WHITE TERRIER Breed Health Survey studying pulmonary fibrosis in the breed. Survey open to dogs of any age, healthy and affected dogs, and dogs that have previously died as a result of fibrosis.</p>	Click here for the survey
<p>The Kennel Club would like to invite you to advertise your up-coming health-related clinic, seminar or survey on the health pages of The Kennel Club website and in The Kennel Club Journal. Please allow plenty of notice before the actual event.</p> <p>To submit your health-related clinic, seminar or survey for advertisement, please complete the relevant form on our website:</p> <p style="text-align: center;">Health-related clinic Health-related seminar Health-related survey</p>	

Multi-Breed Health Screening Clinics

Eye Scheme examinations

(Canine Health Scheme BVA/KC/ISDS)

DATE	LOCATION	PANELLIST	CONTACT
3rd	Peterborough	Ioannis Tzouganakis	Contact Vet Eye Care at info@veteyecare.co.uk or via 01733 304364
7th	Potters Bar	Christine Kafarnik	Contact Queen Mothers Hospital for Animals on 01707 666366 or email QMHBVAenquiry@rvc.ac.uk
10th	Peterborough	Ioannis Tzouganakis	Contact Vet Eye Care at info@veteyecare.co.uk or via 01733 304364
10th	Bletchingly, Surrey	Emily Jeanes	Contact North Downs Specialist Referrals at enquiries@ndsr.co.uk or call 01883 741440
12th	Storington, West Sussex	Helen Appelboom	Contact Kerrie Oakley/Carrie Crundon at referrals@southdownsveterinaryreferrals.co.uk
17th	Peterborough	Ioannis Tzouganakis	Contact Vet Eye Care at info@veteyecare.co.uk or via 01733 304364
18th	Havant, Hampshire	John Mould	Contact Optivet Referrals via 01243 888091
22nd	Gateshead	Claudia Hartley	Contact Linda Hall at linda.sbt@sky.com
24th	Peterborough	Ioannis Tzouganakis	Contact Vet Eye Care at info@veteyecare.co.uk or via 01733 304364
24th	Bletchingly, Surrey	Emily Jeanes	Contact North Downs Specialist Referrals at enquiries@ndsr.co.uk or call 01883 741440
31st	Peterborough	Ioannis Tzouganakis	Contact Vet Eye Care at info@veteyecare.co.uk or via 01733 304364
19th	South Western Gundog Show, Matford	Claudia Hartley	Contact Caz Turner at devonhound@googlemail.com or call 077908 65594 / 01837 840566 *Please note there are no Card facilities at the event*
26th	Bridgwater, Somerset	Paul McPherson	Contact Calavey Pet Services petservices@calavey.com or call 07725 078589. For more information, visit www.calaveypetservices.com/events
26th	Upton Rugby Club, Upton	James Rushton	Book online at Kirkbourne Spaniels or email info@kirkbournespaniels.co.uk

MARCH 2025

APRIL 2025

KC File for March

INTERIM BREED STANDARD

The Kennel Club Interim Breed Standard for the Polish Hunting Dog (Imp) will be published on 1 April 2025. The breed will therefore be eligible for exhibition in Imported Breed Register classes from this date. The standard will be available on the Kennel Club website. The breed has been classified in the Hound Group on the Imported Breed Register since April 2024.

DISQUALIFICATIONS

At its meeting of the 3 December 2024 the Show Executive Committee made the following disqualifications:

- Ms S Pass & Mrs M Smithson & Mr P Thorsteinson - **SALUKI SUNNUSTEINS SAFANIYAH JAMIIL CHISOBEE (IMP ISL)** Not entered in same ownership as registered at the Kennel Club - F(1)8.g
- Bath Canine Society - Championship Show - 31 July 2021 - 1st Limit Dog
 - Ladies Kennel Association - Championship Show - 10 December 2022 - 1st Limit Dog
 - Three Counties Agricultural Society - Championship Show - 8 June 2023 - 1st Limit Dog
 - Welsh Kennel Club - Championship Show - 17-20 August 2023 - 1st Veteran Dog, Best Veteran & Dog Challenge Certificate
 - Three Counties Agricultural Society - Championship Show - 6-9 June 2024 - 1st Veteran Dog

PENALTIES AND FINES

At its meeting held on 21 March 2024 the Activities Committee imposed the following penalties:

Breach of Regulation H11 - Control of Dogs

- Ms H Jordan - Border Collie **FREYASWAY LAGERTHA'S GARMR** - Country Shows Agility on 30 December 2023. Reprimand, the dog's record endorsed to confirm that it is no longer eligible for entry at any event held under Kennel Club Rules and Regulations, nor any unlicensed events recognised by the Kennel Club, Regulation B.12.b(5) refers and £50 fine.

Breach of Regulation H2 - Code of Conduct

- Ms Abrahams - Inspire Agility Listed Status Open Agility Show on 11 February 2024. Fined £100 and warned as to her future behaviour at shows.

At its meeting held on 19 June 2024 the Activities Committee imposed the following penalties:

Breach of Regulation H(1)(B)5.a.(22).c - Granting a Re-run

- Ms R Radbourne - Norfolk Dog Training Society Premier Agility Show on 31 March 2024. Written to and reminded of the correct procedure.
- Norfolk Dog Training Society - Norfolk Dog Training Society Premier Agility Show on 31 March 2024. Written to and reminded that any deviation from standard marking for special classes needed to be included in the schedule and judges made aware.

Breach of Regulation H11 - Control of Dogs

- Miss JL Coleman and Mr DB Callow - **RED VELVET** - Phase Purple Listed Status Open Agility Show on 26 February 2024. Reprimanded, dog's record marked. Fined £50 and warned.
- Mr A Priestley - **MAGIC MALLIGATOR** - Fair City Dog Training Club Premier Agility Show on 12 May 2024. Dog no longer eligible for entry at any event held under Kennel Club Rules and Regulations, nor any unlicensed events recognised by the Kennel Club, Regulation B12.b(5) refers.
- Mrs V Fendick - **GREYMOO DON'T STOP BELIEVING** - Phase Purple Listed Status Open Agility Show on 12 May 2024. Reprimanded, dog's record marked and fined £50.

At its meeting held on 19 September 2024 the Activities Committee imposed the following penalties:

Breach of Regulation H11 - Control of Dogs

- Mrs L Wrigley - **MOONDUST BOLT OF THE SHIRES** - Agility Vision Open Agility Show on 24 May 2024. Warned, dog's record marked. Requested to pay for damages.
- Miss R Thomas - **AVANWOLF KEY TO SUCCESS** - Worcester Agility Show Premier Agility Show on 18 May 2024. Dog no longer eligible for entry at any event held under Kennel Club Rules and Regulations, nor any unlicensed events recognised by the Kennel Club, Regulation B12.b(5) refers.

Breach of Regulation G23 - Control of Dogs

- Mrs J Harvey - **PAULDENS THIS GIRL IS A STAR** - Carmarthen Canine Society Open Obedience Show on 30 March 2024. Warned.

- Ms H Conlon - **REINGLEN JAVELIN** - Carmarthen Canine Society Open Obedience Show on 30 March 2024. Reminded to keep dogs under control.
- Mrs J Harvey - **REINGLEN JAVELIN** - Newbury & District Dog Training Society Open Obedience Show on 9 June 2024. Dog ineligible for entry at any event held under Kennel Club Rules and Regulations nor any unlicensed event recognised by The Kennel Club, Regulation B12.b(5) refers.

At its meeting held on 5 December 2024 the Activities Committee imposed the following penalties:

Breach of Regulation H(1)11.a - Dog Out of Control

- Mr Young - 'Tarka' - TNG Agility Open Agility Show on 19 May 2024. Reminded to keep dogs under control. Dog's record marked.

Breach of Regulation H2 - Aggressive Behaviour Towards Judge

- Miss B Middleton - Dartford Dog Training Club Premier Agility Show on 1 June 2024. Warned.

Breach of Regulation H2 - Intimidation from Judge -

- Mr D Redford - Phase Purple Open Agility Show on 29 July 2024. Warned.

- Miss A Rae - Phase Purple Open Agility Show on 29 July 2024. Written to and advised to request permission from the Judge in future.

Breach of Regulation H11 and H4 - Control of Dogs

- Mr A Priestley and Mrs C Priestley - **THE CUDDLY CROCODILE** - Southam Dog Training Club Open Agility Show on 14 September 2024. Dog ineligible for entry at any event held under Kennel Club Rules and Regulations, nor any unlicensed event recognised by the Kennel Club, Regulation B12.b(5) refers.

Breach of Regulation H11 - Control of Dogs

- Mr D Marsh - **ASTAROTH GOD OF WAR** - Iconix Agility Show Open Agility Show on 26 August 2024. Dog ineligible for entry at any event held under Kennel Club Rules and Regulations, nor any unlicensed event recognised by the Kennel Club, Regulation B12.b(5) refers.

For the Members

APPLICATIONS FOR ASSOCIATESHIP

Any information that may prove useful should be addressed to the Secretary of the Kennel Club at kcmembership@thekennelclub.org.uk:

- Mrs Ceri McEwan, 22 Whittlewood Close, St. Leonards-on-Sea, East Sussex TN38 9SR

NEW ASSOCIATES

The following applicants have been elected Associates of The Kennel Club:

- Miss Susan Armstrong
- Mrs Julie Barrett
- Mrs Mary Chambers
- Miss Bernice Emanuel
- Mrs Lesley Fugle
- Mrs Ewa Highland
- Mrs Marina McLaughlin

- Mrs Lynne Murray Hogsflesh
- Dr Latha Parvataneni
- Mrs Louise Roffey
- Miss Tina Taylor
- Miss Angela Turnbull
- Mrs Denyse Whitehead

OBITUARY

It is with sadness that The Kennel Club wishes to record the death of the following member:
Mr B Leonard



MAKING A DIFFERENCE FOR DOGS

**We fund projects
that give dogs healthier,
happier lives**

From investing in ground-breaking canine science and research, to funding medical and support dog training programmes and life-saving dog welfare projects, we bring cutting-edge technology, compassion and kindness to the space where dogs and people meet. Please visit our website to read more about our work and how you can help. Together, we can make a difference for dogs.



DONATE ONLINE
www.kennelclubcharitabletrust.org


THE KENNEL CLUB
 CHARITABLE TRUST

Kennel Names

The following Kennel Names have recently been granted by The Kennel Club. Objections to any of the approved Kennel Names listed below must be lodged in writing within four weeks of the publication of this Journal. If an objection is successfully upheld The Kennel Club reserves the right to revoke the Kennel Name and any subsequent registrations. Objections should be addressed to:

The Customer Services Team
Kennel Club House
Gatehouse Way
Aylesbury
HP19 8DB.

KENNEL NAME APPROVALS

ABBEYMEADOW
ACOEUROUVERT
AHELOVA
AIRESTAFF
ALBAADAX
ALSIDEWOOD
AMEROCK
APPELSCAGH
ASTROLOGICAL
AVOURENDE
BALLYWILLINE
BANLAOCH
BANNOCKSMOSS
BARKINBOUT
BELLAPALY
BELLELEVAGE
BERRYKENNELS
BIDEGATE
BLACKPRISM
BOREHAMHALL
BRADSKYE
BREASKIN
BRIDGESIDE
BROCKJUK
BROSIECHIX
BRUAICHGHLEN
BYLOWENEK
CABBRIELI
CADLYN
CAIMCOTTAGE
CASTLEPLACE
CHACOMBE
CHAPANAKIN

CHARLYBARLY
CLANWOLF
CLARKSONHILL
COMMROOKS
CORETANIMA
CRAIGELVAN
CUMBERALLA
DAISYDECO
DAKARALOU
DANUMHUNDE
DARUVAN
DARWELLBANK
DELARHIA
DIBAKE
DORNTANZA
DREAMFYRE
DUNSTARN
EMSWALTHAM
EVERHYLLS
EXALTIAN
FENOSMOOR
FERDHU
FERNICAPS
FIREGLOVE
FOXCLEEVE
GAYLEDALE
GELLESANOR
GEOMONDO
GILCHARMA
GILMOREND
GLAMBRYNACH
GOTTHUNDE
GRAIGWENHILL
GREATMEOLSE
GREENTIERS
GROVEDOR
GUJARATCHI
GUNNERSCREST
HARRLIZZ
HAWKCAN
HECKLEY
HENLEYBERN
HOCHHELEIA
HUGELLIOT
IBIZABULLZ
IMPERIUS
ITHILOWENN
JACOBEAUS
JAKCREST
JARUGON

JINTJIMS
JORGIANACHI
KAHUAMARL
KARMANITESKY
KEEKEDALS
KENZIEROSE
KERRGRIEVE
KILHOPEMOSS
KINDIEWOLF
KNOCKTURN
KRISTLEHEART
KYCINDE
LAREYA
LEIGHAVEN
LEMONDORE
LIATROIM
LILIIFLORA
LITTLEDOXIE
LLWYNCADWGAN
MAGNUMHOLME
MARVELRED
MAYMILEXI
MICKELHOPE
MISAMORES
MISSESESS
MOELGASYTH
MONNERCHIS
MOONMIRACLE
MOORSIDFOX
MURCOT
MYALUJO
MYLOGLENN
MYTRUE
OHANAAZOR
ONGUINARAH
ONYXPOPPY
OTERFORD
OVERMIER
PARTYPEARL
PASHIQUO
PASTELPAWS
PEARLPAWS
PEGANI
PENNYBLOSSOM
PIPERDOWN
PIPERPUPS
PIPSACRE
PITNEZE
POINTBRAQUE
POODILICIOUS

PRICEBOURNE
RAFIKIMILELE
RAINDOBE
RAMBOWEN
RATHKELTAIR
REEDBEDTWEED
RIOMHACH
ROGUEHART
ROSIELOU
ROUGEBELIER
SALIXBELLUS
SANPOLLO
SAPLINGWOOD
SEOVENACA
SEVYNELLI
SHADOWSTONE
SHAMIRALAND
SHIELDROW
SHTROIZEL
SOLSTOTHUR
SONGSHIQUAN
SQUEAKDALE
STELLARBLESK
STORMHEART
SWIFTWATCH
TABIRENCE
TEGBRIGIAD
TERRABELLA
TIROTEO
TOMNAGAIRN
TROPNEVED
TRUELINDEN
TSUSELENA
TYNEBULLYS
TYNERCAWR
UINNSEANN
VABISBRAE
VALTINCHOWS
VOMRNK
VONCRUX
VONLUCIANHAN
WESTONSTARZ
WESTSHAW
WILLOWAITE
WILLOWPADS
WOLFEMPIRE
WONDEREYE
WYTHNICK
ZENCALEET

Kennel Names

JOINT INTERESTS

BLACKSYKES: Mrs D & Mr J Wood

BLAMORDER: Miss A Lusty & Mr MJ & Mrs R Wensley

CALEYDENE: Mrs J Isherwood & Mrs A Dykes

EVELEY: Mr L Thurtle & Ms S Moulton

FOSSUNDALE: Mr D & Mrs A Kay

KEYNELL: Mr A Rathband & Miss J Fealy

LAVANDE: Mrs L Lavender & Mr R Shaw

OSHALEES: Mrs S & Mr D Scrivener

PHILANDROS: Ms P Forrest & Mrs R & Miss B Lucas

SANDYFAULDS: Messrs G & A Grassie

SKIRCOAT: Miss M Webber & Mrs B Patchett

VENATUR: Ms P Brudenell-Pryke & Ms O Gallagher

SEPARATE INTEREST

AFINMORE: Mr R Williamson

BLAKEVILLE: Mrs M Blake

BORACICA: Mr B Page

CHIBAYA: Miss E Moores

COURTBIRCH: Mr D Wallace

FOLKLAW: Miss H Folksman

HAWKNICK: Mr M Hawkins

JOCAGIL: Miss L Gill

KELLIGREWS: Mrs L Bartlett

KUHKNEVERN: Mr M Cuthbert-Brown

LIBRIS: Mrs C Northey

KENNEL NAME TRANSFERS

CLASSAGH: Miss BA & Mrs MP Kelly To Miss BA Kelly

CICELTIC: Miss L Hodge & Mr A Jones To Mr A Jones

JUHUA: Misses RL & PA Steel To Miss RL Steel

NORWELSTON: Mr & Mrs P & H Bakewell To Mr P Bakewell

BARKANELLIE: Mr I & Mrs J Taylor To Mrs J Taylor

HEELSTONE: Mr J & Mrs T Bellinger To Mrs T Bellinger

EIGER: Mrs B Dadd To Miss L Dodd

LAVONDYSS: Mrs C Rieman To Mrs CH & Mr PI Rieman

ALTUSSI: Mrs LJ Myall To Miss K King

MAGHREE: Mrs MBJ RHODES To Mr C & Miss B Rhodes

KAYTOO: Mrs M Butler To Mr KD Butler

BARABULL: Ms J Starbuck-Ashton & Mrs M Willis To Ms J Starbuck-Ashton



THE KENNEL CLUB

Subscribe to the Kennel Gazette from £30 a year

- 12 issues of The Kennel Gazette
- 10% off Crufts tickets
- 10% off selected Kennel Club publications
- A copy of The Kennel Club Annual Report
- An affiliate loyalty card and pin badge

To find out more about becoming an affiliate member or to purchase, visit:
thekennelclub.org.uk/shop/memberships/kennel-club-affiliates/

Fees

<https://www.thekennelclub.org.uk/shop/registrations/>

REGISTRATION FEES

*FORM 1 LITTER REGISTRATION SERVICES

Puppy registration up to the age of 12 months	£23 each
Kennel Club Assured Breeder	£25 each
Non Kennel Club Assured Breeder	
Litter summary certificate - replacement copy	£5
Late litter summary	£10
Late litter registration- addition to a litter already registered	£80
Find a Puppy service	£20
Find a Puppy Service with additional advert	£25
Litter naming service	£22
Litter registration requiring registration of an overseas stud dog:	
Recording of 3 generations from a certified pedigree	£20
Recording of 5 generations from a certified pedigree	£25

OVERSEAS SERVICES

*Form 4 Registration of an imported dog (including a 3 generation pedigree)	£33
Registration of an imported dog (including a 5 generation pedigree)	£43
*Form 13 Application for an export pedigree	£53
*Form 17 Application for the re-importation of a dog	£15
*Form 14 Authority to Compete for overseas competitors	£33

KENNEL NAME SERVICES

*Form 10 Registration of a Kennel Name plus 12 months' maintenance	£70
Kennel Name annual maintenance fee (annual)	£20
Kennel Name annual maintenance fee (Direct Debit)	£18
*Form 11 Vary the ownership of a Kennel Name	£45
Preservation of a historically significant Kennel Name by a breed club (50 years)	£50
*Form 8 Change of name of a registered dog – addition of a Kennel Name	£15
*Form 16 Change of name of a registered dog – removal of a Kennel Name	£30

PEDIGREE SERVICES

Three generation pedigree	£16
Five generation pedigree	£16
Enhanced five generation pedigree	£26

ADDITIONAL SERVICES

*Form 5 Registration of one dog on the Activity Register	£20
Transfer of registered ownership	£22
*Form 7 Change of name of a registered dog (within three months of initial registration)	£30
*Form 9 Registration of a Border Collie (ISDS)	£21

*Available to download from our website at www.thekennelclub.org.uk

CLUB AND SHOW FEES

REGISTERED AND AFFILIATED SOCIETIES

REGISTRATION OF TITLE (payable on application, 50% non-returnable)	
a. Societies	£100
b. Ringcraft Clubs and Branches	£25
MAINTENANCE OF TITLE	
a. Societies (if paid by Direct Debit)	£50 (£45)
b. Ringcraft Clubs and Branches (if paid by Direct Debit)	£20 (£18)

SHOWS AND TRIALS

SHOW LICENCES	
a. General Championship Show offering more than 40 sets of Challenge Certificates, (Any additional licence approved by the General Committee, at no extra cost)	£1000
b. General Championship Show offering 40 sets of Challenge Certificates or fewer	£250
c. Group Championship Show	£250
d. Breed or Obedience or Agility Championship Show (each)	£60
e. Premier Agility, Premier Obedience or Premier Heelwork to Music Show	£45
f. General or Group Open Show	£45
g. Open Shows Competitions (each) organised by Registered Clubs or Societies	£35
h. Open Shows Competitions organised by Authorised Clubs or Societies	£60
i. Limited Shows* and competitions organised by Registered Clubs or Societies	£10
j. Limited Shows and competitions organised by Authorised Clubs or Societies	£25
k. Companion Dog Shows*	£10
l. Special Events*	£10
m. Additional fee for each dog entered (excluding dogs entered not for competition and dogs entered for classes where Challenge Certificates were not on offer)	£ 0.20
n. General canine Society Open Shows: an additional fee of £2 per class for all classes over 600.	
o. Additional fee of 5p per entry over 1,000 entries per day, up to a maximum of £100 per day for Limited and Open Agility shows organised by Authorised Clubs	
p. For Licences issued to Authorised Clubs or Societies for Open Agility Shows there would be no change to fees for up to and including the first 10 licences per year, thereafter from 11-15 licences the fee would be £150 per day and for 16 or more licences a year it would be £250 per day.	
q. For Licences issued to Authorised Clubs or Societies for Limited Agility Shows there would be no change to fees up to and including the first 10 licences per year, thereafter from 11-15 licences the fee would be £100 per day and for 16 or more licences a year it would be £150 per day.	

TRIALS LICENCES

Two/three day Field or Championship Working Trial	£35
One day Field or an Open or Members Working Trial	£25

CHANGE OF LICENCE

Voluntary change of date or issue of revised licence	£6
*To cover Licences for General, Breed and Obedience Shows, Agility Shows and Flyball Competitions, fee payable for each applicable activity.	

KENNEL CLUB COMPUTER SERVICES

In addition to the above fees, computerised documents, reports and pedigrees maybe available at rates of charges approved by the Board of Directors.

RALLY & LISTED STATUS AGILITY

The fees for Rally & Listed Status Agility are both £60. Listed Agility also has an additional fee of 5p per dog over 1000 dogs (maximum £100).

EVERY BREEDER'S NATURAL CHOICE



Our exclusive Breeder Club benefits:



GET UP TO
30% OFF



FREE FOOD FOR
YOUR LITTERS



FREE PUPPY &
KITTEN PACKS



PRICE MATCH
PROMISE



RECOMMENDATION
BONUS



FREE NEXT
DAY DELIVERY

NATURALLY **JAMES** HEALTHY
WELLBELOVED™
BREEDER CLUB



Join the JAMES WELLBELOVED™ Breeder Club today and watch your litters thrive, with free food for your litters, free puppy packs for new owners, and up to 30% off on your orders. Plus, our Breeder Team are always here to offer support and advice when challenges arise. After all, raising healthy pups is no walk in the park!

Join now at www.wellbeloved.com/pages/breeders-hub or call our Breeder Team on 0333 070 5971

Terms & Conditions apply. Full T&Cs available on JAMES WELLBELOVED™ website.

Join the club!